

KS5 Full Time Technical Qualifications in Health, Care & Childcare

New Qualifications for the new world

Presenter: Paul Robottom, Technical Advisor in Health, Care and Childcare at City & Guilds

Changing reforms in 14-19 Education (England)



[YouTube: An overview of the changing world and the City & Guilds response](#)



[YouTube: More choice and more opportunities with Technical Qualifications](#)

For further information please contact:

Anita Crosland

14-19 Senior Education Manager

City & Guilds

T: 0207 294 2632 | M: 07833348885 |

anita.crosland@cityandguilds.com

City & Guilds, 1 Giltspur St, London EC1A 9DD





**L2 KS5 Certificate
in Healthcare,
Care & Childcare (3625-20)**

KS5 Level 2 Design Principles (Effective from September 2016)

Key Stage 5 (16 - 18) (L2) Technical Certificates

360 GLH or 450 GLH

Made up of 30, 60, 90 GLH Units

Progression: Enable entry to an apprenticeship, employment or progression to a Level 3 Technical Level Qualification.

Grading: P/M/D/D*

UCAS Points: n/a

Mandatory content and the contribution to overall grade must make up **at least 40%** of the qualification.
Where qualifications have one or more pathway, the mandatory content (%) should apply equally to these.

Assessment: A proportion of the qualification content will be assessed externally
(**minimum 25% for TCs and 30% Tech Level**). Must also include synoptic assessment.

Employer involvement: In design, recognition, delivery and or assessment, which raises the credibility of the qualification in the eyes of employers, parents and learners.



Level 2 Certificate in Healthcare, Care & Childcare

(360 GLH) (3625-20) (QAN: 603/0296/3)
For delivery from September 2017



[Link to qualification handbook and exemplar assessments](#)

Employer Support :

- Warrington Borough Council
- Pre-School Learning Alliance
- Ashford and St Peter's Hospitals
- Springboard Nursery
- Barnsley Borough Council
- British Institute of Learning Disabilities (BILD)
- Cornwall Care



City & Guilds NEW KS5 L2 Technical Certificate in Healthcare, Care & Childcare (3625-20) (QAN: 603/0296/3)

- Is a full L2 qualification – (360 GLH - 9 Units – one year delivery + 120-150 hrs work placement requirement)
- Recognised by employers, designed/endorsed by employers and creates a clear path to work
- Equips learners with specialist knowledge and skills enabling entry onto an apprenticeship or into a job in Health, Adult Care or Childcare
- Main purpose is into employment or progression into a L3 KS 5 qualification in Health and Care OR Early Years Educator



L2 Technical in Healthcare, Care & Childcare

9 Mandatory Units:

1. Working in healthcare and care (90 GLH)
2. Working with babies, children, young people and families in care and education (60 GLH)
3. Values, beliefs and behaviours for working in healthcare, care and childcare settings (30 GLH)
4. Communicating for effective practice in healthcare, care and childcare (30 GLH)
5. Working safely in healthcare, care and childcare environments (30 GLH)
6. Safeguarding and protecting vulnerable people (30 GLH)
7. Supporting health and healthy living in healthcare, care and childcare (30 GLH)
8. Principles and theories of human growth and development (30 GLH)
9. Developing resilience for working in healthcare, care and childcare (30 GLH)



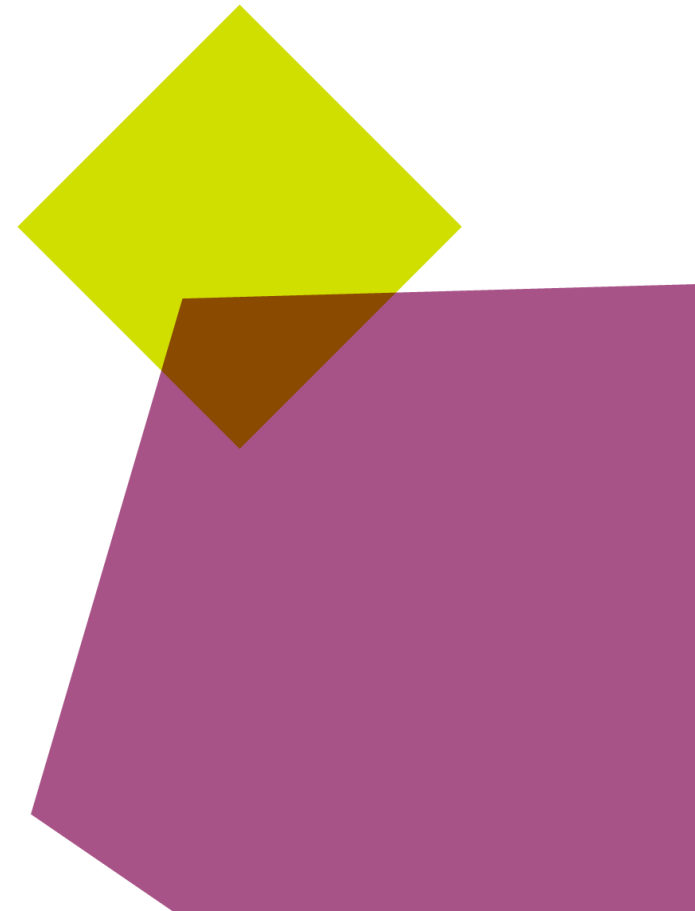
L2 Technical Certificate Work Placement Requirements

120 – 150 work placement hours work practice per year

Learner 'Work Placement Practice' can include:

- Work experience placements in Health, Care and/or Childcare set up, managed and supervised by the training provider – these work placements must feed into the qualification's summative synoptic assessment requirement.
- Volunteering work in Health, Care and/or Childcare practice (provided that the expectations of the employer is that the learner follows the same code of conduct as employees and is treated equal to other employees and as an employee).
- Paid employment in Health, Care and/or Childcare practice.

Please see the qualification handbook for further details



Work Placement Practice Workbook



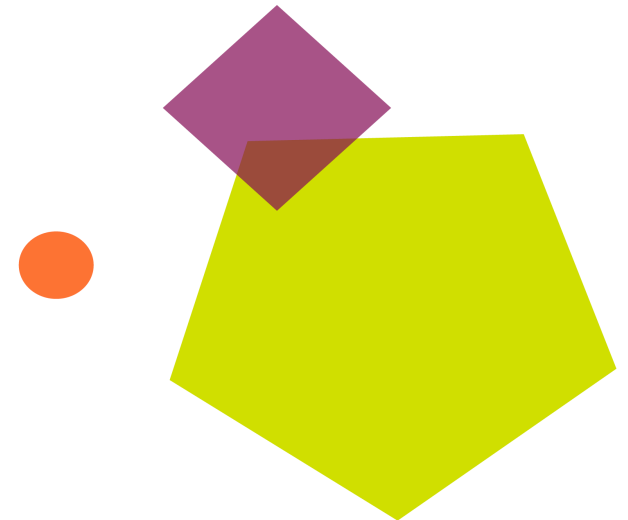
WORK PLACEMENT PRACTICE

LEARNER NAME:

Work Placement - Workbook



For learners undertaking the
Level 2 Technical Certificate in Healthcare, Care and Childcare





New L2

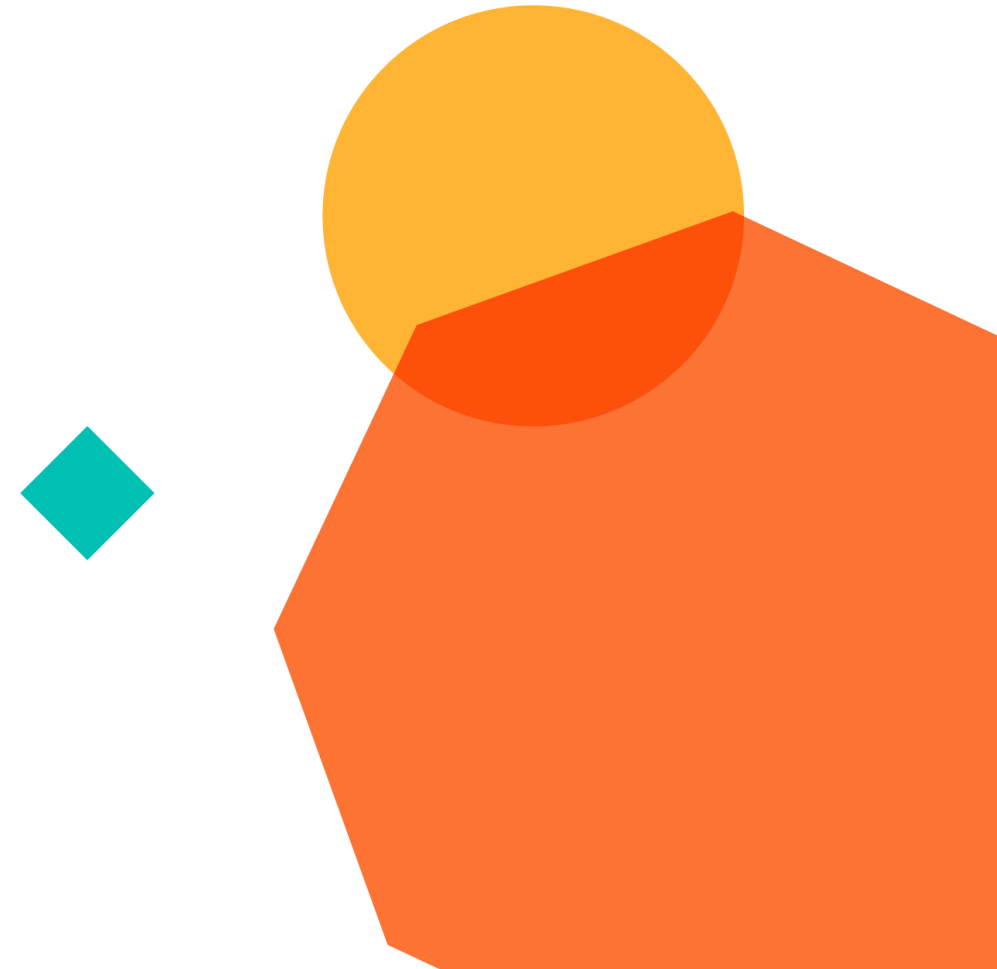
Technical Qualifications Assessment

Timeframes, support and examples

L2 Certificate - Summative Assessment

Summative Assessment Requirements

1. **Knowledge test** – externally set, externally marked – online or paper based (40% weighting)
2. **Synoptic exemplar assignment** – externally set, internally marked, externally moderated (60% weighting) to include:
 - Case study scenario – 2 tasks
 - Skills task – practical – observed by Assessor/tutor
 - Interview re work practice experience – recorded – completed by Assessor/tutor
 - Exemplar test and synoptic paper, available via the qualification webpage (3625-20)



Key assessment dates 2017

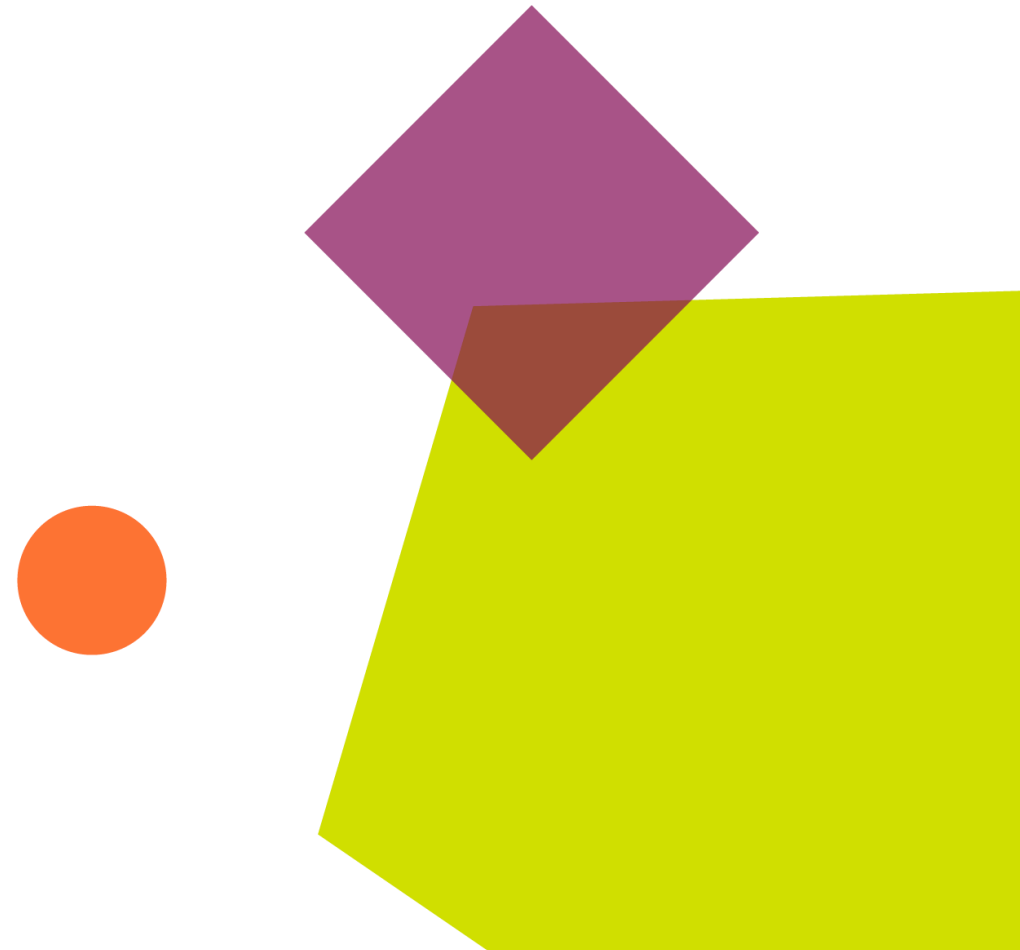
Event	Date
Opening of learner registration window	4 Sept 2017
Synoptic assignments released to centres	4 Sept 2017
Optional units released to centres	4 Sept 2017
Deadline for learner registration	3 Nov 2017
Booking window for Feb/Mar exams series	Immediately following learner registration
Booking window for synoptic assignments, optional units (if applicable) and employer involvement (KS5 only) open	Immediately following learner registration
Deadline for booking Feb/Mar exam series	30 Nov 2017

Key assessment dates 2018

Event	Date
Deadline for booking synoptic assignments, optional units (if applicable) and employer involvement (KS5 only)	12 Jan 2018
Synoptic assignments released to learners	5 Feb 2018
First exam series	Feb/Mar 2018
Results of first exam series	Six weeks following exam
Booking window for May/June exam series opens	One month before second exam
Booking window for May/June exam series closes	One week later
Deadline for submitting evidence and marks onto Moderation Portal for synoptic assignments	18 May 2018
Second exam series (for resits)	May/June 2018
Deadline for submitting evidence and grades onto Moderation Portal on optional units (if applicable) and employer involvement (KS5 only)	18 June 2018
Final results available	16 Aug 2018

L2 Certificate Centre Activity

- Review the 3625-20 qualification handbook and mandatory units
- Review the test paper exemplar
- Review the synoptic requirement exemplar
- Feedback



A healthcare worker in blue scrubs with a stethoscope around their neck is holding the hand of an elderly patient in a white hospital gown. The patient is sitting on a bed. The background is a bright, blurred hospital room. There are decorative geometric shapes in the bottom right corner: a purple octagon, a blue circle, and a dark blue pentagon.

KS5 L3 Technical Diplomas In Health & Care

KS5 Level 3 Design Principles in line with DfE Qualification Changes in England

Key Stage 5 (16 - 18) (L3) Tech Levels

360 GLH, 450 GLH, 540 GLH, 720 GLH, 1080 GLH

Made up of 30, 60 or 90 GLH Units

Progression: Enable entry to an apprenticeship or other employment, or progression to a related higher education course or further professional training.

Grading: P/M/D/D*

UCAS Points: 40 min – 420 max

Mandatory content and the contribution to overall grade must make up **at least 40%** of the qualification. Where qualifications have one or more pathway, the mandatory content (%) should apply equally to these.

Assessment: A proportion of the qualification content will be assessed externally (**minimum 25% for TCs and 30% Tech Level**). Must also include synoptic assessment.

Employer involvement: In design, recognition, delivery and or assessment, which raises the credibility of the qualification in the eyes of employers, parents and learners



L3 Technical vs Applied Generals – the difference being?

Technical Level Qualifications

- Level 3 Qualification
- On par with A Levels
- Recognised by employers, designed with employers, creates a clear path to work
- Equip learners with specialist knowledge and skills, enabling application onto an apprenticeship or into a specific job role
- Have UCAS points attached enabling application/progression into HE/Further Professional Training as desired

Applied General Qualifications

- Level 3 Qualification
- On par with A Levels
- Equip learners with transferable knowledge and skills
- For post-16 learners who want to continue their education through applied learning
- Main purpose is progression onto HE. They do not prepare learners to enter a specific job role.

KS5 What's available now?

- **Level 3 Advanced Technical Diploma in Health and Care**
(540 GLH) (3625-30) (QAN:601/7207/1)
- **Level 3 Advanced Technical Extended Diploma in Health and Care** (1080 GLH) (3625-31)
(QAN:601/7200/9)



[Link to qualification handbooks and exemplar assessments](#)



Employer Support Designed with Leading Employers

The following employers have provided letters of support for our new KS5 L3 technical qualifications in Health & Care:



They have been supported in their development from the following Higher Education institutions:

- **London South Bank University** – School of Health & Social Care
- **Northampton University** – Department of Health & Social Care
- **University of Plymouth** – School of Nursing & Midwifery
- **UWE Bristol and UWE Gloucester/University of the West of England** – Department of Nursing & Midwifery

Universities recognising and accepting our technical level qualifications in Health & Care

**Universities accepting our qualifications as meeting their entry requirements (all sectors with related university degree courses)
Acceptance will be subject to meeting entry requirement and grades.**

- University of Wolverhampton (partner and feeder) - Construction, Engineering, H&SC, EYE and digital
- University Chester, H&SC, EYE Land based
- University Middlesex - all related degree courses
- University Northampton - all related degree courses
- London South Bank University - all related degree courses
- University of Winchester - all related degree courses
- University of Sunderland - all related degree courses
- University of Huddersfield - all related degree courses
- Cardiff Met University
- Liverpool John Moores
- University of Suffolk – all related degree courses
- University of Salford - all related degree courses
- University of Bournemouth - all related courses
- University of Lincoln - all related degrees
- University of West England
- University of Edge Hill
- University of Plymouth
- University of Northumbria
- University of East Anglia
- University of Derby
- Anglia Ruskin University
- University of Gloucestershire
- University of Coventry – related 1080 Advanced Extended Diplomas considered on an individual basis dependent upon course content and courses applied for
- University of Bedfordshire
- University of Ulster- all related degree courses
- University of Birmingham (Russell) Nursing only

Universities recognising and accepting our technical level qualifications in some or all sectors

Universities accepting our technical qualification in meeting their entry requirements (all sectors with related University degree courses) 'Acceptance' will be subject to students meeting the HEI entry requirement/grades.

- University of Suffolk –all related degree courses
- University of Lincoln -all related degrees
- University of Brighton-all related degree courses
- University of Portsmouth LB - awaiting confirmation
- University of Northumbria
- University of Teesside

Psychology – University of Plymouth - where they run a minor pathway in human biology they would need to see the choice of unit(s) which each applicant has chosen to study but this can be done on a case by case basis

Psychology – University of Ulster - Faculty of Life and Health Sciences

Paramedic Science – University of Bedfordshire @ University of East Anglia – must have GCSE in M&E, Science and meet entry grades to University.

Occupational Therapy – University of East Anglia

Subject to entry grades, any University accepting a BTEC in Health & Social Care (not Health Science) – 90% of HEI's currently approached will consider our Advanced Technical Extended Diploma in Health and Care as equivalent. HEIs stipulate their own grade entry requirements for degree studies/professional training. These can vary from one HEI to another. Students need to be aware of this and any GCSE entry requirement's.

Colleges delivering the L2 and L3 Technicals in Health, Care and Childcare 2017/18 (England):

- West Suffolk College – L3
- South Devon College – L3
- Fareham College – L3
- Oldham College – L2 & L3
- Swindon College – L2 & L3
- Richard Huish College Taunton – L3
- Sussex Downs College - L3
- Newcastle College – L3
- Liverpool City College – L2
- South Essex College – L2 & L3
- City of Plymouth College – L3
- London & South East College (Greenwich) – L2

Colleges delivering the new **L2 Technical Certificate in Working in Dental Settings (3134-20)** - (leading to the L3 Dental Nursing Apprenticeship)

- South Thames College
- Bradford College



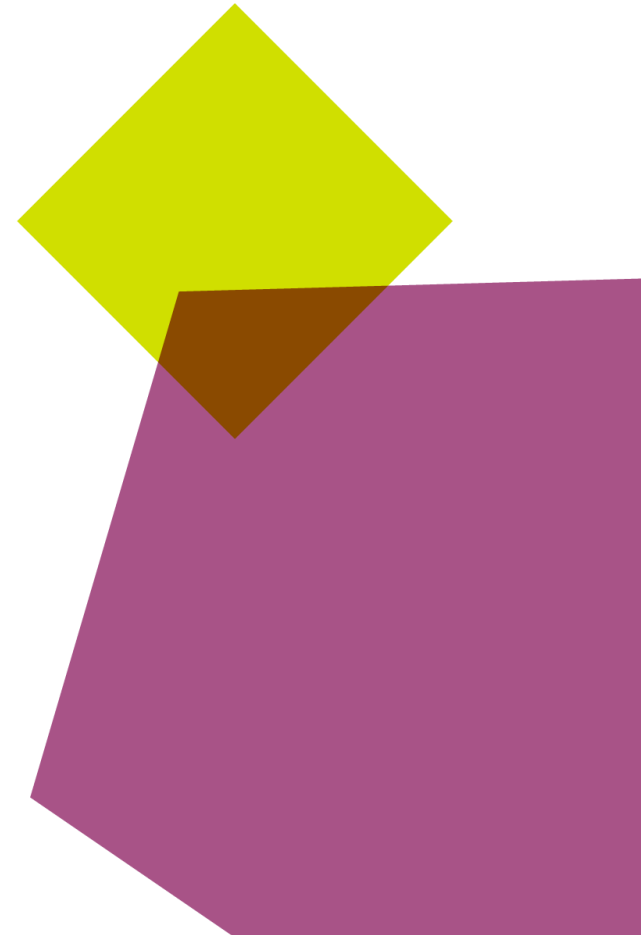
Level 3 Advanced Technical Diploma in Health and Care (540 GLH) (3625-30 OAN : 601/7207/1*)

Level 3 Advanced Technical Diploma in Health and Care (540 GLH)

9 mandatory units

- **Unit 301** Introduction to health and care
- **Unit 302** Personal and professional development in health and care
- **Unit 303** Equality and diversity in health and care
- **Unit 304** Effective communication in health and care settings
- **Unit 305** Safeguarding for all in health and care
- **Unit 306** Safe working in health and care
- **Unit 307** Understanding cognitive impairment
- **Unit 308** Understanding individual care needs
- **Unit 309** Quality service provision in health and care

Work placement practice – 200-370hrs per year – managed by the training provider



Year 2 - Level 3 Advanced Technical Extended Diploma in Health and Care (1080 GLH) (3625-31 OAN : 601/7200/9*)

Level 3 Advanced Technical Extended Diploma in Health and Care (1080 GLH)

(9 units in Year 1 as per previous slide plus 7 new mandatory plus choice of 2 pathways)

- **Unit 310** Social policy in health and care
- **Unit 311** Person centred working with children, young people, parents and carers
- **Unit 312** Provision for adults in health and care
- **Unit 313** Research in health and care
- **Unit 314** Life span developments – health and care needs
- **Unit 315** Understanding physical disabilities and exploring mental health wellbeing
- **Unit 316** Structure, organisation and function of the human body

Health Pathway

- **Unit 317** Principles and models of healthcare
- **Unit 318** Science in health and care

Care Pathway

- **Unit 319** Psychology and human behaviours
- **Unit 320** Sociology of health, care and wellbeing

Work placement practice – 200-370hrs per year – managed by the training provider

L3 Technical Certificate Work Placement Requirements

200-370 work placement hours/work practice per year

Learner 'Work Placement Practice' can include:

- Work experience placements in Health & Care set up, managed and supervised by the training provider – these work placements must feed into the qualification's summative synoptic assessment requirements.
- Volunteering work in Health & Care practice (provided that the expectations of the employer is that the learner follows the same code of conduct as employees and is treated equal to other employees and as an employee).
- Paid employment in Health & Care

Please see the qualification handbook for further details. Work placements must be in health and/or adult/children's social care (8-18yrs) settings and **NOT** in Early Years (0-7yrs) or classroom based educational settings.

Placements accessed by students so far include:

- Care Homes/Nursing Homes
- Rehabilitation centres
- District General Hospitals
- Local Charities
- Mental Health Teams
- Day Centres
- Hospice Care
- Special Schools – high health need students.
- Supported Living environments

"The work placement component is excellent. I can see such a difference in the students confidence and knowledge back in the classroom, they can contextualize their work so much better."

- Colette Burgess
West Suffolk College
Course Director / Lecturer

Work Placement Practice – Reflective Workbooks



WORK PLACEMENT PRACTICE

LEARNER NAME:

Reflective Workbook – Year 1



WORK PLACEMENT PRACTICE

LEARNER NAME:

Reflective Workbook – Year 2



For learners undertaking the Level 3 Advanced Technical Diploma/Advanced Technical Extended Diploma in Health and Care.

©2015 City & Guilds of London Institute. All right reserved



For learners undertaking the Level 3 Advanced Technical Extended Diploma in Health and Care.

©2015 City & Guilds of London Institute. All right reserved

“Some students have done so well in their placement they have secured paid employment.”

- **Colette Burgess**
West Suffolk College
Course Director / Lecturer

UCAS Points Enabling Progression to University

Grade	Level 3 Advanced Technical Certificate (360)	Level 3 Advanced Technical Diploma (450)	Level 3 Advanced Technical Diploma (540)	Level 3 Advanced Extended Technical Diploma (720)	Level 3 Advanced Extended Technical Diploma (1080)
Distinction*	56	56	84	112	168
Distinction	48	48	72	96	144
Merit	32	32	48	64	96
Pass	16	16	24	32	48

Other City & Guilds Technical Qualifications

Grade	Level 3 Extended Project Qualification	Using and Applying Mathematics (Core Maths)
A*	28	–
A	24	20
B	20	16
C	16	12
D	12	10
E	8	6



A level grade	UCAS points
A*	56
A	48
B	40
C	32
D	24
E	16



New L3 Technical Qualifications Assessment

"We have some parents who are health and care professionals themselves. They can see the true benefit of this model of learning and assessment."

- **Colette Burgess**
West Suffolk College
Course Director / Lecturer

L3 Assessment in Health & Care

Summative Assessment Requirement 2016/17/18:

Year 1

- **Knowledge test** – externally set, externally marked – online or paper based (40% weighting)
- **Synoptic exemplar assignment** – externally set, internally marked, externally moderated (60% weighting) to include:
 - Case study scenario – 3 tasks
 - Professional Discussion minimum 30 mins – recorded – completed by assessor/tutor/employer
 - Exemplar test and synoptic paper, available via the qualification webpage (3625-30)

Year 2


- **Knowledge test** – externally set, externally marked – online or paper based (40% weighting)
- **Synoptic exemplar assignment** – externally set, internally marked, externally moderated (60% weighting) to possibly include as an example: 2 case study assignments & Professional Discussion
- **Exam specs:** available for delivery centre's and **unit** focused exams as specified in the qualification handbooks

Key assessment dates 2017

Event	Date
Opening of learner registration window	4 Sept 2017
Synoptic assignments released to centres	4 Sept 2017
Optional units released to centres	4 Sept 2017
Deadline for learner registration	3 Nov 2017
Booking window for Feb/Mar exams series	Immediately following learner registration
Booking window for synoptic assignments, optional units (if applicable) and employer involvement (KS5 only) open	Immediately following learner registration
Deadline for booking Feb/Mar exam series	30 Nov 2017

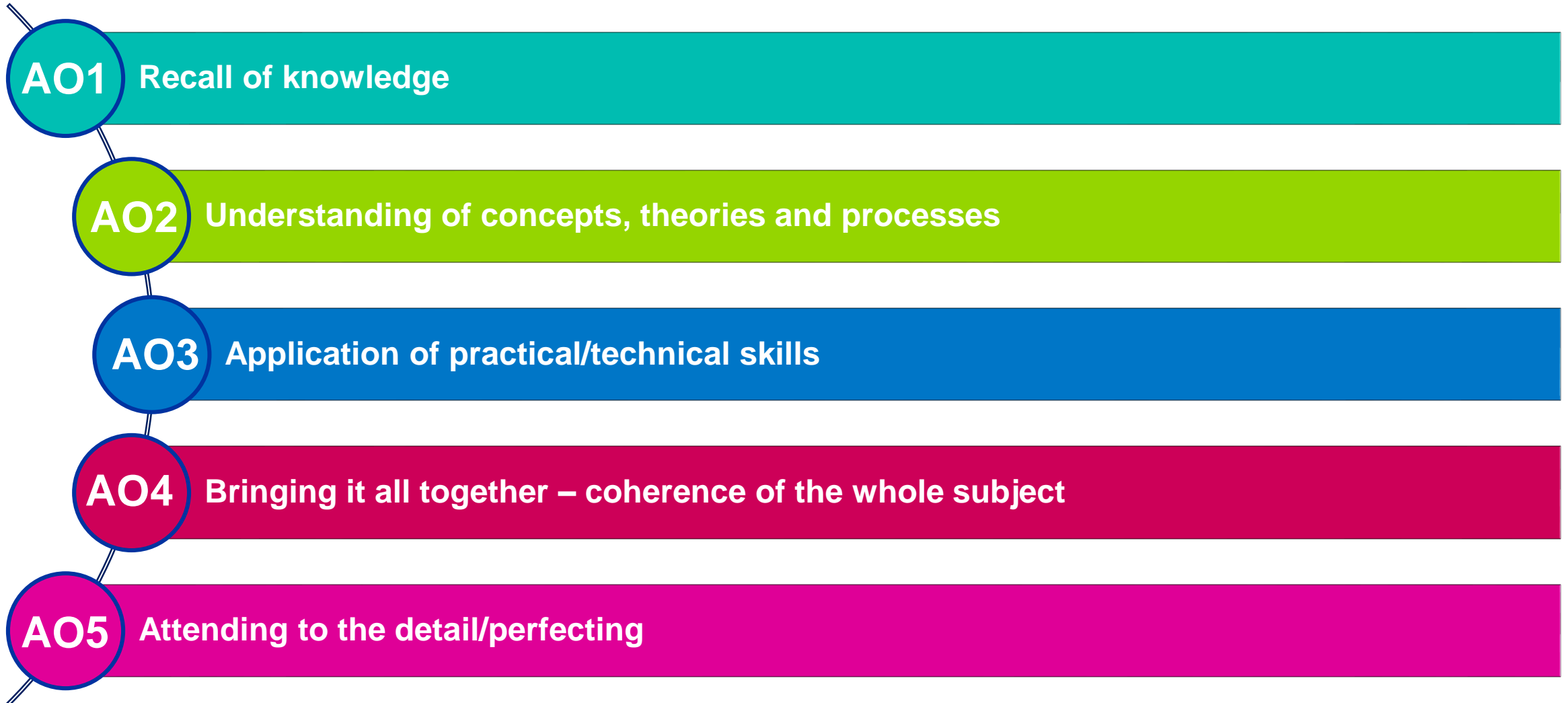
Key assessment dates 2018

Event	Date
Deadline for booking synoptic assignments, optional units (if applicable) and employer involvement (KS5 only)	12 Jan 2018
Synoptic assignments released to learners	5 Feb 2018
First exam series	Feb/Mar 2018
Results of first exam series	Six weeks following exam
Booking window for May/June exam series opens	One month before second exam
Booking window for May/June exam series closes	One week later
Deadline for submitting evidence and marks onto Moderation Portal for synoptic assignments	18 May 2018
Second exam series (for resits)	May/June 2018
Deadline for submitting evidence and grades onto Moderation Portal on optional units (if applicable) and employer involvement (KS5 only)	18 June 2018
Final results available	16 Aug 2018



Technical Qualifications Assessment Objectives

Assessment Objectives for Technicals – September 2017



Technicals and Moderation Support Team are here to help

Technicals and Moderation Support Team

E: moderationsupport@city&guilds.com

T: 01924 206 719

The Technicals and Moderation Support Team is on hand to deal with both internal and external queries regarding the Moderation process for Technical qualifications.

What we can support with:

- Customer queries regarding Moderation Process
- Technical Qualification Approvals (QAPs)
- Technical Qualification and Moderation Timelines
- Support and guidance with the Moderation Platform



Further information can also be found on our website:

www.cityandguilds.com/technicals



Further Assessment Information

- Produce exam and synoptic timetable yearly
- Two external exam windows including centre exam guides
- Synoptic assignments built with employers – realistic for employer needs e.g. practical/skill tasks
- Synoptic assignment released to providers at the start of the academic year
- End external assessment – on-line or paper based, short answer, include m/c and stretch and challenge questions
- No requirement to produce additional unit assignments - reduction in marking burden for lecturers
- Formative assessment can be built into individualise learners needs and embedded in teaching and learning practice
- Practice tests available for both end external test and synoptic assignments
- Longer synoptic assignment windows Feb-May
- To provide an additional stretch and challenge some learners may also want to complete the City & Guilds L3 Extended Project Qualification (2935-03)



Technical Qualification Approvals

If you're an existing City & Guilds centre looking to offer more qualifications including Technical Qualifications, you'll need to submit a Qualification Approval (QAP) Form within the Walled Garden Portal. Once this has been submitted, we'll be in touch to arrange approval. Please note that it can take up to 30 working days to complete this process.

You can find further information on how to submit your QAP in our Quality Portal User Guide available on our website.

If you would like to discuss your Qualification Approval in more detail, please contact your Business Manager, Technical Advisor or relevant Sales Executive.

Some Level 2 Technical Qualifications are eligible for automatic approval, if you have existing approval for the equivalent Level 3 in the same industry area. However this is not the case for all Level 2 Technical Qualifications.

For further information please visit our website or **contact the Technical Moderation Support team.**

Depending on the Technical Qualification you're applying for, our Moderation Support team may arrange an External Quality Assurer (EQA) approval visit, remote approval or a desk based approval.



Funding Guidance

Funding at Key Stage 4 (14-16)

- Funding for all City & Guilds Technical Qualifications appears on Section 96 for funding of 14-16 year olds
- The Project Qualification that sits within Workplace Skills also appears on Section 96 for funding of 14-16 year olds

Funding at Key Stage 5 (16-19)

- All City & Guilds Technical Qualifications appear on Section 96 for funding of 16-19 year olds
- The Project Qualification within Workplace Skills also appears on Section 96 for funding of 16-19 year olds. When delivered within Workplace Skills, the Project Qualification can be used to enhance a programme of study

Funding for 19+

- City & Guilds Technical Qualifications are also currently available for 24+ Adult Learning Loans, and from September 2016, will be available for 19+ FE loans
- City & Guilds Technical Qualifications have been identified as 'core qualifications' by the Skills Funding Agency (SFA), and can be used as part of the statutory entitlement for learners aged 19+ to gain their first full Level 2 or 3 qualification



Support Resources for L2 & L3 Technical Qualifications

What's available?

Documentation available now:

- 'Welcome Pack' when delivery starts with all key dates
- L2 and L3 Qualification handbooks
- L2 and L3 sample synoptic assessments
- Sample external end tests and exam guides
- Work Placement Work Books for L2 & L3
- L2 and L3 exemplar curriculum plans

For further information on the new KS5 L3 Extended Technical Diploma in Early Years and Childcare/ Early Years Educator please contact:



Suzi Gray
City & Guilds Technical Advisor
T: 07775 826899
E: Suzi.gray@cityandguilds.com

Qualification Support Resources

- Student SmartScreen for L3 Health & Care units to include Professional Discussion video to support the synoptic assessment
- National Technical Advisors to support your delivery teams in house including qualification 'on-boarding' events and guidance for approval via our EQAs
- In year in-house centre tutor support events for centres delivering the qualifications and on site centre visits by Advisors


Centre Support Guides – (see next slide)

- Employer Involvement Guide and Employer Planner and Tracker
- Technical Learning & Assessment Guide
- Marking & Moderation Guide
- 'Moderation Portal' – digital platform for external moderation purposes

Resources and Support

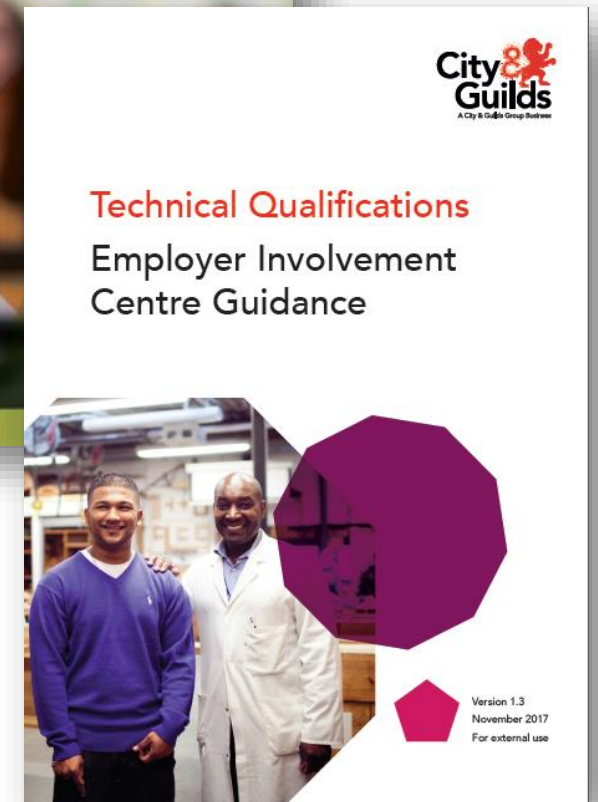
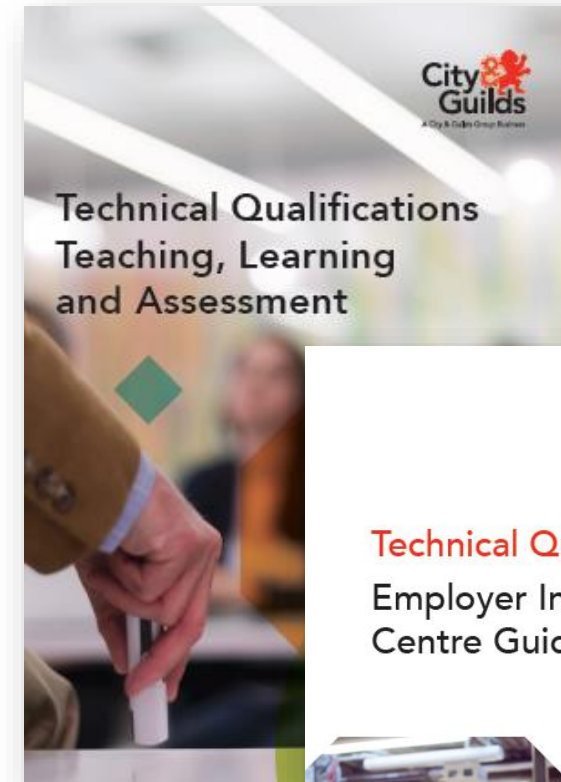
 [Qualification Handbook/Exemplar Assessments](#)

 [Employer Involvement Centre Guide](#)

 [Employer Involvement Planner & Tracker](#)
(Listed in documents with exemplar – need to be completed in draft at centre approval stage)

 [Technical Learning & Assessment Guide](#)

 [Marking & Moderation Guide](#)



Visit the Technical Qualification [Resources and Support page](#) on our website for more helpful guides and information.

Technicals and Moderation Support Team



moderationsupport@cityandguilds.com



01924 206 719

The Technicals and Moderation Support Team are available Monday to Friday 9am to 5pm to offer dedicated support with general queries regarding the moderation process for Technical Qualifications.

What we support with:

- Where to find the right documents and information
- General queries about technical qualifications
- Timeline for registrations, bookings and the moderation process
- Technical Qualification Approvals (QAPs)
- Exam timelines
- Moderation timelines
- Support and guidance with the Moderation Portal

Centre Support Team



centresupport@cityandguilds.com



0844 543 00 00*

Our Centre Support Team are available Monday to Friday 8am to 6pm to offer support with general qualification queries.

We are here to support you with:

- Qualification information
- Walled Garden support
- How to place orders and book assessments
- Technical issues
- E-volve support

**Calls to our 0844 numbers cost 5 pence per minute plus your telephone company's access charge.*



Questions?

If you would like to arrange an 'in house' information event for you and your colleagues after today then please get in touch.

Paul Robottom

Technical Advisor Health, Care & Childcare

E: paul.robottom@cityandguilds.com

T: 07833 334 131

"It is clear that real active learning is taking place."

- Colette Burgess

West Suffolk College

Course Director / Lecturer

