

Transitioning to the new Dental Nurse apprenticeship standards in England

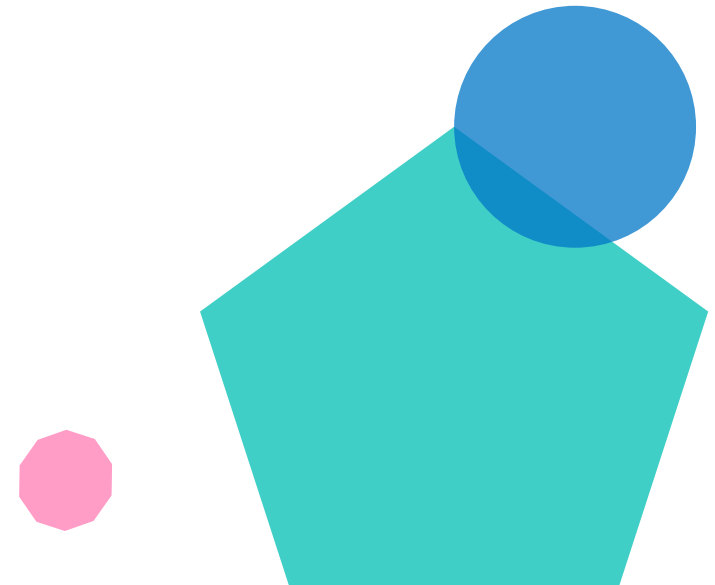
27 June 2017

Geraldine Donworth– Industry Manager



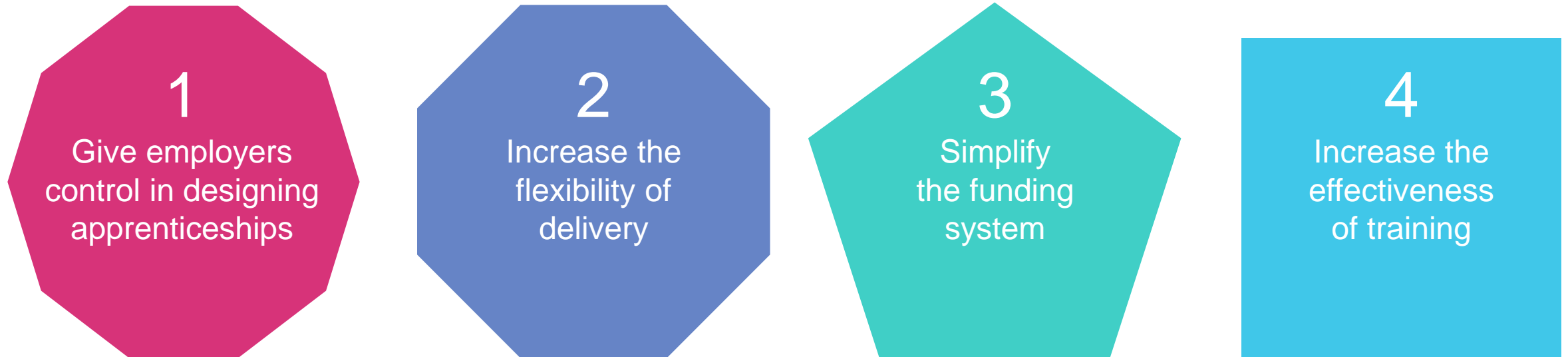
Contents

- Overview of the apprenticeship reforms
- Dental Nurse standard
- How we can support you to prepare for delivery and end-point assessment
- Next steps
- Q & A



Overview of the apprenticeship reforms

Apprenticeships are changing.
You are part of that change.



If you'd like a summary of the main changes between the new apprenticeship standards and SASE frameworks, our [12-minute recorded session](#) is a really useful watch.

Funding changes

Funding examples for frameworks (comparison of current and new funding)

Framework name and level	Funding band	16-18 employer incentive	Provider uplift for 16-18 (20%)	Total 16-18 provider incentive	Max. possible total provider funding
Health - Dental Nursing Framework	Band 3 £2,500	£1000	£500	£1000	£4000

New standards equivalents

Standard name and level	Funding band	16-18 employer incentive	Total 16-18 provider incentive (inc £1000)	Max. possible total provider funding
Dental Nurse Level 3	Band 9 £9000	£1000	£1000	£10,000 NB EPA needs funding from this
Dental Practice Manager Level 4	Band 9 £9000	N/A	N/A	£9000 NB EPA needs funding from this

Dental Health standards

The standards were developed by employers, including:

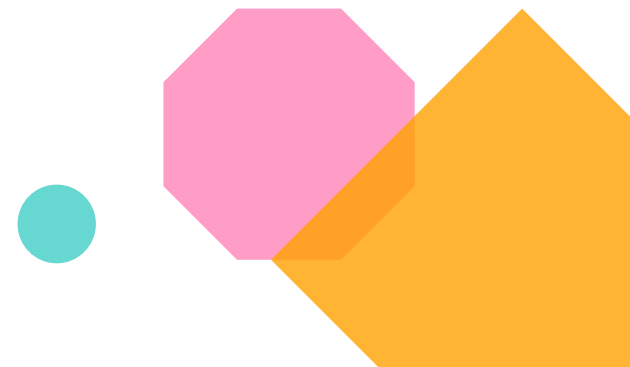
- Genix Healthcare
- 211 Dental
- 543 Dental Care Centre Ltd
- Azam & Associates Healthcare Ltd
- Bupa Dental Services
- Den Dental Group Practices Ltd
- Integrated Dental Holdings
- Oasis Healthcare Ltd
- Rodericks Dental
- Smile Care Group
- Acodent Dental Laboratory
- Aesthetic Dental Laboratory
- Bremandent Premier (Bristol) Ltd
- CosTech Elite
- Knight Dental Design
- Optimum Dental Laboratories
- PDS Dental Laboratory
- A S Harrison Lab Ltd
- S4S (UK) Ltd
- Sparkle Dental Labs

Dental Health standards

- Dental Nurse (Level 3)
- Dental Practice Manager (Level 4)
- Oral Health Practitioner (Level 4) – in development

There are additional standards which can be found at this link

[Dental health apprenticeships standards and assessment plans](#)



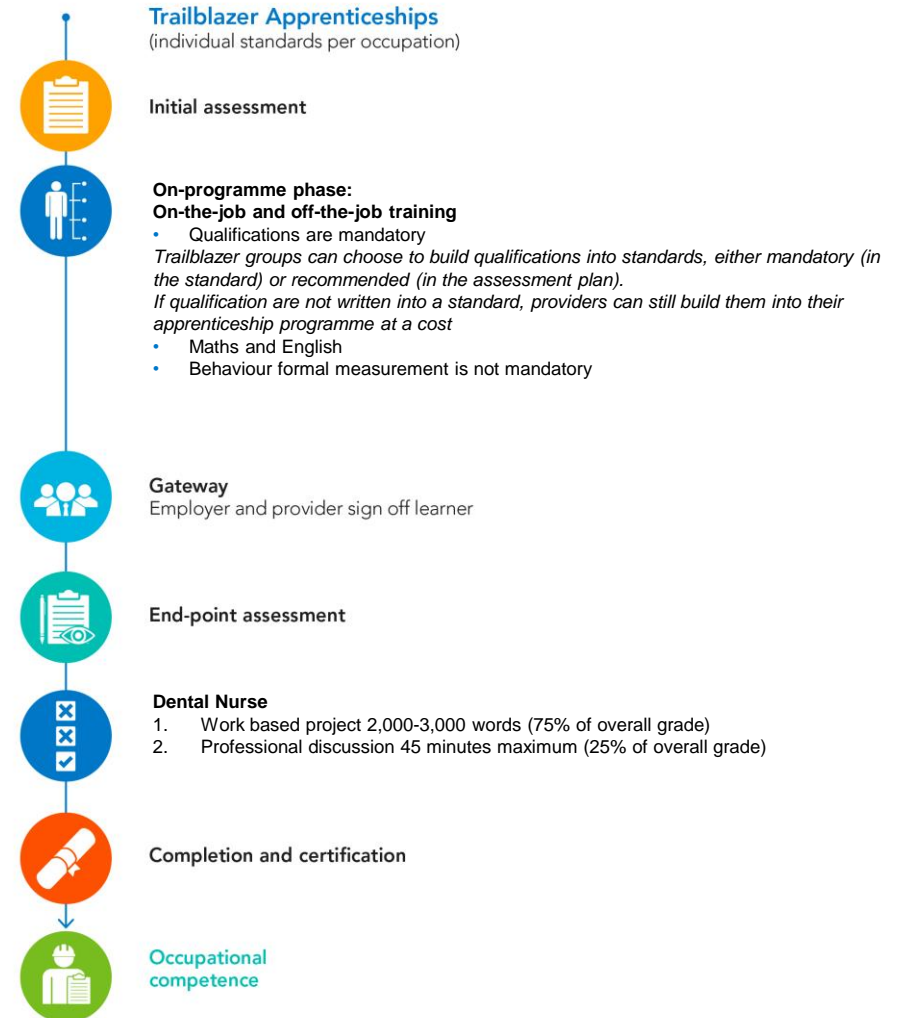
Dental Nurse standard

Maths and English requirements

- Level 2

Gateway requirements

- Level 2 maths and English
- Diploma in Dental Nursing Level 3



How we can support you to prepare for delivery and end-point assessment - resources

Support networks

EPA Packs

Consultancy

Qualification
approved by GDC

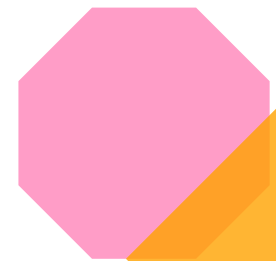
CPD Events

Excellent maths &
English offer

Webinars

Learning
Assistant
E-portfolio

Technical
Advisers



End-point assessment pack

For customers

Key document for customers for the planning and delivery of the apprenticeship.

It will include:

- Information on roles and responsibilities in the process
- Guidance on how to evidence Gateway
- Instruction and guidance on how to book EPA
- Guidance on how to support apprentices with the work based project and project themes
- Guidance on what learners can expect from Professional Discussion
- Instructions for setting up an environment for the Professional Discussion



End-point assessment pack

For Independent End Assessors (IEAs)

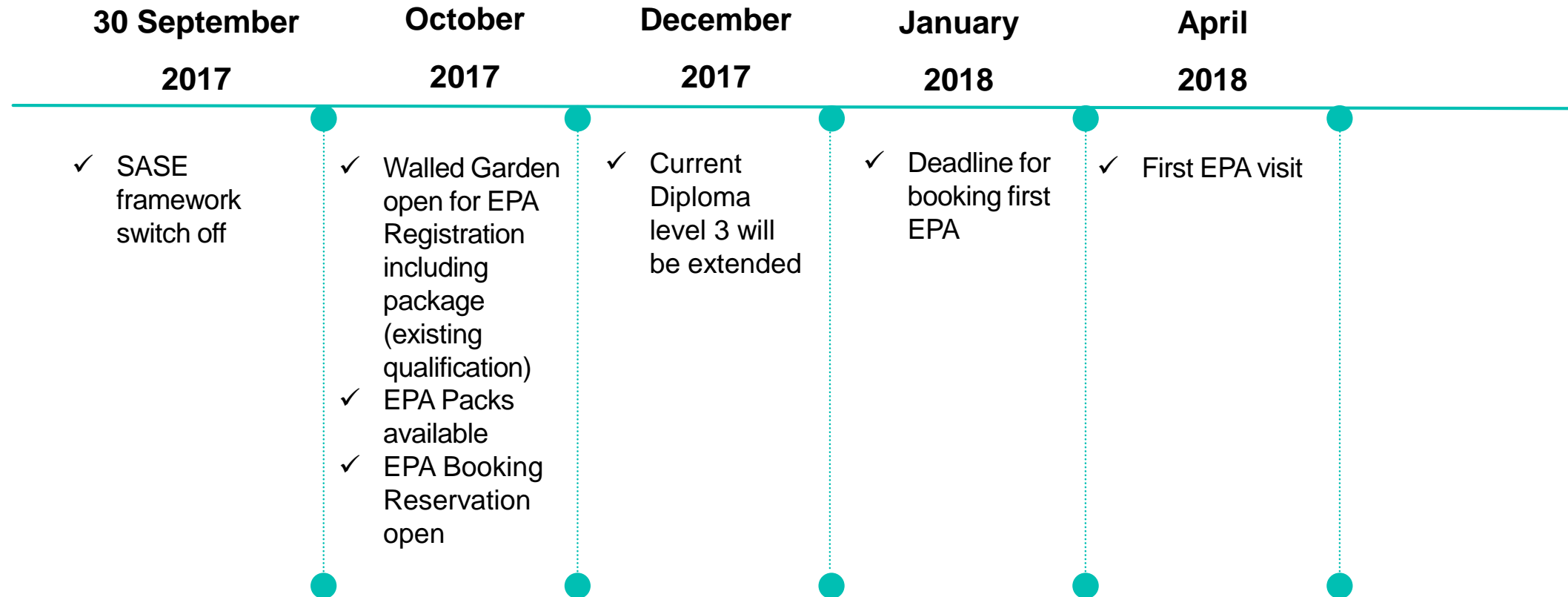
Key document for IEAs to conduct end assessment and grade candidates.

It will include:

- Marking criteria
- Grading criteria
- Guidance on feeding back to the apprentice about their work based project
- Instructions and guidance on how to conduct the professional discussion
- How to record the professional discussion and their judgement
- Next steps explained to the apprentice



Timeline of events – Dental Nurse Level 3



Price and offer

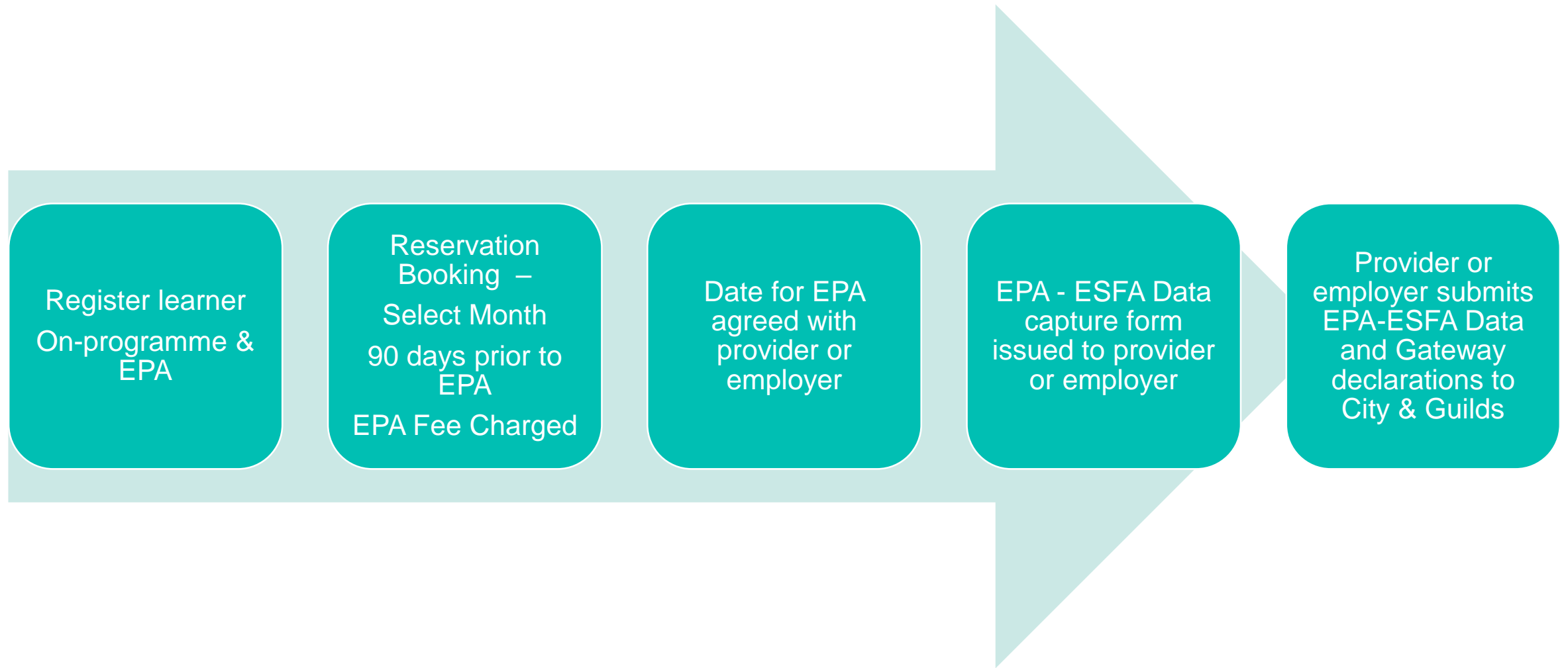
Standard	On programme	EPA only	Package on programme and EPA	Resit
Dental Nurse	Existing registration costs for qualification	£600	£720	Project £200
		£50 registration	£170 registration	Professional Discussion £400
		£550 reservation fee	£550 reservation fee	

Approval process

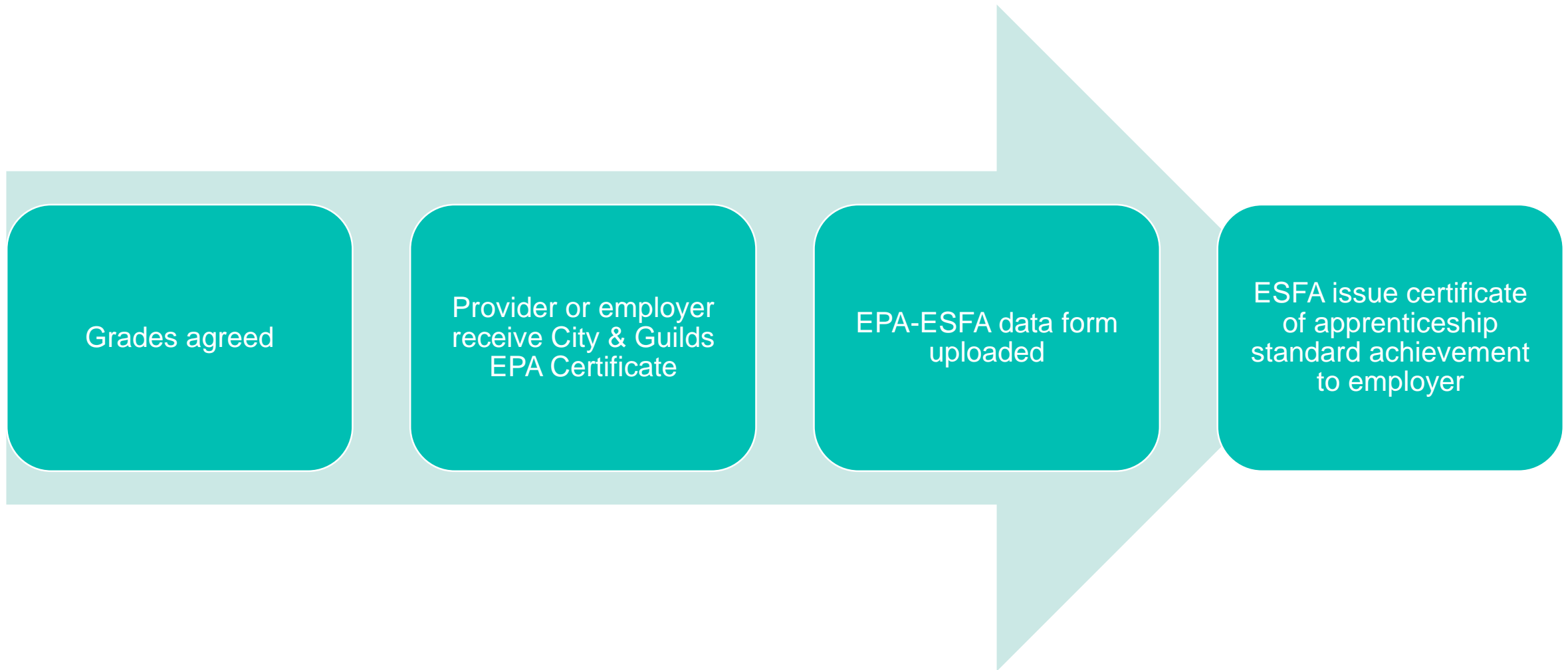
- If you are a new City & Guilds provider you will need to gain end-point assessment (EPA) financial approval.
- If you are a current City & Guilds centre you will also need to apply for EPA approval for the occupation.
- The assessment EPA pack will be available on the website once you have registered
- If you would like to deliver the qualification linked to the standard, you will need to apply for Qualification Approval (QAP).
- If you are delivering the qualifications you must ensure that your staff are able to demonstrate they have the occupational expertise required.



End-point assessment reservation



After successful end-point assessment



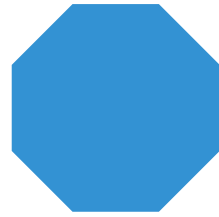
Being part of the decisions

We welcome applications for Independent Assessors to join our team for assessing and grading end-point assessment for Dental Nurse.

Minimum requirements

- Hold a recognised assessor qualification (eg Level 3 Award in Assessing Competence in the Work Environment, Level 3 Certificate in Assessing Vocational Achievement, A1 or D32/D33) .
- Have no connections with the assessment centre and/or apprentice in order to maintain objectivity
- Have current registration status with the General Dental Council
- Recent experience of working in a high quality dental setting and demonstrable Continuing Professional Development
- Be fully conversant with the standards and criteria being assessed
- Have experience in interviewing techniques
- Experience of marking assessments

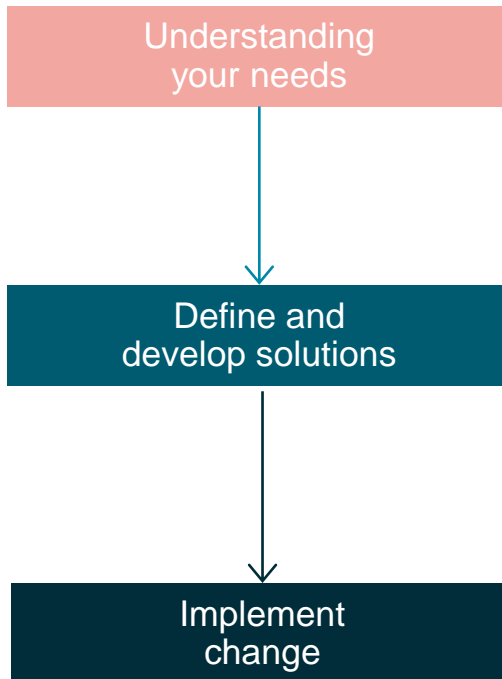
The screenshot shows the City & Guilds website. At the top, there is a search bar with the text 'SEARCH EVERYTHING', 'FIND A COURSE OR QUALIFICATION', and 'FIND A CENTRE'. Below the search bar is a navigation menu with links: 'WHAT WE OFFER', 'QUALIFICATIONS', 'APPRENTICESHIPS', 'TECHBAC', 'DELIVERING OUR QUALIFICATIONS', 'INTERNATIONAL', 'NEWS & INSIGHT', and 'HELP & SUPPORT'. The main heading is 'Become an Independent End-point Assessor' with a circular image of a young man in a red shirt. Below the heading, there is a sub-heading 'Become an Independent End-point Assessor' and a paragraph: 'We are currently accepting applications from suitable candidates to become Lead and Independent End-point Assessors.' There is also a link 'Apply now'. On the right side, there are social media icons for Facebook, Twitter, and LinkedIn, and a section titled 'NEW APPRENTICESHIPS STANDARD OFFERS' with three links: 'Teaching & learning resources', 'End Assessment service', and 'New Apprenticeship Standards'.



Next steps

And if you want to take things further with us

Apprenticeship consultancy offer



Areas of apprenticeship consultancy and training

Audit your current apprenticeship strategy

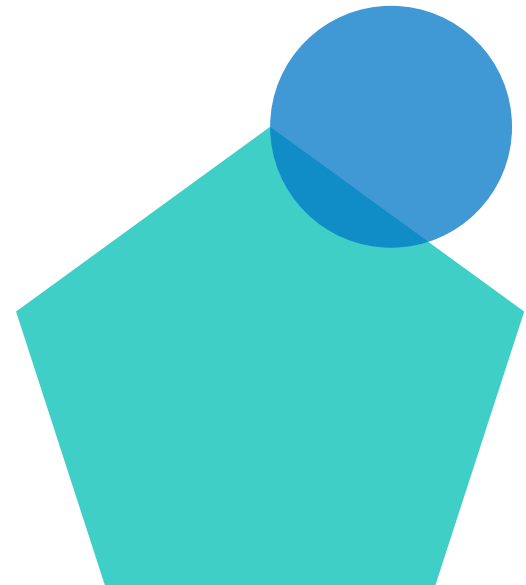
A root-to-branch audit that assesses your current strategy and identifies opportunities for growth. You'll receive an on-site consultation from a City & Guilds apprenticeship specialist who has experience in commerce and further education.

Defining your apprenticeship offer

A carefully constructed plan defining your new strategy and providing a framework for implementation. Our consultants will draw up an improved offer that takes advantages of the new opportunities for growth.

Upskill your team

Expert-led training courses that equip your staff to deliver your new apprenticeship strategy. We offer five different courses to meet your needs around commercial development, contract negotiation, apprenticeship support, funding, and trainer coaching.



Support and resources available

Find all our past and forthcoming workshops, webinars and events [here](#).

See our apprenticeship, consultancy and events pages on the City & Guilds website:

<http://www.cityandguilds.com/apprenticeships>

<http://www.cityandguilds.com/what-we-offer/centres/what-is-advance>

<http://www.cityandguilds.com/what-we-offer/centres/improving-teaching-learning/events>

Also look at the Government's information:

[Provider/ employer apprenticeship funding rules 2017/18](#)

[Apprenticeship funding policy and funding bands sheets](#)

[Register of Apprenticeship Training Providers
Guidance](#)

[Apprenticeship funding from May 2017 – policy paper](#)

[Technical Funding Guidance](#)

[Apprenticeship standards](#)

[Becoming an Employer/Training Provider](#)



Thank you

- Keep up to date – register for email updates: <http://www.cityandguilds.com/what-we-offer/centres/email-updates>
- To be involved in the developments of the new qualifications: businessskills@cityandguilds.com
- For more information on the new standards, our learning resources (including demos), and how we can support your business: directsales@cityandguilds.com
- For additional information on end-point assessment: endpointassessment@cityandguilds.com



Any questions?

