



Important Update: VN-PBA and OSCEs

Dear Centre,

Please find below important information regarding the PBA and OSCEs for City & Guilds Veterinary Nursing qualifications. Please share all information with candidates and/or training practice staff where necessary.

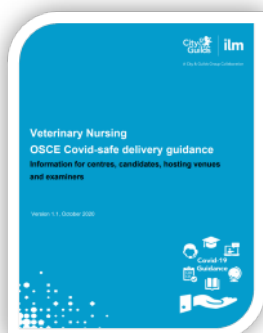
Covid-19 guidance documents

We are pleased to share our new guidance documents for OSCEs and the VN-PBA during the Covid-19 pandemic. Please ensure you familiarise yourself with these documents.

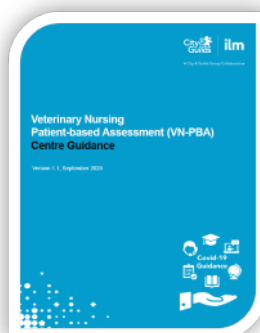
These are available on our dedicated web pages:

[Patient-based Assessment \(VN-PBA\)](#)

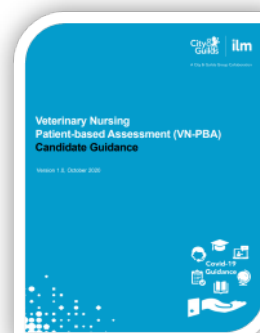
[Objective Structured Clinical Examination \(OSCE\)](#)



[OSCE Covid-safe delivery guidance](#)



[PBA Centre guidance](#)



[VN-PBA Candidate guidance](#)

VN-Patient-based Assessment

Centre and candidate guidance

We have produced a [centre guide](#) and [candidate guide](#) for phase 2 of the PBA which provides clear details and instructions on our requirements. We encourage centres to read through both documents and share the candidate guide with those planning to enter the assessment. The guides can also be shared with training practices.

GDPR

We recognise that there have been challenges and confusion across candidates, centres, and some of our own examiners throughout phase 1 of the PBA regarding GDPR. After an internal review we have concluded that we cannot guarantee GDPR requirements have been applied consistently and fairly across all candidate in phase 1, and therefore have made the following decisions, which will apply to all candidates who were withdrawn due to GDPR in phase 1:

- We **will not** charge an additional fee for re-entry.

- The original PBA **will not** count as an attempt.
- Candidates will be offered the opportunity to complete the PBA again before the end of phase 1 (by Sunday 25 October) where possible, otherwise will retain their position in phase 2 as early as possible.

Our team is working through these candidates and contacting centres to discuss the remaining slots we have available. Please note that this decision is only for candidates in phase 1. Requirements for phase 2 remain as previously communicated and in our [PBA centre guidance](#) document.

Phase 2

As you know, phase 2 has been delayed and extended to provide a realistic opportunity for candidates to complete the PBA if they chose to do so. However, candidates could choose to withdraw and be re-entered for the OSCE in November-December instead (see details below in the OSCE section), or complete with an alternative AO.

Please remember that the PBA remains the most secure option for candidates should OSCEs be further impacted by local or national lockdown measures implemented by UK governments.

Our team is currently in the process of confirming the final few allocations for phase 2 with examiners. We will confirm the dates and times for candidate PBAs to centres by Friday 09 October. Further key dates:

Key activity	Date
Window opens for submission of case reports	Monday 12 October 2020
Deadline for submission of case reports	Friday 23 October 2020
Assessment window opens	Monday 02 November 2020
Assessment window closes	Sunday 20 December 2020
Results Day (Provisional)	Monday 18 January 2021

If you need give access to the submission portal to additional members of staff, please let us know via email providing your centre number, their full name and email address.

Whilst the result day for phase 2 is currently planned for 18 January, we are hopeful that following phase 1 regression analysis we will be able to determine the pass mark which will then be applied to phase 2. This will allow us to speed up the results process once marking and IQA has been completed. Its likely therefore that we will release result earlier then planned for phase 2 in smaller batches as we work through the assessment window. We will provide further detail on this in November.

Updated OSCE series

OSCE dates

We continue to work with hosting venues and examiners to confirm the details for the OSCE series in October and November-December.

October series	
The October series will be prioritised for those candidates who were booked onto the March 2020 OSCE and who have not been entered for either phase 1 or phase 2 of the PBA.	
We will also prioritise any candidate booked onto Phase 2 entered into the March OSCE who wishes to withdraw and complete this OSCE instead.	
Start	Thursday 29 October
Finish	Sunday 08 November
Results available (provisional)	Monday 07 December 2020

November-December series	
The November-December series will be prioritised for the following:	
<ul style="list-style-type: none"> • Any candidate entered for the March 2020 OSCE who has not been entered for either phase 1 or phase 2 of the PBA, who was unable to sit the October series • Any candidate due to complete their OSCE by 31 July who has been unable to complete the PBA (including withdrawn candidates) • Any candidate entered for phase 2 who has been withdrawn 	
Start	Thursday 12 November
Finish	Sunday 13 December
Results available (provisional)	Monday 18 January 2021

Covid-safe delivery

Centres should familiarise themselves with the requirements set out in our [OSCE Covid-safe delivery guidance](#) document to ensure their candidates are prepared for the upcoming OSCEs. It is vital that everyone involved understand the new requirements, and particularly the equipment and PPE candidates must bring. This document **can** be shared with candidates as it does not contain any sensitive information.

OSCE Dates and locations

To deliver this assessment in a safe and secure way, reducing the risk to those involved, the maximum number of candidates that can be examined in one venue at a time is 6.

There will be one morning session (usually 10.00-12.30) and one afternoon session (usually 14.00-16.30) per venue.

We will publish the dates and location information on our OSCE web page [here](#) by Wednesday 07 October.

October series - next steps

Following this update, we will begin to contact the centres who we understand have candidates who have not taken the PBA in phase 1 and who were booked onto the March 2020 OSCE. We will provide further information in this email as it will be specific to each centre. The booking form will be pre-populated with candidate details, and you will be asked to confirm which is the preferred venue for each candidate and whether they have any reasonable adjustment requests specific to the OSCE.

All centres will be requested to provide a 'reserve' list of candidates on a second tab of the booking form (i.e. all those remaining who eligible to complete the OSCE before 31 July 2020 and are not entered for the PBA) which we will then use should any spare capacity be identified. These will be allocated by City & Guilds based on the nearest hosting venue location and in order given by the centre on the list. **We cannot guarantee any of these students will be allocated a place in the October series.**

You must respond to this email urgently to ensure we reserve the spaces for your candidates. You **do not** need to make any bookings on Walled Garden.

Following this, we will confirm the exact date, time, and location for your candidates, as well as any candidates selected from the 'reserve' list.

The following will be posted onto our OSCE web page [here](#):

- Candidate briefing video
- Candidate entry declaration
- Specific venue requirements

November series – next steps

Once we have confirmed all the candidates for the October series, we will then start the allocation process for the November-December series using the 'reserve' list of candidates. Further communication will be provided towards the end of October.

Contact us

For all queries relating to quality assurance, OSCEs and the PBA for Vet Nursing please contact:

Vet Nursing Quality team

E: VeterinaryNursing@cityandguilds.com

T: 0300 303 5352 (option 2, option 4)

Kind regards,

Vet Nursing Quality team | Quality Delivery

City & Guilds | ILM

cityandguilds.com | i-l-m.com



A City & Guilds Group Collaboration