

Welcome to the T Level Occupational Specialism network

Construction: On-site and Building Service Engineering (BSE)

The network will begin shortly a second smart device may be useful to access our website as part of the network activities!



Welcome to the T Level Occupational Specialism network

Construction: On-site and
Building Services Engineering (BSE)

Using the Teams platform



**If you need to comment or have a question raise your hand.
Use the chat function as well to ask questions.**



Please mute when not speaking to avoid background noise.



Feel free to start your video. We will be recording the session if that's Ok with everyone



Agenda

1	Introduction to the network panel
2	Website navigation and activity
3	Qualification handbook content and activity
4	Specialism content discussion
7	Hodder Education Resources
8	Q&A



- Contact details for technical advisors
- How to navigate the website for information
- How to use the qualification handbook content
- Guidance and support from us and Hodder Education



- Progression
- Industry placements
- Assessment content in detail



Construction & BSE T Level Team



Jason Howe

Technical Advisor- Construction

M: 07912 042313

Jason.Howe@cityandguilds.com



Michael Scarrott

Product Specialist- EAL

M: 07970 772015

Michael.Scarrott@eal.org.uk



Rob Mallender

Technical Advisor- BSE

M: 07789 926163

Robert.Mallender@cityandguilds.com



Naz Lewis-Humphrey

Industry Manager- Construction

M: 07795 590919

Naz.Lewis-Humphrey@cityandguilds.com



Salim Visram

Industry Manager- BSE

M: 07774 017435

Salim.Visram@cityandguilds.com



Alison Whittle

Technical Advisor- Post 16

M: 07808330385

Alison.Whittle@cityandguilds.com



Website navigation and course handbook activity

Separate smart device may be beneficial

Website Navigation

Follow along on your smart device

From the homepage [home](#) search for the qualification number 8710 BSE or 8711 for Construction



SEARCH EVERYTHING FIND COURSE / QUALIFICATION FIND CENTRE

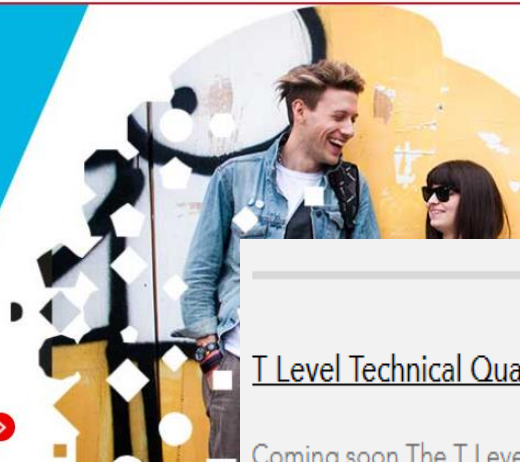
Search the site: [SEARCH](#)

[COVID-19](#) [OUR OFFER](#) [QUALIFICATIONS](#) [APPRENTICESHIPS](#) [TECHNICALS](#) [T LEVELS](#) [QUALIFICATION DELIVERY](#) [INTERNATIONAL](#) [EVENTS](#) [HELP](#)

Wave 2 T Level website announcement

T Level On-Site Construction and Building Services Engineering technical qualifications now approved and accredited.

[VIEW THE FULL SPECIFICATION >](#)



Then select level 3

[T Level Technical Qualification in Building Services Engineering for Construction \(8710\)](#)

Coming soon The T Level Technical Qualification in Building Services Engineering for Construction allows learners to gain an understanding of the BSE industry and the sector. Topics covered include Health and Safety, construction science principles, sustainability in the construction ind

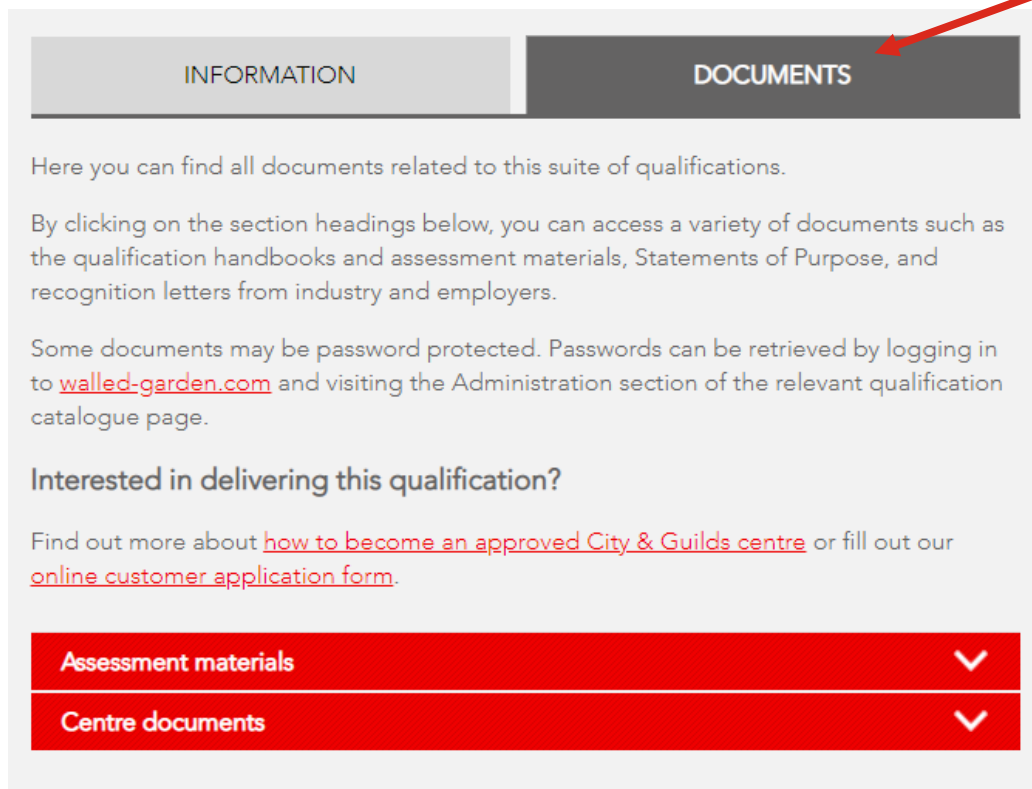
[Level 3](#)



Website Navigation

Follow along on your smart device

All our documents are located under the documents tab



The screenshot shows a website interface with two tabs: 'INFORMATION' and 'DOCUMENTS'. The 'DOCUMENTS' tab is selected and highlighted in dark grey. Below the tabs, there is a paragraph of text, a list of document types, and a section for interested parties. At the bottom, there are two red buttons with white text and downward arrows.

INFORMATION DOCUMENTS

Here you can find all documents related to this suite of qualifications.

By clicking on the section headings below, you can access a variety of documents such as the qualification handbooks and assessment materials, Statements of Purpose, and recognition letters from industry and employers.

Some documents may be password protected. Passwords can be retrieved by logging in to walled-garden.com and visiting the Administration section of the relevant qualification catalogue page.

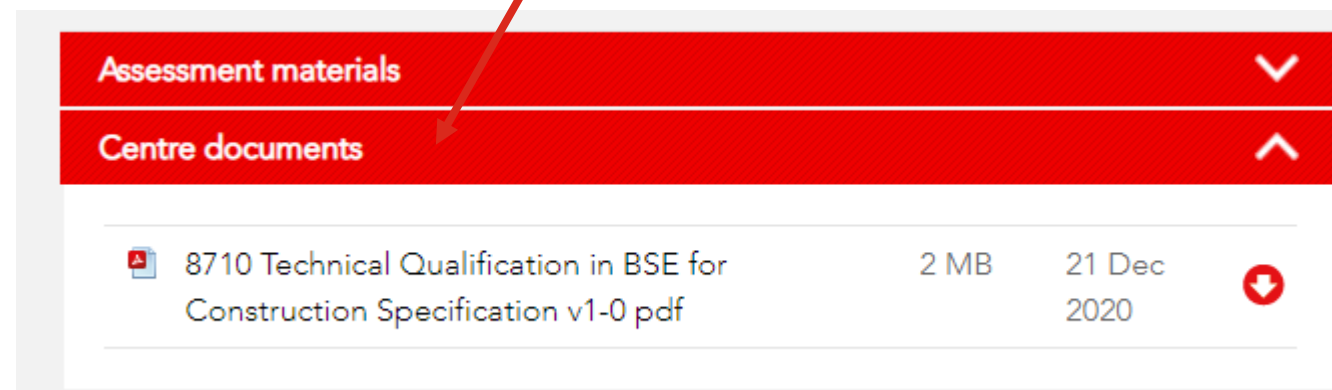
Interested in delivering this qualification?

Find out more about [how to become an approved City & Guilds centre](#) or fill out our [online customer application form](#).

Assessment materials

Centre documents



You can then open the course handbook from the centre documents drop-down box



The screenshot shows a red drop-down menu with two options: 'Assessment materials' and 'Centre documents'. The 'Centre documents' option is selected and expanded, showing a list of documents. The first document listed is '8710 Technical Qualification in BSE for Construction Specification v1-0 pdf'.

Assessment materials

Centre documents

	8710 Technical Qualification in BSE for Construction Specification v1-0 pdf	2 MB	21 Dec 2020	
---	---	------	-------------	---

Activity 1 (5mins) then Q&A

1. Find the GLH for the specialism as well as the POS and component numbers (p11-12)

T Level Technical Qualification for Building Services Engineering in Construction

Programme of study (POS)	City & Guilds component number	Component title	Component level	GLH	TQT
--------------------------	--------------------------------	-----------------	-----------------	-----	-----

2. Find the resource section and requirements in particular for centre staffing (p15-16)

Resource requirements

Centre staff should familiarise themselves with the structure, content and assessment requirements of the qualification before designing a course programme.

Initial assessment and induction

An initial assessment of each learner should be made before the start of their programme to identify:

- If the learner has any specific learning or training needs
- support and guidance they may need when working towards their qualification
- the appropriate type and level of qualification

We recommend that centres provide an introduction so that learners fully understand the requirements of the qualification, their responsibilities as a learner, and the responsibilities of the centre.

Centre staffing

Staff delivering and assessing these qualifications must be able to demonstrate that they meet the following requirements. They should:

3. Find the induction requirements (p19-21)

Initial assessment and induction

An initial assessment of each learner should be made before the start of their programme to identify:

- if the learner has any specific training needs
- support and guidance they may need when working towards their qualification
- the appropriate type and level of qualification.

City & Guilds recommends that centres provide an introduction so that learners fully understand the requirements of the qualification, their responsibilities as learners, and the responsibilities of the centre. This information can be recorded on a learning contract.

Technical content of the occupational specialism

Qualification handbook & Core component



Onsite core content

Learning Outcome → 1. Health and safety

Criteria

This section of the specification outlines the subject or topic that needs to be delivered and assessed. Criteria are often supported by 'range'

1.1 Construction **legislation and regulations.**

Range:

Legislation and regulations - Health and Safety at Work Act (HASAWA), Reporting Injuries, Diseases and Dangerous Occurrences Regulations (RIDDOR), Control of Substances Hazardous to Health (COSHH), Construction (Design and Management) (CDM) regulations, Provision and Use of Work Equipment Regulations (PUWER), manual handling operations regulations, Personal Protective Equipment (PPE) at work regulations, work at height regulations, Construction (Design and Management) Regulations 2007, control of noise at work regulation, environmental regulations, waste management.

provides the detail of the information required to be delivered as part of that topic. For example, with BSE systems as the topic, the range would list the systems that would need to be covered in delivery and assessment

What do learners need to learn? The primary purpose of these sections is to support the delivery of the content in the criteria.
These sections provide context in relation to the depth and breadth to which a subject or topic needs to be taught.

What do learners need to learn?

The role of legislation and regulations in the construction industry, including the role of the Health and Safety Executive (HSE). How current legislation impacts employer, employee, and construction projects within a domestic and commercial setting.

The bodies responsible for maintaining and updating legislation and regulations. How to obtain legislation and regulations and the importance of ensuring the information is current.

To include regulations relating to provisions of welfare facilities during construction work (toilets, washing facilities, drinking water, heating, changing rooms and lockers, rest facilities etc) and access to information related to welfare responsibilities onsite.

The implications of not adhering to the legislation on the public, client, business and employers and employees including enforcements, penalties, and imprisonment.

The difference between statutory and non-statutory legislation, where each legislation is applicable in terms of construction activities.

Skills

CSB
EC5

Relate to Core Skills (p20-22) and General competencies in English, Mathematics and Digital Skills (p23-25)



Qualification handbook & Core component activity

Go to the index at the front of the handbook find the section with the content of the specialism or specialisms

5 min to review content of the chosen specialism

Q&A session

Carpentry & Joinery- Discussion

Following feedback from our providers, consultants and employers a lot of concern has been raised around Carpentry & Joinery being combined for delivery and assessment, when they are technically two different trade occupations. Therefore we have produced a very short survey to gain further feedback that we can present to IfATE for consideration of splitting Carpentry & Joinery, either entirely or for assessment.

Your opinion and feedback is very important. Therefore would you please follow the link below or scan the QR code to complete the survey-

https://forms.office.com/Pages/ResponsePage.aspx?id=KTVTy09n106NoplvWJ6pS061Url-OD5OrBsL_JVJAmVUQjVQNUhNVVVOM0xTOURQSzg1N000OEQzNS4u

Please feel free to pass this survey link onto any Carpentry & Joinery colleagues and employers.



Future support

Have you registered your details for specific specialisms support programme?

We are hosting future events to support the delivery network around curriculum planning and assessment.

- Please complete the T Level Provider Pre-Approval Form via [link](#) which is mandatory for all centres delivering T Levels. We only want this completing once by each eligible provider for wave 2.
- Also please complete T level Provider Contact Update Form via [link](#). This is to be used to provide all additional contacts / staff involved with the T Levels.

Unfortunately this invitation is strictly for providers who have been approved to deliver T Levels and associated organisations.

Building Services Engineering for Construction T Level: Core On-site Construction T Level: Core



Building Services Engineering:
9781398332874 // October 2021 // £32.99

On-Site Construction: 9781398332904 //
November 2021 // £32.99



Tackle the Core Components of the new T Levels with these comprehensive textbooks published in association with City & Guilds and EAL.

With topic coverage ranging from the principles of construction science and design to workplace relationship management, the two books will provide complete coverage of the Building Services Engineering and On-site Construction Core Components, and will equip students with the skills they need to shape their careers.

The books will help students to:

- Prepare for their Core exams and the Employer Set Project using tips, assessment practice and model answers
- Apply their knowledge in real-world case studies and discover some of the dilemmas they can expect to face in the workplace
- Understand how to avoid hazards and minimise risk with regular health and safety reminders
- Be ready for the workplace with industry tips
- Develop the functional skills they need to thrive in the industry with English and maths exercises

Questions & Survey time!

please complete our very short survey

Click [HERE](#)

Or Scan the QR code below



Qualification Reforms

Finally, the Dept for Education is in a process of reforming the L3 and below qualification offer. This could seriously affect the curriculum offer you are able to provide in the future.

City & Guilds are currently responding to the L2 and below Call for Evidence consultation to help Government understand what the risks are in the reform process. In this way, we hope to influence the department positively to enable training providers to continue to have the positive impact they do.

If anyone is willing to give us 10/15 minutes time for a phone call in the next 10 days, so we can gain your input and views to support our response, please could you indicate in the chat function.

- ☐ Yes (I would like to support with my views)
- ☐ No, (we are responding directly or are not able to support)





Thank you

