

# T Levels Raising Awareness Webinar

**T-LEVELS**

 Institute for Apprenticeship  
& Technical Education

A City & Guilds Group Collaboration

# Discussion points

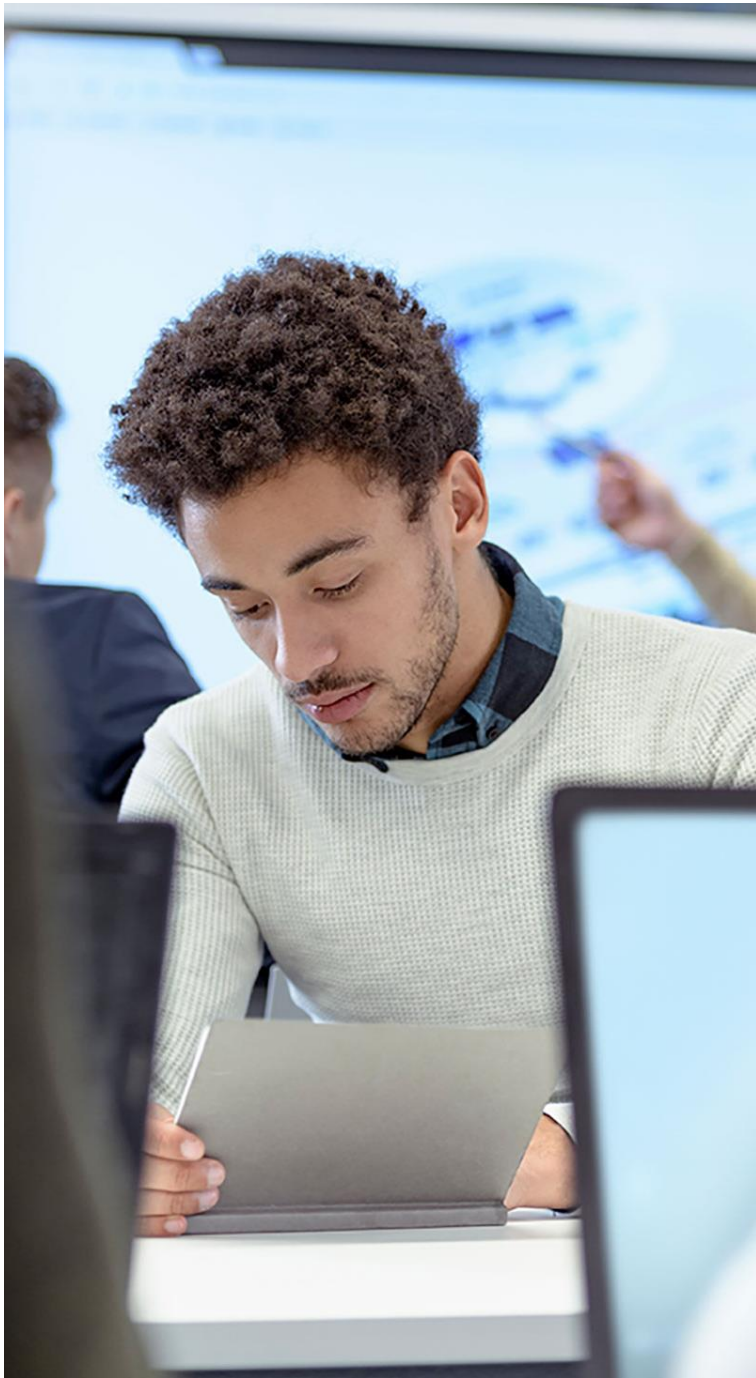
- Background information
- Why we are different
- Post 16 reforms and the impact for providers
- Post 16 choices-how do T Levels compare
- What sectors and routes are T Levels available in- what T Levels do C&G offer
- The structure of a T Level
- How are T Levels funded—how to apply for funding—who, how and when?
- Working with C&G-timelines
- Support and resources
- Other supporting organisations who is responsible for what
- Next steps .....



Alison Whittle  
Post 16 Technical Adviser  
[Alison.Whittle@cityandguilds.com](mailto:Alison.Whittle@cityandguilds.com)



Kerry Dunkley  
Senior Business Development Manager  
[Kerry.dunkley@cityandguilds.com](mailto:Kerry.dunkley@cityandguilds.com)



## Background

T Levels are part of the government's post-16 education reforms, which are designed to drive up skills for 16–19-year-olds and adults. The Department for Education (DfE) has set out clear and simple high-quality options for learners at Level 3.

T Levels are new full-time two-year technical programmes. Their primary purpose is to prepare learners for entry into skilled employment or higher-level technical study.

T Levels will become one of the main choices for learners after GCSE alongside apprenticeships and A levels. They have been developed in collaboration with employers and businesses so that the content meets the needs of the industry.

T Levels offer learners a mixture of classroom learning and 'on-the-job' experience which takes place during an industry placement of at least 315 hours (approximately 45 days).

# Why we're different

①

We are the world's leading skills development organisation with over 140 years' expertise

②

We're the only registered charity and Royal Charter Institute pioneering global skills development

③

We deliver work-based learning programmes that build competency and create flexible pathways that support lifelong employability

④

We invest in social projects to deliver more impact to more people

⑤

We support over five million learners each year to develop their skills

# Post 16 reforms- the impact for providers

## Review of post-16 qualifications at level 3 in England Policy Statement

**The Skills Act** is a set of laws known as the Skills and Post-16 Education Act. It's been debated over the last year in the Houses of Parliament. Now that it's law, it will begin to improve post-16 provision

- Defunding of level 3 qualifications in England started 2020-completed in 2025/2026
- Government wants the mainstream offer for 16 – 18-year-olds to be A Levels, T Levels or apprenticeships
- Some opportunity for smaller OTQ (Other Technical Qualifications) to be combined with A levels but will be the exception.
- Over time this will have a substantial impact on the recruitment of students
- Changes will be very significant in some subject areas especially where there was significant progression to HE
- Move towards an external assessment model
- It is important to note that large academic qualifications will not be funded in subject areas where there is a T Level. (*DfE May 2022*)



# Post 16 choices how do T Levels compare?



## A Levels

- Subject-based qualifications
- Two years at a local college or school



## T Levels

- 2-year technical programmes at local colleges, schools, training providers
- 80% classroom-based
- 20% in a placement

Includes **industry placements** to build attitudes and behaviours and to develop practical skills



## Apprenticeships

- At least 12 months
- work-based training
- 80% on the job
- 20% off the job

Followed by possible progression to:



Higher Education



Skilled Employment



Progression onto an Apprenticeship (inc. Higher/Degree)

# What sectors and routes are T Levels available in-what T Levels do C&G offer ?

Route	Pathway
 <b>Construction</b>	Design, Surveying and Planning for Construction
	Onsite Construction
	Building Services Engineering for Construction
 <b>Education &amp; Childcare</b>	Education and Childcare
 <b>Digital</b>	Digital Production, Design and Development
	Digital Support Services
	Digital Business Services
 <b>Health &amp; Science</b>	Health
	Healthcare Science
	Science
 <b>Legal, Finance &amp; Accounting</b>	Legal
	Finance
	Accounting

Route	Pathway
 <b>Engineering &amp; Manufacturing</b>	Design and Development for Engineering and Manufacturing
	Maintenance, Installation and Repair for Engineering and Manufacturing
	Engineering, Manufacturing, Processing and Control
 <b>Business &amp; Administration</b>	Management and Administration
	Human Resources
 <b>Hair &amp; Beauty</b>	Hair, Beauty and Aesthetics
 <b>Creative &amp; Design</b>	Craft and Design
	Media, Broadcast and Production
 <b>Catering &amp; Hospitality</b>	Catering
 <b>Agriculture, Environmental &amp; Animal Care</b>	Animal Care and Management
	Agriculture, Land Management and Production

\* C&G T Levels shown in red

# The structure of a T Level programme

The T Level is a full-time two-year programme. Achievement of a T Level must include all the components in the boxes below.

UCAS tariff points will be allocated and will be equivalent in value to three A levels. This will be dependent on the overall grade achieved.

## Core

20-50% Total TQ time

**Graded** A\* - E

**Covers concepts and theories including core skills.**

## Occupational specialism

50-80% Total TQ time

**Graded Pass/merit/distinction**

Based on occupational maps

Covers practical skills and knowledge in a specialist occupational area.

## Assessment:

Externally set and marked exams and an employer set project.

## Assessment:

Synoptic assignment covering practical skills and applied knowledge.

## Industry Placement

315-420 hours

Min 45-60 days

## Maths and English

GCSE level 4 or Functional Skills Level 2 study to be continued if learners have not achieved these prior to starting a T Level.

**Tutorial- Employability enrichment and pastoral hours (150 GLH)**



# How are T Levels funded? How to apply for funding – who, how and when?

## Registering providers to deliver T Levels from September 2023

All providers currently funded to offer classroom-based study programmes to 16- to 19-year-olds will be able to deliver some, or all, of the T Levels available from September 2023.

## Registering providers to deliver T Levels from September 2024

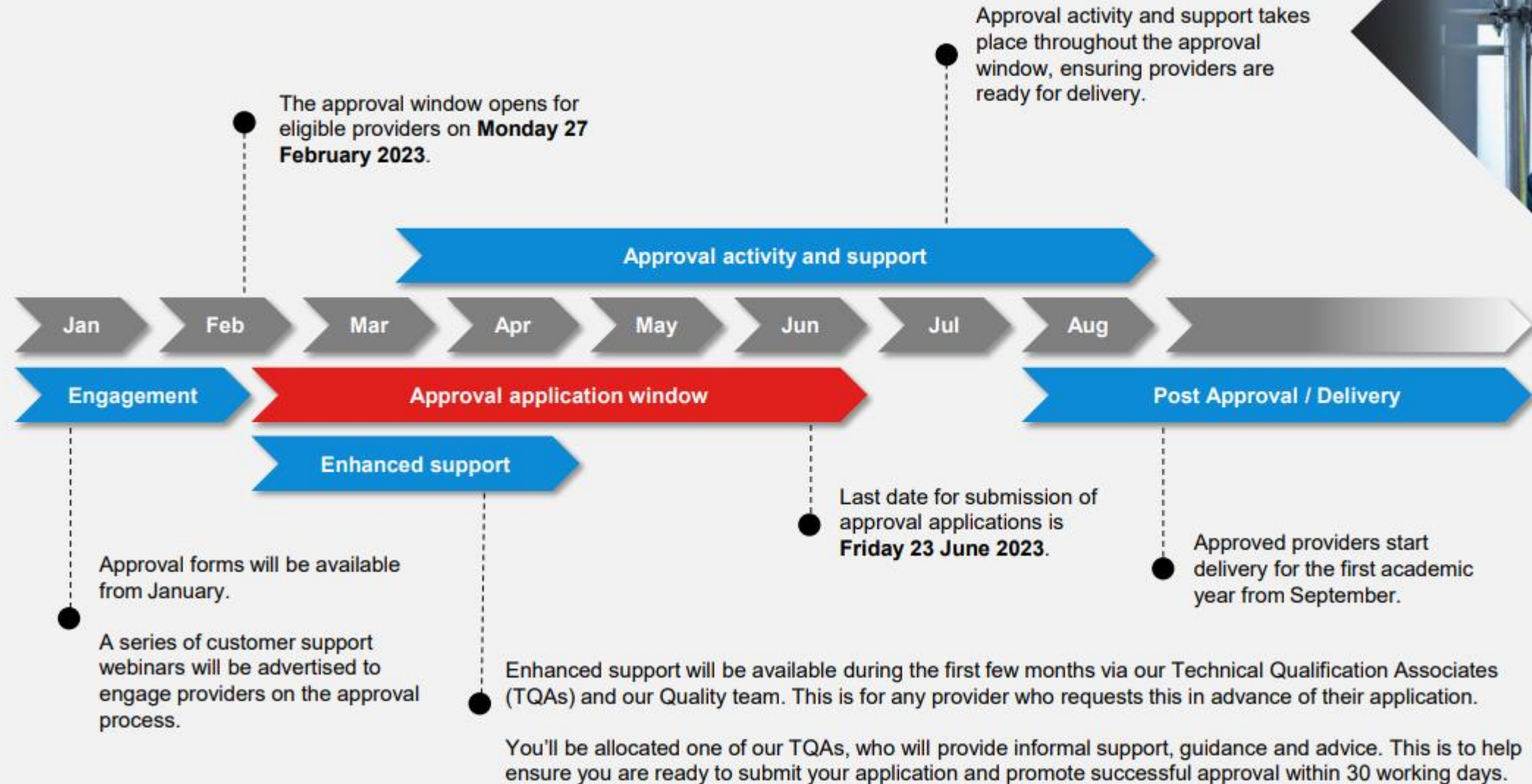
2024 will be the fifth year of T Level roll out, when all T Levels will be available for delivery. All providers currently funded to offer classroom-based study programmes to 16–19-year-olds can [register up to the closing date](#), which is midnight on 24 March 2023.

Table 2 average and minimum hours and funding rate for each band

	average planned hours	minimum planned hours required for the band	funding rate (2 years)
<b>Band 6 - small T Levels</b>	1330 hours	1180 hours	£9,446
<b>Band 7 - medium T Levels</b>	1530 hours	1380 hours	£10,896
<b>Band 8 - large T Levels</b>	1680 hours	1580 hours	£11,982
<b>Band 9 - very large T Levels</b>	1830 hours	1730 hours	£13,068

Links for funding information: [T Level Funding Guide](#) & [Guidance](#)

# Approval timeline



# Support and resources

<https://www.cityandguilds.com/tlevels/resources>

## T Level Website Navigation Video

## Events and webinars - T Levels | City & Guilds (cityandguilds.com)

	Onsite Construction and Building Services Engineering	▼
	Engineering and Manufacturing	▼
	Management and Administration	▼
	Agriculture, Environment and Animal Care	▼

[Home](#) > [T Levels](#) > [Resource Hub](#)

## Resources and support hub

Welcome to the Resource and Support Hub for T Level Technical Qualifications.

Here you'll find a range of teaching, learning and planning resources for tutors as well as information and support regarding approval, quality assurance, registration, bookings, timelines, fees and communications for all staff.

Approval and quality assurance	▼
Specifications and centre documents	▼
Contact update form	▼
Teaching, learning and planning resources	▼
Registration, bookings and results	▼
Fees	▼
Curriculum delivery planners	▼
Tutor resources	▼
Assessment guidance	▼
Post-results services	▼
Communications archive	▼

**T-LEVELS**  
THE NEXT LEVEL QUALIFICATION

### T LEVELS

→ Employers

→ Providers ▼

→ Learners

→ Transition programmes

→ **Resource Hub**

→ Events and webinars

→ Podcasts

→ FAQs

### Contact us

#### Quality team:

E: [Technicals.Quality@cityandguilds.com](mailto:Technicals.Quality@cityandguilds.com)

T: 0300 303 5352

Lines open: Monday to Friday 08.30 to 17.00 GMT

#### Centre Support team:

E: [centresupport@cityandguilds.com](mailto:centresupport@cityandguilds.com)

T: 01924 930 800

Lines open: Monday to Friday 08.00 to 18.00 GMT

# Sample timeline of support for pre-delivery providers

Rectangular Snip

## Pre-delivery providers: Annual calendar 2022/23

T Level Technical Qualification in Business and Administration

**T-LEVELS**



Institute for Apprenticeships  
& Technical Education

■ Key dates ■ Events

- Management and Administration (8715)

September '22	October '22	November '22	December '22	January '23	February '23
<b>September</b> ■ 12-month countdown to first teaching (2023) begins  <b>September</b> ■ HEI guide and learner flyer published on the website	<b>October</b> ■ Quarterly e-bulletin published  <b>19th</b> ■ Network webinar (recorded) Introduction to T Levels	<b>14th</b> ■ Network webinar (recorded) T Level familiarisation: high level overview of TQ	<b>December*</b> ■ Network webinar (recorded) Approvals support  *Date TBC	<b>January</b> ■ Quarterly e-bulletin published  <b>9th</b> ■ Network webinar (recorded) Occupational specialisms & assessments	<b>8th</b> ■ Network event Centre support via MS Teams "Ask the Expert"
March '23	April '23	May '23	June '23	July '23	August '23
<b>8th</b> ■ Network event Centre support via MS Teams "Ask the Expert"	<b>April</b> ■ Quarterly e-bulletin published  <b>25th*</b> ■ Regional network events Planning for delivery and resources to support you *Location TBC	<b>9th*</b> ■ Regional network event Planning for delivery and resources to support you *Location TBC  <b>15th</b> ■ Network event Centre support via MS Teams "Ask the Expert"	<b>June</b> ■ Exam timetable and key dates schedules published  <b>6th*</b> ■ Regional network event Planning for delivery and resources to support you *Location TBC  <b>27th</b> ■ Network event Centre support via MS Teams "Ask the Expert"	<b>July</b> ■ Quarterly e-bulletin published  <b>10th</b> ■ Network event Centre support via MS Teams "Ask the Expert"	<b>22nd</b> ■ Network event Centre support via MS Teams "Ask the Expert"



# ARE YOU T LEVEL READY?

INTRODUCING THE T LEVEL  
PROFESSIONAL DEVELOPMENT  
OFFER

[WWW.ETFFOUNDATION.CO.UK/TLEVELS](http://WWW.ETFFOUNDATION.CO.UK/TLEVELS)

FUNDED BY  
  
Department  
for Education

Play (k)



## Other supporting organisations

### Education and Training Foundation (ETF)

Explore the fully-funded TLPD support from the ETF using the links below, [download our TLPD brochure](#), or [get in touch](#) if you have any questions or to find out more.

[et-foundation.co.uk/professional-development/t-levels/](http://et-foundation.co.uk/professional-development/t-levels/)

<https://youtu.be/N-hRjwXN2Jc>

### Institute for Apprenticeships and Technical Education (IfATE)

IfATE's role: They are responsible for the technical qualification (TQ). This is the main, classroom-based element of the T Level. It equips students with the skills and knowledge necessary to give them a broad understanding of their chosen occupational route.

### The Department for Education (DfE)

Industry placements are run by the DfE. Find out more [here](#).

### Education and Skills Funding Agency (ESFA)

Relationships with providers (schools, colleges etc.) sits with the Education and Skills and Funding (ESFA) and DfE. Find out more [here](#).

### Ofqual

Accreditation and regulation of the qualification sit with Ofqual. Find out more [here](#).

## Next steps .....

Sign up for the latest information on T Levels

[Complete centre contact form here](#)

To contact a Technical Adviser for information on T Level content

[Technical Advisers](#)

For information on how to register for T Levels

E: [Technical.Quality@cityandguilds.com](mailto:Technical.Quality@cityandguilds.com)

T: 0300 303 5352

Lines open: Monday to Friday 08.30 to 17.00 GM



**T-LEVELS**



Institute for Apprenticeships  
& Technical Education

# T-LEVELS

## Thank you

December 2022

'T LEVELS' is a registered trademark of the Department for Education.  
'T Level' is a registered trademark of the Institute for Apprenticeships  
and Technical Education.

City & Guilds

ilm