

e-volve Centre Guide

SecureClient Installation and Troubleshooting

Version 1.0

Last modified 21-January-2026

For external use



Document revision history

Version	Changed by	Summary of change	Approval date
1.0	Hazel Bryce	New template and updated requirements and error codes	21.01.2026
[00]	[Department name]	[Description]	[day Month year]

Contents

1. Minimum Technical Requirements	3
2. SecureClient Installation	4
3. SecureClient Troubleshooting	7
3.1. Grammarly: Error 8054	7
3.2. Windows Text Suggestions: Error 8053	7
3.3. Runtime error in setup script	8
3.4. SecureClient update loop	8
3.5. Unhandled Exception	8
3.6. SecureClient fails to open	8
3.7. Error validating keycode: Error 827	9
4. SecureClient Best Practice	11

1. Minimum Technical Requirements

NOTE: Before installing the SecureClient, please ensure your machines meet the requirements below

SecureClient for Windows

IMPORTANT: SecureClient for Windows may not start if Microsoft Office apps are already open on the device. Microsoft Office apps (Word, Excel, Outlook, PowerPoint, and Access) should be closed before opening SecureClient.

Additional Apps	Tests may contain media or attached files like text documents, PDFs, spreadsheets, audio, and video that require external apps to open these files.
Disk Space	1 GB
Graphics Memory	64 MB NOTE: Some tests with legacy content or large attachments may require up to 2 GB of graphics memory.
Internet Speed	A centre connection of 2 Mbps or greater for every 30 candidate tests being sat at the same time. TIP: Download tests in advance if you do not want candidates to have to wait for their tests to download at the start of the session. IMPORTANT: 3G network cards may not guarantee a constant bandwidth and might not meet the minimum requirements.
Microsoft .NET Framework	4.7.2
Operating System	<ul style="list-style-type: none">• Windows 10*• Windows 11 WARNING: Microsoft no longer supports Windows 10 unless you have signed up to their ESU program. Surpass will continue to support until the ESU program ends. Further details can be found here
Peripherals	Two-button mouse and keyboard.
Processor Speed	1.80 GHz
RAM	4 GB
Redistributable Package (Visual C++)	X86 (downloadable from here) NOTE: The SecureClient will fail to open or will close after checking for updates if this file is missing, go to the <i>SecureClient</i> troubleshooting section for more information.
Screen Resolution	1024 x 768 pixels. SecureClient should only be run on devices with a single screen. TIP: Some features (for example, side-by-side viewing of source material) require 1920 x 1080 pixel screen resolutions. NOTE: Larger screens may need their display settings reducing to 1920 x 1080 pixels to improve usability

2. SecureClient Installation

NOTE: You need to be logged into the machine with an account that has full admin rights or you will encounter a Runtime error when launching the SecureClient.

Before you begin:

Ensure your machines meet the minimum technical requirements detailed above

If you have saved an older version of the MSI, delete it and download the latest installer

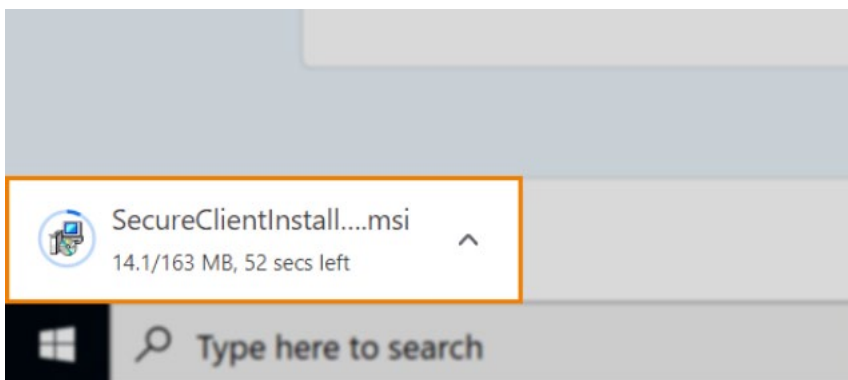
If you have an older version of the SecureClient installed, uninstall it fully and delete any folders left behind

You can download the latest MSI from the homepage of evolve SecureAssess administration site or download it directly from [here](#)

NOTE: If you use SecureClient with other awarding organisations, you must download the City and Guilds MSI from either of the above locations, this is the **ONLY** version that we authorise the use of.

1. Open the SecureClient installer

Open the SecureClient installer from your device.

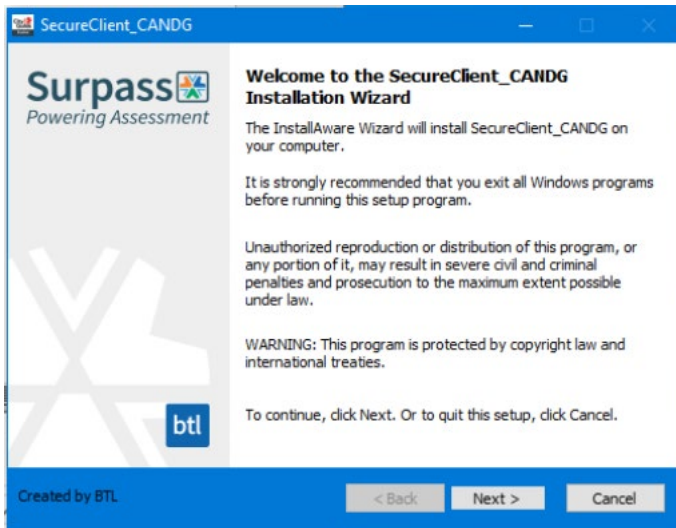


NOTE: You may need to allow SecureClient to make changes to your device before you can start the installation.

Depending on your device, the set-up screens may differ slightly, follow the instructions and select Next/OK where applicable

3. Start the installation

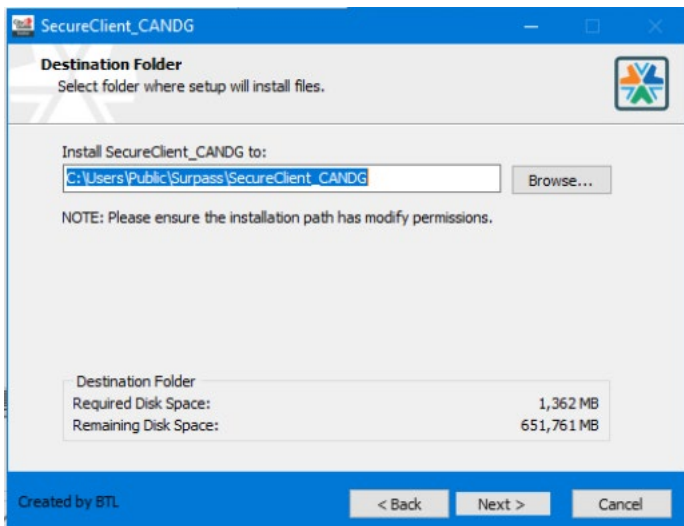
Start the installation in the **SecureClient Installation Wizard**.



Select **Next** to continue.

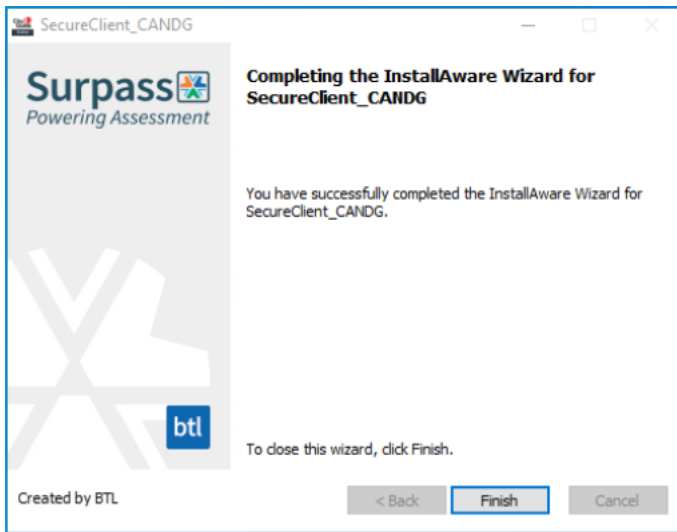
4. Choose an installation path

NOTE: The default installation path is the **C:** drive. Please ensure the path has Modify permissions



Select **Next** to install SecureClient on your device.

5. Complete installation



Select **Finish** to complete the SecureClient installation.

6. Open the SecureClient app

You can launch SecureClient from your desktop when the installation is complete.



NOTE: After a new installation or upgrade, all machines should be tested before being used for a test session. Navigation tests can be booked free of charge in Walled Garden: 9898 -111

3. SecureClient Troubleshooting

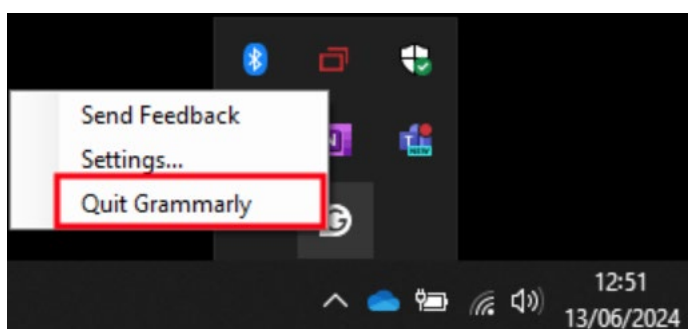
From version 24.2 onwards, a new feature has been introduced to the SecureClient that will prevent it from being launched with certain AI or assistive programs running in the background. The two most common are Grammarly and Windows Text suggestions.

3.1. Grammarly: Error 8054

Error 8054: Unable to Launch SecureClient (Open Applications)

This message will display if Grammarly (or other similar assistive Apps) for Windows are installed and active.

You can quit the application from the Task Manager or the icon in the taskbar and then relaunch the SecureClient



Additionally, you can prevent Grammarly from launching at start up via the settings menu so you don't have to repeat this step each time you test.

3.2. Windows Text Suggestions: Error 8053

Error 8053: Unable to Launch SecureClient (Windows Text Suggestions)

This message will display if Windows Text Suggestions are enabled.

Ensure these settings are all disabled ahead of time on any machine being used for a test session.

Windows 10: Settings > Devices > Typing

Windows 11: Settings > Time & language > Typing

NOTE: If using Group Policies to control these settings, please share this document with your IT support team, as they will be able to make the required changes across your network.

3.3. Runtime error in setup script

The installation requires elevated permissions, log into the machine with an account that has administrator permissions and rerun the installer.

3.4. SecureClient update loop

If you receive the update check repeatedly, the client may be stuck in an update loop.

You will need to grant read/write permissions to the SecureClient folder or as a temporary fix, right click the SecureClient icon and select 'Open File Location'. Navigate to the file 'SecureClientInitialRun', right click and select Run as Administrator.

NOTE: If the above fails, your version of SecureClient may be more than two versions behind and you will need to reinstall it using the latest MSI file

3.5. Unhandled Exception

An unhandled exception error may occur after SecureClient is launched if there were any issues during installation or if you are using an old saved MSI.

Close SecureClient, uninstall it, and reinstall it from an account with administrator permissions.

3.6. SecureClient fails to open

If the SecureClient fails to open or closes after checking for updates, this is caused by the Microsoft Visual C++ x86 redistributable package being absent from SecureClient config files.

Follow these steps to check the log file:

Navigate to the installation folder
(C:\Users\Public\Surpass\SecureClient_CANDG\configfiles).

Open the Log XML file using Notepad or similar program.

Check for the following line in the document: MainError: Could not load file or assembly 'CefSharp.Core.Runtime.dll' or one of its dependencies. The specified module could not be found.

[Download Microsoft Visual C++ X86](#) and follow the steps to install

Relaunch the SecureClient

3.7. Error validating keycode: Error 827

When a candidate enters a keycode for an online test, they may encounter an error:

Error: 827 Secure Client Core – OFFLINE – There was an error validating the keycode

This means SecureClient is being forced into an offline state where it cannot communicate with the database and validate the keycode.

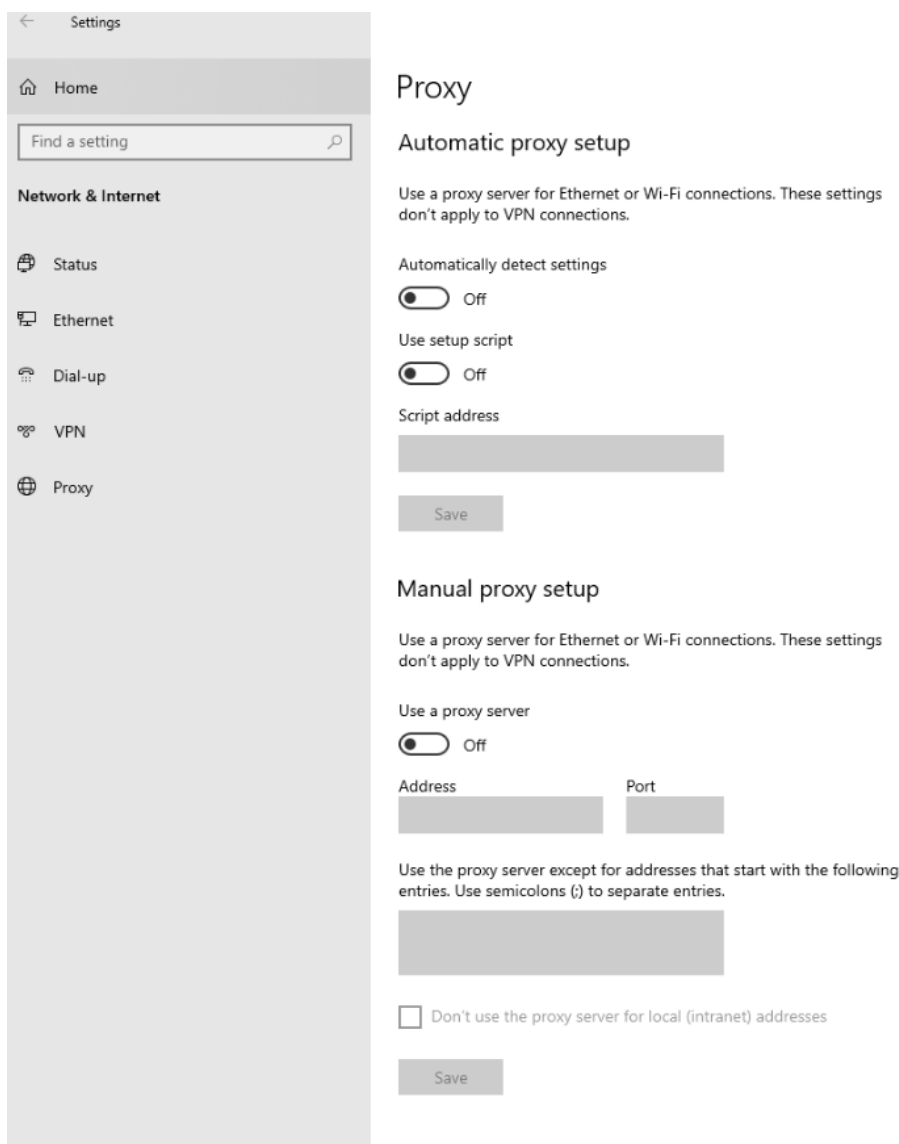
How to fix an Error: 827

To resolve this issue, try the steps below.

Check that the keycode has been written correctly.

Check the proxy configuration

To check if your LAN connections go through the proxy server, open Windows 10 settings and search 'proxy' in the search bar.



If the toggle buttons are set to **On**, the network goes through the proxy server. This may prevent SecureClient from accessing Surpass and allowing the test to start. To resolve this, set the toggle buttons to **Off**.

Authenticate the proxy server

To authenticate the proxy server, first enter your details into the proxy.XML file. This can be found in (C:\Users\Public\Surpass\SecureClient_CANDG\configfiles).

If your proxy server requires authentication, enter the username between **<user></user>** and the password between **<password></password>**.

If you are not sure which proxy settings to use, you can check the settings by searching for 'proxy' in the search bar.

Check the folder permissions

To check the folder permissions for SecureClient, follow these steps:

Select **Open file location** on your local shortcut for SecureClient.

Select the folder prior to the one you are directed to.

Select the SecureClient folder.

Select **Properties**.

Select **Security**.

Select **Advanced**.

Tick the checkbox labelled **Replace all child object permission entries with inheritable permission entries from this object**.

If the steps above are still not working, log in as an administrator.

TIP: You could add the 'Everyone' group in here and grant 'Full control'. This would mean all users would have access to Read/Write and run executables in this folder.

4. SecureClient Best Practice

Upgrades: The SecureClient is upgraded 3-4 times per year and will only update correctly from a minimum of **two** versions behind, if you do not test regularly then you should either launch the SecureClient periodically to pull down any new updates or uninstall and install the latest version before the test session. You do not need to be logged in with admin rights for the SecureClient to update but you would need to be for a new installation.

MSI: Do not store the MSI for a long period of time, the latest version is always available from the homepage of the e-volve [SecureAssess](#) administration site or you can save [this link](#) and download it directly. This is the ONLY authorised version.

Antivirus: If you are experiencing general test performance issues, particularly concerning files being opened during a test (for example, opening a PDF file) or freezing between questions, this may be due to interference from antivirus software installed on your device. The installation folder should be added to the exclusion list.

General

As all centres security estates are configured differently you may encounter errors not listed above, please check the following:

Check all firewalls and proxy settings are set up correctly to allow the Secure Client to run.

Check that ASMX and ASP file types are allowed to run.

Assign full read/write permissions to the root directory on the machine, not at user level. The default installation path is: C:\Users\Public\Surpass.

The below URLs could also require whitelisting:

<https://evolveassessmentdh.cityandguilds.com>

<https://evolvedeliverydh.cityandguilds.com>

<https://evolvecdndh.cityandguilds.com>

<https://cms.surpass.com/>

<https://cmspublic.surpass.com/>

<https://evolve.cityandguilds.com>

Contact us

Giltspur House
5-6 Giltspur Street
London EC1A 9DE

customersupport@cityandguilds.com

+44 (0) 1924 930 800

cityandguilds.com

About City & Guilds

City & Guilds is the global skills partner, empowering people, organisations and economies to develop the skills they need for growth. With almost 150 years of trusted expertise, we support people into work, help them develop on the job and move into the next job.

We work with Governments, employers, training providers, colleges and industry stakeholders to design and deliver high-quality training, qualifications, assessments and credentials that lead to meaningful career progression. We understand the life changing link between skills development, social mobility and success. Our solutions span critical sectors including construction, engineering, transport, energy and electrical, serving over 1 million learners annually.

Through our comprehensive portfolio of brands and trusted global network, we set industry-wide standards for technical, behavioural and commercial skills to improve performance and productivity. We believe you can achieve your potential - and we're here to help make it happen.

Every effort has been made to ensure that the information contained in this publication is true and correct at time of publication. However, City & Guilds products and services are subject to continuous development and improvement, and the right is reserved to change products and services from time to time. City & Guilds cannot accept responsibility for any loss or damage arising from the use of information in this publication.

©2025 City & Guilds Limited (Reg No 16513878). All rights reserved. City & Guilds is a trademark of City & Guilds Limited.