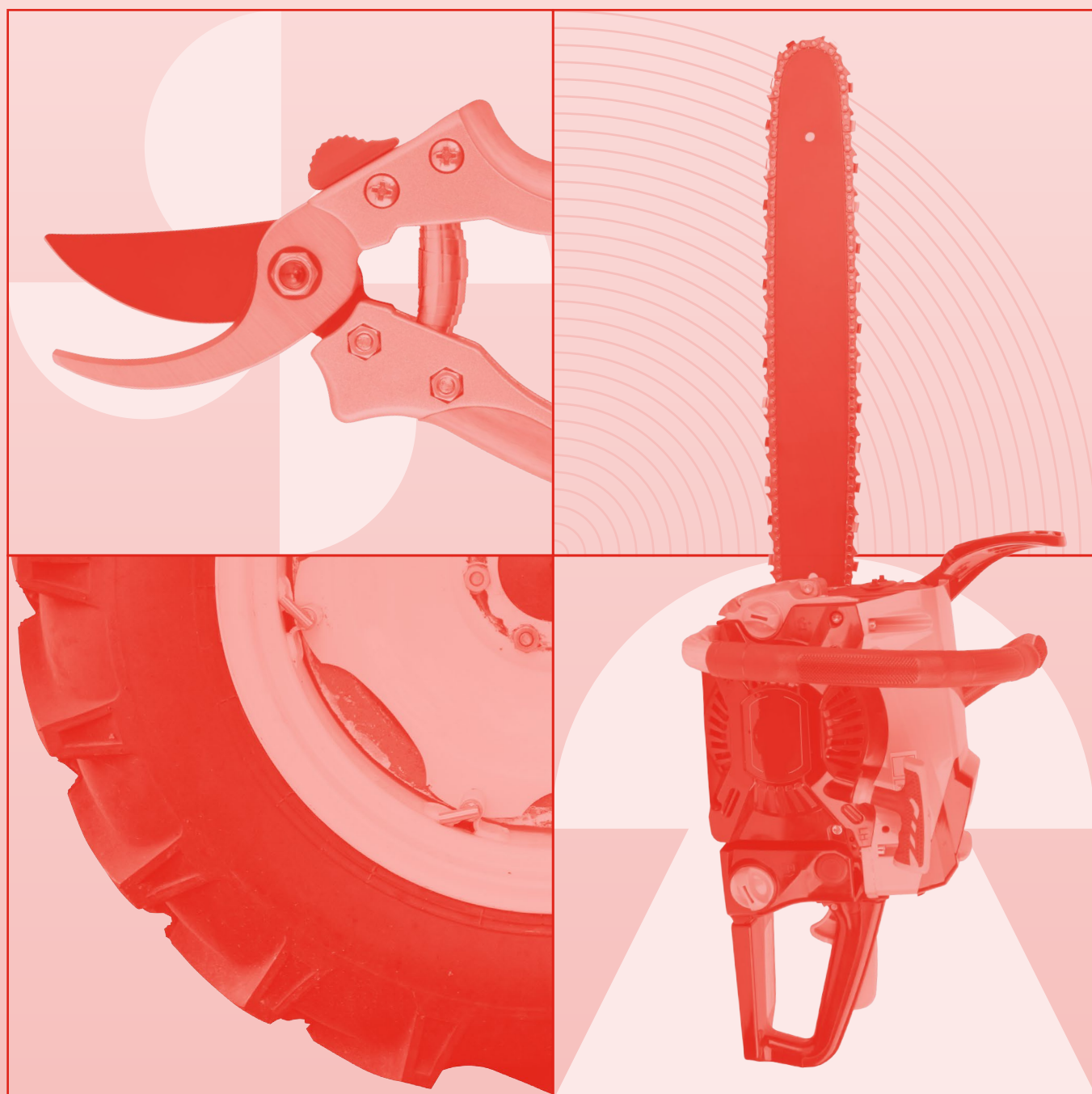


Cultivating future skills

A guide to our Land-based qualifications, Continuing Professional Development (CPD) and Certificates of Competence (CoCs)





Contents

| | |
|--|-----------|
| Introduction | 3 |
| Land-based sector snapshot | 4 |
| City & Guilds Land-based qualifications | 5 |
| T Levels | 5 |
| Agriculture | 7 |
| Animal Care and Management | 9 |
| Equine Care and Management | 11 |
| Floristry | 13 |
| Forestry and Arboriculture | 14 |
| Horticulture | 15 |
| Land, Countryside and Wildlife | 17 |
| Land-based Engineering | 19 |
| Entry Level and Level 1 Land-based | 20 |
| NPTC by City & Guilds Land-based Certificates of Competence | 21 |
| Chainsaw and Related Operations | 21 |
| Forestry and Arboriculture | 23 |
| Health & Safety | 25 |
| Livestock | 26 |
| Land-based Machinery | 27 |
| Pesticides and Pest Control | 29 |
| Thorough Examination of Arboriculture Equipment Utility Arboriculture | 31 |
| Utility Arboriculture | 32 |
| NPTC Land-based CPD and Refreshers | 33 |
| Chainsaw and Related Operations | 33 |
| Utility Arboriculture | 35 |
| Pesticides Application | 36 |
| More skills solutions for your learners | 37 |
| Why work with City & Guilds | 39 |

Introduction

The Land-based sector is a vital part of the UK's economy and environmental future, supporting food production, natural resource management, and sustainability. As the sector responds to climate change, technological advancement, and evolving environmental priorities, the demand for skilled Land-based professionals has never been greater.

At City & Guilds, we are committed to supporting the growth of this diverse and essential sector through a comprehensive portfolio of Land-based qualifications. From agriculture, horticulture, and forestry to animal and wildlife management, our programmes are designed to reflect real-world practice and meet the needs of the sector today and in the future.

Offering qualifications from Entry Level to Level 3, alongside industry-recognised CoCs, licence-to-practise awards, and CPD/ refreshers, our programmes support a wide range of career pathways and skill levels. By choosing City & Guilds, you and your learners benefit from:

- A comprehensive range of Land-based qualifications from Entry Level to Level 3
- Industry-recognised CoCs, including licence-to-practise and CPD/ refreshers
- Support from our team of industry and technical experts
- Guidance on qualification planning, delivery, and quality assurance

Deeply rooted in the sector, City & Guilds works with employers, industry bodies, and experts to ensure qualifications meet current standards and reflect real-world practice. From Entry Level to Level 3, our support learners at every stage of their journey, helping them build skills and confidence that lasts a lifetime.



Land-based sector snapshot

With over 150 years of heritage and the combined strength of City & Guilds and NPTC, we offer unmatched reach and expertise in Land-based learning.

Our unified offer provides clear progression from entry to advanced roles, with aligned qualifications, CoCs, and CPD, empowering providers to build holistic programmes and helping learners stay connected to their development throughout their careers.



City & Guilds Qualifications

We offer a varied portfolio of qualifications from Entry Level to Level 3, including T Levels in the key Land-based sub-sectors, with programmes designed to meet the needs of both aspiring and existing professionals.

NPTC by City & Guilds Certificates of Competence (CoC)

A CoC is a short course that recognises a specific range of knowledge and skills, culminating in a certificated qualification. Some of our qualifications are specified as a legal requirement for certain industries and are recognised as a licence-to-practise.

NPTC by City & Guilds CPD

Our range of CPD and refreshers enables learners of all ages and stages to upskill or reskill in specific areas that add value to their careers.

Sustainability Qualifications

To develop or improve their knowledge and understanding of Sustainability and the Green Environment in a range of industries and sectors.

Mental Wellness

We offer a qualification supporting mental wellness, helping learners build self-awareness, resilience and stress management skills. These skills enable them to maintain their own health, support others and build confidence.

Assured

Assured is our in-house training accreditation service, designed to support training success and achieve business goals.

Skills for work and life

We provide essential foundations for employment and learning including maths, English, digital skills, ESOL and employability training. Designed for learners of all ages and abilities it supports entry into sustainable work, career progression and lifelong learning with a hub or course, resources and events.

Leadership and Management

Through ILMs globally recognised qualifications we help support and grow leadership capabilities. From supervision to strategic leadership, these programmes provide frameworks, skills and to enhance performance and deliver lasting professional impact.



City & Guilds Land-based qualifications

Explore our comprehensive range of Land-based courses and programmes.

T Levels

T Levels help young people in England aged 16 to 19 gain a solid start in industry. Learners combine classroom study with a 45-day work placement. Fully funded and mapped to apprenticeship standards, these two-year programmes award UCAS points and support progression to university, employment or apprenticeships.

Qualifications

| Qualification | Accreditation number | Guided learning hours (GLH) | Available for delivery in |
|--|----------------------|-----------------------------|---------------------------|
| T Level in Agriculture, Land Management and Production (ALMP) (8717-31, -32, -33, -34, -40, -41, -42, -43, -44, -45, 46) | 610/2933/6 | 1320 | England |
| Core: ALMP: Woodland and Horticulture (8717-31) | | | |
| Core: ALMP: Land-based Engineering (8717-32) | | | |
| Core: ALMP: Livestock (8717-33) | | | |
| Core: ALMP: Floristry (8717-34) | | | |
| Occupational Specialism: Crop Production (8717-40) | | | |
| Occupational Specialism: Floristry (8717-41) | | | |
| Occupational Specialism: Land-based Engineering (8717-42) | | | |
| Occupational Specialism: Livestock Production (8717-43) | | | |
| Occupational Specialism: Ornamental and Environmental Horticulture and Landscaping (8717-44) | | | |
| Occupational Specialism: Trees and Woodland Management and Maintenance (Arboriculture) (8717-45) | | | |
| Occupational Specialism: Trees and Woodland Management and Maintenance (Forestry) (8717-46) | | | |



| Qualification | Accreditation number | Guided learning hours (GLH) | Available for delivery in |
|--|----------------------|-----------------------------|---------------------------|
| T Level Animal Care and Management (ACM) (8717-35, -36, -47, -48) | 610/4158/0 | 1340 | England |
| Core: ACM: Animal Management (8717-35) | | | |
| Core: ACM: Animal Science (8717-36) | | | |
| Occupational Specialism: Animal Management and Behaviour (8717-47) | | | |
| Occupational Specialism: Animal Management and Science (8717-48) | | | |

[Find out more about our T Levels](#)





Agriculture

Agriculture is more than growing crops and livestock - it's about shaping the future of food, sustainability, and innovation. From basic farming principles and practices to advanced agricultural technologies, our qualification offer has everything to enable learners to meet industry standards and prepare for the evolving demands of the sector.

Qualifications

| Qualification | Accreditation number | Guided learning hours (GLH) | Available for delivery in |
|---|----------------------|-----------------------------|---|
| Level 2 Diploma in Work-based Agriculture (0066-73) | 601/2653/X | 252 | England, NI, Wales, Scotland, and International |
| Level 3 Diploma in Work-based Agriculture (0066-83) | 500/6224/4 | 349 | England, NI, Wales, Scotland |
| Level 1 Award in Work-based Land-based Operations (0072-11) | 500/6712/6 | 90 | England, NI, Wales, Scotland |
| Level 1 Certificate in Work-based Land-based Operations (0072-11) | 500/6660/2 | 188 | England, NI, Wales, Scotland |
| Level 1 Diploma in Work-based Land-based Operations (0072-11) | 500/6711/4 | 333 | England, NI, Wales, Scotland |
| Level 2 Diploma in Agriculture (0073-02) | 500/8575/X | 360 | England, NI, Wales, Scotland |
| Level 2 Extended Certificate in Agriculture (0073-02) | 500/8590/6 | 180 | England, NI, Wales, Scotland |
| Level 3 Certificate in Agriculture (0073-03) | 500/8488/4 | 180 | England, NI, Wales, Scotland |
| Level 3 Diploma in Agriculture (0073-03) | 500/8487/2 | 720 | England, NI, Wales, Scotland |
| Level 3 Extended Diploma in Agriculture (0073-03) | 500/8490/2 | 1080 | England, NI, Wales, Scotland |
| Level 3 Subsidiary Diploma in Agriculture (0073-03) | 500/8388/0 | 360 | England, NI, Wales, Scotland |
| Level 3 90-Credit Diploma in Agriculture (0073-03) | 600/6048/7 | 540 | England, NI, Wales, Scotland |
| Level 2 Technical Certificate in Agriculture (0171-20) | 603/0067/X | 360 | England, NI, Wales, Scotland |
| Level 3 Advanced Technical Diploma in Agriculture (540) (0171-31, -80) | 601/7452/3 | 540 | England, NI, Wales, Scotland |



| Qualification | Accreditation number | Guided learning hours (GLH) | Available for delivery in |
|---|----------------------|-----------------------------|------------------------------|
| Level 3 Advanced Technical Extended Diploma in Agriculture (1080) (0171-33, -81) | 601/7459/6 | 1080 | England, NI, Wales, Scotland |
| Level 2 KS4 Technical Award in Land Based Studies (0170-24) | 610/0652/X | 120 | England |

[View our agriculture qualifications on our website](#)



Animal Care and Management

Animal studies qualifications support the delivery of learning that combines technical knowledge with practical, welfare-led skills. They equip learners with a strong understanding of animal care, behaviour and ethical management, aligned to current industry expectations. Covering areas from domestic animal care to wildlife and conservation contexts, these qualifications support progression into roles such as animal management, veterinary support and dog grooming. With growing demand across the sector, they enable providers to offer programmes that respond to workforce needs while promoting sustainable and responsible practice.

Qualifications

| Qualification | Accreditation number | Guided learning hours (GLH) | Available for delivery in |
|--|----------------------|-----------------------------|------------------------------|
| Level 1 Award in Work-based Animal Care (0067-11) | 500/6643/2 | 90 | England, NI, Wales, Scotland |
| Level 1 Certificate in Work-based Animal Care (0067-11) | 500/7273/0 | 162 | England, NI, Wales, Scotland |
| Level 1 Diploma in Work-based Animal Care (0067-11) | 500/6710/2 | 342 | England, NI, Wales, Scotland |
| Level 2 Award in Work-based Animal Care (0067-21,-22,-23,-24,-25,-26) | 500/7470/2 | 72 | England, NI, Wales, Scotland |
| Level 2 Certificate in Work-based Animal Care (0067-21,-22,-23,-24,-25,-26) | 500/7469/6 | 158 | England, NI, Wales, Scotland |
| Level 2 Diploma in Work-based Animal Care (0067-21,-22,-23,-24,-25,-26) | 500/6818/0 | 309 | England, NI, Wales, Scotland |
| Level 3 Certificate in Work-based Animal Care (0067-31, -32,-33, -34, -35, -36, 37, -38) | 500/7471/4 | 151 | England, NI, Wales, Scotland |
| Level 3 Diploma in Work-based Animal Care (0067-31, -32, -33, -34, -35, 36, -37, -38, 39) | 500/6815/5 | 346 | England, NI, Wales, Scotland |
| Level 2 Certificate in Animal Care (0074-02) | 500/8281/4 | 90 | England, NI, Wales, Scotland |
| Level 2 Diploma in Animal Care (0074-02) | 500/8356/9 | 360 | England, NI, Wales, Scotland |
| Level 2 Extended Certificate in Animal Care (0074-02) | 500/8355/7 | 180 | England, NI, Wales, Scotland |
| Level 3 Certificate in Animal Management (0074-03) | 500/8320/X | 180 | England, NI, Wales, Scotland |
| Level 3 Diploma in Animal Management (0074-03) | 500/8321/1 | 720 | England, NI, Wales, Scotland |
| Level 3 Extended Diploma in Animal Management (0074-03) | 500/8280/2 | 1080 | England, NI, Wales, Scotland |
| Level 3 Subsidiary Diploma in Animal Management (0074-03) | 500/8279/6 | 360 | England, NI, Wales, Scotland |



| Qualification | Accreditation number | Guided learning hours (GLH) | Available for delivery in |
|---|----------------------|-----------------------------|------------------------------|
| Level 3 90-Credit Diploma in Animal Management (0074-03) | 600/6112/1 | 540 | England, NI, Wales, Scotland |
| Level 2 Certificate of Technical Competence in Dog Walking (0146-21) | 603/0792/4 | 14 | England, Wales, NI, Scotland |
| Level 2 Certificate of Technical Competence in Animal Health, Husbandry and Handling (0146-22) | 603/0793/6 | 14 | England, Wales, NI, Scotland |
| Level 3 Certificate in Inspecting Licensable Activities Involving Animals (0169-03) | 603/6590/0 | 38 | England, Wales, NI, Scotland |
| Level 2 Technical Certificate in Animal Care (0172-21) | 603/0833/3 | 360 | England, NI, Wales, Scotland |
| Level 3 Advanced Technical Certificate in Animal Management (0172-30) | 601/7518/7 | 360 | England, NI, Wales, Scotland |
| Level 3 Advanced Technical Diploma in Animal Management (540) (0172-31) | 601/7520/5 | 540 | England, NI, Wales, Scotland |
| Level 3 Advanced Technical Extended Diploma in Animal Management (720) (0172-32) | 601/7550/3 | 720 | England, NI, Wales, Scotland |
| Level 3 Advanced Technical Extended Diploma in Animal Management (1080) (0172-33) | 601/7549/7 | 1080 | England, NI, Wales, Scotland |
| Level 2 Diploma for Veterinary Care Assistants (0448-02) | 600/0106/9 | 398 | England, NI, Wales, Scotland |
| Level 2 Certificate for Dog Grooming Assistants (7863-02) | 603/6287/X | 182 | England, Wales, NI, Scotland |
| Level 3 Diploma in Dog Grooming (7863-03) | 603/0353/0 | 300 | England, NI, Wales, Scotland |

[View our animal care and management qualifications on our website](#)



Equine Care and Management

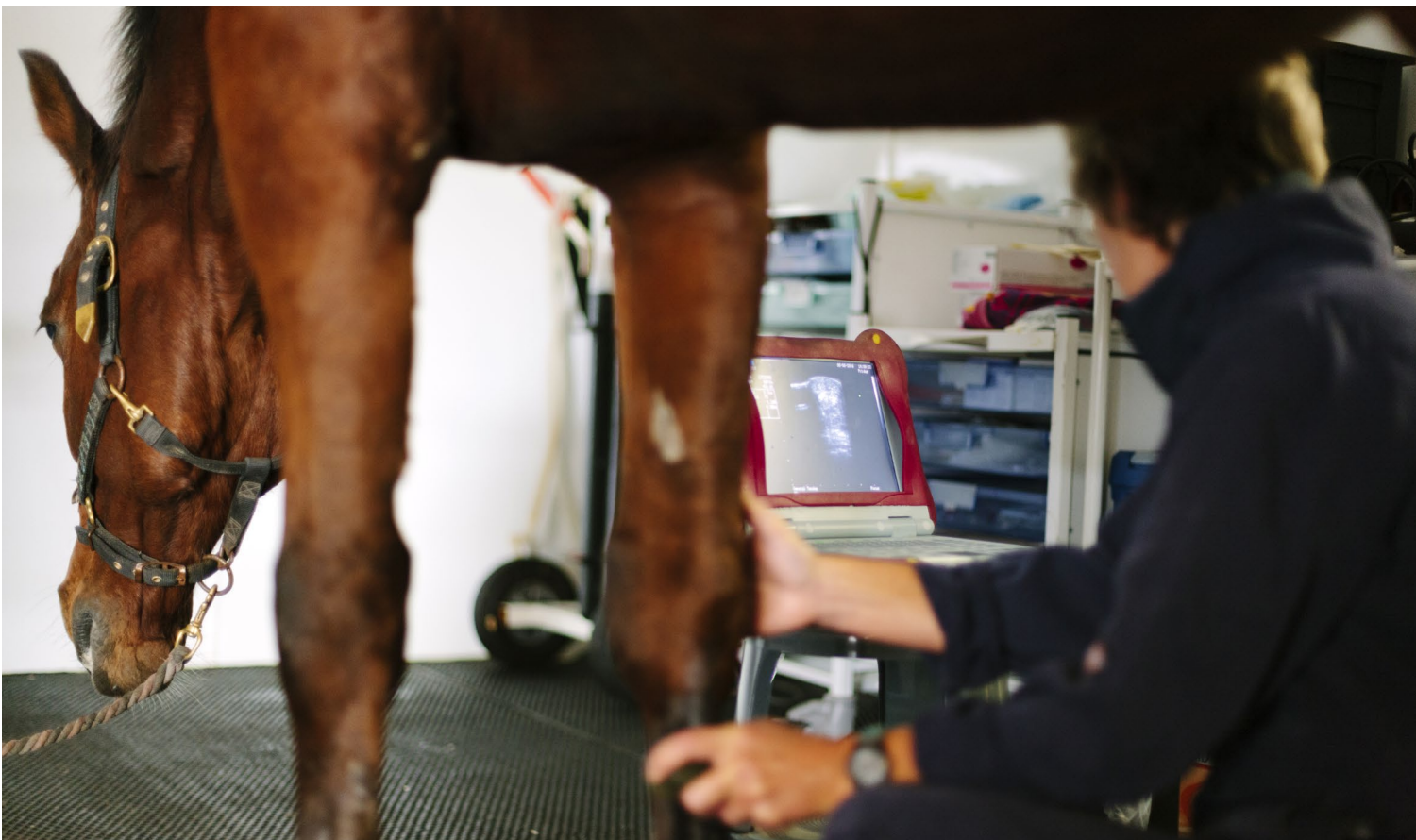
Equine studies qualifications enable providers to deliver training where passion for horses is matched with professional expertise. They develop the skills required to care for and manage horses to high standards, with a strong focus on health, behaviour and welfare. Designed to support both riding and non-riding pathways, these qualifications place practical experience and industry knowledge at their core, helping providers prepare learners for meaningful and sustainable careers across the equestrian sector.

Qualifications

| Qualification | Accreditation number | Guided learning hours (GLH) | Available for delivery in |
|---|----------------------|-----------------------------|------------------------------|
| Level 1 Award in Work-based Horse Care (0071-11) | 501/2283/6 | 90 | England, NI, Wales, Scotland |
| Level 1 Certificate in Work-based Horse Care (0071-11) | 501/2288/5 | 252 | England, NI, Wales, Scotland |
| Level 1 Diploma in Work-based Horse Care (0071-11) | 501/2280/0 | 369 | England, NI, Wales, Scotland |
| Level 1 Diploma in Work-based Horse Care and Riding (0071-11) | 501/2281/2 | 441 | England, NI, Wales, Scotland |
| Level 2 Diploma in Work-based Horse Care (0071-21, -22, 23) | 501/1857/2 | 309 | England, NI, Wales, Scotland |
| Level 3 Diploma in Work-based Horse Care and Management (0071-31, -32, -33, 34) | 501/1885/7 | 442 | England, NI, Wales, Scotland |
| Level 3 Certificate in Horse Management (0079-03) | 500/8565/7 | 180 | England, NI, Wales, Scotland |
| Level 3 Diploma in Horse Management (0079-03) | 500/8709/5 | 720 | England, NI, Wales, Scotland |
| Level 3 Extended Diploma in Horse Management (0079-03) | 500/8708/3 | 1080 | England, NI, Wales, Scotland |
| Level 3 Subsidiary Diploma in Horse Management (0079-03) | 500/8714/9 | 360 | England, NI, Wales, Scotland |
| Level 3 90-Credit Diploma in Horse Management (0079-03) | 600/6114/5 | 540 | England, NI, Wales, Scotland |
| Level 2 Technical Certificate in Equine Care (0172-26) | 603/0834/5 | 360 | England, NI, Wales, Scotland |
| Level 3 Advanced Technical Certificate in Equine Management (0172-35) | 601/7184/4 | 360 | England, NI, Wales, Scotland |
| Level 3 Advanced Technical Diploma in Equine Management (540) (0172-36) | 601/7185/6 | 540 | England, NI, Wales, Scotland |
| Level 3 Advanced Technical Extended Diploma in Equine Management (720) (0172-37) | 601/7186/8 | 720 | England, NI, Wales, Scotland |

| Qualification | Accreditation number | Guided learning hours (GLH) | Available for delivery in |
|--|----------------------|-----------------------------|------------------------------|
| Level 3 Advanced Technical Extended Diploma in Equine Management (1080) (0172-38) | 601/7187/X | 1080 | England, NI, Wales, Scotland |
| Level 2 Certificate in Forgework (8485-02) | 600/5740/3 | 236 | England, NI, Wales, Scotland |
| Level 2 Diploma in Saddlery (0084-21) | 600/0256/6 | 285 | England, NI, Wales, Scotland |
| Level 3 Diploma in Saddlery (0084-31) | 600/0269/4 | 340 | England, NI, Wales, Scotland |
| Level 2 Diploma in Saddle, Harness and Bridle Making (0101-02) | 600/6250/2 | 690 | England, NI, Wales, Scotland |
| Level 3 Diploma in Saddle, Harness and Bridle Making (0101-03) | 600/6252/6 | 654 | England, NI, Wales, Scotland |

[View our equine care and management qualifications on our website](#)





Floristry

Floristry combines creativity with practical skills, teaching learners to design, arrange, and care for flowers while developing techniques used in weddings, events, retail, and bespoke floral work. These qualifications develop both artistic flair and industry knowledge, preparing learners to succeed in a dynamic, visually creative sector.

Qualifications

| Qualification | Accreditation number | Guided learning hours (GLH) | Available for delivery in |
|--|----------------------|-----------------------------|------------------------------|
| Level 2 Diploma in Work-based Floristry (0068-21) | 500/8317/X | 340 | England, NI, Wales, Scotland |
| Level 3 Diploma in Work-based Floristry (0068-31) | 500/9049/5 | 479 | England, NI, Wales, Scotland |
| Level 2 Technical Certificate in Floristry (0175-20) | 603/0839/4 | 360 | England, NI, Wales, Scotland |
| Level 3 Advanced Technical Diploma in Floristry (540) (0175-30) | 601/7444/4 | 540 | England, NI, Wales, Scotland |
| Level 2 Award in Floristry (0351-02) | 500/6358/3 | 70 | England, NI, Wales, Scotland |
| Level 2 Certificate in Floristry (0351-02) | 500/6359/5 | 165 | England, NI, Wales, Scotland |
| Level 2 Diploma in Floristry (0351-02) | 500/6360/1 | 550 | England, NI, Wales, Scotland |

[View our floristry qualifications on our website](#)





Forestry and Arboriculture

Forestry and Arboriculture qualifications offer the chance to work at the heart of nature, managing and protecting some of our most valuable resources - trees and woodlands. These qualifications cover the skills to care for trees, maintain healthy ecosystems, and balance conservation with sustainable practices. From urban tree management to large-scale forestry operations, this area combines practical expertise with environmental responsibility. With growing demand for professionals who can tackle climate change and promote biodiversity, these qualifications open doors to careers that make a lasting impact on both landscapes and communities.

Qualifications

| Qualification | Accreditation number | Guided learning hours (GLH) | Available for delivery in |
|---|----------------------|-----------------------------|------------------------------|
| Level 2 Certificate in Forestry and Arboriculture (0077-02) | 500/8552/9 | 90 | England, NI, Wales, Scotland |
| Level 2 Extended Certificate in Forestry and Arboriculture (0077-02) | 500/8587/6 | 180 | England, NI, Wales, Scotland |
| Level 2 Diploma in Forestry and Arboriculture (0077-02) | 500/8718/6 | 360 | England, NI, Wales, Scotland |
| Level 3 Diploma in Forestry and Arboriculture (0077-03) | 500/8564/5 | 720 | England, NI, Wales, Scotland |
| Level 3 Subsidiary Diploma in Forestry and Arboriculture (0077-03) | 500/8724/1 | 360 | England, NI, Wales, Scotland |
| Level 3 90-Credit Diploma in Forestry and Arboriculture (0077-03) | 600/5946/1 | 540 | England, NI, Wales, Scotland |
| Level 3 Certificate in Forestry and Arboriculture (0077-03) | 500/8719/8 | 180 | England, NI, Wales, Scotland |
| Level 3 Extended Diploma in Forestry and Arboriculture (0077-03) | 500/8720/4 | 1080 | England, NI, Wales, Scotland |
| Level 2 Diploma in Work-based Trees and Timber (0083-71, -72, -73) | 600/7616/1 | 252 | England, NI, Wales, Scotland |
| Level 2 Technical Certificate in Forestry and Arboriculture (0174-21) | 603/1175/7 | 360 | England, NI, Wales, Scotland |
| Level 3 Advanced Technical Extended Diploma in Forestry and Arboriculture (1080) (0174-38) | 601/7517/5 | 1080 | England, NI, Wales, Scotland |

[View our forestry and arboriculture qualifications on our website](#)



Horticulture

Horticulture is the science and art of cultivating plants to create healthier environments and beautiful spaces. Horticulture equips learners with skills and expertise in plant care, soil management, and sustainable growing techniques, while exploring areas like landscaping, garden design, and crop production.

The qualifications cover diverse opportunities from working in parks and gardens to supporting food security and environmental conservation. With a strong focus on practical skills and innovation, horticulture qualifications prepare you for a career that blends creativity, science, and sustainability.

Qualifications

| Qualification | Accreditation number | Guided learning hours (GLH) | Available for delivery in |
|---|----------------------|-----------------------------|------------------------------|
| Level 3 Award in Work-based Horticulture (0065-34) | 500/6838/6 | 59 | England, NI, Wales, Scotland |
| Level 3 Certificate in Work-based Horticulture (Sports Turf - Greenkeeper) (0065-34) | 500/6900/7 | 165 | England, NI, Wales, Scotland |
| Level 3 Diploma in Work-based Horticulture (Sports Turf - Greenkeeper) (0065-34) | 500/6255/4 | 348 | England, NI, Wales, Scotland |
| Level 2 Diploma in Work-based Horticulture (0065-73) | 601/2631/0 | 261 | England, NI, Wales, Scotland |
| Level 3 Diploma in Work-based Horticulture (0065-83) | 500/6255/4 | 348 | England, NI, Wales, Scotland |
| Level 3 Certificate in Horticulture (0078-03) | 500/8402/1 | 180 | England, NI, Wales, Scotland |
| Level 3 Diploma in Horticulture (0078-03) | 500/8384/3 | 720 | England, NI, Wales, Scotland |
| Level 3 Extended Diploma in Horticulture (0078-03) | 500/8401/X | 1080 | England, NI, Wales, Scotland |
| Level 3 Subsidiary Diploma in Horticulture (0078-03) | 500/8385/5 | 360 | England, NI, Wales, Scotland |
| Level 3 90-Credit Diploma in Horticulture (0078-03) | 600/6115/7 | 540 | England, NI, Wales, Scotland |
| Level 2 Technical Certificate in Horticulture (0174-20) | 603/0868/0 | 360 | England, NI, Wales, Scotland |
| Level 3 Advanced Technical Diploma in Horticulture (540) (0174-36) | 601/7456/0 | 540 | England, NI, Wales, Scotland |

| Qualification | Accreditation number | Guided learning hours (GLH) | Available for delivery in |
|---|----------------------|-----------------------------|------------------------------|
| Level 3 Advanced Technical Extended Diploma in Horticulture (1080) (0174-37) | 601/7454/7 | 1080 | England, NI, Wales, Scotland |
| Level 2 Award in Practical Horticulture Skills (7573-02) | 601/1067/3 | 36 | England, NI, Wales, Scotland |
| Level 2 Certificate in Practical Horticulture Skills (7573-02) | 601/1069/7 | 105 | England, NI, Wales, Scotland |
| Level 2 Diploma in Practical Horticulture Skills (7573-02) | 601/1070/3 | 219 | England, NI, Wales, Scotland |
| Level 1 Award in Practical Horticulture Skills (7573-11) | 600/5587/X | 45 | England, NI, Wales, Scotland |
| Level 1 Certificate in Practical Horticulture Skills (7573-11) | 600/5611/3 | 140 | England, NI, Wales, Scotland |
| Level 1 Diploma in Practical Horticulture Skills (7573-11) | 600/5612/5 | 285 | England, NI, Wales, Scotland |

[View our horticulture qualifications on our website](#)





Land and Wildlife

Land, Wildlife and Countryside qualifications develop practical and scientific skills to manage habitats, conserve wildlife, and protect landscapes. Learners explore ecological surveying, habitat restoration, countryside access, and visitor engagement. These qualifications support careers that contribute to sustainability, biodiversity, and the long-term health of the natural environment.

Qualifications

| Qualification | Accreditation number | Guided learning hours (GLH) | Available for delivery in |
|---|----------------------|-----------------------------|------------------------------|
| Level 2 Diploma in Work-based Environmental Conservation (0070-21,-22,-23, -27, -28, -29) | 500/9062/8 | 342 | England, NI, Wales, Scotland |
| Level 2 Award in Business for the Environment and Land-based Sector (0070-25) | 500/9311/3 | 60 | England, NI, Wales, Scotland |
| Level 3 Diploma in Work-based Environmental Conservation (0070- 31, -32,- 33) | 500/9054/9 | 442 | England, NI, Wales, Scotland |
| Level 3 Award in Business Management for the Environment and Land-based Sector (0070-35) | 500/9232/7 | 60 | England, NI, Wales, Scotland |
| Level 3 Certificate in Countryside Management (0076-03) | 500/8559/1 | 180 | England, NI, Wales, Scotland |
| Level 3 90-Credit Diploma in Countryside Management (0076-03) | 600/6113/3 | 540 | England, NI, Wales, Scotland |
| Level 3 Diploma in Countryside Management (0076-03) | 500/8561/X | 720 | England, NI, Wales, Scotland |
| Level 3 Extended Diploma in Countryside Management (0076-03) | 500/8489/6 | 1080 | England, NI, Wales, Scotland |
| Level 3 Subsidiary Diploma in Countryside Management (0076-03) | 500/8560/8 | 360 | England, NI, Wales, Scotland |
| Level 2 Technical Certificate in Land and Wildlife (0173-20) | 603/1198/8 | 360 | England, Wales, NI, Scotland |
| Level 3 Advanced Technical Diploma in Land and Wildlife Management (540) (0173-35) | 601/7558/8 | 540 | England, NI, Wales, Scotland |
| Level 3 Advanced Technical Extended Diploma in Land and Wildlife Management (1080) (0173-37) | 601/7564/3 | 1080 | England, NI, Wales, Scotland |
| Level 2 Award in Sustainability and the Green Environment (7617-02) | 610/1201/4 | 30 | England, NI, Wales, Scotland |
| Level 2 Certificate in Sustainability and the Green Environment (7617-12) | 610/1652/4 | 120 | England, NI, Wales, Scotland |

| Qualification | Accreditation number | Guided learning hours (GLH) | Available for delivery in |
|--|----------------------|-----------------------------|------------------------------|
| Level 2 Diploma in Work-based Game and Wildlife Management (0069-21, -22, -23, -24) | 501/0406/8 | 300 | England, NI, Wales, Scotland |
| Level 3 Diploma in Work-based Game and Wildlife Management (0069-31, -32, -33) | 501/0400/7 | 410 | England, NI, Wales, Scotland |

[View our land and wildlife qualifications on our website](#)





Land-based Engineering

Land-based Engineering is the driving force behind modern agriculture and environmental management. They develop expertise in maintaining, repairing, and innovating machinery that supports modern agriculture and environmental management. Learners gain mechanical and engineering skills applied to tractors, harvesters, precision farming equipment, and ground care machinery. These qualifications prepare learners to enhance productivity, adopt smart technologies, and develop sustainable solutions for rural industries.

Qualifications

| Qualification | Accreditation number | Guided learning hours (GLH) | Available for delivery in |
|---|----------------------|-----------------------------|------------------------------|
| Level 2 Diploma in Work-based Land-based Engineering Operations (0059-21, -22, -23, -24, 25) | 501/0302/7 | 660 | England, NI, Wales, Scotland |
| Level 3 Diploma in Work-based Land-based Engineering Operations (0059-31, -32, -33, -34, 35) | 501/0399/4 | 360 | England, NI, Wales, Scotland |
| Level 2 Technical Certificate in Land-based Engineering (0171-28) | 603/0145/4 | 360 | England, NI, Wales, Scotland |
| Level 3 Advanced Technical Extended Diploma in Land-based Engineering (1080) (0171-38) | 601/7463/8 | 1080 | England, NI, Wales, Scotland |
| Level 3 Diploma in Land-based Technology (0075-03) | 501/0681/8 | 720 | England, NI, Wales, Scotland |
| Level 3 Extended Diploma in Land-based Technology (0075-03) | 501/0682/X | 1080 | England, NI, Wales, Scotland |
| Level 3 Subsidiary Diploma in Land-based Technology (0075-03) | 501/0694/6 | 360 | England, NI, Wales, Scotland |
| Level 3 90-Credit Diploma in Land-based Technology (0075-03) | 600/5945/X | 540 | England, NI, Wales, Scotland |
| Level 3 Certificate in Land-based Technology (0075-03) | 501/0693/4 | 180 | England, NI, Wales, Scotland |

[View our Land-based engineering qualifications on our website](#)





Entry Level and Level 1 Land-based

Entry Level and Level 1 Land-based qualifications provide a practical introduction to the sector, allowing learners to explore different pathways and sub-sectors. Through hands-on learning, learners develop employability, life, and work-related skills while gaining insight into potential careers and progression into further training or employment.

Qualifications

| Qualification | Accreditation number | Guided learning hours (GLH) | Available for delivery in |
|---|----------------------|-----------------------------|------------------------------|
| Level 1 Award in Land-based Studies (0361-12) | 603/3595/6 | 100 | England, NI, Wales, Scotland |
| Level 1 Certificate in Land-based Studies (0361-13) | 603/3596/8 | 200 | England, NI, Wales, Scotland |
| Level 1 Diploma in Land-based Studies (0361-14) | 603/3597/X | 350 | England, NI, Wales, Scotland |
| Entry Level 2 Award in Skills for Working Life (4807-02) | 601/3708/3 | 39 | England, NI, Wales, Scotland |
| Entry Level 2 Certificate in Skills for Working Life (4807-02) | 601/3709/5 | 192 | England, NI, Wales, Scotland |
| Entry Level 2 Diploma in Skills for Working Life (4807-02) | 601/3714/9 | 336 | England, NI, Wales, Scotland |
| Entry Level 3 Award in Skills for Working Life (4807-03) | 601/3711/3 | 37 | England, NI, Wales, Scotland |
| Entry Level 3 Certificate in Skills for Working Life (4807-03) | 601/3710/1 | 172 | England, NI, Wales, Scotland |
| Entry Level 3 Diploma in Skills for Working Life (4807-03) | 601/3802/6 | 326 | England, NI, Wales, Scotland |

[View our entry level qualifications on our website](#)



NPTC by City & Guilds Land-based CoCs

Explore our comprehensive range of CoCs and LtP qualifications.

Chainsaw and Related Operations

Chainsaws are used extensively within the arboriculture and forestry industries. It is vital that anyone using a chainsaw at work has had adequate training and is competent to do their job. Chainsaw operators work in a diverse range of job roles within forests, local and national parks, woodlands, farms and estates and in urban settings.

Qualifications

| Qualification | Accreditation number | Guided learning hours (GLH) | Available for delivery in |
|---|----------------------|-----------------------------|------------------------------|
| Level 2 Certificate of Competence in Chainsaw Maintenance and Cross-Cutting (0039-20) | 603/7353/2 | 16 | England, NI, Wales, Scotland |
| Level 2 Certificate of Competence in Felling Small Trees up to 380mm (0039-21) | 603/7354/4 | 24 | England, NI, Wales, Scotland |
| Level 2 Certificate of Competence in Climbing Trees and Aerial Rescue (0039-22) | 603/7355/6 | 40 | England, NI, Wales, Scotland |
| Level 2 Certificate of Competence in Using a Chainsaw from a Rope and Harness (0039-23) | 603/7356/8 | 24 | England, NI, Wales, Scotland |
| Level 2 Certificate of Competence in Arboricultural Ground Worker (0039-24) | 603/7643/0 | 16 | England, NI, Wales, Scotland |
| Level 2 Certificate of Competence in Branch Removal and Crown Breakdown (0039-25) | 603/7644/2 | 16 | England, NI, Wales, Scotland |
| Level 2 Certificate of Competence in Powered Pole Pruner Maintenance and Operation (0039-26) | 603/7645/4 | 16 | England, NI, Wales, Scotland |
| Level 2 Certificate of Competence in Felling Utility Poles (0039-27) | 603/7884/0 | 8 | England, NI, Wales, Scotland |
| Level 3 Certificate of Competence in Assisted Felling (0039-30) | 603/7357/X | 24 | England, NI, Wales, Scotland |
| Level 3 Certificate of Competence in Aerial Tree Pruning (0039-31) | 603/7358/1 | 16 | England, NI, Wales, Scotland |
| Level 3 Certificate of Competence in Aerial Tree Rigging (0039-32) | 603/7359/3 | 24 | England, NI, Wales, Scotland |

| Qualification | Accreditation number | Guided learning hours (GLH) | Available for delivery in |
|--|----------------------|-----------------------------|------------------------------|
| Level 3 Certificate of Competence in Felling and Processing Medium Trees over 380mm and up to 760mm (0039-33) | 603/7646/6 | 24 | England, NI, Wales, Scotland |
| Level 3 Certificate of Competence in Felling and Processing Large Trees over 760mm (0039-34) | 603/7647/8 | 16 | England, NI, Wales, Scotland |
| Level 3 Certificate of Competence in Dealing with Interwoven Stems and Part Blown Trees (0039-35) | 603/7648/X | 20 | England, NI, Wales, Scotland |
| Level 3 Certificate of Competence in Emergency Treework Planning (0039-36) | 603/7649/1 | 8 | England, NI, Wales, Scotland |
| Level 3 Certificate of Competence in Individual Windblown Trees (0039-37) | 603/7650/8 | 16 | England, NI, Wales, Scotland |
| Level 3 Certificate of Competence in Use of a Chainsaw from a Mobile Elevating Work Platform (MEWP) (0039-38) | 603/7651/X | 24 | England, NI, Wales, Scotland |

[View our chainsaw and related qualifications on our website](#)





Forestry and Arboriculture

Forestry and arboriculture involve managing and caring for trees and woodlands in a sustainable way across different landscapes. In the UK, around 21,000 people work in this field, planting, maintaining, and harvesting forests for wood and timber on sites of all sizes. Arboriculture is about caring for individual trees in parks, streets, and private estates. These qualifications teach practical skills in tree care, woodland management, and environmental stewardship, helping learners begin careers that protect habitats and support sustainable land use.

Qualifications

| Qualification | Accreditation number | Guided learning hours (GLH) | Available for delivery in |
|---|----------------------|-----------------------------|---------------------------------|
| NPTC Level 2 Award in Branch Removal and Crown Breakdown using a Chainsaw (0020-05) | 600/6303/8 | 15 | England, NI, Wales and Scotland |
| NPTC Level 2 Award in Forest Machine Operations - Forwarder (0020-16) | 600/9103/4 | 38 | England, NI, Wales, Scotland |
| NPTC Level 2 Award in Forest Machine Operations - Felling (0020-17) | 600/9104/6 | 38 | England, NI, Wales, Scotland |
| NPTC Level 2 Award in Forest Machine Operations - Processing (0020-18) | 600/9105/8 | 38 | England, NI, Wales, Scotland |
| NPTC Level 2 Award in Forest Machine Operations - Cable Crane (0020-19) | 600/9106/X | 70 | England, NI, Wales, Scotland |
| NPTC Level 2 Award in Forest Machine Operations - Skidder (0020-20) | 600/9107/1 | 35 | England, NI, Wales, Scotland |
| NPTC Level 2 Award in Forest Machine Operations - Chokerman (0020-21) | 600/9108/3 | 35 | England, NI, Wales, Scotland |
| NPTC Level 2 Award in Forest Machine Operations - Base Machine (0020-30) | 600/9102/2 | 35 | England, NI, Wales, Scotland |
| NPTC Level 2 Award in Forest Machine Operations - Processing Timber (0020-31) | 601/0428/4 | 35 | England, NI, Wales, Scotland |
| NPTC Level 2 Award in Forest Machine Operations - Drainage or Mounding (0020-32) | 600/9109/5 | 35 | England, NI, Wales, Scotland |
| NPTC Level 2 Award in Forest Machine Operations - Flail/Mulcher (0020-36) | 600/9113/7 | 35 | England, NI, Wales, Scotland |
| NPTC Level 2 Award in Forest Machine Operations - Static Loader (0020-37) | 601/0430/2 | 35 | England, NI, Wales, Scotland |
| NPTC Level 2 Award in Forest Machine Operations - Base Machine with Forwarder (0020-42) | 600/9750/4 | 73 | England, NI, Wales, Scotland |
| NPTC Level 2 Award in Forest Machine Operations - Base Machine with Felling and Processing (0020-43) | 600/9751/6 | 111 | England, NI, Wales, Scotland |
| NPTC Level 2 Award in Forest Machine Operations - Base Machine with Skidder (0020-45) | 600/9419/9 | 70 | England, NI, Wales, Scotland |



| Qualification | Accreditation number | Guided learning hours (GLH) | Available for delivery in |
|--|----------------------|-----------------------------|------------------------------|
| NPTC Level 2 Award in the Safe Use of Stump Grinders (0020-59) | 601/2266/3 | 8 | England, NI, Wales, Scotland |
| NPTC Level 2 Award In the Safe Use of Forestry Clearing Saw (0020-60) | 601/2268/7 | 8 | England, NI, Wales, Scotland |
| NPTC Level 2 Award In Safe Use of Manually Fed Wood-chipper (0020-61) | 601/2267/5 | 8 | England, NI, Wales, Scotland |

[View our forestry and arboriculture qualifications on our website](#)





Health & Safety

Health and safety are essential for anyone working in Land-based industries. The Health & Safety Executive (HSE) helps protect people and places, making sure individuals feel safe where they live, work, and interact with their environment. Because Land-based industries are among the highest-risk sectors in the UK, workers need proper training to handle machinery, equipment, and animals safely. These qualifications give learners the knowledge and practical skills to work safely and responsibly, supporting a culture of wellbeing and risk awareness in the sector.

Qualifications

| Qualification | Accreditation number | Guided learning hours (GLH) | Available for delivery in |
|---|----------------------|-----------------------------|------------------------------|
| Level 2 Award in the Safe Manual Handling of Objects (0018-04) | 600/6444/4 | 14 | England, NI, Wales, Scotland |
| Level 2 Certificate of Technical Competence in Health and Safety for the Land-based Industries (0018-21) | 603/0840/0 | 12 | England, NI, Wales, Scotland |
| Level 3 Certificate of Technical Competence in Risk Assessment for the Land-based Industries (0018-31) | 603/0842/4 | 12 | England, NI, Wales, Scotland |

[View our health and safety qualifications on our website](#)





Livestock

Livestock farming is central to food production and important for the wider economy. Learners study the basics of livestock breeding, care, and production for many species, such as beef and dairy cattle, sheep, pigs, goats, and poultry. These qualifications build practical skills and industry knowledge, preparing learners for careers in animal care, sustainable farming, and supporting the future of food supply.

Qualifications

| Qualification | Accreditation number | Guided learning hours (GLH) | Available for delivery in |
|--|----------------------|-----------------------------|------------------------------|
| NPTC Level 3 Award in Planning and Supervising the Safe Use of Veterinary Medicines (0128-01) | 500/6828/3 | 35 | England, NI, Wales, Scotland |
| NPTC Level 2 Award in the Safe Use of Sheep Dip (0141-03) | 500/7692/9 | 14 | England, NI, Wales, Scotland |
| NPTC Level 2 Award in the Transport of Animals by Road (Short Journeys) (0141-04) | 600/0306/6 | 23 | England, NI, Wales, Scotland |
| NPTC Level 2 Award in the Long Distance Transport of Animals by Road - Attendant (0141-05) | 600/0803/9 | 38 | England, NI, Wales, Scotland |
| NPTC Level 2 Award in the Long Distance Transport of Animals by Road - Driver (0141-06) | 600/0307/8 | 45 | England, NI, Wales, Scotland |
| Level 2 Certificate of Competence in the Safe and Responsible Use of Veterinary Medicines (0141-21) | 601/8781/5 | 12 | England, NI, Wales, Scotland |

[View our livestock qualifications on our website](#)





Land-based Machinery

Land-based engineering covers many activities, from using traditional tractors and farm equipment to working with new Agri-tech and modern farming tools. The field also includes grounds maintenance and garden machinery service. These qualifications give learners hands-on engineering skills and technical knowledge, preparing them for careers that keep important equipment running safely, efficiently, and sustainably in both rural and urban areas.

Qualifications

| Qualification | Accreditation number | Guided learning hours (GLH) | Available for delivery in |
|---|----------------------|-----------------------------|------------------------------|
| Level 2 Certificate of Competence in Tractor Driving and Related Operations (0014-31) | 603/5337/5 | 28 | England, NI, Wales, Scotland |
| Level 2 Certificate of Competence in the Safe Use of All-terrain Vehicles (ATVs) (0014-32) | 603/5338/7 | 14 | England, NI, Wales, Scotland |
| Level 2 Certificate of Competence in Fork Lift Truck Operations (0014-33) | 603/5339/9 | 24 | England, NI, Wales, Scotland |
| Level 2 Certificate of Competence in the Safe Use of Hand Held Hedge Cutters (0014-34) | 603/5340/5 | 8 | England, NI, Wales, Scotland |
| Level 2 Certificate of Competence in the Safe Use of Mowers (0014-35) | 603/5341/7 | 8 | England, NI, Wales, Scotland |
| Level 2 Certificate of Competence in the Safe Use of Tractor-Mounted Hedge and Verge Cutters (0014-36) | 603/5342/9 | 11 | England, NI, Wales, Scotland |
| Level 2 Certificate of Competence in Multi-tool Equipment (0014-37) | 603/5619/4 | 4 | England, NI, Wales, Scotland |
| Level 2 Certificate of Competence in Remote-Control Machinery (0014-38) | 603/5618/2 | 7 | England, NI, Wales, Scotland |
| NPTC Level 2 Award in the Safe Use of Handheld Leaf Blowers and Vacuums (0014-39) | 601/1290/6 | 16 | England, NI, Wales, Scotland |
| NPTC Level 2 Award in the Safe Use of Shredders in Amenity Operations (0014-40) | 601/1289/X | 23 | England, NI, Wales, Scotland |
| NPTC Level 2 Award in the Safe Use of Brush-cutters and Trimmers (0014-41) | 601/1299/2 | 23 | England, NI, Wales, Scotland |
| NPTC Level 2 Award In The Safe Use of Mobile Elevated Work Platform (0017-03) | 601/1990/1 | 15 | England, NI, Wales, Scotland |
| NPTC Level 2 Award in Off-Road Driving (0123-01) | 500/7889/6 | 35 | England, NI, Wales, Scotland |



| Qualification | Accreditation number | Guided learning hours (GLH) | Available for delivery in |
|--|----------------------|-----------------------------|------------------------------|
| NPTC Level 2 Certificate of Competence in the Safe Operation of Dumper Trucks (0124-01) | 100/2000/7 | 12 | England, NI, Wales, Scotland |
| NPTC Level 2 Certificate of Competence in the Safe Use of Abrasive Wheel Machines (0125-01) | 100/2001/9 | 8 | England, NI, Wales, Scotland |
| NPTC Level 2 Certificate of Competence in the Safe Use of Plant Machinery (0126-01) | 100/2013/5 | 12 | England, NI, Wales, Scotland |

[View our Land-based machinery qualifications on our website](#)



Pesticides and Pest Control

Pesticides, also known as plant protection products (PPPs), are used to manage pests, weeds, and diseases across a variety of land-based industries. These include insecticides, fungicides, herbicides, molluscicides, and plant growth regulators. Pesticide application plays an essential role in agriculture, amenity horticulture, aquaculture, and forestry, helping to safeguard crops and maintain healthy environments. These products can be applied using a range of equipment, from hand-held applicators to specialised machinery and aerial delivery systems, ensuring treatments are effective, targeted, and safe.

Qualifications

| Qualification | Accreditation number | Guided learning hours (GLH) | Available for delivery in |
|--|----------------------|-----------------------------|------------------------------|
| City & Guilds Level 2 Award in the Safe Use of Pesticides for Vertebrate Pest Control for Rats and Mice (PA-R&M) (0216-70) | 610/6545/6 | 56 | England, NI, Wales, Scotland |
| City & Guilds Level 2 Award in the Safe Use of Aluminium Phosphide for Vertebrate Pest Control (PA-AP) (0216-71) | 610/6546/8 | 56 | England, NI, Wales, Scotland |
| City & Guilds Level 2 Award in the Safe Use of Traps for Vertebrate Pest Control (TVPC) (0216-72) | 610/6547/X | 28 | England, NI, Wales, Scotland |
| City & Guilds Level 2 Award in the Principles of Safe Handling and Application of Pesticides (PA1) (0216-73) | n/a | 26 | England, NI, Wales, Scotland |
| City & Guilds Level 2 Award in the Safe Application of Pesticides Using Self-Propelled, Mounted or Trailed Horizontal Boom Sprayers (PA2) (0216-74) | 610/6548/1 | 54 | England, NI, Wales, Scotland |
| City & Guilds Level 2 Award in the Safe Application of Pesticides Using Variable Geometry Boom or Broadcast Sprayers (PA3) (0216-75) | 610/6549/3 | 54 | England, NI, Wales, Scotland |
| City & Guilds Level 2 Award in the Safe Application of Pelleted or Granular Pesticides Using Mounted or Trailed Applicators (PA4) (0216-76) | 610/6550/X | 54 | England, NI, Wales, Scotland |
| City & Guilds Level 2 Award in the Safe Application of Pesticides Using Boat Mounted Equipment (PA5) (0216-77) | 610/6551/1 | 54 | England, NI, Wales, Scotland |
| City & Guilds Level 2 Award in the Safe Application of Pesticides Using Pedestrian Handheld Equipment (PA6) (0216-78) | 610/6552/3 | 54 | England, NI, Wales, Scotland |
| City & Guilds Level 2 Award in the Safe Application of Pesticides from the Air (PA7) (0216-79) | 610/6553/5 | 54 | England, NI, Wales, Scotland |
| City & Guilds Level 2 Award in the Safe Mixing and Transferring of Pesticides (PA8) (0216-80) | 610/6554/7 | 54 | England, NI, Wales, Scotland |
| City & Guilds Level 2 Award in the Safe Application of Pesticide Mists, Fogs or Smokes (PA9) (0216-81) | 610/6555/9 | 54 | England, NI, Wales, Scotland |
| City & Guilds Level 2 Award in the Safe Dipping of Plant Material in Pesticides (PA10) (0216-82) | 610/6556/0 | 54 | England, NI, Wales, Scotland |



| Qualification | Accreditation number | Guided learning hours (GLH) | Available for delivery in |
|--|----------------------|-----------------------------|------------------------------|
| City & Guilds Level 2 Award in the Safe Treatment of Seeds with Pesticides (PA11) (0216-83) | 610/6557/2 | 54 | England, NI, Wales, Scotland |
| City & Guilds Level 2 Award in the Safe Application of Pesticides to Plant Material During a Continuous Flow Process (PA12) (0216-84) | 610/6558/4 | 54 | England, NI, Wales, Scotland |
| City & Guilds Level 2 Award in the Safe Sub Surface Application of Liquid Pesticides (PA13) (0216-85) | 610/6559/6 | 54 | England, NI, Wales, Scotland |
| City & Guilds Level 2 Award in the Safe Application of Pesticides Using Specialist Equipment (PASC) (0216-86) | 610/6560/2 | 54 | England, NI, Wales, Scotland |
| City & Guilds Level 3 Award in Responsible Pesticide Management (PA-RPM) (0216-87) | 610/6561/4 | 104 | England, NI, Wales, Scotland |

[View our pesticide and pest control qualifications on our website](#)



Thorough Examination of Arboriculture Equipment Utility Arboriculture

Thorough examination of arboriculture equipment is essential for safe and effective practice across the sector. In the UK, utility arboriculture is a significant area of work, with the Arboricultural Association estimating that around £150 million is spent each year on managing vegetation near electricity networks. This specialist field also includes work carried out alongside railways, waterways, and telecommunications infrastructure.

Qualifications

| Qualification | Accreditation number | Guided learning hours (GLH) | Available for delivery in |
|--|----------------------|-----------------------------|------------------------------|
| Level 3 Certificate of Competence in Thorough Examination of Arboricultural Equipment (0037-03) | 603/7883/9 | 24 | England, NI, Wales, Scotland |

[View our examination of arboricultural equipment qualifications on our website](#)



Utility Arboriculture

Utility arboriculture activities need to be carried out legally, safely and competently. City & Guilds qualifications provide assessment of both underpinning knowledge and practical skills.

Qualifications

| Qualification | Accreditation number | Guided learning hours (GLH) | Available for delivery in |
|---|----------------------|-----------------------------|------------------------------|
| Level 3 Certificate of Competence in Utility Arboriculture Basic Electrical Knowledge (0038-30) | 603/7885/2 | 16 | England, NI, Wales, Scotland |
| Level 3 Certificate of Competence in Utility Arboriculture Tree species Recognition, Growth Characteristics and Associated Hazards (0038-31) | 603/7886/4 | 8 | England, NI, Wales, Scotland |
| Level 3 Certificate of Competence in Utility arboriculture Ground-based Pruning (0038-32) | 603/7887/6 | 8 | England, NI, Wales, Scotland |
| Level 3 Certificate of Competence in Utility Arboriculture Aerial Pruning (0038-33) | 603/7888/8 | 8 | England, NI, Wales, Scotland |
| Level 3 Certificate of Competence in Utility Arboriculture Assisted Tree Felling (0038-34) | 603/7889/X | 16 | England, NI, Wales, Scotland |
| Level 3 Certificate of Competence in Utility Arboriculture Use of Chainsaw from a Mobile Elevating Work Platform (MEWP) (0038-35) | 603/7890/6 | 16 | England, NI, Wales, Scotland |
| Level 4 Certificate of Competence in Utility Arboriculture Surveyor (0038-40) | 603/7891/8 | 24 | England, NI, Wales Scotland |
| Level 4 Certificate of Competence in ETR 132 Resilience Arboricultural Surveyor (0038-41) | 603/7892/X | 16 | England, NI, Wales, Scotland |

NPTC by City & Guilds Land-based CPD and Refreshers

Explore our comprehensive range of Land-based CPD and refreshers.

CPD provides opportunities to learn new skills, refresh existing knowledge, and stay up to date with the latest developments across the industry. Working closely with sector partners, NPTC by City & Guilds is committed to supporting a competent, confident workforce that can demonstrate current skills and best practice in their day-to-day roles. Our CPD and refresher modules have been developed to reinforce this commitment and help professionals maintain high standards and continue progressing throughout their careers.

Chainsaw and Related Operations

CPD

| Module | Accreditation number | Guided learning hours (GLH) | Available for delivery in |
|---|----------------------|-----------------------------|------------------------------|
| Level 2 CPD Module in Chainsaw Maintenance and Cross-cutting (0041-01) | 610/6048/3 | 7 | England, NI, Wales, Scotland |
| Level 2 CPD Module in Felling Small Trees up to 380mm (0041-02) | 610/6049/5 | 10 | England, NI, Wales, Scotland |
| Level 2 CPD Module in Climbing Trees and Aerial Rescue (0041-03) | 610/6050/1 | 16 | England, NI, Wales, Scotland |
| Level 2 CPD Module in Using a Chainsaw from a Rope and Harness (0041-04) | 610/6051/3 | 10 | England, NI, Wales, Scotland |
| Level 3 CPD Module in Aerial Tree Rigging (0041-05) | 610/6052/5 | 10 | England, NI, Wales, Scotland |
| Level 3 CPD Module in Felling and Processing Medium Trees over 380mm and up to 760mm (0041-14) | 610/6061/6 | 10 | England, NI, Wales, Scotland |
| Level 3 CPD Module in Felling and Processing Large Trees over 760mm (0041-15) | 610/6062/8 | 7 | England, NI, Wales, Scotland |
| Level 3 CPD Module in Dealing with Interwoven Stems and Part Blown Trees (0041-16) | 610/6063/X | 8 | England, NI, Wales, Scotland |
| Level 3 CPD Module in Individual Windblown Trees (0041-17) | 610/6064/1 | 7 | England, NI, Wales, Scotland |
| Level 2 CPD Module in Safe Use of a Manually Fed Woodchipper (0041-18) | 610/6065/3 | 4 | England, NI, Wales, Scotland |

[View our chainsaw and related operations CPD offering on our website](#)





Utility Arboriculture

CPD

| Module | Accreditation number | Guided learning hours (GLH) | Available for delivery in |
|--|----------------------|-----------------------------|------------------------------|
| Level 3 CPD Module in Utility Arboriculture Basic Electrical Knowledge (0041-06) | 610/6053/7 | 8 | England, NI, Wales, Scotland |
| Level 3 CPD Module in Utility Arboriculture Tree Species Recognition, Growth Characteristics and Associated Hazards (0041-07) | 610/6054/9 | 8 | England, NI, Wales, Scotland |
| Level 3 CPD Module in Utility Arboriculture Ground-based Pruning (0041-08) | 610/6055/0 | 8 | England, NI, Wales, Scotland |
| Level 3 CPD Module in Utility Arboriculture Aerial Pruning (0041-09) | 610/6056/2 | 8 | England, NI, Wales, Scotland |
| Level 3 CPD Module in Utility Arboriculture Assisted Tree Felling (0041-10) | 610/6057/4 | 8 | England, NI, Wales, Scotland |
| Level 3 CPD Module in Utility Arboriculture Use of a Chainsaw from a Mobile Elevating Work Platform (MEWP) (0041-11) | 610/6058/6 | 8 | England, NI, Wales, Scotland |
| Level 4 CPD Module in Utility Arboriculture Surveyor (0041-12) | 610/6059/8 | 20 | England, NI, Wales, Scotland |
| Level 4 CPD Module in ETR 132 Resilience Arboricultural Surveyor (0041-13) | 610/6060/4 | 16 | England, NI, Wales, Scotland |

[View our utility arboriculture CPD offering on our website](#)





Pesticides Application

CPD

| Module | Accreditation number | Guided learning hours (GLH) | Available for delivery in |
|--|----------------------|-----------------------------|------------------------------|
| Refresher in The Safe Application of Pesticides Using Self-Propelled, Mounted or Trailed Hydraulic Nozzle Horizontal Boom Sprayers (PA2A) (0041-19) | n/a | n/a | England, NI, Wales, Scotland |
| Refresher in The Safe Application of Pesticides Using Broadcast Sprayers with Air Assistance (PA3A) (0041-20) | n/a | n/a | England, NI, Wales, Scotland |
| Refresher in The Safe Application of Granular or Pelleted Pesticides Using Mounted or Trailed Applicators (PA4G) (PA4S) (0041-21) | n/a | n/a | England, NI, Wales, Scotland |
| Refresher in The Safe Application of Pesticides Using Pedestrian Handheld Applicators Fitted with Hydraulic Nozzles or Rotary Atomisers to Apply Pesticides to Land (PA6A) (0041-22) | n/a | n/a | England, NI, Wales, Scotland |
| Refresher in The Safe Application of Pesticides Using Pedestrian Handheld Applicators Fitted with Hydraulic Nozzles or Rotary Atomisers to Apply Pesticides to or Near Water (PA6AW) (0041-23) | n/a | n/a | England, NI, Wales, Scotland |
| Refresher in The Safe Application of Pesticide Mists Less than 100 microns VMD Indoors and Outdoors (PA9A) (PA9B) (0041-24) | n/a | n/a | England, NI, Wales, Scotland |

[View our pesticide application qualifications on our website](#)



More skills solutions for your learners

Support your learners at every stage of their journey with functional skills, employability skills, leadership qualifications and more.

Skills for Work and Life

Maths, English and digital skills are essential at every stage of life. Whether learning, training or working, the ability to effectively communicate, work with numbers, solve problems and use technology is key to success.

At City & Guilds we offer a full range of support to strengthen maths, English and applied digital skills for 16-18s, adults and apprentices. This includes highly recognised qualifications such as Functional Skills, plus a broad set of developmental qualifications available from Entry Level 1 to Level 2 (Digital Functional Skills is available at Entry Level 3 and Level 1). Our flexible digital learning resources and support tools are designed to support learners at every stage.

Our ESOL Skills for Life, a suite of qualifications from Entry Level 1 to Level 2, supports speakers of other languages based within the UK to develop their English for work, further learning or everyday life. We shaped our offer around the specific needs of ESOL centres and learners, supporting flexible delivery, responsive assessment and encouraging maximum learner engagement.

In addition, we provide a broad, flexible range of Employability Skills qualifications, helping learners to enter the employment market or progress within their chosen sector.

[Find out more](#)

Assured – accredit your in-house training

We know that some organisations have specific training needs that cannot be met by existing qualifications. Our Assured service has been designed to evaluate and certify in-house training programmes against our Assured Benchmark Standards, confirming the quality of the processes and systems used to design, plan and deliver the training.

Securing Assured recognition demonstrates the strength of your training both internally and externally, showing that you take your employees' development seriously and that you are ensuring your workforce has the skills that you need.

[Learn more](#)





Sustainability and the green environment

Sustainability is now a priority across every industry, and employers are looking for individuals who understand how to work in more environmentally responsible ways. The Level 2 Award & Certificate in Sustainability and the Green Environment are ideal additions to your portfolio, helping you meet the growing demand for green skills across sectors.

Designed to support learners in any job role, these qualifications build knowledge around climate change, sustainability, and net zero, making them a strong fit alongside a wide range of programmes. Whether your learners are entering the workforce or upskilling for progression, this is a practical, future-focused way to broaden your offer and support meaningful career development.

[Learn more](#)

Level 2 Award in Wellbeing & Mental health of self and others

The Level 2 Award in Supporting Wellbeing and Mental Health of Self and Others is a short, flexible qualification designed to complement any level 2 programme. It helps learners build a foundational understanding of mental health, develop personal resilience, and gain a practical toolkit to support their own wellbeing and that of others, skills they'll carry into the workplace.

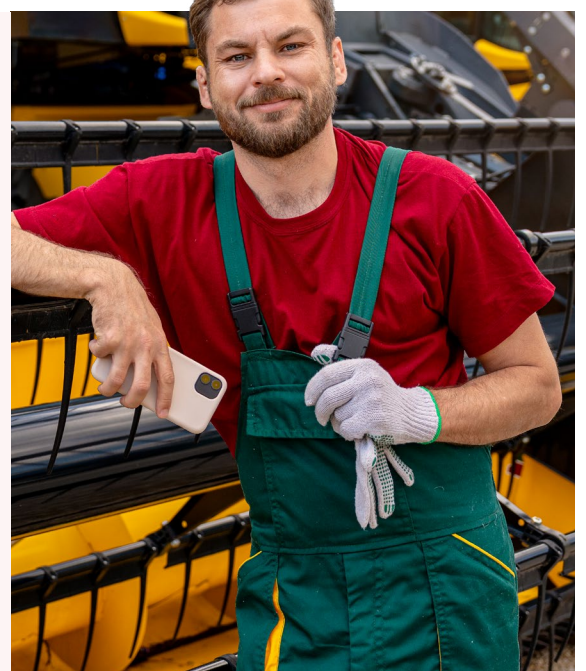
By embedding this qualification, providers add measurable value to any programme by supporting the broader development of learners, building self-awareness, confidence, and readiness for the world of work.

[Learn more](#)

ilm

Develop tomorrow's leaders with our globally-recognised leadership and management provision. From supervision to strategic leadership (levels 2-7), ILM qualifications and apprenticeships give you the frameworks and support to deliver high-impact professional development.

[Find out more](#)





Why work with City & Guilds

Working with City & Guilds gives you access to comprehensive support including qualification resource materials, in-person and online events and direct, tailored support from our teams of sector and technical experts.

As part of our commitment to supporting learners into a job, on the job and onto the next job, we also offer accreditation and certification for a modern, digital-first world, whether that's through our verifiable digital credentials or our Assured in-house training accreditation service.

Explore our range of services and support...



People support

We understand the value our customers put on having direct access to the support they need to maximise success. That's why our specialist teams are available to support you at every stage of planning and delivery.

Learn more about our support teams...

Business development managers

Your local contact on-hand to support you with all aspects of qualifications, apprenticeships and skills development.

[Find out more](#)

Client managers

Our team of training experts work with employers to identify learning needs and maximise organisational growth through tailored Strategic Skills Review sessions.

[Find out more](#)

Customer support team

Whatever your question, our customer support team are available to support with all enquiries from providers, employers and learners.

[Find out more](#)

Digital solutions managers

Our digital support team provide training sessions and advice on how to get the most out of our elearning and admin platforms to support a smooth and successful delivery.

[Find out more](#)

EPA partnership managers

From onboarding apprentices through to EPA, our partnership managers support customers at every stage of the apprenticeship journey.

[Find out more](#)

Funding and policy team

Get access to easy-to-digest funding and policy information and the latest updates through regular webinars hosted by our in-house experts.

Industry managers

Our industry experts keep customers, products and services up to date with the latest developments from their sectors, including regulatory, compliance and policy changes.

Technical advisors

With in-depth knowledge of both education and industry, our technical experts offer flexible support with programme delivery through in-person and online events and visits.

[Find out more](#)



Networking and events

We run face-to-face and online events to keep you up to date with the latest policy and practice, as well as City & Guilds qualifications and services that support delivery.

[Explore our upcoming events](#)

Teaching and learning support



SmartScreen

SmartScreen is the City & Guilds tutor and learner support platform, providing online resources for our qualifications and apprenticeships.

Supporting over 150 qualifications and apprenticeships across 20 different industries, SmartScreen equips tutors and assessors with delivery tools and learners with engaging content.

[Learn more about SmartScreen](#)



Example credential journey



Digital credentials

As more and more of the hiring process moves to an online-first model, having a digital way to help showcase knowledge and skills to potential employers can be crucial tool to support career progression.

Digital credentials are a visual representation of an individual's skills that provide a convenient way to easily capture and share accomplishments and abilities online with professional networks and potential employers. They can be shared via email or social media and can provide a map of an individual's educational journey, giving your learners a competitive edge in the workplace.

[Find out more about digital credentials](#)



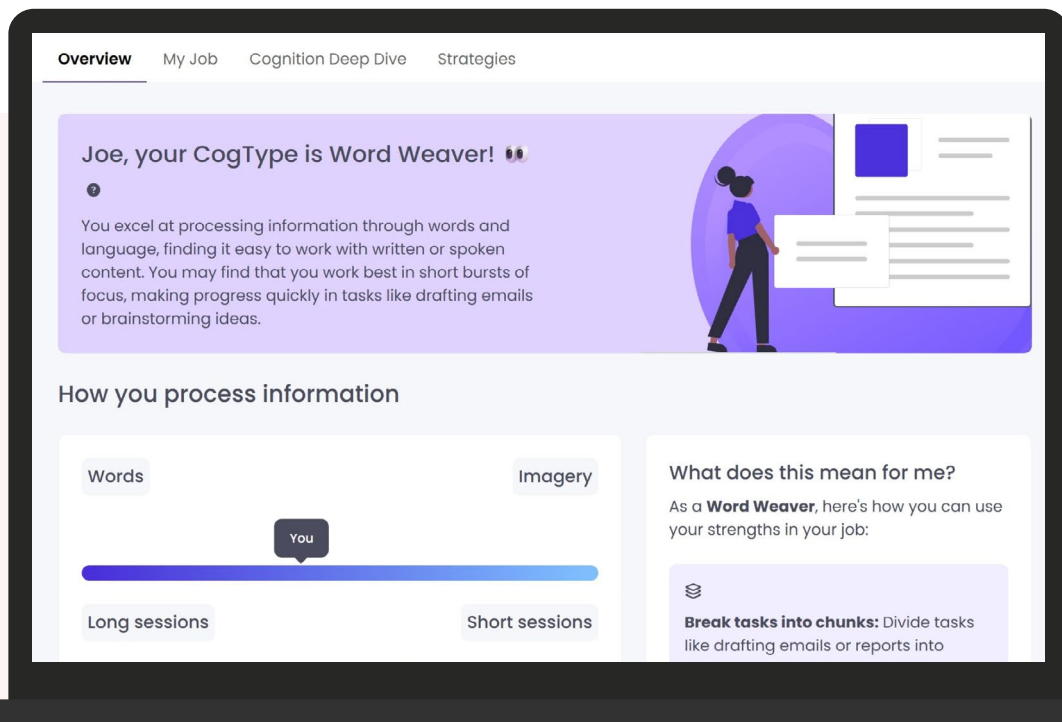
Cognassist

In today's learning environment, one-size-fits-all approaches no longer meet the diverse needs of learners. With growing pressure to improve retention, meet quality standards, and support every individual, providers need smarter, more scalable ways to personalise the learning experience.

City & Guilds has partnered with Cognassist to help providers deliver truly inclusive, personalised learning experiences that boost retention, support compliance, and improve learner outcomes.

Through cognitive assessment and personalised support strategies, this solution helps identify how each learner thinks and learns - ensuring no one is left behind.

[Find out more about the partnership](#)





Online resources and funding information

Qualifications reforms hub

Stay informed with updated guidance, timelines, upcoming support events, FAQs and news around City & Guilds qualifications

[Find out more](#)

Government resources

Find a learning aim (gov.uk) See the latest information on available qualifications, apprenticeship standards, T Levels and units.

[Find out more](#)

Department for Education funding overview

View the Department for Education's full list of funding approval information for qualifications in England.

[Find out more](#)

Guide to the post-16 qualification landscape (Department for Education)

A high-level overview of level 3 and below reformed qualifications for 2025 and beyond.

[Find out more](#)

Teaching support

Enhance your skills and confidence with flexible qualifications designed to support effective teaching, learning, and assessment across diverse settings.

[Find out more](#)

Partner with City & Guilds

Interested in delivering City & Guilds qualifications and services?

As a trusted leader in skills development, we offer a comprehensive range of qualifications and training solutions to prepare individuals for success in today's evolving workplace.

Working with us gives you access to a broad portfolio across multiple sectors, from entry-level qualifications to senior leadership pathways. Our on-hand support teams are here to help you deliver the best learning experience for your learners.

Complete our form linked below to learn more about our Land-based qualifications and training solutions.

[Get in touch](#)



About City & Guilds

City & Guilds is the global skills partner, empowering people, organisations and economies to develop the skills they need for growth. With almost 150 years of trusted expertise, we support people into work, help them develop on the job and move into the next job.

We work with Governments, employers, training providers, colleges and industry stakeholders to design and deliver high-quality training, qualifications, assessments and credentials that lead to meaningful career progression. We understand the life changing link between skills development, social mobility and success. Our solutions span critical sectors including construction, engineering, transport, energy and electrical, serving over 1 million learners annually.

Through our comprehensive portfolio of brands and trusted global network, we set industry-wide standards for technical, behavioural and commercial skills to improve performance and productivity. We believe you can achieve your potential - and we're here to help make it happen.

Contact us

Giltspur House
5-6 Giltspur Street
London EC1A 9DE

customersupport@cityandguilds.com

+44 (0) 1924 930 800

www.cityandguilds.com

Every effort has been made to ensure that the information contained in this publication is true and correct at time of publication. However, City & Guilds products and services are subject to continuous development and improvement, and the right is reserved to change products and services from time to time. City & Guilds cannot accept responsibility for any loss or damage arising from the use of information in this publication.