



Image courtesy of Michelle Thompson at Francesco Group

236

Style and finish African type hair

The demand for styling and dressing African type hair to form different effects has increased hugely over recent years.

The fantastic quality of products available today allows you to transform all hair into smooth shiny images. You'll learn about a variety of styling tools and techniques you can use to curl, straighten and set. You'll gain a sound understanding of physical effects on the hair structure during the setting, drying and thermal styling processes, and the effects of moisture on dressed hair.

Assignment mark sheet

Unit 236 Style and finish

African type hair

Your assessor will mark you on each of the practical tasks in this unit. This page is used to work out your overall grade for the unit. You must pass **all** parts of the tasks to be able to claim a grade. **For each completed practical task, a pass equals 1 point, a merit equals 2 points and a distinction equals 3 points.**

What you must know	Tick when complete
Task 1a: chart	
Task 1b: style guide	
Or tick if covered by a GOLLA online test	

What you must do	Grade	Points
Task 2a: blow-dry		
Task 2b: blow-dry		
Task 2c: finger-wave		
Task 2d: wet set		

Conversion chart

Grade	Points
Pass	1–1.5
Merit	1.6–2.5
Distinction	2.6–3

Total points for graded tasks
 Divided by
 =

÷ 4

Overall grade
 (see conversion chart)

Candidate name:

Candidate signature: Date:

Assessor signature: Date:

Quality assurance co-ordinator signature (where applicable): Date:

What does it mean?

Some useful words are explained below

Aftercare advice

Information given to the client to help with style and hair maintenance.



Barrel curl

A large curl – you can use it on short or long hair.

Backcombing

A dressing-out technique used for root lift and/or volume, achieved with a comb.

Backbrushing

Similar to backcombing, but with a brush: a softer result is achieved with this method.



Factors

Things to consider, such as hair condition and density, that affect your choice of product or style.

Finger-waving

A method of moulding wet hair into flat s-shape movements, using fingers and a comb.

When using hair spray or finishing spray, protect the clients' eyes from the spray with a shield or the back of your hand.

Fish-hooks

When hair bends back on itself and frizzes.

Hair elasticity

An indicator of the condition of the hair's cortex and the strength of the hair: strong hair can stretch and return without damage.

Hydrogen bonds

Bonds in the hair that are temporarily broken and reformed into a new shape when thermal styling

Humidity

Moisture (damp) in the air.

Pin curling

Forming the hair into curl or wave shapes, and holding in place with a spring clip until dry.



Pressing

A method of straightening the hair with heated equipment, for example a pressing comb, or flat irons.

Pressing comb

A heated comb used to stretch and comb the hair straight.

Thermal styling

A method of moulding the hair into shapes with heated equipment, for example curling tongs mould the hair into a curl.

What you must know

You must be able to:

- 1 State the factors that need to be considered
- 2 Explain the safety considerations that must be taken into account
- 3 Describe the different consultation techniques used to identify service objectives
- 4 Describe the salon's requirements for client preparation, preparing self and the work area
- 5 Describe the effects of humidity on hair
- 6 Describe the physical effects of blow-drying, and heated and thermal styling processes on the hair structure
- 7 Outline how the incorrect application of heat can affect the hair and scalp
- 8 Describe the correct use and routine maintenance of products, tools and equipment
- 9 State how to communicate and behave within a salon environment
- 10 Outline safe and hygienic working practices
- 11 Describe the aftercare advice that should be provided

Revision tip

During the thermal styling process, heat temporarily breaks some of the hydrogen bonds in the hair's structure, enabling the hair to take on the new form of the set. The hair is now in beta keratin state.



Image courtesy of www.patrick-cameron.com



Image courtesy of Michelle Thompson at Francesco Group



Images courtesy of Michelle Thompson at Francesco Group

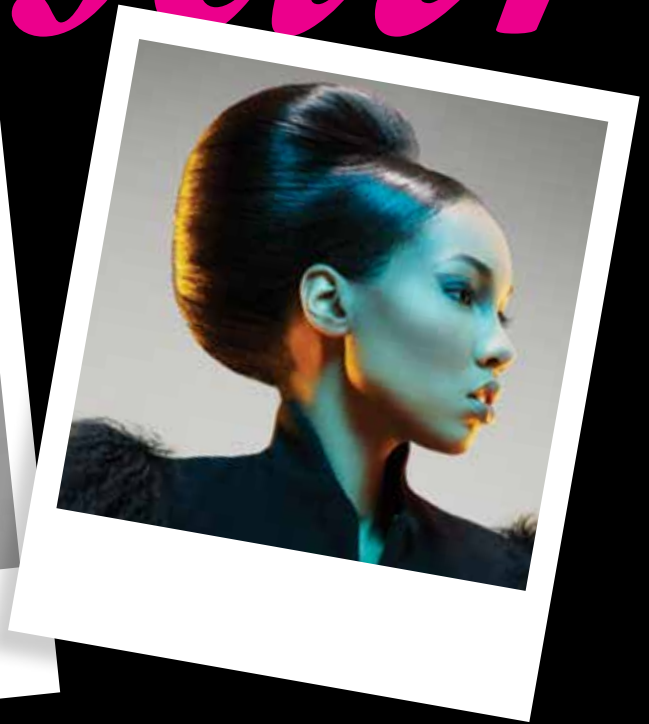
African

When blow-drying, keep the dryer pointing towards the tips (ends) of the hair, to smooth the cuticles and minimise frizz.



To achieve maximum results with heated styling equipment, always clean any product residue off straight after use.

type hair



What you must do

Practical observations

This page shows what you need to do during your practical task. You can look at it beforehand, but you're **not** allowed to have it with you while carrying out your practical task. You must achieve **all** the criteria; you can achieve 1 mark, 2 marks or 3 marks for the criteria indicated with *.

State the hair length, products and heated equipment used for each service

Hair length: two above shoulder, two below shoulder

Styling products (minimum of two)

Finishing products (minimum of two)

Heated styling equipment – straighteners (only as a finishing tool), curling tongs

- 1 Prepare self, the client and the work area for styling and finishing hair
- 2 Use suitable consultation techniques to identify service objectives *
- 3 Assess the potential of the hair to achieve the desired look by identifying the influencing factors *
- 4 Select and use suitable styling products and tools to achieve the look agreed with the client
- 5 Position self and the client appropriately throughout the service
- 6 Effectively control the client's hair during the styling process
- 7 Control the styling tools and equipment to minimise the risk of damage to the hair and client discomfort

Conversion chart

Grade	Marks
Pass	11–13
Merit	14–18
Distinction	19–21

Styling service											
1 Blow-dry			2 Blow-dry			3 Finger-wave			4 Wet set		
1			1			1			1		
1	2	3	1	2	3	1	2	3	1	2	3
1	2	3	1	2	3	1	2	3	1	2	3
1			1			1			1		
1			1			1			1		
1			1			1			1		
1			1			1			1		

Continues on next page

- 8 Use styling techniques that achieve the intended shape, direction, balance and volume agreed with the client *
- 9 Follow safe and hygienic working practices
- 10 Provide suitable aftercare advice *
- 11 Communicate and behave in a professional manner *

Totals

Grade

Candidate signature and date

Assessor signature and date

Styling service											
1 Blow-dry			2 Blow-dry			3 Finger-wave			4 Wet set		
1	2	3	1	2	3	1	2	3	1	2	3
1			1			1			1		
1	2	3	1	2	3	1	2	3	1	2	3
1	2	3	1	2	3	1	2	3	1	2	3



Image courtesy of Creative Nail Design (left)

Image courtesy of Michelle Thompson at Francesco Group (right)

What you must do

Practical observations descriptors table

This table shows what you need to do to achieve 1, 2 or 3 marks for the criteria indicated with * on the previous page.

	1 mark	2 marks	3 marks
2 Use suitable consultation techniques to identify service objectives	Basic consultation Example: uses closed questions	Good consultation Examples: uses open and closed questions, uses visual aids, aware of own body language	Thorough consultation Examples: uses open and closed questions, good use of visual aids, effective use of body language, repeats instructions clearly to gain confirmation
3 Assess the potential of the hair to achieve the desired look by identifying the influencing factors	Minimal evaluation Examples: carries out all necessary tests, assesses hair texture, length and density, client requirements	Good evaluation Examples: carries out all necessary tests, assesses hair texture, length and density, client requirements, hair growth patterns, elasticity, client lifestyle	High level of evaluation Examples: carries out all necessary tests, assesses hair texture, length and density, client requirements, hair growth patterns, elasticity, client lifestyle, head/face shape/features, contra-indications
8 Use styling techniques that achieve the intended shape, direction, balance and volume agreed with the client	Rectifies minor errors on instruction; little evidence of maximising potential of style Examples: takes minimum factors into account for style and dressing technique (hair conditions and client requirements)	Identifies and rectifies minor errors. Some evidence of maximising potential of style Examples: self-identification of errors. All factors in point 1 taken into account for style and dressing technique, plus hair growth and hair texture	Accurate over the whole look. Clear evidence of maximising potential of style Examples: all factors at point 2 taken into account for style and dressing technique, plus haircut, hair length, head/face shape and features

	1 mark	2 marks	3 marks
10 Provide suitable aftercare advice	Basic aftercare advice Examples: use of products	Good level of aftercare advice Examples: use of products and equipment	Excellent level of aftercare advice Examples: use of products and equipment, maintenance of style and further services available
11 Communicate and behave in a professional manner	Satisfactory communication and behaviour Examples: polite, friendly, positive body language, speaks clearly	Good communication and behaviour Examples: polite, friendly, positive body language, speaks clearly, respectful to colleagues and clients, listens and responds to clients' needs	Excellent communication and behaviour Examples: polite, friendly, positive body language, speaks clearly, respectful to colleagues and clients, listens and responds to clients' needs, shows a reassuring and confident manner

Image courtesy of Getty/Olivia Barr



Comment form

Unit 236 Style and finish African type hair

This form can be used to record comments by you, your client, or your assessor.

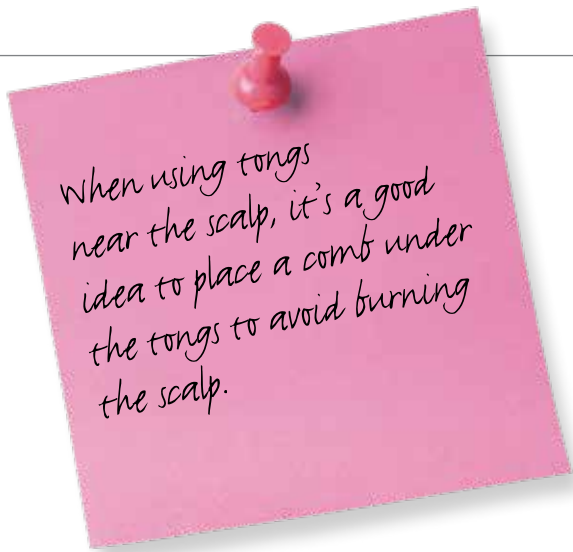


Image courtesy of Michelle Thompson at Francesco Group

