

Practical Assignment

Version A

General Notes

Centres are to complete dimension details to suit locality.

All Items with red border are to be pre-fixed prior to assessment.

Ceiling rose flex shall not be pre-made.

Steel armour of SWA to be used as CPC.

All accessories must be fitted as aligned on drawing.

Fixings, clips, saddles etc not shown but must be fitted in accordance with industry guidance.

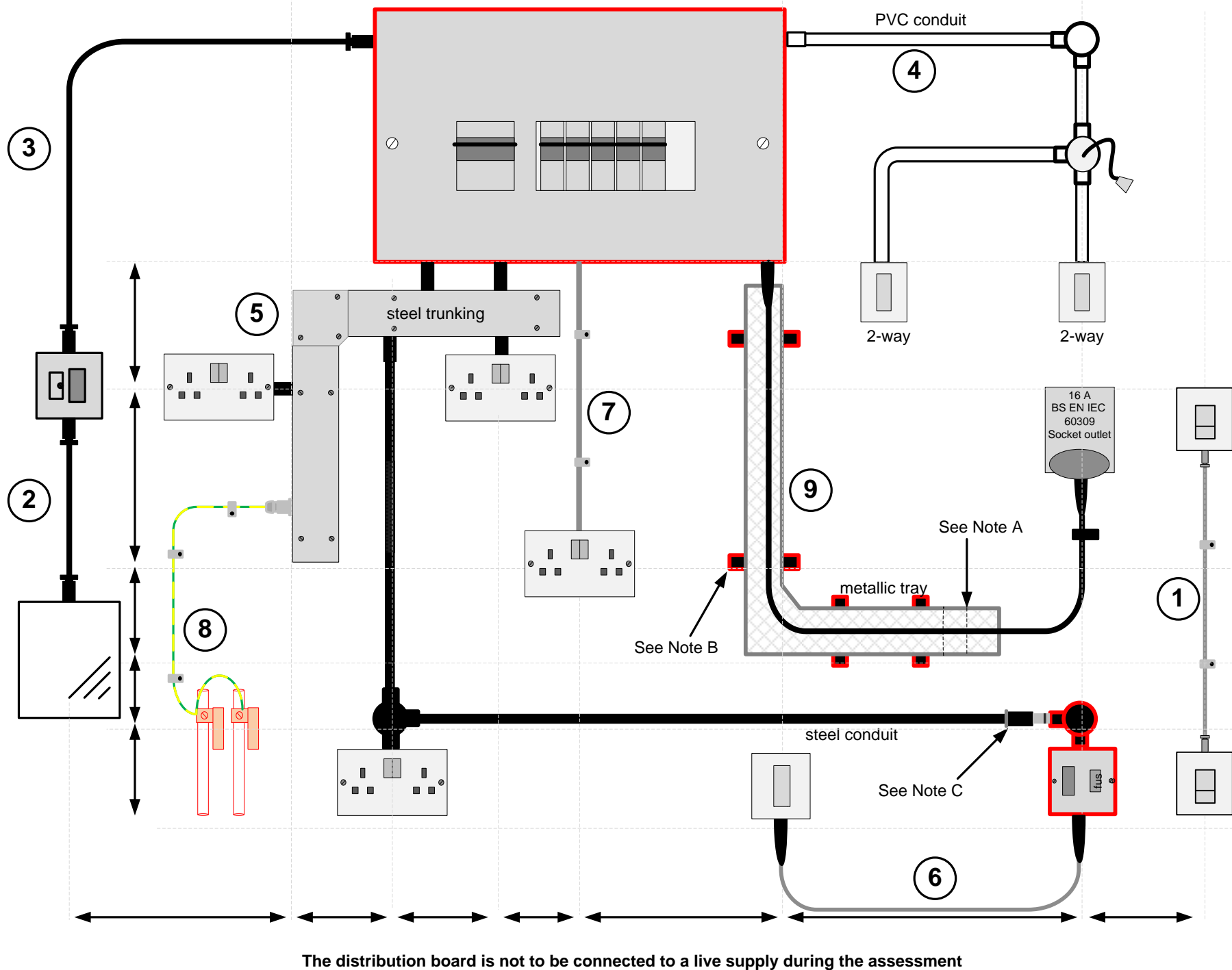
Specific Notes

A. Tray is to set down to be flush with wall at this point.

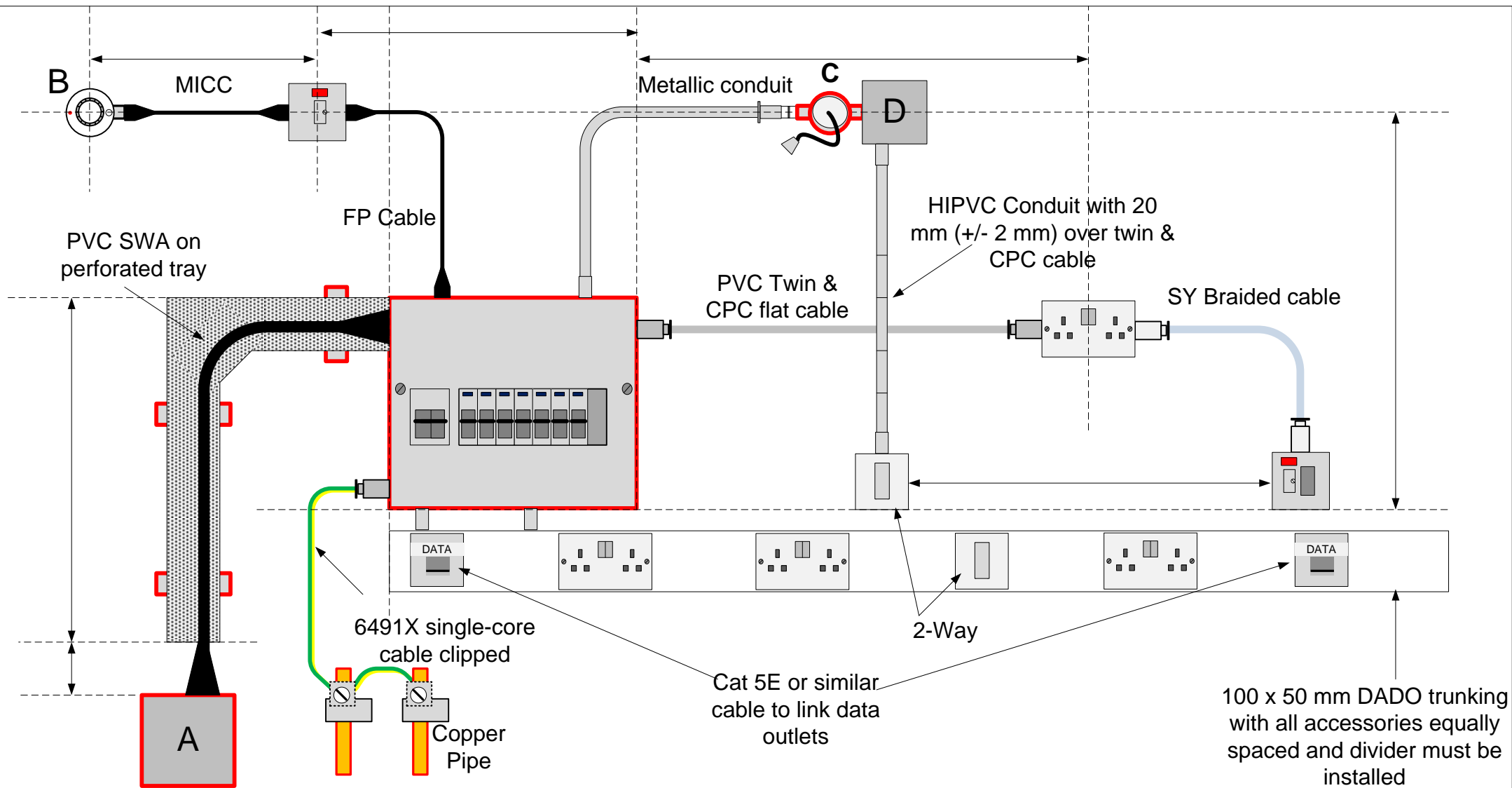
B. Pre-fixed tray support brackets to space tray off wall by a minimum of 15 mm.

C. Running coupler to allow join to fixed item.

See specific task instructions for circuit type and requirements



The distribution board is not to be connected to a live supply during the assessment



City & Guilds
5357-107

Practical Assignment

Version B

General Notes

Centres are to complete dimension details to suit locality.

All Items with red border are to be pre-fixed prior to assessment.

All accessories must be fitted as aligned on drawing.

Fixings, clips, saddles etc not shown but must be fitted in accordance with industry guidance.

See specific task instructions for circuit type and requirements

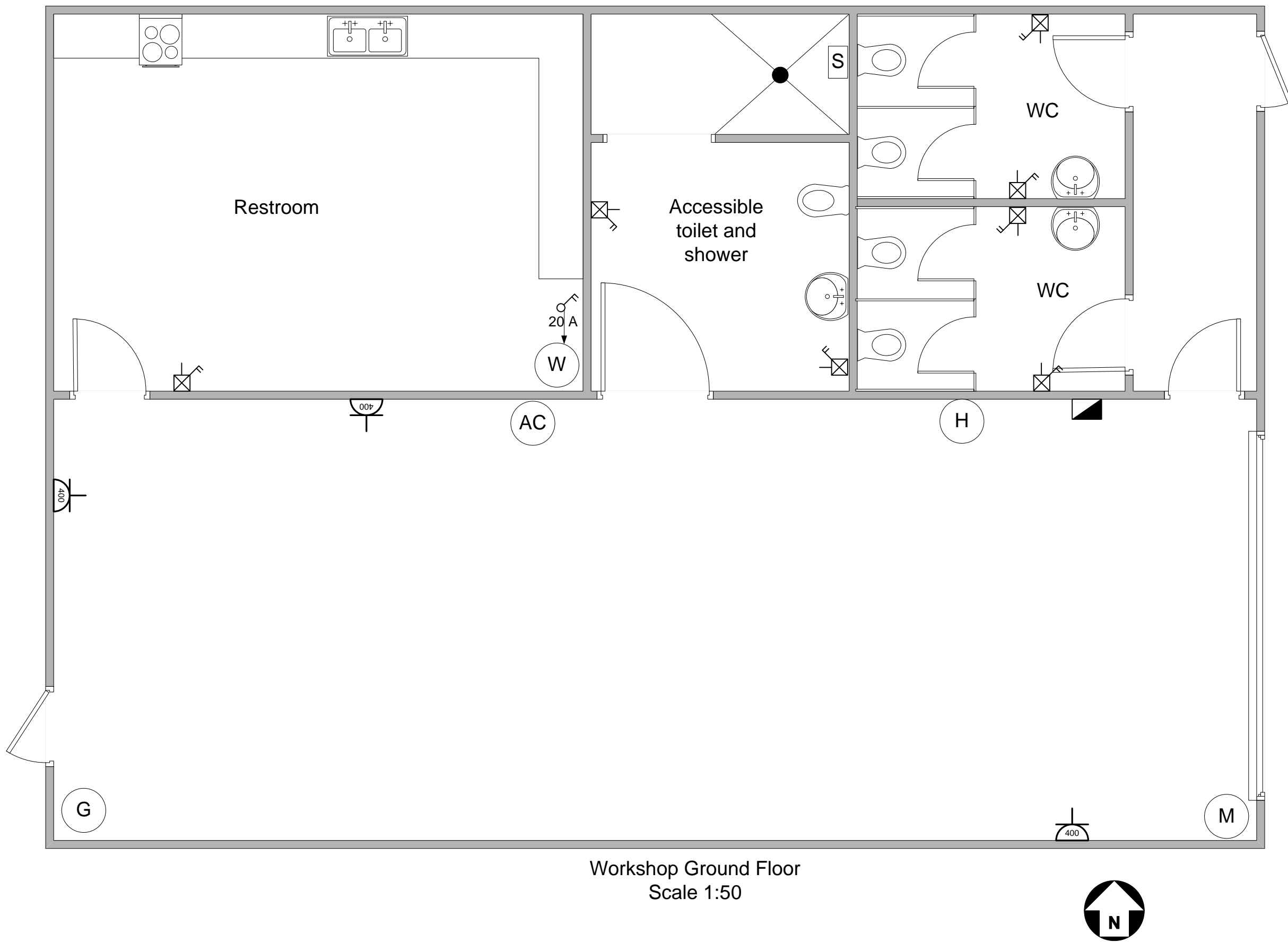
Legend

A. Fixed adaptable box with terminals. SWA to act as supply distribution circuit for DB.

B. 230 V smoke detector.

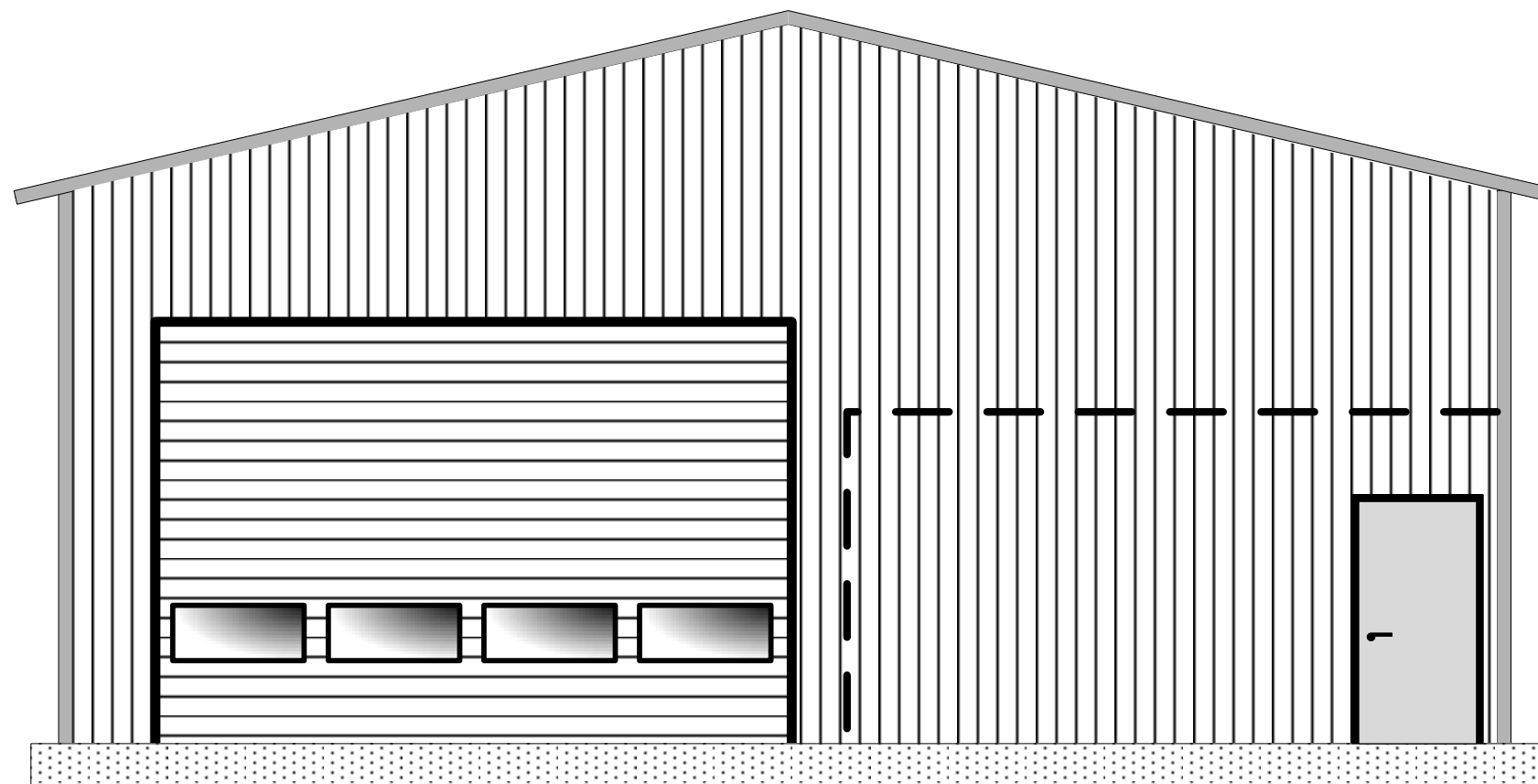
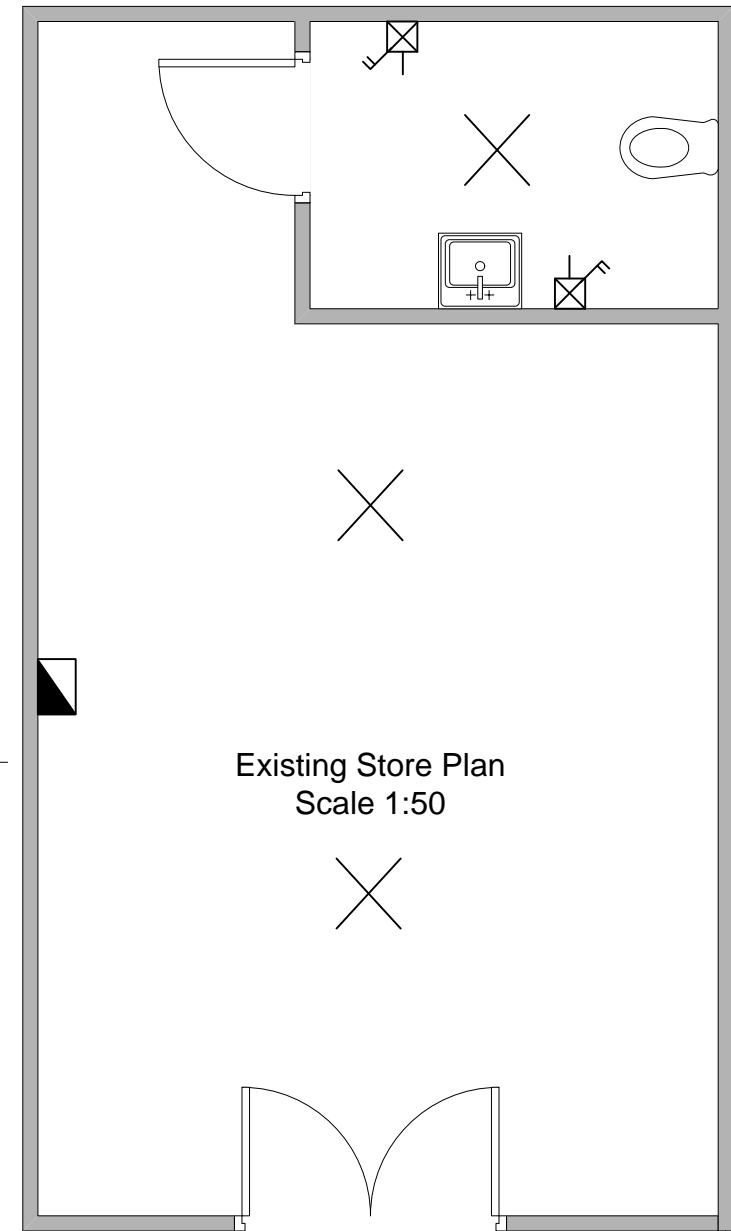
C. Running coupler to connect conduit box to conduit. Conduit box to have a pendant type lampholder mounted on it controlled by the two-way switching. Flexible cable to be terminated by candidate.

D. Adaptable box. Conduit drop below adaptable box to have a bridge set over the PVC cable

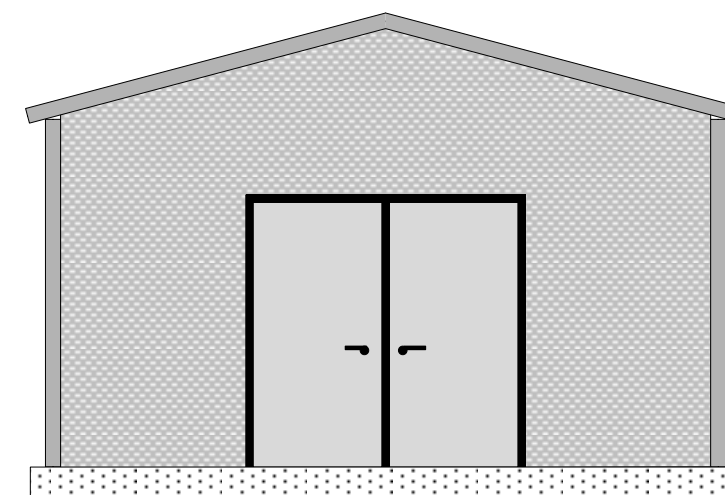


Workshop Ground Floor
Scale 1:50

	3-Phase, 5-Pin 400 V 32 A socket-outlet
	Distribution Board
	9 kW Shower
	5.7 kW Cooker
	20 A DP switch
	Switched fused connection unit with indicator
	Light point
	3 kW immersion water heater
	Motor for roller door
	Overhead gantry crane machinery
	Air compressor
	Workshop heater



Workshop South Elevation
Scale 1:50



Existing Store Elevation
Scale 1:50