

# T Level Technical Qualification in Building Services Engineering for Construction (8710-30)

8710-033 Employer-Set Project  
Brief and resources  
Sample

<b>Version and date</b>	<b>Section</b>	<b>Change detail</b>
1.1 September 2023	Front cover	Rebranded
	Throughout	Footers added
	Back cover	Contact details added

SAMPLE

## Project brief

### The employer

Rich Build PLC is an established building contractor with branches throughout the UK. Each branch works on different types of developments including, new build residential, commercial retail and more.

### The project

Rich Build PLC are preparing a tender submission for the building of a community library. The tender specification includes details on the requirement to include renewable technologies and environmental products as part of the library development.

You are part of the team who are working together to respond to the tender – you will have to research technologies and products and contribute to planning in line with the end client requirements.

An extract of the tender specification, including the relevant sections relating to your part of the project has been provided; this includes site plans, supplier details, budget details, etc.

# Tender specification

## Community library project

### Supplier list

Purchasing technologies directly from manufacturers is preferred, to ensure value for money and inclusion in manufacturer servicing programmes. Potential suppliers include:

- [www.worcester-bosch.co.uk/products/heat-pumps](http://www.worcester-bosch.co.uk/products/heat-pumps)
- [www.vaillant.co.uk/commercial/products/commercial-renewable-systems](http://www.vaillant.co.uk/commercial/products/commercial-renewable-systems)
- [www.gb-sol.co.uk](http://www.gb-sol.co.uk)
- [www.polysolar.co.uk/commercial](http://www.polysolar.co.uk/commercial)
- [www.renewableenergyhub.co.uk/](http://www.renewableenergyhub.co.uk/)
- [www.freerain.co.uk](http://www.freerain.co.uk)
- [www.rainharvesting.co.uk](http://www.rainharvesting.co.uk)

### Building specification/technology requirements

Orientation	South facing
PV system requirements	4kWp System
Solar thermal system requirements	3.6m2 system
Calculated heat pump heat load	9.5kW
Biomass heat output requirements	9.5kW
Rainwater harvesting tank requirements	30,000 litres

To ensure the efficient use of energy, the library should have both SMART heating and SMART lighting controls throughout the building.

The library should include low energy lighting options within the building.

To prevent the wastage of water and to ensure water efficiency throughout the building, the library should incorporate the following water conservation technologies:

- Spray taps
- Low volume flush WC
- Flow reducing valves
- Infrared taps/WC flushing

The library should as far as possible include renewable technologies as part of the finished development, including:

- Water conservation
- Electricity producing technologies
- Heat producing technologies

## Systems budget

Projected system costs based on technology requirements:

Water conservation budget:

- Rainwater harvesting £3800 - £4000

Electricity producing technology budget:

- Solar PV £5800 - £6200

Heat producing technology budget:

- Solar thermal £4500 - £5000
- Heat Pump £10000 - £11000
- Biomass £16000 - £17000

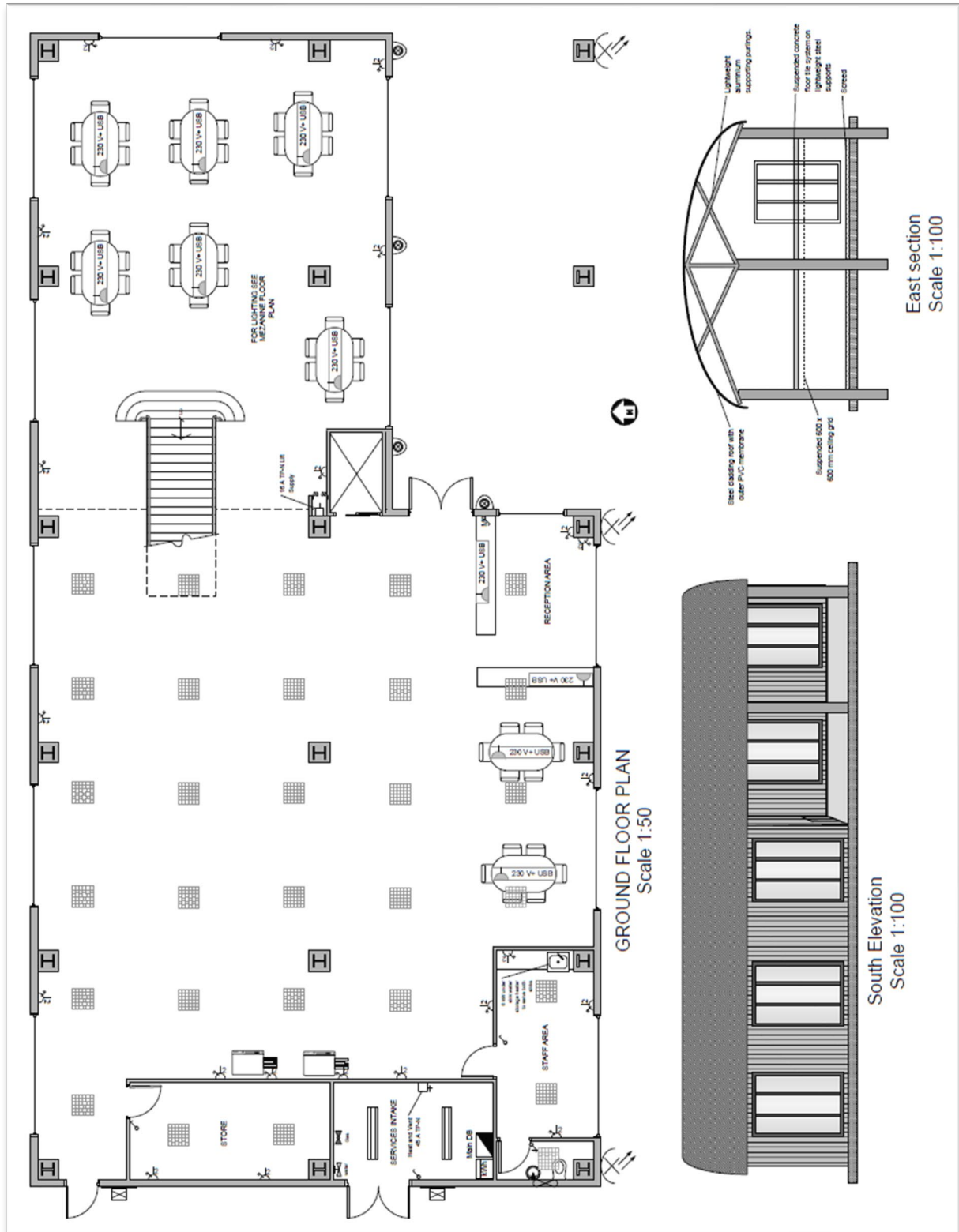
## Duration

Installation of the renewable technologies for the library should take no more than 10 days.

NB - Systems will be commissioned by respective manufacturers', therefore commissioning does not need to be taken into consideration within this 10 day duration.

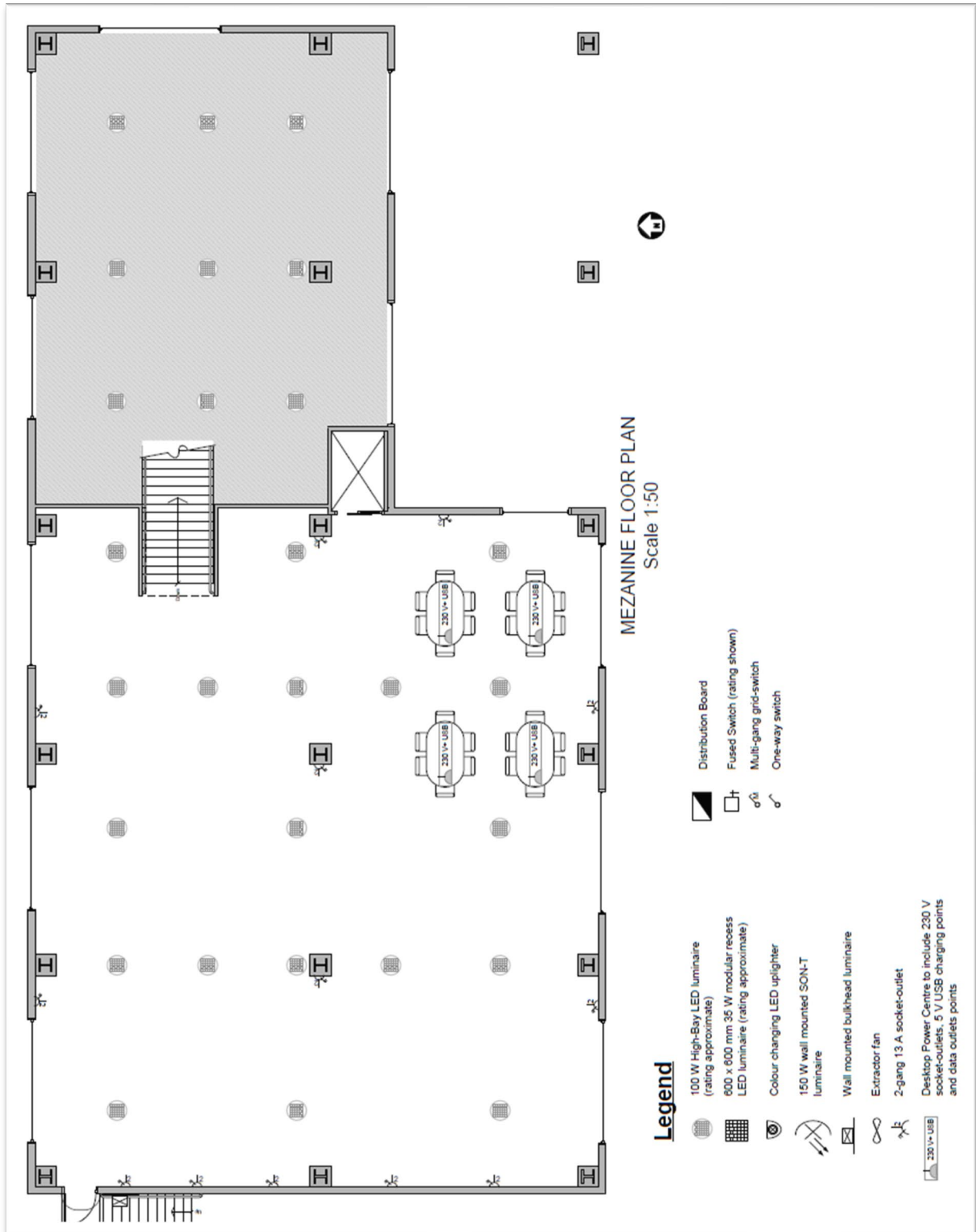
# Drawings

## Site plan <sup>1</sup>



<sup>1</sup> Your tutor can provide full size (A3) copies of site plans as necessary.

Site plan 2



**Legend**

- |  |                                                                                                       |  |                             |
|--|-------------------------------------------------------------------------------------------------------|--|-----------------------------|
|  | 100 W High-Bay LED luminaire (rating approximate)                                                     |  | Distribution Board          |
|  | 600 x 600 mm 35 W modular recess LED luminaire (rating approximate)                                   |  | Fused Switch (rating shown) |
|  | Colour changing LED uplighter                                                                         |  | Multi-gang grid-switch      |
|  | 150 W wall mounted SON-T luminaire                                                                    |  | One-way switch              |
|  | Wall mounted bulkhead luminaire                                                                       |  |                             |
|  | Extractor fan                                                                                         |  |                             |
|  | 2-gang 13 A socket-outlet                                                                             |  |                             |
|  | Desktop Power Centre to include 230 V socket-outlets, 5 V USB charging points and data outlets points |  |                             |
|  |                                                                                                       |  |                             |

## Get in touch

City & Guilds Technicals Quality Team

We are here to answer any queries you may have regarding your T Level Technical Qualification delivery.

Should you require assistance, please contact us using the details below:

T: 0300 303 53 52 (Monday - Friday | 08:30 - 17:00 GMT)

E: [technicals.quality@cityandguilds.com](mailto:technicals.quality@cityandguilds.com)

W: [cityandguilds.com/tlevels](https://www.cityandguilds.com/tlevels)

The T Level is a qualification approved and managed by the Institute for Apprenticeships and Technical Education.

Copyright in this document belongs to, and is used under licence from, the Institute for Apprenticeships and Technical Education, © 2023. 'T-LEVELS' is a registered trademark of the Department for Education. 'T Level' is a registered trademark of the Institute for Apprenticeships and Technical Education. 'Institute for Apprenticeships & Technical Education' and logo are registered trademarks of the Institute for Apprenticeships and Technical Education.

We make every effort to ensure that the information contained in this publication is true and correct at the time of going to press. However, City & Guilds' products and services are subject to continuous development and improvement, and the right is reserved to change products and services from time to time. City & Guilds cannot accept responsibility for any loss or damage arising from the use of information in this publication.

The City & Guilds of London Institute. All rights reserved. City & Guilds is a trademark of the City & Guilds of London Institute, a charity established to promote education and training registered in England & Wales (312832) and Scotland (SC039576). City and Guilds Group Giltspur House, 5–6 Giltspur Street London EC1A 9DE