

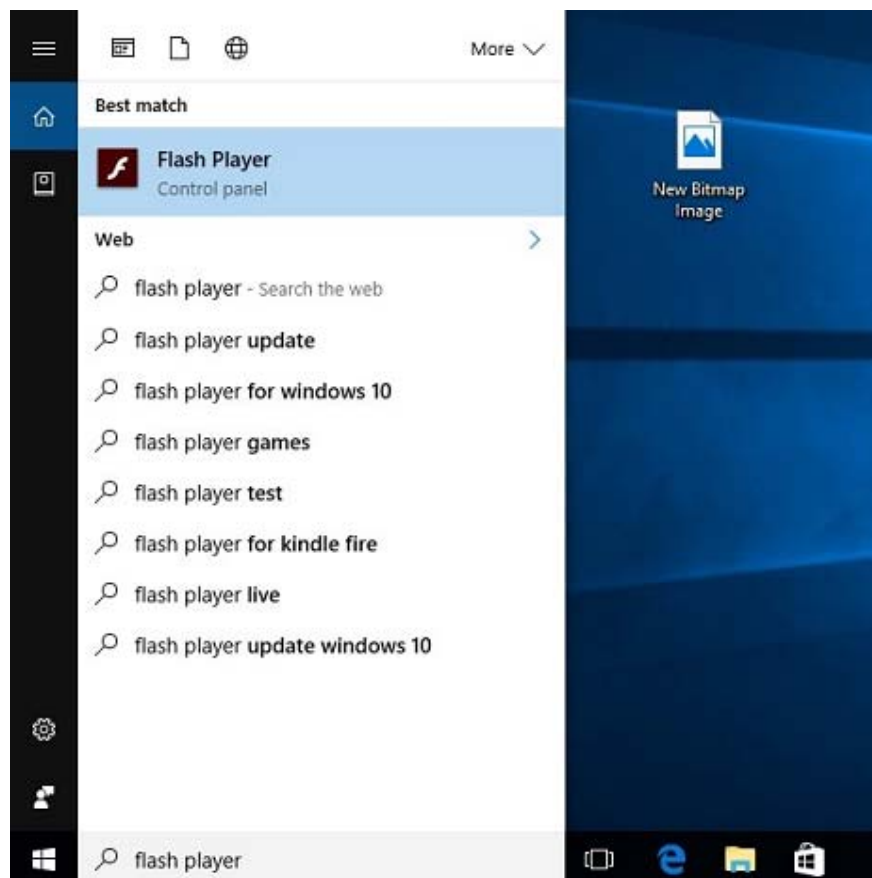
Fix for Sample tests.

Following a recent Flash update there is an issue with opening Sample tests which have been extracted from a zipfile on Windows 10 machines. In order to fix this, you need to add C:\ to the trusted location settings for your flash player.

*Please note: Some organisations may need to add other drives to the trusted location settings in addition to the C:\ drive.*

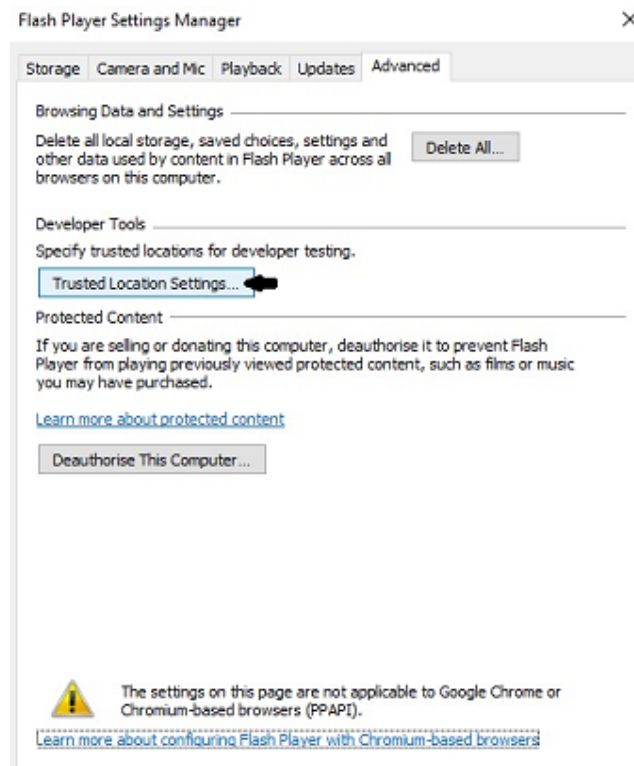
To do this you need to do the following:

Search “flash player” using the search function on your desktop.



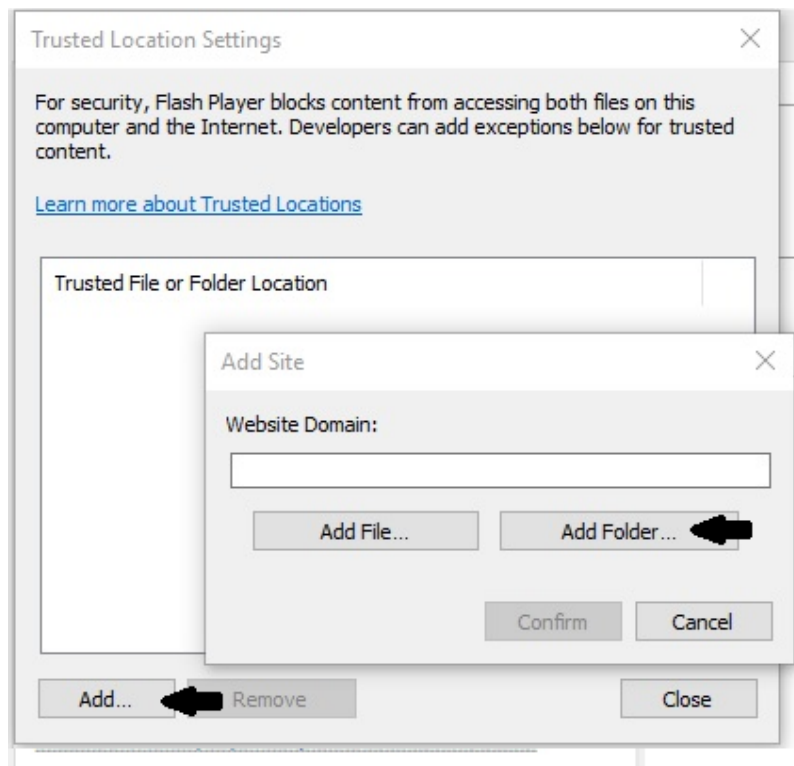
Open flash player

GO to the advanced tab and click “trusted location settings”



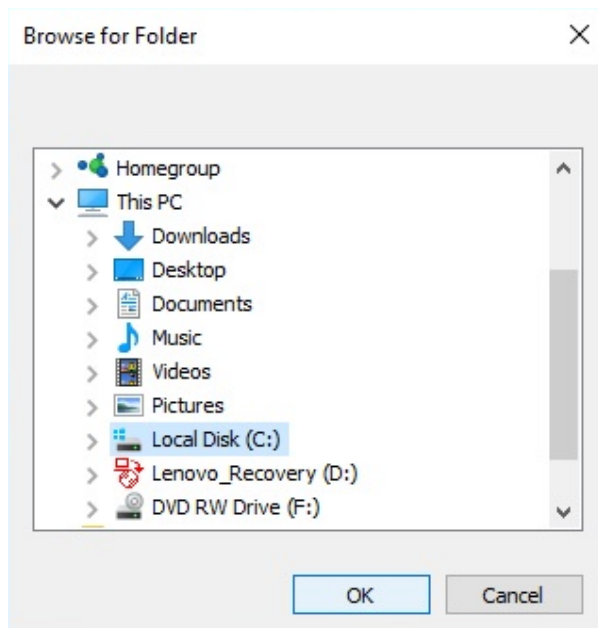
Click add

Click add folder



Select local disk C:// and click ok

Click confirm



Add Site ✕

Website Domain:

C:\

Add File... Add Folder...

Confirm Cancel



Once you have done this, the sample tests will open but only if you open them using internet explorer.

To do this, right click on the index.html file and select open with then choose internet explorer from the list of available browsers

