



301 Medical Terminology

SAMPLE

Test duration: 2 hours

Read the following notes before you answer any questions:

- Attempt all questions
- If you find a question difficult, leave it and return to it later

This paper contains 80 questions. All questions have equal marks.

This question paper is the property of City & Guilds

1. STEM: Which **one** of the following is a prefix that means “blue”?

OPTIONS:

- a. Chromo-
- b. Cyano-
- c. Leuco-
- d. Xantho-

Key: b

LO 1; Topic 1.1

2. STEM: Which **one** of the following word roots refers to the main part of the large intestine?

OPTIONS:

- a. Colo-
- b. Duodeno-
- c. Ileo-
- d. Jejuno-

Key: a

LO 1; Topic 1.1

3. STEM: Which **one** of the following suffixes would refer to an image such as an X-ray?

OPTIONS:

- a. –gram
- b. –graph
- c. –meter
- d. –scope

Key: a

LO 1; Topic 1.1

4. STEM: Which **one** of the following medical procedures does the suffix in the medical term oophorectomy refer to?

OPTIONS:

- a. Incision into
- b. Creating an artificial opening into
- c. Surgical removal of
- d. Repair or

Key: c

LO 1; Topic 1.1

5. STEM: Which **one** of the following conditions is characterised by a **sideways** curvature of the spine?

OPTIONS:

- a. Kyphosis
- b. Lordosis
- c. Scoliosis
- d. Spondylosis

Key: c

LO 1; Topic 1.1 – knowledge

6. STEM: Which **one** of the following word roots is matched with the correct meaning?

Word root	Meaning
-----------	---------

OPTIONS:

- | | |
|--------------|---------|
| a. Albumino- | white |
| b. Kalo- | calcium |
| c. Natro- | sodium |
| d. Melano- | skin |

Key: c

LO 1; Topic 1.1

7. STEM: Which **one** of the following word roots identifies the facial part that has been infected by the piercing?



Image taken from bodypiercingmag.com

OPTIONS:

- a. Cheilo-
- b. Glosso-
- c. Rhino-
- d. Stomato-

Key: c

LO 1; Topic 1.1

8. STEM: In which **one** of the following medical terms does the suffix indicate an immature cell?

OPTIONS:

- a. Chondrocyte
- b. Osteoblast
- c. Osteoclast
- d. Thrombocyte

Key: b

LO 1; Topic 1.1

9. STEM: Which **one** of the following meanings is linked with the correct prefix?

Meaning	Prefix
OPTIONS:	
a. After	para -
b. All	pan-
c. Alongside	peri -
d. Around	post -

Key: b

LO 1; topic 1.1

10. STEM: In which **one** of the following medical terms does the suffix indicate a difficulty in swallowing?

OPTIONS:

- a. Dysphagia
- b. Dysphasia
- c. Dyspnoea
- d. Dysuria

Key: a

LO 1; Topic 1.1

11. STEM: Which **one** of the following is a word root that means “membranes covering the lungs”?

OPTIONS:

- a. Bronchiolo-
- b. Pneumono-
- c. -pnoea
- d. Pleuro-

Key: d

LO1 topic 1.1

12. STEM: Which **one** of the following is the correct **plural** form of the air sacs of the lungs, as shown in Figure X?

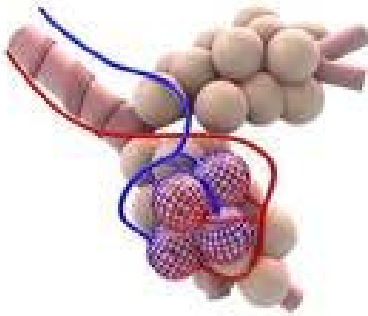


Image taken from www.fotosearch.com

OPTIONS:

- a. Alveola
- b. Alveolae
- c. Alveoles
- d. Alveoli

Key: d

LO1; Topic 1.1

13. STEM: Which **one** of the following medical terms describes the hardening of the wall of an artery by plaque formation?

OPTIONS:

- a. Atherosclerosis
- b. Aortic stenosis
- c. Phlebitis
- d. Arterionecrosis

Key: a

LO 1; Topic 1.2

14. STEM: Which **one** of the following medical conditions involves inflammation of the membranes of the abdominal cavity?

OPTIONS:

- a. Pancreatitis
- b. Pericarditis
- c. Peritonitis
- d. Pharyngitis

Key: c

LO 1; Topic 1.2

15. STEM: Which **one** of the following symptoms is most likely to be associated with ataxia?

OPTIONS:

- a. Lack of coordination of movement
- b. Loss of voice
- c. Red rash
- d. Shortage of red blood cells

Key: a

LO 1; Topic 1.2

16. STEM: Which **two** of the following medical terms are matched with the correct meanings?

Term	Meaning
1. Buccal	Pertaining to the cheek
2. Encephalitis	Inflammation of the skull
3. Oophoropathy	Disease of the eyelid
4. Tympanic	Pertaining to the ear drum

OPTIONS:

- a. 1 and 2
- b. 1 and 3
- c. 1 and 4

d. 2 and 4

Key: c

17. STEM: Which **one** of the following correctly names the **inner lining of the heart**?

OPTIONS:

- a. Endocardium
- b. Myocardium
- c. Pericardium
- d. Septum

Key: a

LO 1 topic 1.2

18. STEM: Hyperhidrosis is characterised by which one of the following symptoms?

OPTIONS:

- a. Excessive growth of body hair
- b. Excessive production of sweat
- c. Build-up of an excess of fluid in a joint
- d. Dehydration

Key: b

LO 1 topic 1.2

19. STEM: Which **one** of the following types of cells would be produced by the process of **haematopoiesis**?

OPTIONS:

- a. Erythrocyte
- b. Hepatocyte
- c. Neurone
- d. Oocyte

Key: a

LO 1; Topics 1.1 and 1.2

20. STEM: Which **two** of the following medical conditions could be treated within the **otorhinolaryngology** department?

1. Blepharitis
2. Otitis media
3. Retinopathy
4. Sinusitis

OPTIONS:

- a. 1 and 2
- b. 1 and 3
- c. 2 and 3
- d. 2 and 4

Key: d

LO 1; Topics 1.1 and 1.2

21. STEM: A patient's case history included the following sentence:

"The patient presented with hypertension, tachycardia, hypertension and mild renal insufficiency."

Which **two** of the following statements correctly describe the patient's condition?

1. Fever
2. Liver disease
3. Low blood pressure
4. Rapid heart rate

OPTIONS;

- a. 1 and 2
- b. 1 and 3
- c. 1 and 4
- d. 3 and 4

Key: c

LO 1; Topic 1.1 and 1.2

22. STEM: Which one of the following processes would normally take place in the female mammary glands following child birth?

- a. Carcinogenesis
- b. Lactogenesis
- c. Osteogenesis
- d. Pyogenesis

Key: b

LO 1; Topic 1.1 and 1.2

23. STEM: The poster below was used to raise public awareness of the key symptoms of a stroke:



Taken from:

http://www.nhs.uk/actfast/documents/76073DL2h0603_A5%20Leaflet_BM_2.pdf

Which **one** of the following medical terms could be used to describe the **weakness or paralysis that occurs on one side of the body** as a result of stroke?

- a. Dysphasia
- b. Hemianopia
- c. Hemiparesis
- d. Tetraplegia

Key: c

LO 1; Topic 1.1 and 1.2

24. STEM: Presenting signs of advanced testicular cancer include haemorrhage, pulmonary metastasis and supraclavicular lymphadenopathy.

Which **one** of the following medical terms is correctly matched with its meaning?

OPTIONS:	Term	Meaning
a.	Haemorrhage	Discharge of blood
b.	Lymphadenopathy	Disease of the lymph node
c.	Pulmonary	Pertaining to the testes
d.	Supraclavicular	Below the collar bone

Key: b

LO1; Topics 1.1 and 1.2

25. STEM: Which **two** of the following would be described as **preventive** medicine?

- 1. Amniocentesis
- 2. Contraception
- 3. Diagnosis
- 4. Prophylaxis

OPTIONS:

- a. 1 and 2
- b. 1 and 3
- c. 2 and 3
- d. 2 and 4

Key: d

LO1; Topics 1.1 and 1.2

26. STEM: Which **two** of the following are **ossicles**?

1. Atlas
2. Epiglottis
3. Incus
4. Stapes

OPTIONS:

- a) 1 and 2
- b) 1 and 3
- c) 2 and 3
- d) 3 and 4

Key: d

LO2; Topic 2.1

27. STEM: Which **one** of the following parts of the digestive system would be investigated using an **ileoscope**?

OPTIONS:

- a. Gullet
- b. Large intestine
- c. Rectum
- d. Small intestine

Key: d

LO 2; topic 2.1

28. STEM: Which **one** of the following is a medical condition in which the blood is unable to clot properly?

OPTIONS:

- a. Anaemia
- b. Haemolytic disease of the newborn
- c. Haemophilia
- d. Leukaemia

Key: c

LO 2; Topic 2.1

29. STEM: Which **one** of the following procedures would be used to **break down a kidney stone**?

OPTIONS:

- a. Lithotripsy
- b. Nephrectomy
- c. Renal dialysis
- d. Urolithiasis

Key: a

LO 2; Topic 2.1

30. STEM: Which **one** of the following procedures would be used to withdraw fluid from around the fetus for prenatal testing?

OPTIONS:

- a. Amniocentesis
- b. Cystocentesis
- c. Pleurocentesis
- d. Lumbar puncture

Key: a

LO2 topic 2.1

31. STEM: Which **one** of the following conditions would be treated by a **corneal** graft?

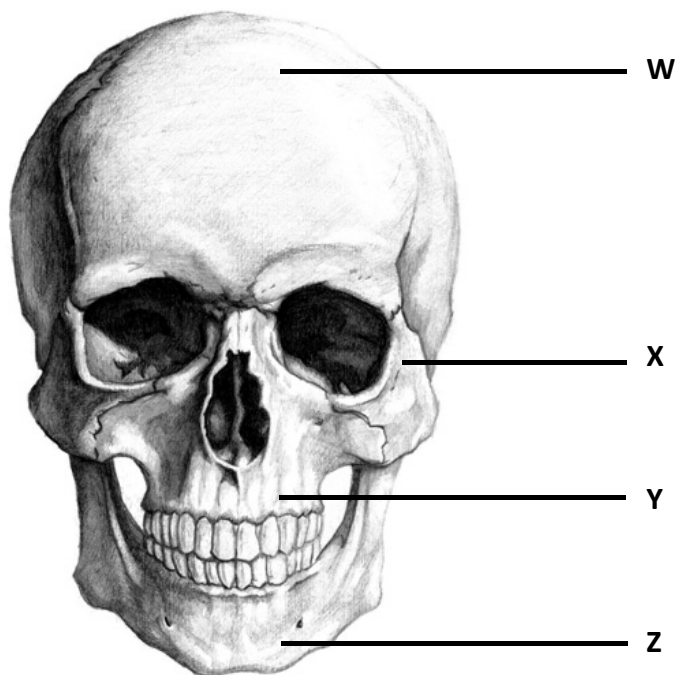
OPTIONS:

- a. Blindness
- b. Burns
- c. Baldness
- d. Heart disease

Key: a

LO 2; Topic 2.1

32. STEM: The image below shows the bones of the human head:



Taken from everymanhybrid.wikia.com

Which **one** of the letters on the diagram represents the **mandible**?

OPTIONS:

- a. W
- b. X
- c. Y
- d. Z

Key: d

LO 2; Topic 2.1

33. STEM: Which **one** of the following is the name of the bone at the bottom of the spine?

OPTIONS:

- a. Acetabulum
- b. Coccyx
- c. Scapula
- d. Tarsal

Key: b

LO 2; Topic 2.2

34. In which one of the following procedures would a prolapse of the vagina be treated by **fixing** it to the abdominal wall?

OPTIONS:

- a. Colpectasis
- b. Colpopexy
- c. Metrorrhexis
- d. Vaginotomy

Key: b

LO 2; Topic 2.1

35. STEM: Which one of the following is the correct name of the type of bone indicated by the letter X in the X-ray image below?

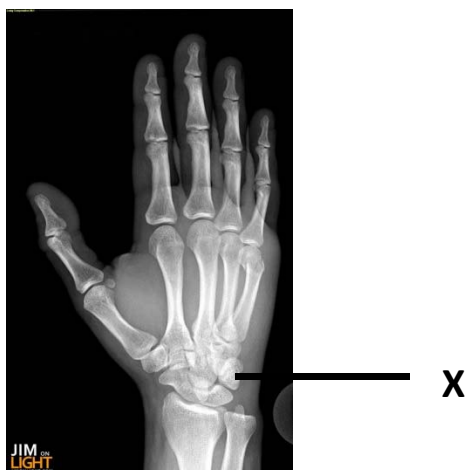


Image taken from www.jimonlight.com

OPTIONS:

- a. Carpals
- b. Metacarpals
- c. Phalanges
- d. Tarsals

Key: a

LO2, topic 2.2

36. STEM: Which **one** of the following organs is associated with the digestive system and produces insulin and digestive enzymes?

OPTIONS:

- a. Gall bladder
- b. Jejunum
- c. Liver
- d. Pancreas

Key: d

LO 2; Topic 2.3

37. STEM: Which one of the following is an organ located just beneath the male bladder and secretes a liquid that makes sperm more motile?

OPTIONS:

- a. Epididymis
- b. Penis
- c. Prostrate
- d. Prostate

Key: d

LO2; Topic 2.1 knowledge

38. STEM: Select which **one** of the following structures would be ligated during a vasectomy:

OPTIONS:

- a. Epididymis
- b. Urethra
- c. Vas deferens
- d. Vena cava

Key: c

LO 2; Topic 2.1

39. Which one of the following is the main vein of the body that carries blood from the head to the heart?

OPTIONS:

- a. Aorta
- b. Inferior vena cava
- c. Left ventricle
- d. Superior vena cava

Key: d

LO 2; Topic 2.3

40. To which one of the following organ systems does the spleen belong?

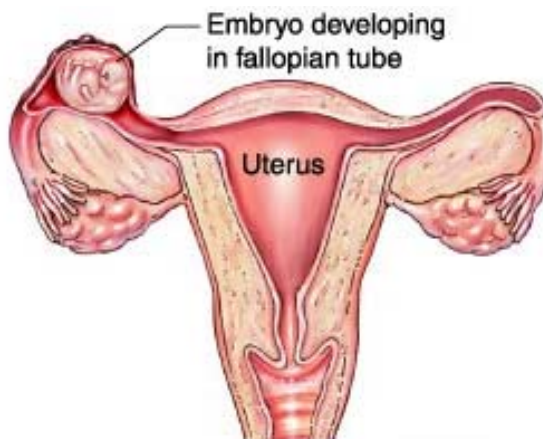
OPTIONS:

- a. Digestive
- b. Endocrine
- c. Lymphatic
- d. Urinary

Key: c

LO 2; Topic 2.3

41. STEM: Which **one** of the following terms best describes the **type** of pregnancy shown in the diagram below?



OPTIONS:

- a. Binovular
- b. Breech
- c. Ectopic
- d. Primigravida

Key: c

LO 2 topic 2.1

42. STEM: The diagram below shows the 9 regions of the abdominal cavity.

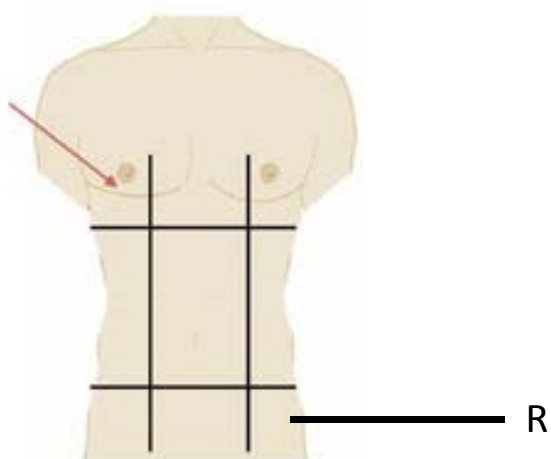


Image taken from www.imgbucket.com

Which **one** of the following is the correct name for the abdominal region indicated by the letter R?

OPTIONS:

- a. Epigastric
- b. Left iliac fossa
- c. Left lumbar
- d. Umbilical

Key: b

LO2 TOPIC 2.1

43. Which one of the following diseases is correctly matched with the hormone implicated in the condition?

Disease	Hormone
a. Acromegaly	Growth hormone
b. Diabetes insipidus	Insulin
c. Hypoparathyroidism	Thyroxine
d. Infertility	Adrenaline

Key: a

LO 2 topic 2.1

44. STEM: Which **two** of the following conditions are conditions that are involved in **COPD** (chronic obstructive pulmonary disease)?

- 1. Chronic bronchitis
- 2. Constipation
- 3. Embolism
- 4. Emphysema

OPTIONS:

- a. 1 and 3
- b. 1 and 4
- c. 2 and 4
- d. 3 and 4

Key: b

LO 2; Topic 2.1

45. Which one of the following muscles would contract to bring about the extension of the lower arm?

OPTIONS:

- a. Biceps
- b. Gluteals
- c. Quadriceps
- d. Triceps

Key: c

LO 2; Topic 2.1

46. STEM: Which **one** of the following correctly identifies the bones that meet at the knee joint?

OPTIONS:

- a. Femur, fibula and tibia
- b. Femur, radius and ulna
- c. Humerus, tibia and fibula
- d. Patella, radius and ulna

Key: a

LO 2; Topic 2.2

47. Which one of the following secretions is made by the liver, stored in the gall bladder and secreted into the duodenum?

- a. Amylase
- b. Bile
- c. Lipase
- d. Protease

Key: b

LO2 topic 2.3 - understanding

48. Which **one** of the following names in the correct order the organs through which air would flow from the environment into the lungs during inspiration?

OPTIONS:

- a. Larynx, pharynx, trachea
- b. Pharynx, alveolus, bronchiole
- c. Pharynx, larynx, bronchus
- d. Trachea, bronchiole, bronchus

Key: c

LO 2; Topic 2.3

49. STEM: Which **two** of the following organs are involved in producing hormones?

- 1. Larynx
- 2. Ovaries
- 3. Pancreas
- 4. Skin

OPTIONS:

- a. 1 and 2
- b. 2 and 3
- c. 2 and 4
- d. 3 and 4

Key: b

LO 2; Topic 2.3

50. STEM: Which **two** of the following organ systems are directly involved in controlling the responses of homeostasis?

- 1. Central nervous system
- 2. Cardiovascular
- 3. Digestive
- 4. Endocrine

OPTIONS:

- a. 1 and 2
- b. 1 and 3

- c. 1 and 4
- d. 2 and 4

Key: c

LO 2; Topic 2.3

51. STEM: Which **one** of the following is a form of medical image in which radioisotopes are used to diagnose disease?

OPTIONS:

- a. Magnetic resonance imaging
- b. Positron emission tomography
- c. Ultrasound
- d. Nuclear medicine

Key: d

LO3 topic 3.1 and 3.2

52. STEM: In which **one** of the following departments of the Pathology service would biopsy tissue be investigated in order to diagnose cancer?

OPTIONS:

- a. Microbiology
- b. Cytology
- c. Histology
- d. Virology

Key: c

Lo3 topic 3.1 and 3.3

53. STEM: The image below shows a child having their body temperature measured.



Image taken from: www.wisegeek.com

Which **one** of the following terms correctly identifies the location in which the temperature is being measured?

- a. Axillary
- b. Aural
- c. Oral
- d. Rectal

Key: b

LO 3 topic 3.1

54. STEM: Which **one** of the following is a sphygmomanometer used to measure?

OPTIONS:

- a. Blood pressure
- b. Blood oxygen concentration
- c. Body mass index
- d. Breathing rate

Key: a

LO3 Topic 3.1

55. STEM: Which **one** of the following tests would be used to measure blood clotting time?

OPTIONS:

- a. Hb
- b. INR
- c. RBC
- d. CRP

Key: b

LO 3; Topic 3.2

56. STEM: Which **two** of the following diagnostic test abbreviations are matched with their correct meaning?

Test	Meaning
1. AFP	Alpha feto-protein
2. BUN	Blood urea nitrogen
3. LDL	Liver disease levels
4. PCV	Polycystic variable

OPTIONS:

- a. 1 and 2
- b. 1 and 3
- c. 2 and 3
- d. 3 and 4

Key: a

LO 3; topic 3.2

57. STEM: Which **one** of the following tests is carried out in a Diabetes Clinic to show the amount of glucose bound to haemoglobin

OPTIONS:

- a. FBS
- b. GI
- c. GTT
- d. HbA1c

Key: d

LO 3; topic 3.2 – knowledge

58. STEM: Which **one** of the following electrolytes is represented by the abbreviation K?

OPTIONS:

- a. Calcium
- b. Phosphate
- c. Potassium
- d. Sodium

Key: c

LO 3; topic 3.2

59. STEM: Which **two** of the following tests are matched correctly with their abbreviations?

- | | |
|-------------------------|------|
| 1. Bone density scan | DEXA |
| 2. Cervical smear test | PAP |
| 3. Cervicovaginal scan | CVS |
| 4. Electroencephalogram | ECG |

OPTIONS:

- a. 1 and 2
- b. 2 and 3
- c. 2 and 4
- d. 3 and 4

Key: a

LO 3; topic 3.2

60. STEM: Which **one** of the following medical specialities is involved in the holistic provision of pain relief and psychological support to best manage the symptoms of a patient with an incurable or terminal disease?

OPTIONS:

- a. Geriatrics
- b. Oncology
- c. Orthoptics
- d. Palliative care

Key: d

LO3 topic 3.3

61. STEM: In which **one** of the following departments would hormonal disorders such as diabetes be investigated?

OPTIONS:

- a. Urology
- b. Paediatrics
- c. Pharmacology
- d. Endocrinology

Key: d

LO3 topic 3.3

62. STEM: Which **one** of the following medical specialities is involved in carrying out weight reduction surgery?

OPTIONS:

- a. Aetiology
- b. Bariatrics
- c. Gastroenterology
- d. Hepatology

Key: b

LO3 topic 3.3

63. STEM: The diagram below shows the digestive system. Which **one** of the letters on the diagram represents the organ of the digestive system that would be investigated using a barium enema?

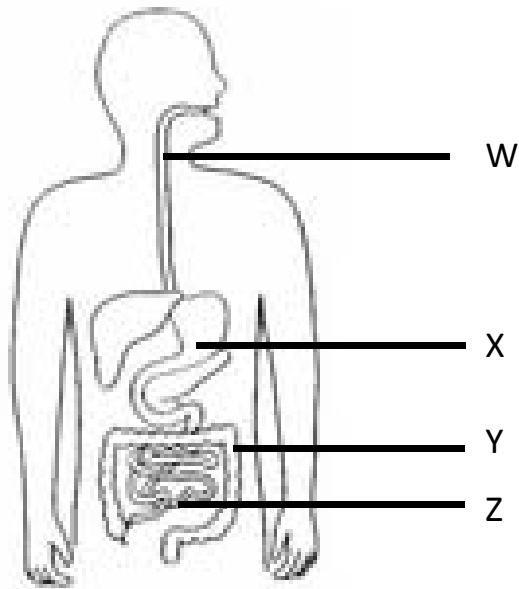


Image taken from:

<https://www.tes.co.uk/teaching-resource/blank-digestive-system-6146222>

OPTIONS:

- a. W
- b. X
- c. Y
- d. Z

Key: c

LO3 Topic 3.1

64. STEM: Which **one** of the following procedures might be carried out to collect a sample of cerebrospinal fluid in order to diagnose meningitis?

OPTIONS:

- a. Amniocentesis
- b. Cordocentesis
- c. Lumbar puncture
- d. RGP

Key: c

LO3 topic 3.1 and 3.2

65. STEM: Which of the following conditions might be investigated within the Psychiatry department?

- 1. Agoraphobia
- 2. Anxiety
- 3. Bipolar disorder
- 4. Haemophilia

OPTIONS:

- a. 1 only
- b. 1 and 2
- c. 1, 2 and 3
- d. All the above.

Key: c

LO3 topics 3.1 and 3.3

66. STEM: Coeliac disease is diagnosed by determining the level of specific antibodies in the blood. Which **one** of the following is another name for **antibody**?

OPTIONS:

- a. Glycogen
- b. Haemoglobin
- c. Immunoglobulin
- d. Lymph

Key: c

LO 3; Topic 3.1 and 3.2

67. STEM: Which **one** of the following would be an effect of an **antipyretic** drug?

OPTIONS:

- a. Relieve pain
- b. Reduce flatulence
- c. Induce sleep
- d. Reduce fever

Key: d

LO4 Topic 4.2

68. STEM: Which **one** of the following abbreviations would indicate that a medicine needs to be taken **after a meal**?

OPTIONS:

- a. ac
- b. om
- c. pc
- d. stat

Key: c

LO4 Topic 4.1

69. STEM: Which **one** of the following abbreviations is **not** used in the legal classification of drugs?

OPTIONS:

- a. CD
- b. GSL
- c. POM
- d. SI

Key: d

LO4 Topic 4.1

70. STEM: the MMR vaccination is used to protect babies against measles and which two other infections?

- a. Meningitis C and Rotavirus
- b. Meningitis C and Rubella
- c. Mumps and Rotavirus
- d. Mumps and Rubella

Key: d

LO4 Topic 4.1

71. STEM: Which **two** of the following types of drugs could be used to treat a patient with anxiety?

- 1. Anaesthetic
- 2. Anxiolytic
- 3. Laxative
- 4. Tranquiliser

OPTIONS:

- a. 1 and 4
- b. 2 and 3
- c. 2 and 4
- d. 3 and 4

Key: c

LO4 Topic 4.2

72. STEM: Which **two** of the following types of drugs could be used to reduce high blood pressure?

1. ACE inhibitor
2. Anti-emetic
3. Beta-blocker
4. Proton pump inhibitor

OPTIONS:

- a. 1 and 2
- b. 1 and 3
- c. 2 and 3
- d. 3 and 4

Key: b

LO4 Topic 4.2

73. STEM: Which **one** of the following combinations of infections will the **DTaP** vaccination provide immunity against?

OPTIONS:

- a. Diphtheria, tetanus and pertussis
- b. Diphtheria, typhoid and polio
- c. Diphtheria, tetanus and pneumococcus
- d. Dysentery, typhoid and polio

Key: a

LO4 Topic 4.1

74. STEM: The doctor writes the following information on a patient's prescription:

*"One decongestant **troch**, **qqh** for a maximum of 5 days"*

Which **two** of the following instructions should the pharmacist write on the medicine bottle for the patient to follow?

1. Tablet
2. Lozenge
3. Every four hours
4. Four times a day

OPTIONS:

- a. 1 and 3
- b. 1 and 4
- c. 2 and 3
- d. 2 and 4

Key: c

LO4 Topic 4.1 - knowledge

75. STEM: A patient is being treated using pessaries for a fungal infection of the vagina. Which of the following abbreviations could be used to describe their treatment?

1. Antifungal
2. PV
3. POC
4. IPV

OPTIONS:

- a. 1 only
- b. 1 and 2
- c. 1, 2 and 3
- d. All of the above

Key: b

LO4 Topic 4.1 and 4.2

76. STEM: A patient is attending a smoking cessation clinic and is prescribed 24 hour transdermal patches, each of which contains 35mg nicotine to be absorbed into the body through the skin.

Which **one** of the following statements refers correctly to this prescribed medicine?

- a. This treatment is a form of HRT.
- b. One patch will provide 35 micrograms of nicotine.
- c. The prescription will state “od”.
- d. The nicotine is being delivered as a suppository.

Key: c

Topic 4.1

77. STEM The medical qualification abbreviation **FRCOG** is used to identify a person that is a

OPTIONS:

- a. Fellow of the Royal College of General Practitioners
- b. Fellow of the Royal College of Gynaecologists
- c. Fellow of the Royal College of Gastroenterology
- d. Fellow of the Royal College of Obstetricians and Gynaecologists

Key: d

Topic 5.1

78. STEM: What medical qualification does the abbreviation **MChir** stand for?

OPTIONS:

- a. Master of Surgery
- b. Master of Chiropody
- c. Member of the Institute of Chiropractic
- d. Member of the Royal College of Physicians and Surgeons

Key: a

Topic 5.1

79. STEM: Which of the following medical abbreviations indicate a **Doctor of Medicine**?

1. BM
2. CM
3. DM
4. MD

OPTIONS:

- a. 1 and 3
- b. 2 and 3
- c. 3 and 4
- d. 3 only

Key: c

Topic 5.1

80. STEM: Which **one** of the following medical qualification abbreviations might be used to indicate a **Doctor of Dental Surgery**?

OPTIONS:

- a. DS
- b. DDS
- c. MRCD
- d. PhD

Key: b

Topic 5.1