

6715-02 Level 2 Diploma in Stonemasonry

August 2014 Version 1.0

PRACTICAL TASK MANUAL

Contents

Candidate details	2
Unit assessment overview	3
Practical task completion record	3
Instructions to candidates	5
Unit 268 Setting out and templet making for stonemasonry components	6
Task 1 Set out different arch forms	6
Task 2 Set out proportional reduction	9
Task 3 Set out full size details for hood stop	11
Task 4 Produce templets and moulds for a hood stop	13
Unit 269 Working stonemasonry components	17
Task 1 Work a hood stop	17
Unit 270 Fixing stonemasonry components	21
Task 1 Set out and fix a semi-circular arch	21
Drawings and diagrams	24
Figure 1: Moulded cornice	24
Figure 2: Hood mould section	25
Figure 3: Hood mould face	26
Figure 4: Full arch	27
Figure 5: Semi-circular arch	28

Candidate details



This *Practical task manual* is a record of your achievement in practical assessments. You must keep it in good condition and it must be stored in a safe place by your Assessor.

Please fill in all of your details before you carry out any assessments.

Candidate Details

Surname		Forename(s)	
---------	--	-------------	--

City & Guilds enrolment number	
--------------------------------	--

Centre Details

Name		Centre No	
------	--	-----------	--

I understand the requirements of the qualification and that all the work towards the assessments must be my own.

Candidate signature	
----------------------------	--

Assessor name (please print)		Signed	
--	--	--------	--

Date	
------	--

Unit assessment overview

Practical task completion record

To be completed by Assessor:

For each task, the points for each grade are
 Pass = 1, Merit = 2, and Distinction = 3 points.

Conversion chart	
Average	Overall Grade
1 – 1.5	Pass
1.6 – 2.5	Merit
2.6 – 3	Distinction

†All tasks must be passed for the unit to be achieved.

Unit 268 Setting out and templet making for stonemasonry components

Task	Grade for task†	Points (graded tasks)
1. Set out different arch forms	P / M / D / X	
2. Set out proportional reduction	P / M / D / X	
3. Set out full size details for hood stop	P / M / D / X	
4. Produce templets and moulds for a hood stop	P / M / D / X	
Internally marked questions	P / X	
Total		
Divide total points from graded tasks by number of graded tasks		÷4
Average =		
Overall grade (see conversion chart)		

Assessor signature and date:

Unit 269 Working stonemasonry components

Task	Grade for task†
1. Work a hood stop	P / M / D / X
Internally marked questions	P / X
Overall grade	

Assessor signature and date:

Unit 270 Fixing stonemasonry components

Task		Grade for task†
1. Set out and fix a semi-circular arch		P / M / D / X
Internally marked questions		P / X
Assessor signature and date:	Overall grade	

Unit 271 Principles of architectural heritage, conservation and restoration

Task		Grade for task†
Internally marked questions		P / X
Assessor signature and date:	Overall grade	

Instructions to candidates

About this document

This *Practical task manual* contains all of the practical assessment for the 6715-02 Level 2 Diploma in Stonemasonry.

Practical tasks

These tasks let you show your practical skills and are graded pass, merit or distinction. These tasks will be assessed by your assessor watching how you carry out the tasks and checking your final pieces of work.

Before you carry out the task you will be told how it will be assessed and you should read the observation checklist at the end of each task so you know what you need to do to get each grade.

You can ask your assessor for help in understanding the task instructions, but all of the work must be your own.

Health and safety

You must use safe working practices at all times.

You are responsible for your own safety and the safety of others. If you behave in an unsafe way, you will be stopped and given a warning. If you do not meet all of the Health and Safety requirements, the assessment will be stopped. Your assessor will not be able to let you try the task again until they are sure you can work safely.

Time considerations

Each task shows how long it is likely to take. This is for guidance and so you can plan your work. If you have a good reason for needing more time you must explain this to your assessor as soon as possible so they can decide whether you can have more time.

Security

Where an assignment is taken over more than one session, all documentation, paperwork and work products must be labelled carefully with your name and kept securely at the centre. Your assessor will give you directions about how to leave your work.

Opportunities to repeat tasks

The tasks are 'end tests' so you will only be asked to take the assessment when you have had the chance to do all of the learning and practice you need. You will be able to try the whole task again if you do not pass, but you will not be able to take the assessment again just to try to get a better grade.

Feedback

As well as telling you the result for the task, your assessor will give you feedback. They will give you a feedback sheet with details of what you could do to improve, and also what you did well. This will help you to prepare for other assessments or to retake the assessment if you need to.

Unit 268 Setting out and templet making for stonemasonry components

Task 1 Set out different arch forms

Task coversheet

Expected time	2 hours
Task instructions	<p>In this task you will be required to:</p> <ul style="list-style-type: none"> • set out a segmental arch: <ul style="list-style-type: none"> ○ prepare A4 drawing page ○ scale: 1:10 ○ span: 1200 mm ○ rise: 300 mm ○ extrados: +215 mm ○ arch to be divided into eight equally-sized voussoirs plus keystone • set out a lancet arch: <ul style="list-style-type: none"> ○ prepare A4 drawing page ○ scale: 1:10 ○ span: 1100 mm ○ rise: 1300 mm ○ extrados: +215 mm ○ arch to be divided into ten equally-sized voussoirs plus keystone • set out a three-centred arch: <ul style="list-style-type: none"> ○ prepare A4 drawing page ○ scale 1:10 ○ span: 1200 mm ○ rise: 350 mm ○ extrados: +215 mm ○ arch to be divided into eight equally-sized voussoirs plus keystone.
Diagrams	n/a

Observation checklist

AC	The candidate has	Pass	Merit	Distinction
	set out a segmental arch to include:			
2.6	<ul style="list-style-type: none"> • clean drawing page prepared with border, legend, title, scale, date, revision, name 	<input type="checkbox"/>		
2.8	<ul style="list-style-type: none"> • accurate scaling 	<input type="checkbox"/> Correct on 3rd attempt	<input type="checkbox"/> Correct on 2nd attempt	<input type="checkbox"/> Correct on 1st attempt
2.1, 2.2, 2.3, 2.4, 2.5, 2.6, 2.8	<ul style="list-style-type: none"> • accurately drawn arch, showing all construction lines 	<input type="checkbox"/> Correct on 3rd attempt	<input type="checkbox"/> Correct on 2nd attempt	<input type="checkbox"/> Correct on 1st attempt

AC	The candidate has	Pass	Merit	Distinction
2.6, 2.8	<ul style="list-style-type: none"> accurate dimensions 	<input type="checkbox"/> Correct on 3rd attempt	<input type="checkbox"/> Correct on 2nd attempt	<input type="checkbox"/> Correct on 1st attempt
2.2, 2.3, 2.5, 2.6	<ul style="list-style-type: none"> accurately set out voussoirs and keystone 	<input type="checkbox"/> Correct on 3rd attempt	<input type="checkbox"/> Correct on 2nd attempt	<input type="checkbox"/> Correct on 1st attempt
	set out a lancet arch to include:			
2.6	<ul style="list-style-type: none"> clean drawing page prepared with border, legend, title, scale, date, revision, name 	<input type="checkbox"/>		
2.8	<ul style="list-style-type: none"> accurate scaling 	<input type="checkbox"/> Correct on 3rd attempt	<input type="checkbox"/> Correct on 2nd attempt	<input type="checkbox"/> Correct on 1st attempt
2.1, 2.2, 2.3, 2.4, 2.5, 2.6, 2.8	<ul style="list-style-type: none"> accurately drawn arch, showing all construction lines 	<input type="checkbox"/> Correct on 3rd attempt	<input type="checkbox"/> Correct on 2nd attempt	<input type="checkbox"/> Correct on 1st attempt
2.6, 2.8	<ul style="list-style-type: none"> accurate dimensions 	<input type="checkbox"/> Correct on 3rd attempt	<input type="checkbox"/> Correct on 2nd attempt	<input type="checkbox"/> Correct on 1st attempt
2.2, 2.3, 2.5, 2.6	<ul style="list-style-type: none"> accurately set out voussoirs and keystone 	<input type="checkbox"/> Correct on 3rd attempt	<input type="checkbox"/> Correct on 2nd attempt	<input type="checkbox"/> Correct on 1st attempt
	set out a three-centred arch to include:			
2.6	<ul style="list-style-type: none"> clean drawing page prepared with border, legend, title, scale, date, revision, name 	<input type="checkbox"/>		
2.8	<ul style="list-style-type: none"> accurate scaling 	<input type="checkbox"/> Correct on 3rd attempt	<input type="checkbox"/> Correct on 2nd attempt	<input type="checkbox"/> Correct on 1st attempt
2.1, 2.2, 2.3, 2.4, 2.5, 2.6, 2.8	<ul style="list-style-type: none"> accurately drawn arch, showing all construction lines 	<input type="checkbox"/> Correct on 3rd attempt	<input type="checkbox"/> Correct on 2nd attempt	<input type="checkbox"/> Correct on 1st attempt
2.6, 2.8	<ul style="list-style-type: none"> accurate dimensions 	<input type="checkbox"/> Correct on 3rd attempt	<input type="checkbox"/> Correct on 2nd attempt	<input type="checkbox"/> Correct on 1st attempt
2.2, 2.3, 2.5, 2.6	<ul style="list-style-type: none"> accurately set out voussoirs and keystone. 	<input type="checkbox"/> Correct on 3rd attempt	<input type="checkbox"/> Correct on 2nd attempt	<input type="checkbox"/> Correct on 1st attempt

Task grading rules	Task grade:
To achieve a pass : <ul style="list-style-type: none"> • all pass criteria must be met. 	
To achieve a merit : <ul style="list-style-type: none"> • a minimum of 8/12 merit criteria must be met, and; • all the remaining criteria must be achieved to at least a pass standard, and; • candidates must not exceed the expected task time by more than 50%. 	
To achieve a distinction : <ul style="list-style-type: none"> • a minimum of 8/12 distinction criteria must be met, and; • the remaining graded criteria must be achieved to a merit standard, and; • all the non-graded criteria must be achieved to a pass standard, and; • candidates must not exceed the expected task time by more than 25%. 	
Assessor Name	
Assessor Signature	
Date	

Unit 268 Setting out and templet making for stonemasonry components

Task 2 Set out proportional reduction

Task coversheet

Expected time	2.5 hours
Task instructions	In this task you will be required to: <ul style="list-style-type: none"> • prepare A3 drawing page • set out full size drawing of cornice • set out proportional reduction (by 25%) of cornice • annotate reduced section with new dimensions.
Diagrams	Figure 1: Moulded cornice, see page 24

Observation checklist

AC	The candidate has	Pass	Merit	Distinction
2.12	produced a clean drawing page prepared with border, legend, title, scale, date, revision, name	<input type="checkbox"/>		
	set out full size drawing, ensuring:			
2.2, 2.9	<ul style="list-style-type: none"> • accurate dimensions 	<input type="checkbox"/> Correct on 3rd attempt	<input type="checkbox"/> Correct on 2nd attempt	<input type="checkbox"/> Correct on 1st attempt
2.1, 2.2, 2.5, 2.9	<ul style="list-style-type: none"> • accurate setting out of mould details 	<input type="checkbox"/> Correct on 3rd attempt	<input type="checkbox"/> Correct on 2nd attempt	<input type="checkbox"/> Correct on 1st attempt
	set out proportional reduction, ensuring:			
2.8, 2.9, 2.12	<ul style="list-style-type: none"> • accurate scale (reduction by 25%) 	<input type="checkbox"/> Correct on 3rd attempt	<input type="checkbox"/> Correct on 2nd attempt	<input type="checkbox"/> Correct on 1st attempt
2.8, 2.9, 2.12	<ul style="list-style-type: none"> • accurate dimensions 	<input type="checkbox"/> Correct on 3rd attempt	<input type="checkbox"/> Correct on 2nd attempt	<input type="checkbox"/> Correct on 1st attempt
2.1, 2.2, 2.4, 2.5, 2.9, 2.12	<ul style="list-style-type: none"> • accurate setting out of mould details 	<input type="checkbox"/> Correct on 3rd attempt	<input type="checkbox"/> Correct on 2nd attempt	<input type="checkbox"/> Correct on 1st attempt
2.2, 2.4, 2.8, 2.12	<ul style="list-style-type: none"> • visible construction lines. 	<input type="checkbox"/>		

Task grading rules	Task grade:
To achieve a pass : <ul style="list-style-type: none"> • all pass criteria must be met. 	
To achieve a merit : <ul style="list-style-type: none"> • a minimum of 4/5 merit criteria must be met, and; • all the remaining criteria must be achieved to at least a pass standard, and; • candidates must not exceed the expected task time by more than 50%. 	
To achieve a distinction : <ul style="list-style-type: none"> • a minimum of 4/5 distinction criteria must be met, and; • the remaining graded criteria must be achieved to a merit standard, and; • all the non-graded criteria must be achieved to a pass standard, and; • candidates must not exceed the expected task time by more than 25%. 	
Assessor Name	
Assessor Signature	
Date	

Unit 268 Setting out and templet making for stonemasonry components

Task 3 Set out full size details for hood stop

Task coversheet

Expected time	2.5 hours
Task instructions	In this task you will be required to: <ul style="list-style-type: none"> • interpret information from drawings • set out full size details from drawings • complete a job card.
Diagrams	Figure 2: Hood stop section, see page 25 Figure 3: Hood stop face, see page 26 Figure 4: Full arch, see page 27

Observation checklist

AC	The candidate has	Pass	Merit	Distinction
2.2, 2.9	produced a full size section	<input type="checkbox"/> Correct on 3rd attempt	<input type="checkbox"/> Correct on 2nd attempt	<input type="checkbox"/> Correct on 1st attempt
2.4, 2.5, 2.9	set out segmental curved weathering	<input type="checkbox"/> Correct on 3rd attempt	<input type="checkbox"/> Correct on 2nd attempt	<input type="checkbox"/> Correct on 1st attempt
2.9	set out nosing	<input type="checkbox"/> Correct on 3rd attempt	<input type="checkbox"/> Correct on 2nd attempt	<input type="checkbox"/> Correct on 1st attempt
2.3, 2.9	set out elliptical scotia	<input type="checkbox"/> Correct on 3rd attempt	<input type="checkbox"/> Correct on 2nd attempt	<input type="checkbox"/> Correct on 1st attempt
2.5, 2.9	set out torus	<input type="checkbox"/> Correct on 3rd attempt	<input type="checkbox"/> Correct on 2nd attempt	<input type="checkbox"/> Correct on 1st attempt
2.9	set out quirk	<input type="checkbox"/> Correct on 3rd attempt	<input type="checkbox"/> Correct on 2nd attempt	<input type="checkbox"/> Correct on 1st attempt
2.2, 2.6, 2.11	set out face mould	<input type="checkbox"/> Correct on 3rd attempt	<input type="checkbox"/> Correct on 2nd attempt	<input type="checkbox"/> Correct on 1st attempt
2.7	completed a job card with required information and scale sketch	<input type="checkbox"/>		

AC	The candidate has	Pass	Merit	Distinction
2.10	drawn fixing slot in correct location.	<input type="checkbox"/> Correct on 3rd attempt	<input type="checkbox"/> Correct on 2nd attempt	<input type="checkbox"/> Correct on 1st attempt

Task grading rules	Task grade:
To achieve a pass : <ul style="list-style-type: none"> • all pass criteria must be met. 	
To achieve a merit : <ul style="list-style-type: none"> • a minimum of 5/8 merit criteria must be met, and; • all the remaining criteria must be achieved to at least a pass standard, and; • candidates must not exceed the expected task time by more than 50%. 	
To achieve a distinction : <ul style="list-style-type: none"> • a minimum of 5/8 distinction criteria must be met, and; • the remaining graded criteria must be achieved to a merit standard, and; • all the non-graded criteria must be achieved to a pass standard, and; • candidates must not exceed the expected task time by more than 25%. 	
Assessor Name	
Assessor Signature	
Date	

Unit 268 Setting out and templet making for stonemasonry components

Task 4 Produce templets and moulds for a hood stop

Task coversheet

Expected time	3 hours
Task instructions	<p>In this task you will be required to:</p> <ul style="list-style-type: none"> • interpret information from a job card • complete a method statement and risk assessment • complete a resource checklist • transfer details from drawings • produce templets and moulds • keep a clean work area • work safely at all times.
Diagrams	<p>Figure 2: Hood stop section, see page 25 Figure 3: Hood stop face, see page 26 Figure 4: Full arch, see page 27</p>

Observation checklist

AC	The candidate has	Pass	Merit	Distinction
4.2	completed a method statement for making templets and moulds	<input type="checkbox"/>		
4.3	completed a risk assessment for making templets and moulds	<input type="checkbox"/>		
4.1, 4.4, 4.5, 4.6	completed a resource checklist for making templets and moulds	<input type="checkbox"/>		
4.1, 4.7, 4.8	produced zinc section square	<input type="checkbox"/> Correct on 3rd attempt	<input type="checkbox"/> Correct on 2nd attempt	<input type="checkbox"/> Correct on 1st attempt
	produced zinc section to correct dimensions	<input type="checkbox"/> Correct on 3rd attempt	<input type="checkbox"/> Correct on 2nd attempt	<input type="checkbox"/> Correct on 1st attempt
	produced section details in zinc:			
	<ul style="list-style-type: none"> • segmental curved weathering 	<input type="checkbox"/> Correct on 3rd attempt	<input type="checkbox"/> Correct on 2nd attempt	<input type="checkbox"/> Correct on 1st attempt

AC	The candidate has	Pass	Merit	Distinction
	<ul style="list-style-type: none"> nosing 	<input type="checkbox"/> Correct on 3rd attempt	<input type="checkbox"/> Correct on 2nd attempt	<input type="checkbox"/> Correct on 1st attempt
	<ul style="list-style-type: none"> elliptical scotia 	<input type="checkbox"/> Correct on 3rd attempt	<input type="checkbox"/> Correct on 2nd attempt	<input type="checkbox"/> Correct on 1st attempt
	<ul style="list-style-type: none"> torus 	<input type="checkbox"/> Correct on 3rd attempt	<input type="checkbox"/> Correct on 2nd attempt	<input type="checkbox"/> Correct on 1st attempt
	<ul style="list-style-type: none"> quirk 	<input type="checkbox"/> Correct on 3rd attempt	<input type="checkbox"/> Correct on 2nd attempt	<input type="checkbox"/> Correct on 1st attempt
	<ul style="list-style-type: none"> fixing slot 	<input type="checkbox"/> Correct on 3rd attempt	<input type="checkbox"/> Correct on 2nd attempt	<input type="checkbox"/> Correct on 1st attempt
	produced reverse for elliptical scotia	<input type="checkbox"/> Correct on 3rd attempt	<input type="checkbox"/> Correct on 2nd attempt	<input type="checkbox"/> Correct on 1st attempt
	produced reverse for segmental curved weathering	<input type="checkbox"/> Correct on 3rd attempt	<input type="checkbox"/> Correct on 2nd attempt	<input type="checkbox"/> Correct on 1st attempt
	produced reverse for torus	<input type="checkbox"/> Correct on 3rd attempt	<input type="checkbox"/> Correct on 2nd attempt	<input type="checkbox"/> Correct on 1st attempt
	produced plastic face mould square	<input type="checkbox"/> Correct on 3rd attempt	<input type="checkbox"/> Correct on 2nd attempt	<input type="checkbox"/> Correct on 1st attempt
	produced plastic face mould to correct dimensions	<input type="checkbox"/> Correct on 3rd attempt	<input type="checkbox"/> Correct on 2nd attempt	<input type="checkbox"/> Correct on 1st attempt
	produced face mould details in:			
	<ul style="list-style-type: none"> section lines 	<input type="checkbox"/> Correct on 3rd attempt	<input type="checkbox"/> Correct on 2nd attempt	<input type="checkbox"/> Correct on 1st attempt
	<ul style="list-style-type: none"> mitre lines (external and internal) 	<input type="checkbox"/> Correct on 3rd attempt	<input type="checkbox"/> Correct on 2nd attempt	<input type="checkbox"/> Correct on 1st attempt

AC	The candidate has	Pass	Merit	Distinction
	<ul style="list-style-type: none"> return 	<input type="checkbox"/> Correct on 3rd attempt	<input type="checkbox"/> Correct on 2nd attempt	<input type="checkbox"/> Correct on 1st attempt
	<ul style="list-style-type: none"> ashlar stop 	<input type="checkbox"/> Correct on 3rd attempt	<input type="checkbox"/> Correct on 2nd attempt	<input type="checkbox"/> Correct on 1st attempt
	<ul style="list-style-type: none"> fixing slot 	<input type="checkbox"/> Correct on 3rd attempt	<input type="checkbox"/> Correct on 2nd attempt	<input type="checkbox"/> Correct on 1st attempt
4.1, 4.9	annotated templates with necessary information on the:			
	<ul style="list-style-type: none"> section 	<input type="checkbox"/> Correct on 3rd attempt	<input type="checkbox"/> Correct on 2nd attempt	<input type="checkbox"/> Correct on 1st attempt
	<ul style="list-style-type: none"> reverses 	<input type="checkbox"/> Correct on 3rd attempt	<input type="checkbox"/> Correct on 2nd attempt	<input type="checkbox"/> Correct on 1st attempt
	<ul style="list-style-type: none"> face mould 	<input type="checkbox"/> Correct on 3rd attempt	<input type="checkbox"/> Correct on 2nd attempt	<input type="checkbox"/> Correct on 1st attempt
4.10	stored templates correctly while not in use	<input type="checkbox"/>		
4.11	disposed of waste materials appropriately	<input type="checkbox"/>		
4.4, 4.12, 4.13	followed current environmental and relevant health and safety regulations	<input type="checkbox"/>		
	used tools, equipment and materials in a safe manner	<input type="checkbox"/>		
	used and maintained PPE as appropriate	<input type="checkbox"/>		
	maintained a clean and safe working area	<input type="checkbox"/>		
	cleaned and returned all tools and equipment once the task is complete.	<input type="checkbox"/>		

Task grading rules	Task grade:
To achieve a pass : <ul style="list-style-type: none"> • all pass criteria must be met. 	
To achieve a merit : <ul style="list-style-type: none"> • a minimum of 15/21 merit criteria must be met, and; • all the remaining criteria must be achieved to at least a pass standard, and; • candidates must not exceed the expected task time by more than 50%. 	
To achieve a distinction : <ul style="list-style-type: none"> • a minimum of 15/21 distinction criteria must be met, and; • the remaining graded criteria must be achieved to a merit standard, and; • all the non-graded criteria must be achieved to a pass standard, and; • candidates must not exceed the expected task time by more than 25%. 	
Assessor Name	
Assessor Signature	
Date	

Unit 269 Working stonemasonry components

Task 1 Work a hood stop

Task coversheet

Expected time	Between 20 and 28 hours (dependant on stone type and natural variations)
Task instructions	<p>In this task you will be required to:</p> <ul style="list-style-type: none"> • interpret information from a job card, drawings and templets • complete a method statement and risk assessment • complete a resource checklist • work a hood stop • keep a clean work area • work safely at all times.
Diagrams	<p>Figure 2: Hood stop section, see page 25 Figure 3: Hood stop face, see page 26 Figure 4: Full arch, see page 27</p>

Observation checklist

AC	The candidate has	Pass	Merit	Distinction
2.1	interpreted information from a job card, drawings and specifications	<input type="checkbox"/>		
2.2	completed a method statement for working a hood stop	<input type="checkbox"/>		
2.3	completed a risk assessment for working a hood stop	<input type="checkbox"/>		
2.4, 2.5, 2.6	completed a resource checklist	<input type="checkbox"/>		
2.5	selected a stone as specified by assessor	<input type="checkbox"/>		
2.7	ensured the stone is true, out of twist, square and of correct dimensions (± 1 mm over 300 mm)	<input type="checkbox"/>		
2.6, 2.7	where applicable, identified any faults in the stone and recorded on the resource checklist and/or reported to the assessor	<input type="checkbox"/>		
2.8, 2.10	clearly marked bedding plane on the back of the stone	<input type="checkbox"/>		
	marked up the stone from templets	<input type="checkbox"/>		
	run lines through with pencil and scribe where appropriate	<input type="checkbox"/>		
	worked position and angle of top bed joint correctly	<input type="checkbox"/>		

AC	The candidate has	Pass	Merit	Distinction
	ensured face of ashlar stop square, clean and true	<input type="checkbox"/> no more than 3 errors	<input type="checkbox"/> no more than 2 errors	<input type="checkbox"/> no errors
	worked extrados to ashlar stop	<input type="checkbox"/> no more than 3 errors	<input type="checkbox"/> no more than 2 errors	<input type="checkbox"/> no errors
	cut worked details to include:			
	<ul style="list-style-type: none"> segmental weathering on curved face 	<input type="checkbox"/> no more than 3 errors	<input type="checkbox"/> no more than 2 errors	<input type="checkbox"/> no errors
	<ul style="list-style-type: none"> segmental weathering on straight face 	<input type="checkbox"/> no more than 3 errors	<input type="checkbox"/> no more than 2 errors	<input type="checkbox"/> no errors
	<ul style="list-style-type: none"> segmental weathering on return to stop 	<input type="checkbox"/> no more than 3 errors	<input type="checkbox"/> no more than 2 errors	<input type="checkbox"/> no errors
	<ul style="list-style-type: none"> nosing to curved face 	<input type="checkbox"/> no more than 3 errors	<input type="checkbox"/> no more than 2 errors	<input type="checkbox"/> no errors
	<ul style="list-style-type: none"> nosing to straight face 	<input type="checkbox"/> no more than 3 errors	<input type="checkbox"/> no more than 2 errors	<input type="checkbox"/> no errors
	<ul style="list-style-type: none"> nosing to return to stop 	<input type="checkbox"/> no more than 3 errors	<input type="checkbox"/> no more than 2 errors	<input type="checkbox"/> no errors
	<ul style="list-style-type: none"> elliptical scotia on curved face 	<input type="checkbox"/> no more than 3 errors	<input type="checkbox"/> no more than 2 errors	<input type="checkbox"/> no errors
	<ul style="list-style-type: none"> elliptical scotia on straight face 	<input type="checkbox"/> no more than 3 errors	<input type="checkbox"/> no more than 2 errors	<input type="checkbox"/> no errors
	<ul style="list-style-type: none"> elliptical scotia on return to stop 	<input type="checkbox"/> no more than 3 errors	<input type="checkbox"/> no more than 2 errors	<input type="checkbox"/> no errors
	<ul style="list-style-type: none"> torus on curved face 	<input type="checkbox"/> no more than 3 errors	<input type="checkbox"/> no more than 2 errors	<input type="checkbox"/> no errors

AC	The candidate has	Pass	Merit	Distinction
	<ul style="list-style-type: none"> torus on straight face 	<input type="checkbox"/> no more than 3 errors	<input type="checkbox"/> no more than 2 errors	<input type="checkbox"/> no errors
	<ul style="list-style-type: none"> torus on return to stop 	<input type="checkbox"/> no more than 3 errors	<input type="checkbox"/> no more than 2 errors	<input type="checkbox"/> no errors
	<ul style="list-style-type: none"> quirk on curved face 	<input type="checkbox"/> no more than 3 errors	<input type="checkbox"/> no more than 2 errors	<input type="checkbox"/> no errors
	<ul style="list-style-type: none"> quirk on straight face 	<input type="checkbox"/> no more than 3 errors	<input type="checkbox"/> no more than 2 errors	<input type="checkbox"/> no errors
	<ul style="list-style-type: none"> quirk on return to stop 	<input type="checkbox"/> no more than 3 errors	<input type="checkbox"/> no more than 2 errors	<input type="checkbox"/> no errors
	<ul style="list-style-type: none"> fixing slot, drilled for dowel 	<input type="checkbox"/>		
	ensured internal mitre lines clean and true	<input type="checkbox"/> no more than 3 errors	<input type="checkbox"/> no more than 2 errors	<input type="checkbox"/> no errors
	ensured external mitre lines clean and true	<input type="checkbox"/> no more than 3 errors	<input type="checkbox"/> no more than 2 errors	<input type="checkbox"/> no errors
2.9	produced at least two different surface finishes (from tooled, chiselled, rubbed or dragged) to all visible surfaces	<input type="checkbox"/>		
2.4, 2.11, 2.12, 2.13	followed current environmental and relevant health and safety regulations	<input type="checkbox"/>		
	used tools, equipment and materials in a safe manner	<input type="checkbox"/>		
	used and maintained PPE as appropriate	<input type="checkbox"/>		
	maintained a clean and safe working area	<input type="checkbox"/>		
	cleaned and returned all tools and equipment once the task is complete.	<input type="checkbox"/>		

Task grading rules	Task grade:
To achieve a pass : <ul style="list-style-type: none"> • all pass criteria must be met. 	
To achieve a merit : <ul style="list-style-type: none"> • a minimum of 11/19 merit criteria must be met, and; • all the remaining criteria must be achieved to at least a pass standard, and; • candidates must not exceed the expected task time by more than 50%. 	
To achieve a distinction : <ul style="list-style-type: none"> • a minimum of 11/19 distinction criteria must be met, and; • the remaining graded criteria must be achieved to a merit standard, and; • all the non-graded criteria must be achieved to a pass standard, and; • candidates must not exceed the expected task time by more than 25%. 	
Assessor Name	
Assessor Signature	
Date	

Unit 270 Fixing stonemasonry components

Task 1 Set out and fix a semi-circular arch

Task coversheet

Expected time	18 hours (not including curing time for mortar)
Task instructions	<p>In this task you will be required to:</p> <ul style="list-style-type: none"> • interpret information from documents • complete a method statement and risk assessment • complete a resource checklist • set out for fixing a semi-circular arch • fix semi-circular arch • keep a clean work area • work safely at all times.
Diagrams	Figure 5: Semi-circular arch, see page 28

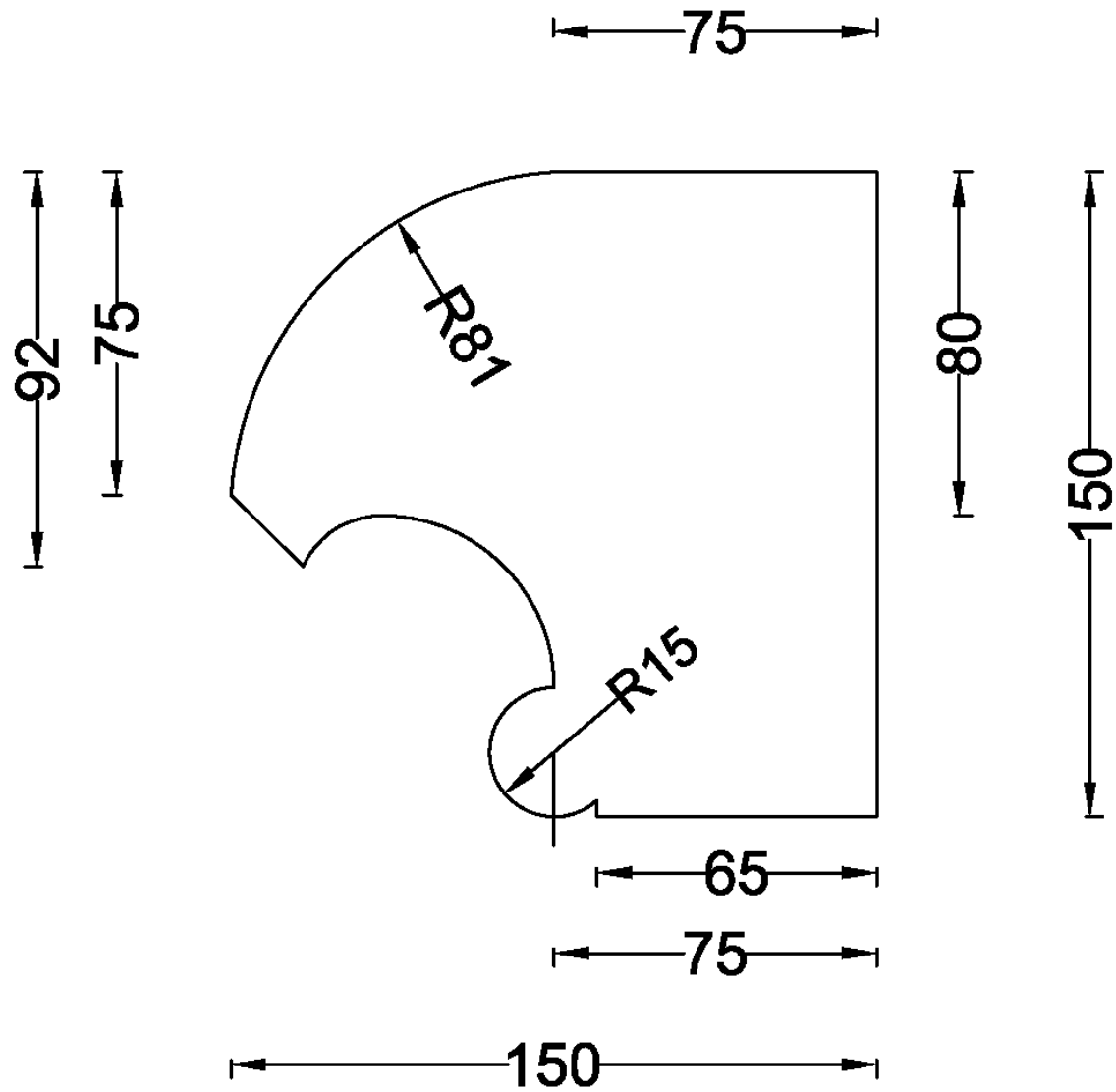
Observation checklist

AC	The candidate has	Pass	Merit	Distinction
2.1, 4.1, 6.1	interpreted drawings, specifications and manufacturer's documentation required for fixing stone on site, and confirmed understanding of the task	<input type="checkbox"/>		
2.2	completed a method statement for fixing stonemasonry components	<input type="checkbox"/>		
2.3	completed a risk assessment for fixing stonemasonry components	<input type="checkbox"/>		
2.4, 2.5, 4.2	completed a resource checklist	<input type="checkbox"/>		
4.3	accurately set out opening from the centre line	<input type="checkbox"/>		
4.4	ensured arch set out to correct datum level	<input type="checkbox"/>		
4.5	ensured dimensional accuracy of centre	<input type="checkbox"/>		
4.6	ensured arch centre is plumb and level	<input type="checkbox"/>		
6.2	gauged and mixed mortar for fixing arch	<input type="checkbox"/>		
6.3, 6.4	fixed semi-circular arch:			
	• with correct span (± 1 mm)	<input type="checkbox"/>		
	• with correct rise (± 1 mm)	<input type="checkbox"/>		
	• with correctly sized radiating joints (± 1 mm)	<input type="checkbox"/>		
	• to ensure front face of jambs are in plane	<input type="checkbox"/> ± 2 mm	<input type="checkbox"/> ± 1 mm	<input type="checkbox"/> ± 0 mm

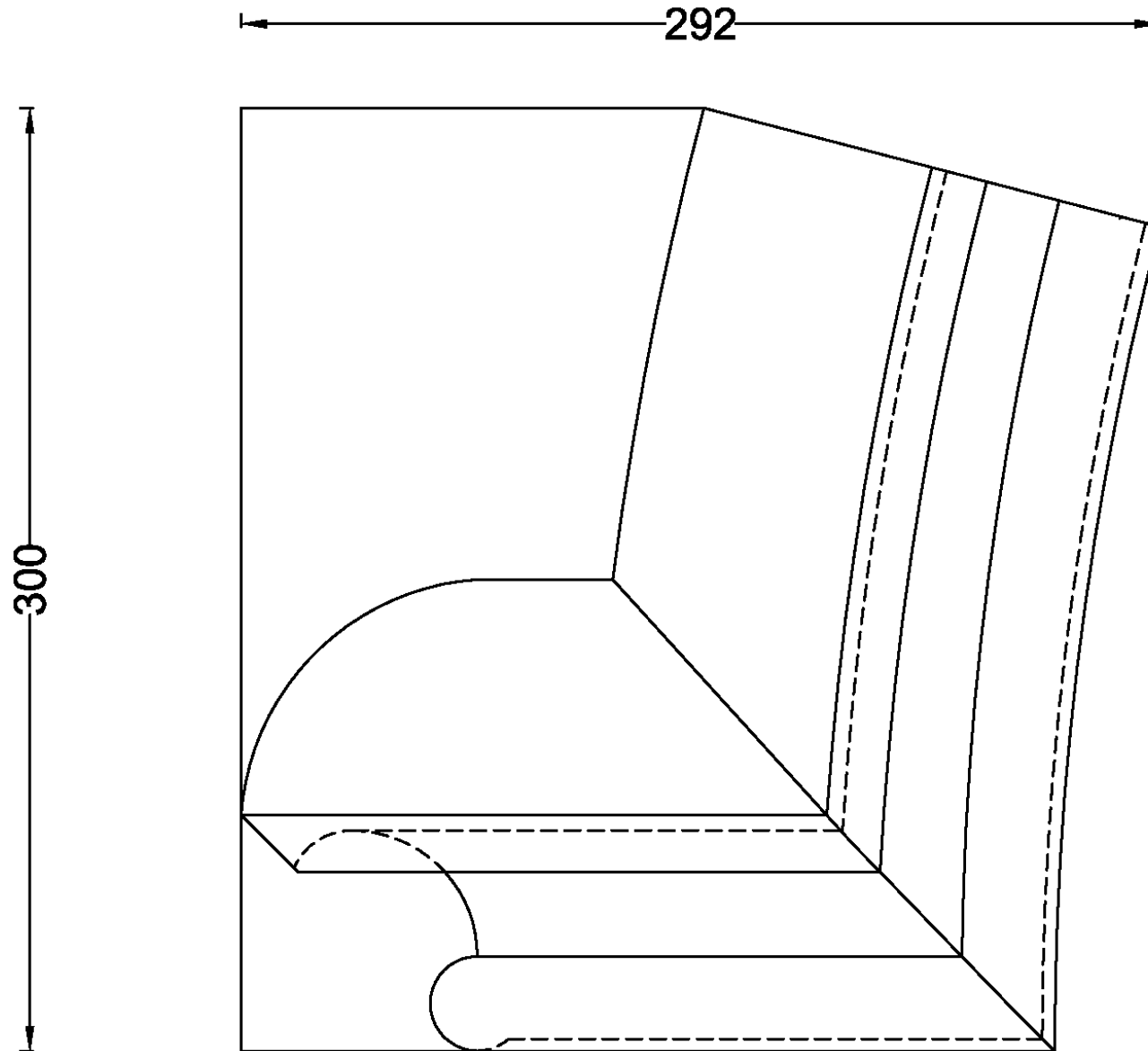
AC	The candidate has	Pass	Merit	Distinction
	<ul style="list-style-type: none"> to ensure front face of arch is in plane 	<input type="checkbox"/> ± 2 mm	<input type="checkbox"/> ± 1 mm	<input type="checkbox"/> ± 0 mm
	<ul style="list-style-type: none"> plumb at point A 	<input type="checkbox"/> ± 2 mm	<input type="checkbox"/> ± 1 mm	<input type="checkbox"/> ± 0 mm
	<ul style="list-style-type: none"> plumb at point B 	<input type="checkbox"/> ± 2 mm	<input type="checkbox"/> ± 1 mm	<input type="checkbox"/> ± 0 mm
	<ul style="list-style-type: none"> plumb at point C 	<input type="checkbox"/> ± 2 mm	<input type="checkbox"/> ± 1 mm	<input type="checkbox"/> ± 0 mm
	<ul style="list-style-type: none"> to ensure level across top bed of voussoirs 9 and 10 	<input type="checkbox"/> ± 2 mm	<input type="checkbox"/> ± 1 mm	<input type="checkbox"/> ± 0 mm
	<ul style="list-style-type: none"> using dowels, joggles and grouting 	<input type="checkbox"/>		
	<ul style="list-style-type: none"> and applied flush joint finishes to arch stones 	<input type="checkbox"/>		
2.6, 4.7, 6.5, 6.6, 6.7	followed current environmental and relevant health and safety regulations	<input type="checkbox"/>		
	used tools, equipment and materials in a safe manner	<input type="checkbox"/>		
	used and maintained PPE as appropriate	<input type="checkbox"/>		
	maintained a clean and safe working area	<input type="checkbox"/>		
	cleaned and returned all tools and equipment once the task is complete.	<input type="checkbox"/>		

Task grading rules	Task grade:
To achieve a pass : <ul style="list-style-type: none"> • all pass criteria must be met. 	
To achieve a merit : <ul style="list-style-type: none"> • a minimum of 4/6 merit criteria must be met, and; • all the remaining criteria must be achieved to at least a pass standard, and; • candidates must not exceed the expected task time by more than 50%. 	
To achieve a distinction : <ul style="list-style-type: none"> • a minimum of 4/6 distinction criteria must be met, and; • the remaining graded criteria must be achieved to a merit standard, and; • all the non-graded criteria must be achieved to a pass standard, and; • candidates must not exceed the expected task time by more than 25%. 	
Assessor Name	
Assessor Signature	
Date	

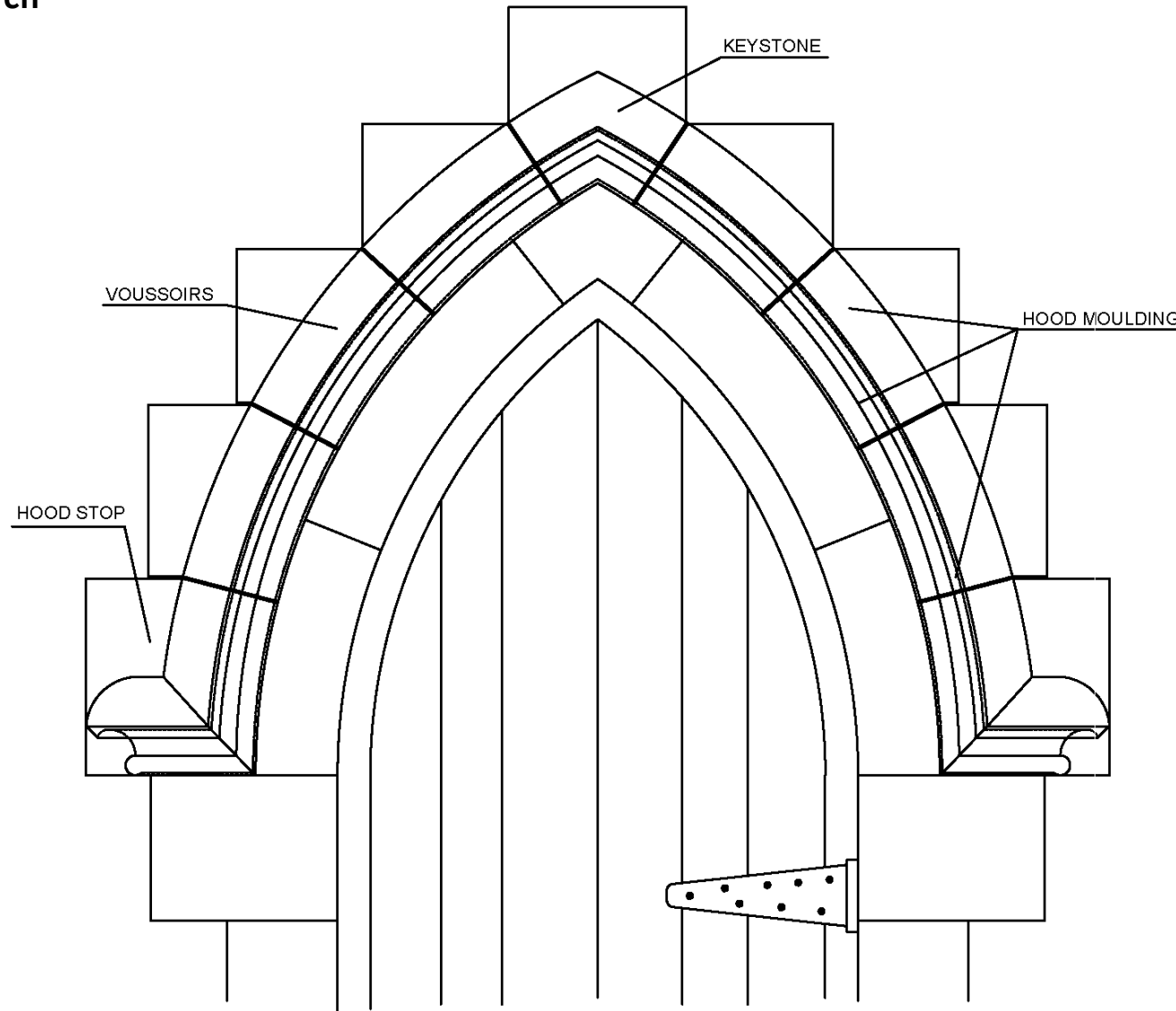
Drawings and diagrams
Figure 2: Hood mould section



Drawings and diagrams
Figure 3: Hood mould face

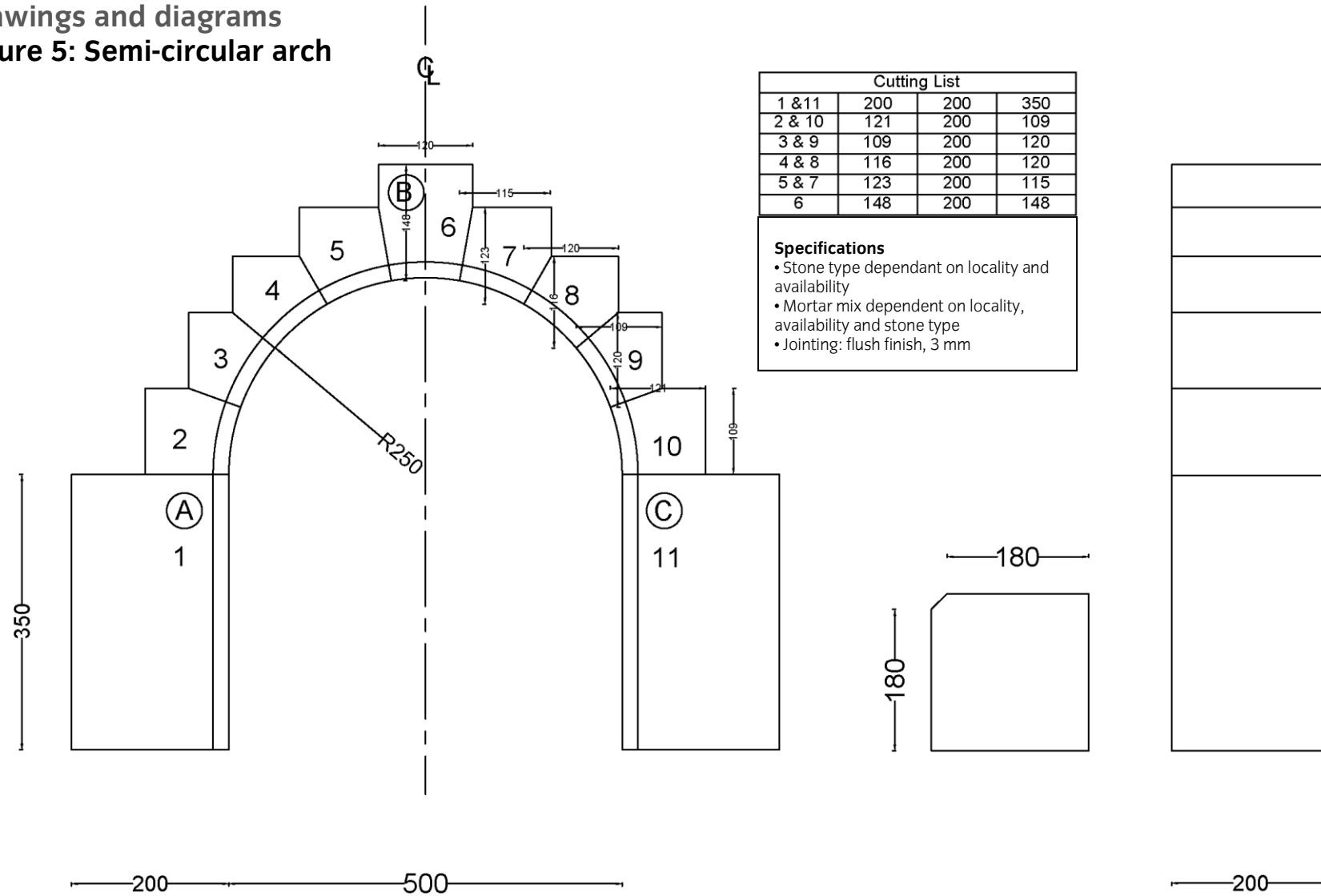


Drawings and diagrams
Figure 4: Full arch



1044

Drawings and diagrams
Figure 5: Semi-circular arch



Front Elevation

Section

Side Elevation

Published by City & Guilds
1 Giltspur Street
London
EC1A 9DD
T +44 (0)844 543 0000
F +44 (0)20 7294 2413
www.cityandguilds.com

**City & Guilds is a registered charity
established to promote education
and training**

About City & Guilds

As the UK's leading vocational education organisation, City & Guilds is leading the talent revolution by inspiring people to unlock their potential and develop their skills. We offer over 500 qualifications across 28 industries through 8500 centres worldwide and award around two million certificates every year. City & Guilds is recognised and respected by employers across the world as a sign of quality and exceptional training.

City & Guilds Group

The City & Guilds Group operates from three major hubs: London (servicing Europe, the Caribbean and Americas), Johannesburg (servicing Africa), and Singapore (servicing Asia, Australia and New Zealand). The Group also includes the Institute of Leadership & Management (management and leadership qualifications), City & Guilds Land Based Services (land-based qualifications), the Centre for Skills Development (CSD works to improve the policy and practice of vocational education and training worldwide) and Learning Assistant (an online e-portfolio).

Copyright

The content of this document is, unless otherwise indicated, © The City and Guilds of London Institute and may not be copied, reproduced or distributed without prior written consent. However, approved City & Guilds centres and candidates studying for City & Guilds qualifications may photocopy this document free of charge and/or include a PDF version of it on centre intranets on the following conditions:

- centre staff may copy the material only for the purpose of teaching candidates working towards a City & Guilds qualification, or for internal administration purposes
- candidates may copy the material only for their own use when working towards a City & Guilds qualification

The *Standard Copying Conditions* (see the City & Guilds website) also apply.

Published by City & Guilds, a registered charity established to promote education and training

Every effort has been made to ensure that the information contained in this publication is true and correct at the time of going to press. However, City & Guilds' products and services are subject to continuous development and improvement and the right is reserved to change products and services from time to time. City & Guilds cannot accept liability for loss or damage arising from the use of information in this publication.