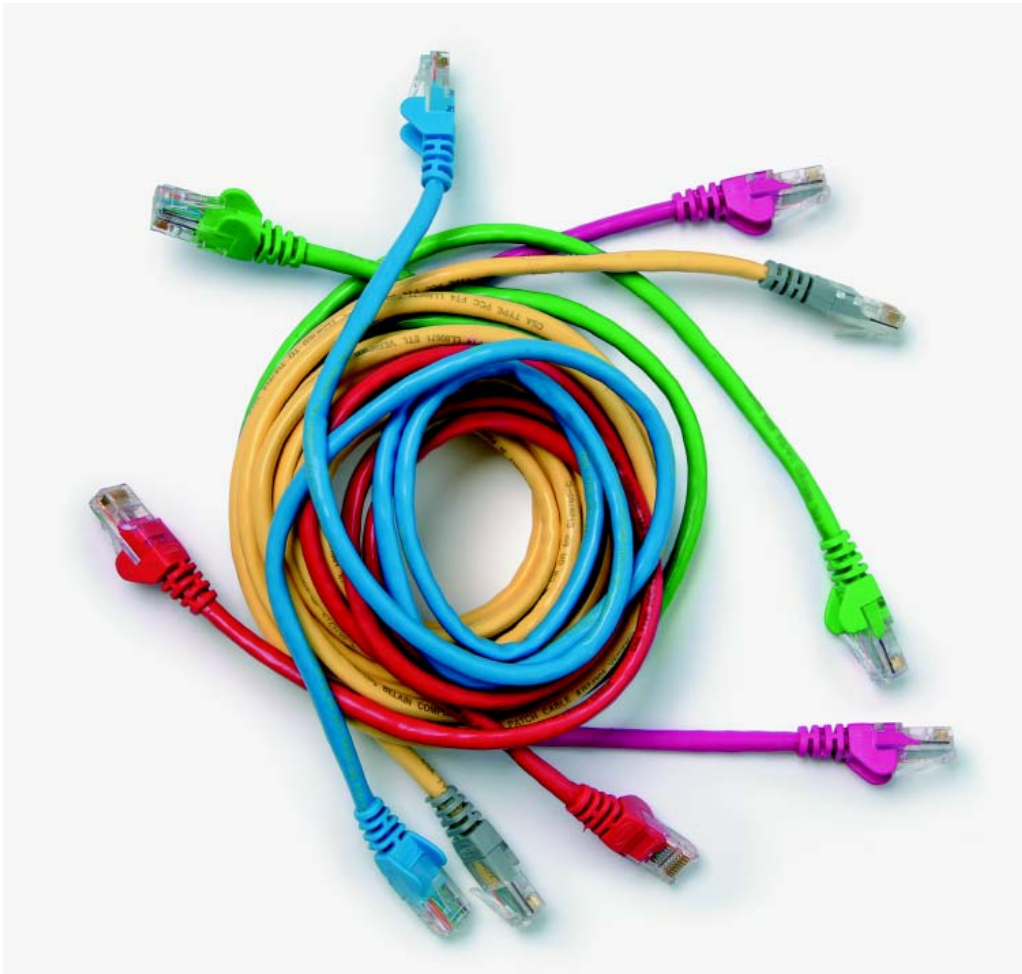


Level 1 Dismantle, assemble, install and maintain a desktop computing system (7276-106)

Assignment guide for Candidates Assignment C



About City & Guilds

City & Guilds is the UK's leading provider of vocational qualifications, offering over 500 awards across a wide range of industries, and progressing from entry level to the highest levels of professional achievement. With over 8500 centres in 100 countries, City & Guilds is recognised by employers worldwide for providing qualifications that offer proof of the skills they need to get the job done.

City & Guilds Group

The City & Guilds Group includes City & Guilds, ILM (the Institute of Leadership & Management) which provides management qualifications, learning materials and membership services, NPTC which offers land-based qualifications and membership services, and HAB (the Hospitality Awarding Body). City & Guilds also manages the Engineering Council Examinations on behalf of the Engineering Council.

Equal opportunities

City & Guilds fully supports the principle of equal opportunities and we are committed to satisfying this principle in all our activities and published material. A copy of our equal opportunities policy statement is available on the City & Guilds website.

Copyright

The content of this document is, unless otherwise indicated, © The City and Guilds of London Institute 2010 and may not be copied, reproduced or distributed without prior written consent.

However, approved City & Guilds centres and learners studying for City & Guilds qualifications may photocopy this document free of charge and/or include a locked PDF version of it on centre intranets on the following conditions:

- centre staff may copy the material only for the purpose of teaching learners working towards a City & Guilds qualification, or for internal administration purposes
- learners may copy the material only for their own use when working towards a City & Guilds qualification

The *Standard Copying Conditions* on the City & Guilds website also apply.

Please note: National Occupational Standards are not © The City and Guilds of London Institute. Please check the conditions upon which they may be copied with the relevant Sector Skills Council.

Publications

City & Guilds publications are available on the City & Guilds website or from our Publications Sales department at the address below or by telephoning +44 (0)20 7294 2850 or faxing +44 (0)20 7294 3387.

Every effort has been made to ensure that the information contained in this publication is true and correct at the time of going to press. However, City & Guilds' products and services are subject to continuous development and improvement and the right is reserved to change products and services from time to time. City & Guilds cannot accept liability for loss or damage arising from the use of information in this publication.

City & Guilds

1 Giltspur Street

London EC1A 9DD

T +44 (0)844 543 0000 (Centres)

T +44 (0)844 543 0033 (Learners)

F +44 (0)20 7294 2413

www.cityandguilds.com

learnersupport@cityandguilds

Contents

Level 1 Dismantle, assemble, install and maintain a desktop computing system (7276-106)

Introduction – Information for Candidates	4
Candidate instructions	5

Level 1 Dismantle, assemble, install and maintain a desktop computing system (7276-106) Assignment C

Introduction – Information for Candidates

About this document

This assignment comprises all of the assessment for Level 1 Dismantle, assemble, install and maintain a desktop computing system (7276-106).

Health and safety

You are asked to consider the importance of safe working practices at all times.

You are responsible for maintaining the safety of others as well as your own. Anyone behaving in an unsafe fashion will be stopped and a suitable warning given. You will **not** be allowed to continue with an assignment if you compromise any of the Health and Safety requirements. This may seem rather strict but, apart from the potentially unpleasant consequences, you must acquire the habits required for the workplace.

Time allowance

The recommended time allowance for this assignment is **3 hours**.

Level 1 Dismantle, assemble, install and maintain a desktop computing system (7276-106)

Candidate instructions

Time allowance: 3 hours

Assignment set up:

This assignment is made up of **one** task

- Task A – Identify parts/components, install new hardware, software and applications, and maintain a Personal Computer (PC)

Scenario

Your customer has impaired vision and therefore needs large font and icon sizes. While using the Internet, the PC crashed and now the customer cannot see what is on the screen as the settings have reverted to default. The customer also reports that the mouse pointer does not move smoothly and the PC's CD drive does not read/write. You are requested to install a new CD drive. Upon inspecting the PC, you notice that the mouse is very dirty and the PC has a loose expansion card. As the customer uses the Internet, you suspect the presence of viruses and spyware. For customer satisfaction, you will carry out some basic PC maintenance to ensure that the system runs smoothly in the future. Any problems while carrying out this assignment must be recorded on the Fault Reporting Log Sheet that is provided.

Task A – Identify parts/components, install new hardware, software and applications, and maintain a Personal Computer (PC)

- 1 Power up the PC, identify the problem with the display and complete the Fault Reporting Log Sheet.
 - 2 Set up the display properties to your customer's satisfaction and produce a screen print showing your settings.
 - 3 Shut down the PC.
 - 4 Prepare a log of visible ports/connectors on the back of the PC and identify **four** peripherals that they should connect to.
- Q1 State the use of the peripherals listed in Task A4.
- Q2 State **six** different items required for PC maintenance.
- 5 Clean the mouse using the correct equipment and materials.

- Q3 List **two** safety factors to be considered before dismantling a PC.
- 6 Taking ESD/electrical precautions, remove the cover of the base unit.
- 7 Clean the CPU and PSU fans using the correct equipment.
- 8 Reseat the loose expansion card and enter the details in the Fault Reporting Log Sheet.
- Q4 State the use of the expansion card fixed in Task A8.
- Q5 List **two** methods for the safe storage of devices.
- 9 Remove the old CD drive from the PC and safely store it.
- 10 Install a new CD/RW drive in the PC.
- 11 Perform a physical check on the system for loose connectors, loose screws, and seating of all expansion cards; enter the details in the Fault Reporting Log Sheet.
- 12 Ask your assessor to perform a safety check on your internal alterations. Do **not** proceed with the assignment until told to do so by your Assessor. Refit the cover of the base unit and power up the system.
- 13 Check the functionality of the mouse.
- 14 Check the functionality of the newly installed CD/RW drive by writing a file to a disk and then reading back using the Operating System's browser. Produce a screen print of the contents of the disk after you have burned a file to it.
- Q6 List **three** different types of PC security software and state their use.
- 15 Install and run the security software provided and produce a screen print showing the results.
- 16 Delete the temporary Internet files from the hard disk and produce a screen print.
- 17 Use screen prints to explain how you would check a hard disk for errors. Do **not** initiate the scan.
- Q7 List **three** different preventative maintenance procedures for software that your customer should carry out to avoid any further security problems.

When you have finished working:

- Sign each document above your name and label all removable storage media with your name.
- Hand all paperwork and removable storage media to your assessor.

If the assignment is taken over more than one period, all paperwork and removable media must be returned to the test supervisor at the end of each sitting.

End of assignment

Published by City & Guilds

1 Giltspur Street

London

EC1A 9DD

T +44 (0)844 543 0000 (Centres)

T +44 (0)844 543 0033 (Learners)

F +44 (0)20 7294 2413

www.cityandguilds.com

**City & Guilds is a registered charity
established to promote education
and training**