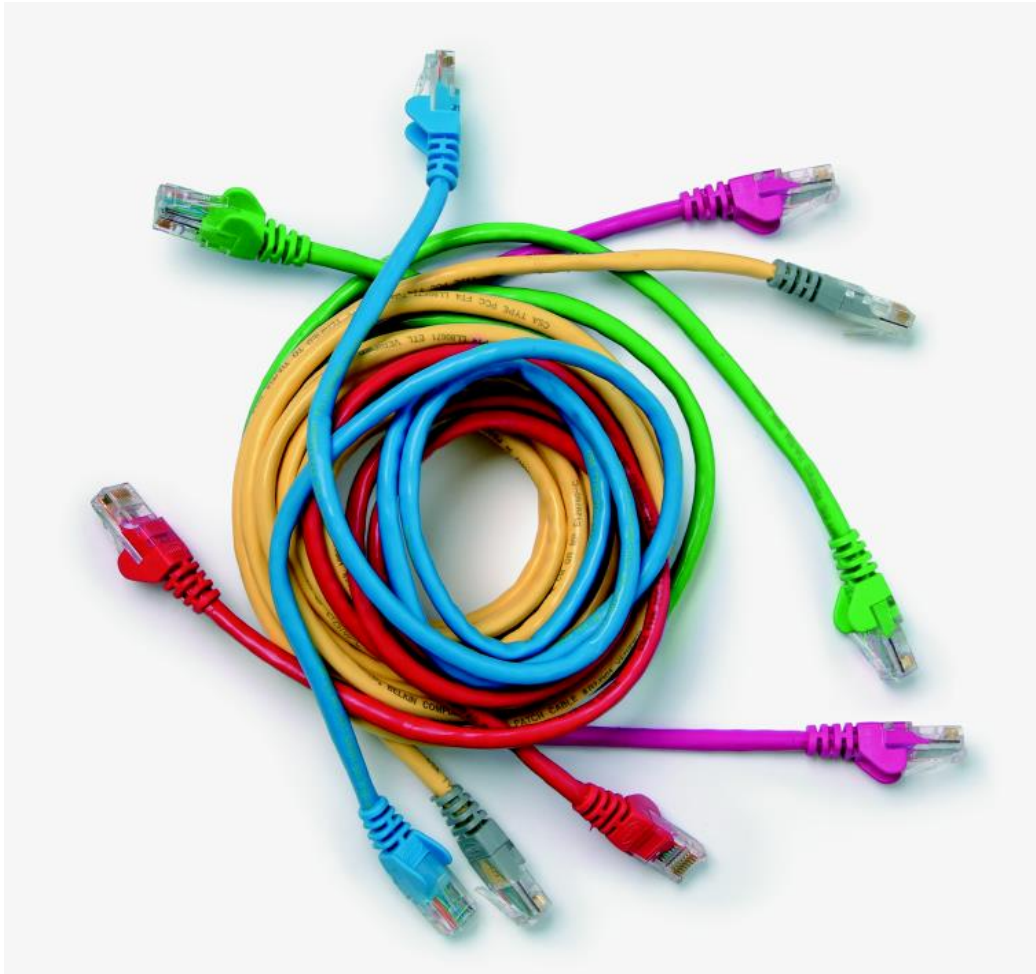


Level 2 Networking Principles (7540-002)

Systems and Principles Assignment guide for Candidates Assignment A



About City & Guilds

City & Guilds is the UK's leading provider of vocational qualifications, offering over 500 awards across a wide range of industries, and progressing from entry level to the highest levels of professional achievement. With over 8500 centres in 100 countries, City & Guilds is recognised by employers worldwide for providing qualifications that offer proof of the skills they need to get the job done.

City & Guilds Group

The City & Guilds Group includes City & Guilds, City & Guilds Institute, ILM (the Institute of Leadership & Management) which provides management qualifications, learning materials and membership services, NPTC which offers land-based qualifications and membership services, and HAB (the Hospitality Awarding Body). City & Guilds also manages the Engineering Council Examinations on behalf of the Engineering Council.

Equal opportunities

City & Guilds fully supports the principle of equal opportunities and we are committed to satisfying this principle in all our activities and published material. A copy of our equal opportunities policy statement is available on the City & Guilds website.

Copyright

The content of this document is, unless otherwise indicated, © The City and Guilds of London Institute 2010 and may not be copied, reproduced or distributed without prior written consent.

However, approved City & Guilds centres and candidates studying for City & Guilds qualifications may photocopy this document free of charge and/or include a locked PDF version of it on centre intranets on the following conditions:

- centre staff may copy the material only for the purpose of teaching candidates working towards a City & Guilds qualification, or for internal administration purposes
- candidates may copy the material only for their own use when working towards a City & Guilds qualification

The *Standard Copying Conditions* on the City & Guilds website also apply.

Please note: National Occupational Standards are not © The City and Guilds of London Institute. Please check the conditions upon which they may be copied with the relevant Sector Skills Council.

Publications

City & Guilds publications are available on the City & Guilds website or from our Publications Sales department at the address below or by telephoning +44 (0)20 7294 2850 or faxing +44 (0)20 7294 3387.

Every effort has been made to ensure that the information contained in this publication is true and correct at the time of going to press. However, City & Guilds' products and services are subject to continuous development and improvement and the right is reserved to change products and services from time to time. City & Guilds cannot accept liability for loss or damage arising from the use of information in this publication.

City & Guilds

1 Giltspur Street

London EC1A 9DD

T +44 (0)844 543 0000 (Centres)

T +44 (0)844 543 0033 (Learners)

F +44 (0)20 7294 2413

**www.cityandguilds.com
learnersupport@cityandguilds.com**

Contents

Level 2 Networking Principles (7540-002)

Assignment A

Introduction – Information for Candidates	2
Candidate Instructions	3

Level 2 Networking Principles (7540-002)

Assignment A

Introduction – Information for Candidates

About this document

This assignment comprises all of the assessment for Level 2 Networking Principles (7540-002).

Health and safety

You are asked to consider the importance of safe working practices at all times.

You are responsible for maintaining the safety of others as well as your own. Anyone behaving in an unsafe fashion will be stopped and a suitable warning given. You will **not** be allowed to continue with an assignment if you compromise any of the Health and Safety requirements. This may seem rather strict but, apart from the potentially unpleasant consequences, you must acquire the habits required for the workplace.

Time allowance

The recommended time allowance for this assignment is **2 and a half hours**.

Level 2 Networking Principles (7540-002)

Candidate Instructions

Time allowance: 2 and a half hours

Assignment set up:

This assignment is made up of **four** tasks:

- Task A – The OSI Model and TCP/IP suite
- Task B – Network Topologies and Transmission Systems
- Task C – Advantages and disadvantages of different types of network
- Task D – Media access control methods in a LAN

Scenario

You are employed by Signom Networks, a company that provides installation and technical support services for clients networks. They regularly take on a number of apprentices and guide them through their studies. In preparation for a new apprentice intake, you have been tasked with producing information for a series of technical study cards.

You may use a format of your choice to provide the information for the cards and should remember that study cards are not full and complete explanations of each topic; but are short reminders, specifying each part of the topic that needs to be studied in greater depth by the apprentice.

Task A – The OSI Model and TCP/IP suite

In the information for this Study Card, you should identify the following:

- what the apprentices need to learn about the OSI Model
- protocols that make up the TCP/IP Suite
- the types of addresses used on networks

- 1 Provide information that identifies the function of **each** of the layers of the OSI model.
- 2 List **eight** of the protocols that make up the TCP/IP suite of protocols and give an example where **each** of the protocols would be used.
- 3 Identify **two** types of addresses used in networks and briefly explain why they are used.

Task B – Network Topologies and Transmission Systems

For these study cards you will provide information with diagrams as well as identifying some of the key points in Network Topologies and Wireless networks

- 1 Draw / sketch **three** types of network topology.
Label the server in **each** diagram and provide the correct name for the type of network.
- 2 Using the **three** diagrams provided by the assessor, write on the diagram the name / type of cable and the name / type of connector.
- 3 Briefly describe the **four** main types of Wireless LAN.
- 4 Briefly describe the functions of **each** of the following devices:
 - Interface controller
 - Repeater
 - passive, active and intelligent hubs
 - Bridge
 - Switch
 - Router
 - Gateway
- 5 Produce a labelled diagram that provides a simple explanation that will enable apprentices to understand the 5-4-3 rule of network design.

Task C – Advantages and disadvantages of different types of network

For Task C you will need to provide information about some of the advantages and disadvantages of different types of network.

- 1 Identify a property of:
 - peer to peer networks
 - client server networks.
- 2 Identify one sharing advantage and one sharing disadvantage of:
 - peer to peer networks
 - client server networks.
- 3 Identify a security aspect of:
 - peer to peer networks
 - client server networks.
- 4 Identify the uses and limitations of a null modem connection.

Task D – Media access control methods in a LAN

In Task D you will need to provide information on the different **media access control methods** used in a LAN

- 1 List **three** types of media access control methods commonly used in a LAN.
- 2 Briefly explain what is meant by a collision in a network and give one brief example of how a network can deal with it.
- 3 Briefly explain the difference between a Token Bus and a Token Ring, identifying how the token operates in each.
- 4 Briefly explain the line encoding used in CSMA/CD and CSMA/CA networks
- 5 Identify **two** limitations of CSMA/CA networks.

When you have finished working:

- Sign each document above your name and label all removable storage media with your name.
- Hand all paperwork and removable storage media to your assessor.

If the assignment is taken over more than one period, all paperwork and removable media must be returned to the test supervisor at the end of each sitting.

End of assignment

Published by City & Guilds
1 Giltspur Street
London
EC1A 9DD
T +44 (0)844 543 0000 (Centres)
T +44 (0)844 543 0033 (Learners)
F +44 (0)20 7294 2413
www.cityandguilds.com

**City & Guilds is a registered charity
established to promote education
and training**