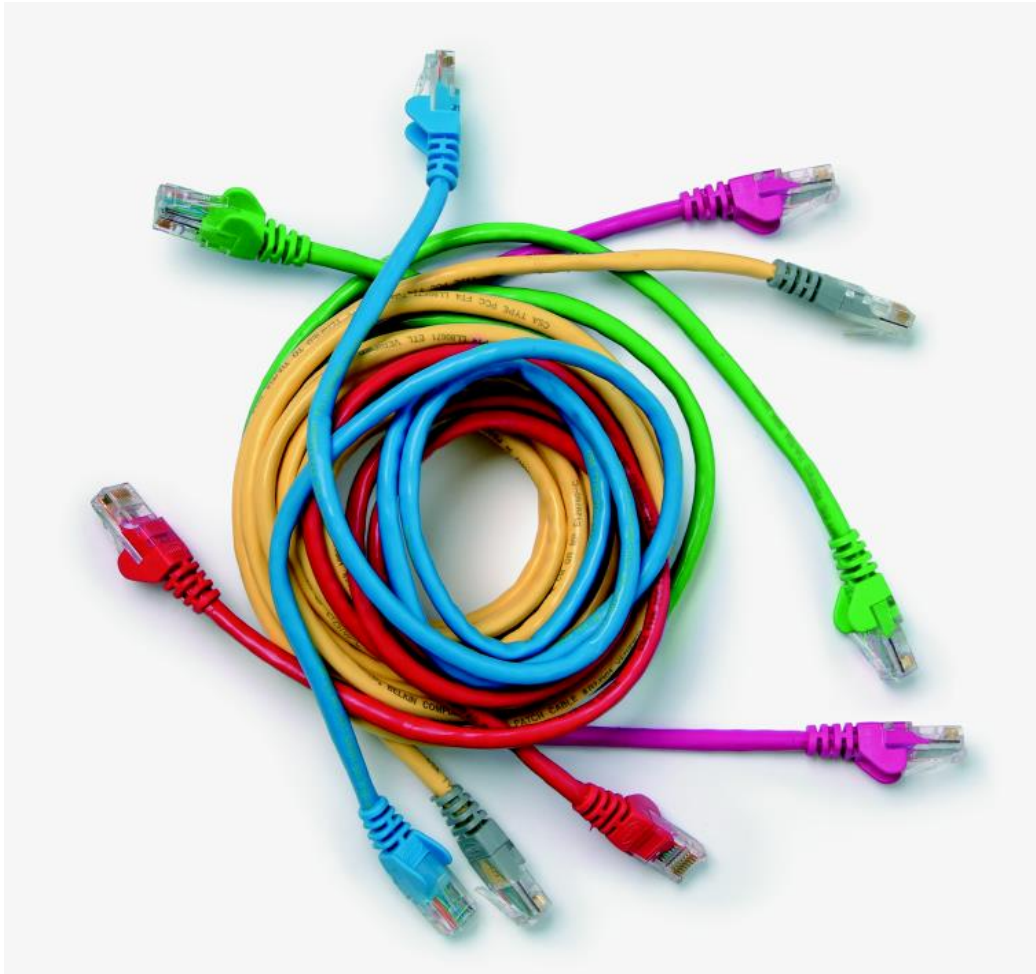


Level 2 Install, configure and test ICT networks (7540-235)

Systems and Principles
Assignment guide for Candidates
Assignment C



About City & Guilds

City & Guilds is the UK's leading provider of vocational qualifications, offering over 500 awards across a wide range of industries, and progressing from entry level to the highest levels of professional achievement. With over 8500 centres in 100 countries, City & Guilds is recognised by employers worldwide for providing qualifications that offer proof of the skills they need to get the job done.

City & Guilds Group

The City & Guilds Group includes City & Guilds, ILM (the Institute of Leadership & Management) which provides management qualifications, learning materials and membership services, NPTC which offers land-based qualifications and membership services, and HAB (the Hospitality Awarding Body). City & Guilds also manages the Engineering Council Examinations on behalf of the Engineering Council.

Equal opportunities

City & Guilds fully supports the principle of equal opportunities and we are committed to satisfying this principle in all our activities and published material. A copy of our equal opportunities policy statement is available on the City & Guilds website.

Copyright

The content of this document is, unless otherwise indicated, © The City and Guilds of London Institute 2009 and may not be copied, reproduced or distributed without prior written consent.

However, approved City & Guilds centres and learners studying for City & Guilds qualifications may photocopy this document free of charge and/or include a locked PDF version of it on centre intranets on the following conditions:

- centre staff may copy the material only for the purpose of teaching learners working towards a City & Guilds qualification, or for internal administration purposes
- learners may copy the material only for their own use when working towards a City & Guilds qualification

The *Standard Copying Conditions* on the City & Guilds website also apply.

Please note: National Occupational Standards are not © The City and Guilds of London Institute. Please check the conditions upon which they may be copied with the relevant Sector Skills Council.

Publications

City & Guilds publications are available on the City & Guilds website or from our Publications Sales department at the address below or by telephoning +44 (0)20 7294 2850 or faxing +44 (0)20 7294 3387.

Every effort has been made to ensure that the information contained in this publication is true and correct at the time of going to press. However, City & Guilds' products and services are subject to continuous development and improvement and the right is reserved to change products and services from time to time. City & Guilds cannot accept liability for loss or damage arising from the use of information in this publication.

City & Guilds

1 Giltspur Street

London EC1A 9DD

T +44 (0)844 543 0000 (Centres)

T +44 (0)844 543 0033 (Learners)

www.cityandguilds.com

learnersupport@cityandguilds.com

Contents

Level 2 Install, configure and test ICT networks (7540-235)

Assignment C

Introduction – Information for Candidates	2
Candidate instructions	3

Level 2 Install, configure and test ICT networks (7540-235)

Assignment C

Introduction – Information for Candidates

About this document

This assignment comprises all of the assessment for Level 2 Install, configure and test ICT networks (7540-235).

Health and safety

You are asked to consider the importance of safe working practices at all times.

You are responsible for maintaining the safety of others as well as your own. Anyone behaving in an unsafe fashion will be stopped and a suitable warning given. You will **not** be allowed to continue with an assignment if you compromise any of the Health and Safety requirements. This may seem rather strict but, apart from the potentially unpleasant consequences, you must acquire the habits required for the workplace.

Time allowance

The recommended time allowance for this assignment is **4 hours**.

Level 2 Install, configure and test ICT networks (7540-235)

Candidate instructions

Time allowance: 4 hours

Assignment set up:

This assignment is made up of **four** tasks

Task A – Select suitable hardware and software for a wireless network

Task B – Construct a wireless network

Task C – Test the network

Task D – Short answer questions

Scenario

You work as a network support technician in a publishing company that is planning to move 10 staff into a separate building. For technical reasons, the management has decided that this group should have a separate, private network using wireless technology, with one connection to the main network via the Internet. You have been asked to install and set up the wireless network for this group, ensuring that it is safe and secure to use.

Task A – Select suitable hardware and software for a wireless network

- 1 Research the options for networks using IEEE 802.XXX and write down brief details of three alternative standards that you could use for wireless networking. Include the speed of each standard.**
- 2 State the **most** suitable standard that will allow the exchange of large data files within the workgroup giving **one** reason for your decision.
- 3 Select **one** network topology (ad hoc or infrastructure) that would be the **most** appropriate and give **one** reason why.
- 4 From the hardware and software provided by your Assessor, select items that you will need to set up the wireless network using two computers and connecting it to the main network using a Cat5 patch lead and Ethernet switch.

Task B – Construct a wireless network

- 1 Use appropriate tools and safety/ESD protection equipment to prepare two computers to connect to the wireless network.**
 - a) Disconnect the computers from the power supply.**
 - b) Install the necessary hardware into the computers.**
 - c) Make any required connections.**
- 2 Ask your Assessor to check the safety of your installation. After approval, connect the computers to the power supply, switch them on and boot up.
- 3 Install the drivers and other software as necessary onto the two computers.
- 4 Configure the wireless network security settings as indicated by your Assessor. Record all configuration settings.
- 5 Test the wireless network to confirm that it operates correctly. Record the tests you perform and the results.

Task C – Test the network

- 1 Use standard command line utilities to confirm the integrity of the network. Take a screen print of the results.**
- 2 Download onto one PC the data files as indicated by your Assessor and organise them into a logical directory structure according to title and file owner.
- 3 Copy the directory structure over to the other PC using the network.

Task D – Short answer questions

- Q1 State three different security measures that would normally be used to protect a computer network. Briefly explain the reason for each measure and how it is applied.**
- Q2 Describe what is meant by the term **firewall**. Briefly explain why it is needed **and** how it adds to a network's security.
- Q3 Describe **three** common problems that you might come across when you install or operate a computer network. Briefly describe what effect they might have on the network's performance or operation.
- Q4 Briefly describe the function of the following OSI Layers.
- a) Layer 4 (Transport).
 - b) Layer 3 (Network).
- Name a very commonly used pair of protocols that operate in these layers.
- Q5 Identify the class of IP address each of the following falls into
- a) 192.168.1.1
 - b) 98.127.30.12
 - c) 222.255.255.1
- Q6 Briefly explain what a subnet mask does (eg 255.255.255.0).
- Q7 Briefly explain what a MAC Address is.
- 1 Hand all paperwork and removable storage media to your Assessor. Ensure that your name is clearly identified on your work.
 - 2 Sign above your name and hand all paperwork to your Assessor.

End of assignment

Published by City & Guilds

1 Giltspur Street

London

EC1A 9DD

T +44 (0)844 543 0000 (Centres)

T +44 (0)844 543 0033 (Learners)

www.cityandguilds.com

**City & Guilds is a registered charity
established to promote education
and training**