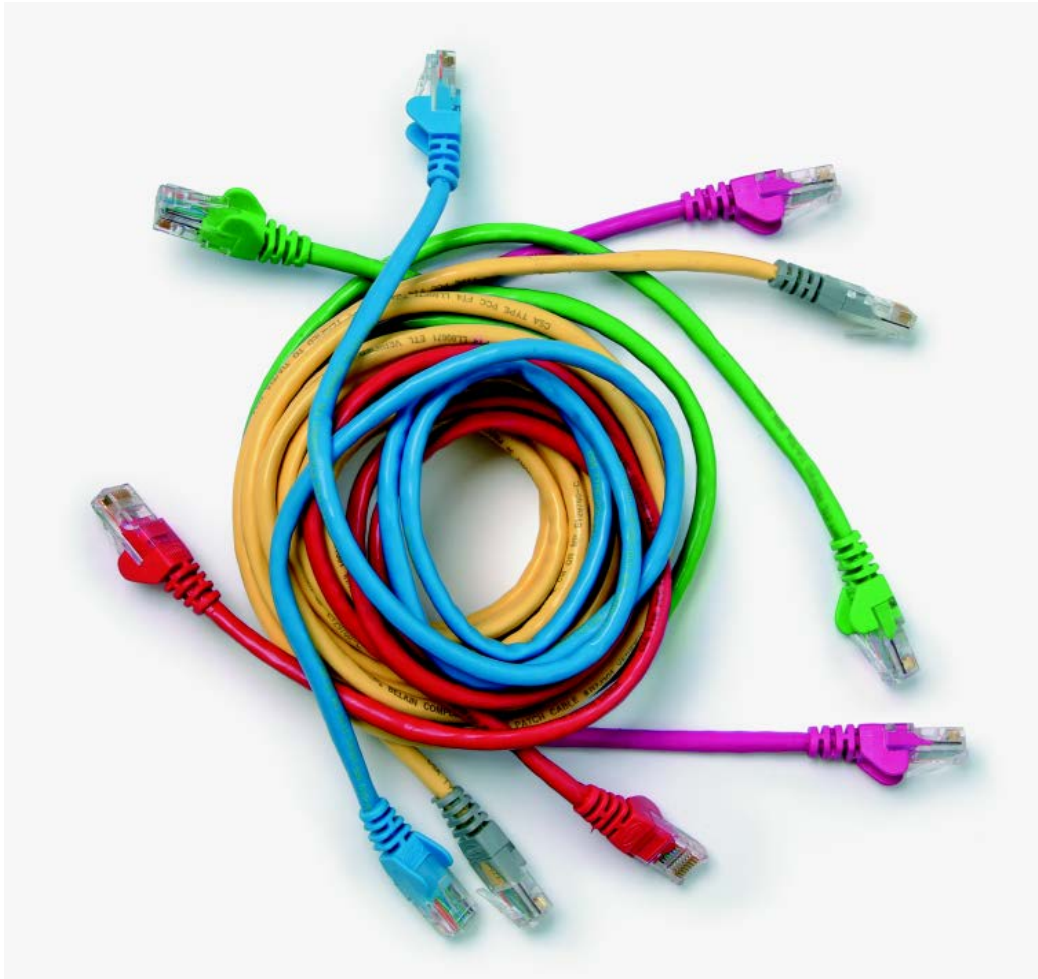


# Systems and Principles Unit Syllabus

**Level 2 Customer support provision 2**  
7540-001



## **About City & Guilds**

City & Guilds is the UK's leading provider of vocational qualifications, offering over 500 awards across a wide range of industries, and progressing from entry level to the highest levels of professional achievement. With over 8500 centres in 100 countries, City & Guilds is recognised by employers worldwide for providing qualifications that offer proof of the skills they need to get the job done.

## **City & Guilds Group**

The City & Guilds Group includes City & Guilds, ILM (the Institute of Leadership & Management) which provides management qualifications, learning materials and membership services, NPTC which offers land-based qualifications and membership services, and HAB (the Hospitality Awarding Body). City & Guilds also manages the Engineering Council Examinations on behalf of the Engineering Council.

## **Equal opportunities**

City & Guilds fully supports the principle of equal opportunities and we are committed to satisfying this principle in all our activities and published material. A copy of our equal opportunities policy statement *Access to assessment and qualifications* is available on the City & Guilds website.

## **Copyright**

The content of this document is, unless otherwise indicated, © The City and Guilds of London Institute 2010 and may not be copied, reproduced or distributed without prior written consent.

However, approved City & Guilds centres and learners studying for City & Guilds qualifications may photocopy this document free of charge and/or include a locked PDF version of it on centre intranets on the following conditions:

- centre staff may copy the material only for the purpose of teaching learners working towards a City & Guilds qualification, or for internal administration purposes
- learners may copy the material only for their own use when working towards a City & Guilds qualification
- the *Standard Copying Conditions* on the City & Guilds website.

Please note: National Occupational Standards are not © The City and Guilds of London Institute. Please check the conditions upon which they may be copied with the relevant Sector Skills Council.

## **Publications**

City & Guilds publications are available on the City & Guilds website or from our Publications Sales department at the address below or by telephoning +44 (0)20 7294 2850 or faxing +44 (0)20 7294 3387.

Every effort has been made to ensure that the information contained in this publication is true and correct at the time of going to press. However, City & Guilds' products and services are subject to continuous development and improvement and the right is reserved to change products and services from time to time. City & Guilds cannot accept liability for loss or damage arising from the use of information in this publication.

## **City & Guilds**

**1 Giltspur Street**

**London EC1A 9DD**

**T +44 (0)844 543 0000 (Centres)**

**T +44 (0)844 543 0033 (Learners)**

**F +44 (0)20 7294 2400**

**[www.cityandguilds.com](http://www.cityandguilds.com)**

**[enquiry@cityandguilds.com](mailto:enquiry@cityandguilds.com)**

# Contents

## Unit 001 Customer support provision 2

Syllabus Overview	2
Outcome 1 Provide technical information and support in response to customer requirements	3
Outcome 2 Identify potential improvements in the customers' use of resources	6
Outcome 3 Assist in reviews to identify how automated procedures may improve customers' use of resources	7
Outcome 4 Create routine automated procedures and assist in the creation of complex automated procedures	9
Unit record sheet	12

# Unit 001                  Customer support provision 2

## Syllabus Overview

### Rationale

This unit will enable candidates to provide routine customer support to a range of ICT users. Candidates will develop a deeper understanding of the support needs of ICT customers and the duties of an ICT technician. They will also develop practical skills to meet customer needs by using different methods and techniques. Throughout this unit, emphasis is drawn upon developing candidates' attitude towards improving customer care for a successful business.

### Learning outcomes

There are **four** outcomes to this unit. The candidate will be able to:

- Provide technical information and support in response to customer requirements
- Identify potential improvements in the customers' use of resources
- Assist in reviews to identify how automated procedures may improve customers' use of resources
- Create routine automated procedures and assist in the creation of complex automated procedures

### Guided learning hours

It is recommended that 60 hours should be allocated for this unit. This may be on a full time or part time basis.

### Connections with other qualifications

This unit contributes towards the knowledge and understanding required for the following qualifications:

### Assessment and grading

Assessment will be by means of a **set assignment** covering both practical activities and underpinning knowledge.

## Unit 001

## Customer support provision 2

### Outcome 1

Provide technical information and support in response to customer requirements

#### Practical activities

The candidate will be able to:

- 1 gather customer support requirements
  - a user training
  - b user hints and tips documentation
  - c location of technical information
  - d hardware needs
  - e software needs
  - f response time
- 2 record/log details of customer requirements eg
  - a call logging software
  - b support log
  - c customer
  - d problem
  - e diagnosis
  - f date/time of problem reported
  - g resolution/outcome
- 3 gather information from a range of sources
  - a written materials eg manuals, manufacturers' documentation, procedures, books, guides and notes, technical logs
  - b on-line resources eg help files, manufacturers' websites, CD, DVD, libraries, electronic media, forums
  - c others eg colleagues, specialists, practitioners or manufacturers, telephone helplines
- 4 provide technical support in response to customer requirements using the following methods
  - a written eg notes, email, manual
  - b practical demonstration
  - c verbal eg over the telephone, face to face
- 5 record/log outcome of response to customer
- 6 escalate unresolved requests for technical support to suitable person(s).

## Underpinning knowledge

The candidate will be able to:

- 1 describe the importance of responding to a customer's request in a prompt and professional manner
- 2 describe how to verify that incident requests are valid
- 3 identify the key features of a Service Level Agreement (SLA) eg
  - a service catalogue/portfolio
  - b operation hours
  - c service levels
- 4 identify sources of technical support information eg
  - a manuals
  - b manufacturers' documentation and websites
  - c books
  - d procedures guides and notes
  - e help files
  - f CD-ROMS
  - g DVD-ROMs
  - h libraries
  - j electronic media
  - k bulletin boards
  - l colleagues
  - m specialists
  - n practitioners and manufacturers
  - p telephone helplines
- 5 identify different methods of providing technical support and when each should be used, eg
  - a verbal
  - b written
  - c practical
- 6 identify advantages and disadvantages of different methods of communication with customers
  - a written
  - b practical
  - c verbal
- 7 describe the reasons for recording/logging customer requirements for technical support and the outcomes, eg
  - a monitoring system trends
  - b identifying potential failures
  - c identifying user training needs
  - d identifying weak/unreliable areas in the system
  - e identifying potential improvements

## Underpinning knowledge continued

- 8 identify the escalation process for unresolved requests, eg
  - a supervisor
  - b experienced colleague
  - c line manager
- 9 describe the importance of updating customers on the progress of service requests
- 10 describe relevant health and safety regulations which may affect the response to a customer request
  - a health and safety act
  - b computer misuse act
  - c data protection act
- 11 describe how technical support may be constrained by health and safety considerations
- 12 describe applications used for technical support, eg
  - a email
  - b call logging
  - c database customer relationship management (CRM)
  - d remote system access
  - e instant messaging
- 13 identify how advances in technology affect the provision of customer support eg
  - a faster and larger memory
  - b smaller physical size of components.

## Unit 001

## Customer support provision 2

### Outcome 2

Identify potential improvements in the customers' use of resources

#### Practical activities

The candidate will be able to:

- 1 prepare accurate records of existing hardware resources
  - a complete systems
  - b peripherals eg scanners, printers, webcam
  - c network connection
  - d consumables eg printing paper, toner, cartridges, disks (CD, DVD)
- 2 prepare accurate records of existing software resources
  - a operating systems
  - b installed applications or components
  - c installed specialised (bespoke) software
  - d utilities
- 3 gather information on customers' use of existing resources
  - a questionnaires
  - b user logs
  - c support logs
  - d records
  - e event or audit logs
  - f access logs
- 4 provide a brief written summary, or brief written notes, containing recommendations on actions to take to improve the customer's use of resources.

#### Underpinning knowledge

The candidate will be able to:

- 1 identify different methods of gathering and recording information, eg
  - a questioning using open and closed questions
  - b using questionnaires
  - c photocopying necessary documents
  - d paper-based logs
  - e producing printouts of logs.



## Unit 001

## Customer support provision 2

### Outcome 3

Assist in reviews to identify how automated procedures may improve customers' use of resources

#### Practical activities

The candidate will be able to:

- 1 identify customers' frequently performed tasks, eg
  - a back-up
  - b data transfer
  - c virus scan/spyware and malware removal
  - d email configuration and send/receive
  - e disk maintenance
  - f auto-run applications
  - g update software/apply software patches
- 2 gather information to identify potential automated procedures, eg
  - a set up new styles
  - b simple macro
  - c add a button
  - d automate spelling corrections
  - e scheduled data transfers
  - f automated email send and receive
  - g automated back-up
  - h automated disk maintenance
- 3 make recommendations on which procedures should be automated.

## Underpinning knowledge

The candidate will be able to:

- 1 state the reasons for identifying customer's frequently performed tasks, to determine the potential for automated procedures
- 2 identify ways in which automated procedures may improve customers use of ICT
- 3 describe the function of automated procedures as a series of operations/actions which can be initiated and controlled by a number of smaller actions, eg
  - a key strokes
  - b button pressing
  - c menu selection
  - d macros initiated by
    - i key stroke sequence
    - ii radio buttons
    - iii menu selectors
  - e scheduled procedures
    - i maintenance
    - ii email send/receive
    - iii back-up.

## Unit 001

## Customer support provision 2

### Outcome 4

Create routine automated procedures and assist in the creation of complex automated procedures

#### Practical activities

The candidate will be able to:

- 1 complete routine automated procedures, eg
  - a timed back ups
  - b timed data transfer
  - c scheduled virus scan/spyware scan
  - d scheduled maintenance eg
    - i disk scanning
    - ii defragmentation
  - e shortcuts and hyperlinks
  - f auto-run applications
  - g add buttons to menu bar
- 2 select and use more complex automated procedures (eg log in/log on scripts, macros, automated email services etc) following an agreed pre-prepared plan
  - a document any relevant, existing system configuration
  - b configure the system to incorporate the new procedure
- 3 check that automated procedures perform required function
- 4 carry out testing of parts of more complex automated procedures following an agreed plan
- 5 record details of the automated procedures created.

## Underpinning knowledge

The candidate will be able to:

- 1 describe the benefits of routine automated procedures
  - a reliability
  - b consistency
  - c contingency
  - d efficiency
  - e effectiveness
- 2 describe common test methods for automated procedures, eg
  - a adjust timer for immediate activation and monitor execution of routines
  - b manually input trigger conditions and monitor execution of routines
- 3 identify types of routine and complex automated procedures eg systems and business processes
  - a routine eg
    - i auto back-up
    - ii auto data transfer
    - iii maintenance routines (defragmentation, virus scan, etc)
    - iv shortcuts
    - v auto-run applications
    - vi spelling corrections
    - vii add a button to menu bar
  - b complex eg
    - i log in/log on scripts
    - ii batch files
    - iii macros
    - iv automated email services
    - v templates
    - vi forms.

# Unit record sheet

Use this form to track your progress through this unit.

Tick the boxes when you have covered each outcome. When they are all ticked, you are ready to be assessed.

<b>Outcome</b>	<b>✓</b>	<b>Date</b>
<b>1 Provide technical information and support in response to customer requirements</b>	<input type="checkbox"/>	
<b>2 Identify potential improvements in the customers' use of resources</b>	<input type="checkbox"/>	
<b>3 Assist in reviews to identify how automated procedures may improve customers' use of resources</b>	<input type="checkbox"/>	
<b>4 Create routine automated procedures and assist in the creation of complex automated procedures</b>	<input type="checkbox"/>	

**Candidate Signature** \_\_\_\_\_

**Date** \_\_\_\_\_

**City & Guilds  
Registration Number** \_\_\_\_\_

**Quality nominee  
(if sampled)** \_\_\_\_\_

**Date** \_\_\_\_\_

**Assessor Signature** \_\_\_\_\_

**Date** \_\_\_\_\_

**External Verifier  
Signature (if sampled)** \_\_\_\_\_

**Date** \_\_\_\_\_

**Centre Name** \_\_\_\_\_

**Centre Number** \_\_\_\_\_

---

**Published by City & Guilds**  
**1 Giltspur Street**  
**London**  
**EC1A 9DD**  
**T +44 (0)20 7294 2468**  
**F +44 (0)20 7294 2400**  
**[www.cityandguilds.com](http://www.cityandguilds.com)**  
**[www.cityandguilds.com](http://www.cityandguilds.com)**

**City & Guilds is a registered charity**  
**established to promote education**  
**and training**