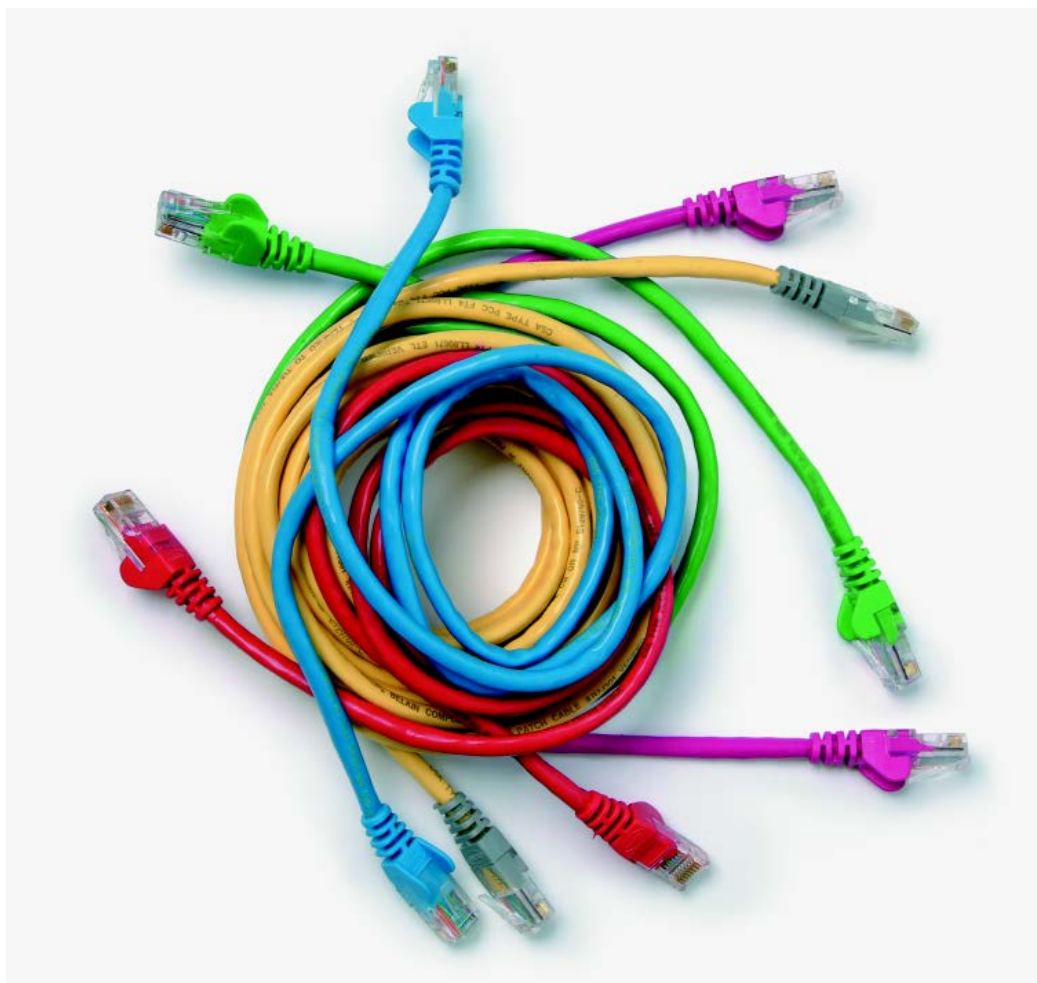


Level 3 Networking Principles (7540-031)

Assignment guide for Candidates

Assignment A



About City & Guilds

City & Guilds is the UK's leading provider of vocational qualifications, offering over 500 awards across a wide range of industries, and progressing from entry level to the highest levels of professional achievement. With over 8500 centres in 100 countries, City & Guilds is recognised by employers worldwide for providing qualifications that offer proof of the skills they need to get the job done.

City & Guilds Group

The City & Guilds Group includes City & Guilds, ILM (the Institute of Leadership & Management) which provides management qualifications, learning materials and membership services, NPTC which offers land-based qualifications and membership services, and HAB (the Hospitality Awarding Body). City & Guilds also manages the Engineering Council Examinations on behalf of the Engineering Council.

Equal opportunities

City & Guilds fully supports the principle of equal opportunities and we are committed to satisfying this principle in all our activities and published material. A copy of our equal opportunities policy statement is available on the City & Guilds website.

Copyright

The content of this document is, unless otherwise indicated, © The City and Guilds of London Institute 2010 and may not be copied, reproduced or distributed without prior written consent.

However, approved City & Guilds centres and learners studying for City & Guilds qualifications may photocopy this document free of charge and/or include a locked PDF version of it on centre intranets on the following conditions:

- centre staff may copy the material only for the purpose of teaching learners working towards a City & Guilds qualification, or for internal administration purposes
- learners may copy the material only for their own use when working towards a City & Guilds qualification

The *Standard Copying Conditions* on the City & Guilds website also apply.

Please note: National Occupational Standards are not © The City and Guilds of London Institute. Please check the conditions upon which they may be copied with the relevant Sector Skills Council.

Publications

City & Guilds publications are available on the City & Guilds website or from our Publications Sales department at the address below or by telephoning +44 (0)20 7294 2850 or faxing +44 (0)20 7294 3387.

Every effort has been made to ensure that the information contained in this publication is true and correct at the time of going to press. However, City & Guilds' products and services are subject to continuous development and improvement and the right is reserved to change products and services from time to time. City & Guilds cannot accept liability for loss or damage arising from the use of information in this publication.

City & Guilds

1 Giltspur Street

London EC1A 9DD

T +44 (0)844 543 0000 (Centres)

T +44 (0)844 543 0033 (Learners)

F +44 (0)20 7294 2413

www.cityandguilds.com

learnersupport@cityandguilds.com

Contents

Level 3 Networking Principles (7540-031)

Assignment A

Introduction – Information for Candidates	2
Candidate Instructions	3

Level 3 Networking Principles (7540-031)

Assignment A

Introduction – Information for Candidates

About this document

This assignment comprises all of the assessment for Level 3 Networking Principles (7540-031).

Health and safety

You are asked to consider the importance of safe working practices at all times.

You are responsible for maintaining the safety of others as well as your own. Anyone behaving in an unsafe fashion will be stopped and a suitable warning given. You will **not** be allowed to continue with an assignment if you compromise any of the Health and Safety requirements. This may seem rather strict but, apart from the potentially unpleasant consequences, you must acquire the habits required for the workplace.

Time allowance

The recommended time allowance for this assignment is **three and a half hours**.

Level 3 Networking Principles (7540-031)

Candidate Instructions

Time allowance: three and a half hours

Assignment set up:

This assignment is made up of **three** tasks:

- Task A
- Task B
- Task C

Scenario

Z.B.Data Comms is a company specialising in the design, construction and configuration of networks for businesses and industry.

Having successfully completed your apprenticeship you are to be interviewed for the post of Network Engineer.

As part of the pre-interview process you have been asked to demonstrate your current knowledge by completing a number of tasks.

Please use the Answer Sheet provided to complete all Tasks.

Task A

- 1 Explain the difference between logical and physical network topologies.
- 2 Describe how **each** of the following physical network topologies transmits data and specify appropriate cabling and connectors for each.
 - Bus
 - Star
 - Ring
 - Mesh
 - Hybrid or Tree
- 3 Describe data communication systems hardware and software components that are typically used in constructing and configuring a LAN.
Include in your description a minimum of **seven** hardware and **four** software components.
- 4 Identify **two** wiring standards and explain the difference between them.
- 5 Identify **three** wireless standards.

Task B

- 1 Describe the function of **each** layer of the OSI model and explain how the layers relate to each other, including encapsulation and framing.
- 2 For **each** layer of the OSI model, describe the key features, protocols and standards.

Task C

- 1 Describe the functions and key features of the **four** layers of the Internet Protocol (TCP/IP) model.
- 2 Describe the protocols of **each** TCP/IP layer.
- 3 Explain how the TCP/IP model relates to the OSI model.

When you have finished working:

- Sign each document above your name and label all removable storage media with your name.
- Hand all paperwork and removable storage media to your assessor.

If the assignment is taken over more than one period, all paperwork and removable media must be returned to the test supervisor at the end of each sitting.

End of assignment

Published by City & Guilds

1 Giltspur Street

London

EC1A 9DD

T +44 (0)844 543 0000 (Centres)

T +44 (0)844 543 0033 (Learners)

F +44 (0)20 7294 2413

www.cityandguilds.com

**City & Guilds is a registered charity
established to promote education
and training**