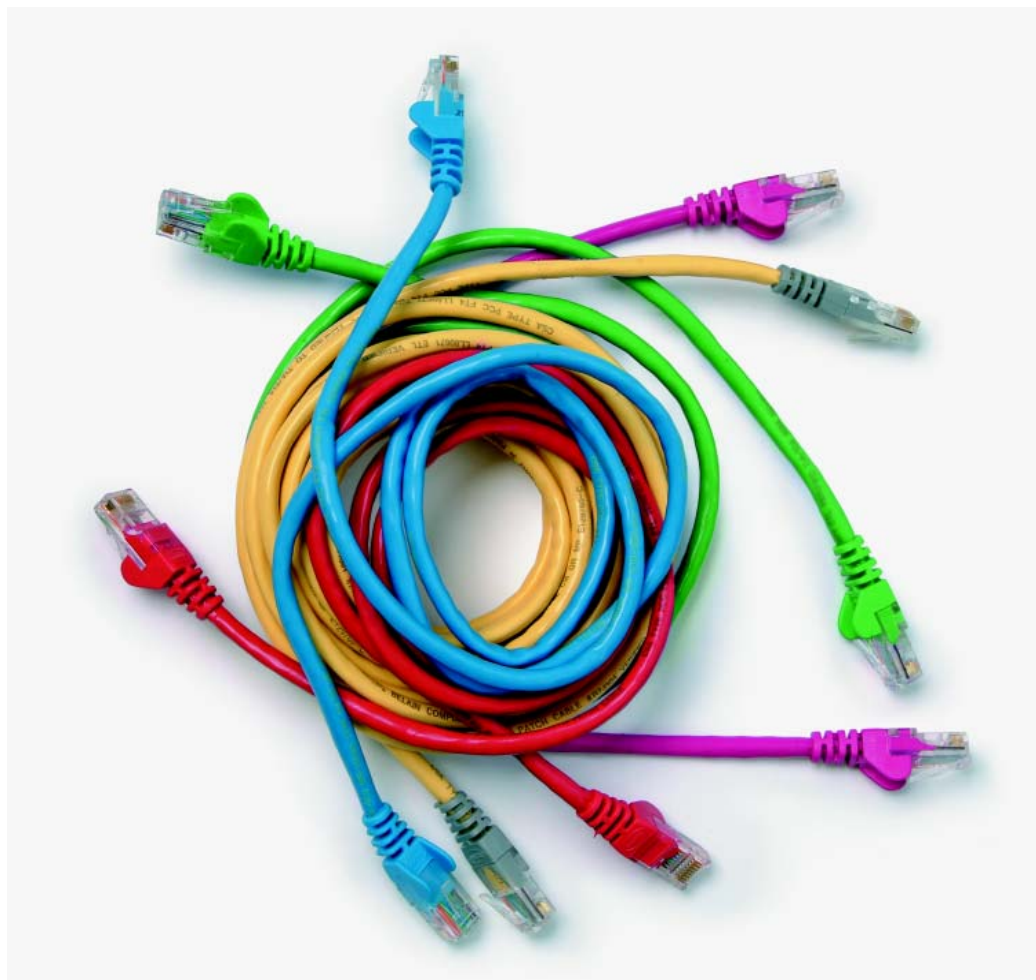


Level 3 Install, configure and integrate networked hardware and software (7540-361)

Systems and Principles (QCF) Assignment guide for Candidates Assignment C



About City & Guilds

City & Guilds is the UK's leading provider of vocational qualifications, offering over 500 awards across a wide range of industries, and progressing from entry level to the highest levels of professional achievement. With over 8500 centres in 100 countries, City & Guilds is recognised by employers worldwide for providing qualifications that offer proof of the skills they need to get the job done.

City & Guilds Group

The City & Guilds Group includes City & Guilds, ILM (the Institute of Leadership & Management) which provides management qualifications, learning materials and membership services, NPTC which offers land-based qualifications and membership services, and HAB (the Hospitality Awarding Body). City & Guilds also manages the Engineering Council Examinations on behalf of the Engineering Council.

Equal opportunities

City & Guilds fully supports the principle of equal opportunities and we are committed to satisfying this principle in all our activities and published material. A copy of our equal opportunities policy statement is available on the City & Guilds website.

Copyright

The content of this document is, unless otherwise indicated, © The City and Guilds of London Institute 2010 and may not be copied, reproduced or distributed without prior written consent.

However, approved City & Guilds centres and learners studying for City & Guilds qualifications may photocopy this document free of charge and/or include a locked PDF version of it on centre intranets on the following conditions:

- centre staff may copy the material only for the purpose of teaching learners working towards a City & Guilds qualification, or for internal administration purposes
- learners may copy the material only for their own use when working towards a City & Guilds qualification

The *Standard Copying Conditions* on the City & Guilds website also apply.

Please note: National Occupational Standards are not © The City and Guilds of London Institute. Please check the conditions upon which they may be copied with the relevant Sector Skills Council.

Publications

City & Guilds publications are available on the City & Guilds website or from our Publications Sales department at the address below or by telephoning +44 (0)20 7294 2850 or faxing +44 (0)20 7294 3387.

Every effort has been made to ensure that the information contained in this publication is true and correct at the time of going to press. However, City & Guilds' products and services are subject to continuous development and improvement and the right is reserved to change products and services from time to time. City & Guilds cannot accept liability for loss or damage arising from the use of information in this publication.

City & Guilds

1 Giltspur Street

London EC1A 9DD

T +44 (0)844 543 0000 (Centres)

T +44 (0)844 543 0033 (Learners)

www.cityandguilds.com

learnersupport@cityandguilds.com

Contents

Level 3 Install, configure and integrate networked hardware and software (7540-361)

Assignment C

Introduction – Information for Candidates	2
Candidate Instructions	3

Level 3 Install, configure and integrate networked hardware and software (7540-361) Assignment C

Introduction – Information for Candidates

About this document

This assignment comprises all of the assessment for Level 3 Install, configure and integrate networked hardware and software (7540-361).

Health and safety

You are asked to consider the importance of safe working practices at all times.

You are responsible for maintaining the safety of others as well as your own. Anyone behaving in an unsafe fashion will be stopped and a suitable warning given. You will **not** be allowed to continue with an assignment if you compromise any of the Health and Safety requirements. This may seem rather strict but, apart from the potentially unpleasant consequences, you must acquire the habits required for the workplace.

Time allowance

The recommended time allowance for this assignment is **3 hours**.

Level 3 Install, configure and integrate networked hardware and software (7540-361)

Candidate Instructions

Time allowance: 3 hours

Assignment set up:

This assignment is made up of **four** tasks:

- Task A – Carry out a risk assessment
- Task B – Configure a workstation to connect to a wireless network
- Task C – Install an Ethernet card
- Task D – Set up permissions for a new group of users

Scenario

You have been asked to install a new PC workstation in a college chemistry teaching laboratory. The room was previously used as an ordinary teaching classroom and was converted to a laboratory some time ago. You have been asked to do a risk assessment before you start and have been told that you can, within reason, choose the time that you do the work. You must, however, fit in with the activities in the room during the installation. Relevant Health and Safety procedures for the room while it is in use will be provided on a separate sheet. A patch panel leading to a network switch has already been installed.

You are expected to use operating system utilities to obtain any information that is required but not provided.

Task A – Carry out a risk assessment

- 1 Using the information provided by the assessor and in the Record of Risk Assessment document, carry out a risk assessment on the room to identify **four** hazards and associated risks that would affect someone performing an IT installation. You may assume that the most recent actions recorded in the document are still in force.
- 2 Enter the details of the assessment and your recommendations on the Record of Risk Assessment. In your record make sure to record any issues that **do not** comply with current legislation

Task B – Configure a workstation to connect to a wireless network

In this task, you are asked to connect up a workstation and configure it to connect to a wireless network.

- 1 Using the work area indicated by the assessor, install the wireless network card into the base unit.
- 2 Connect up the workstation as instructed by the assessor. If necessary, install and configure the wireless network driver software supplied by the assessor. Before installing any software check its integrity.
- 3 Create a post-installation test regime of **five** tests for the upgraded workstation, including the wireless network connection. Write down the details of the tests in the System Test Record provided.
- 4 Carry out the post-installation tests on the system. Enter the results of **each** test in the System Test Record.
- 5 Correct any faults that you find, resolving any problems that you encounter, and enter the details in the 'Action Taken' column of the System Test Record.
- 6 Using the data provided by the assessor, use the operating system networking utility to set up and connect the workstation to the wireless network. Ensure the correct protocol(s) are installed.
- 7 Record all wireless networking configuration settings including MAC addresses, IP addresses and encryption keys on the System Installation Record.

Task C – Install an Ethernet card

Here you are asked to enhance the connectivity by installing an Ethernet card.

- 1 Install the Ethernet card provided by the assessor into the base unit, checking that the new card is compatible with the existing system.
- 2 Re-assemble the base unit and connect up the workstation. Connect the workstation to the network.
- 3 Boot up the workstation, disabling the wireless connection and connect to the network via Ethernet only.
- 4 Make a record of all Ethernet networking configuration settings including MAC addresses and IP addresses.
- 5 Repeat the tests you devised in Task B3 and record the results in the System Test Record..

Task D – Set up permissions for a new group of users

Here you are asked to set up permissions for a new group of users called 'Chemistry'.

- 1 Using the details provided by the assessor, set up a new group of users called 'Chemistry'. The **four** users in the group should be called 'Chemistry 1', 'Chemistry 2', etc. **Each** user should be given a suitable password and access and different permissions applied to each user.
- 2 Test the group settings to verify that each individual has the correct access.

When you have finished working:

- Sign each document above your name and label all removable storage media with your name.
- Hand all paperwork and removable storage media to your assessor.

If the assignment is taken over more than one period, all paperwork and removable media must be returned to the test supervisor at the end of each sitting.

End of assignment

Published by City & Guilds
1 Giltspur Street
London
EC1A 9DD
T +44 (0)844 543 0000 (Centres)
T +44 (0)844 543 0033 (Learners)
www.cityandguilds.com

**City & Guilds is a registered charity
established to promote education
and training**