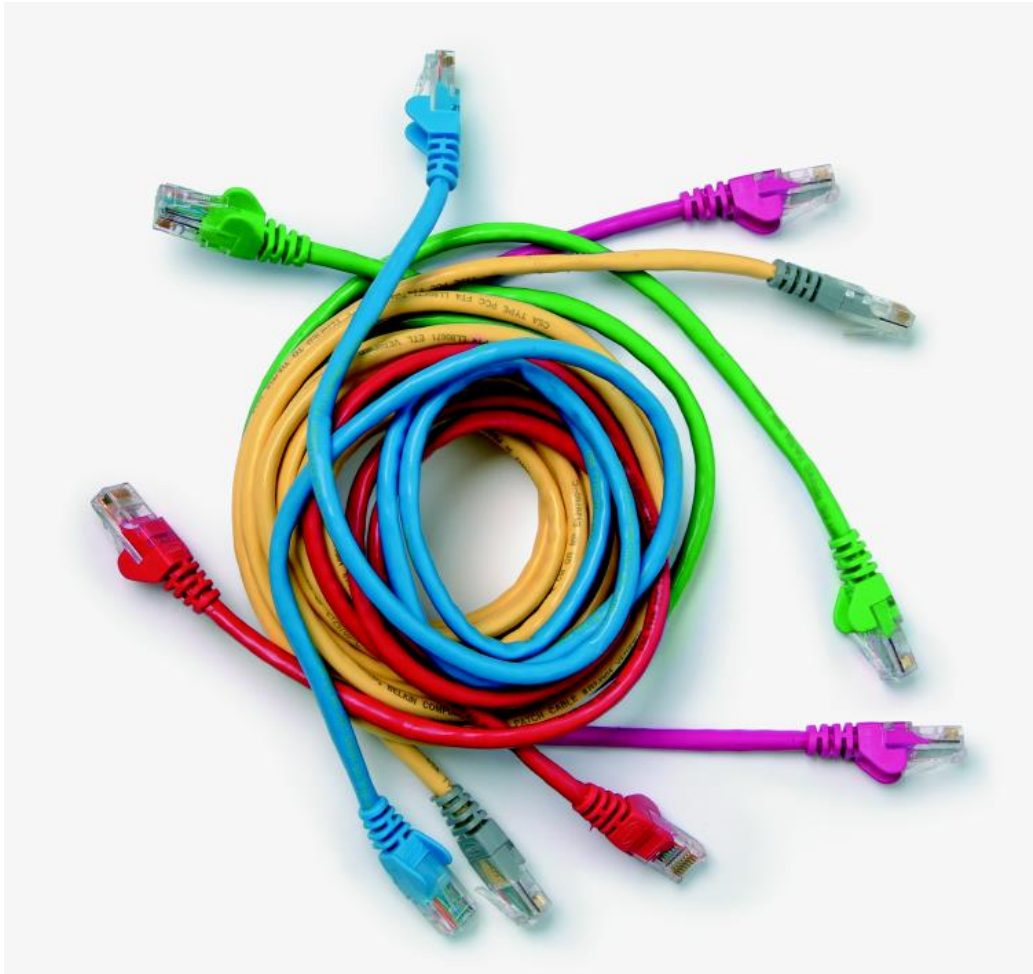


Level 3 Plan for the delivery of ICT support services and assist in the acquisition of ICT systems (7540-364)

Systems and Principles Assignment guide for Candidates Assignment B



About City & Guilds

City & Guilds is the UK's leading provider of vocational qualifications, offering over 500 awards across a wide range of industries, and progressing from entry level to the highest levels of professional achievement. With over 8500 centres in 100 countries, City & Guilds is recognised by employers worldwide for providing qualifications that offer proof of the skills they need to get the job done.

City & Guilds Group

The City & Guilds Group includes City & Guilds, ILM (the Institute of Leadership & Management) which provides management qualifications, learning materials and membership services, NPTC which offers land-based qualifications and membership services, and HAB (the Hospitality Awarding Body). City & Guilds also manages the Engineering Council Examinations on behalf of the Engineering Council.

Equal opportunities

City & Guilds fully supports the principle of equal opportunities and we are committed to satisfying this principle in all our activities and published material. A copy of our equal opportunities policy statement is available on the City & Guilds website.

Copyright

The content of this document is, unless otherwise indicated, © The City and Guilds of London Institute 2010 and may not be copied, reproduced or distributed without prior written consent.

However, approved City & Guilds centres and learners studying for City & Guilds qualifications may photocopy this document free of charge and/or include a locked PDF version of it on centre intranets on the following conditions:

- centre staff may copy the material only for the purpose of teaching learners working towards a City & Guilds qualification, or for internal administration purposes
- learners may copy the material only for their own use when working towards a City & Guilds qualification

The *Standard Copying Conditions* on the City & Guilds website also apply.

Please note: National Occupational Standards are not © The City and Guilds of London Institute. Please check the conditions upon which they may be copied with the relevant Sector Skills Council.

Publications

City & Guilds publications are available on the City & Guilds website or from our Publications Sales department at the address below or by telephoning +44 (0)20 7294 2850 or faxing +44 (0)20 7294 3387.

Every effort has been made to ensure that the information contained in this publication is true and correct at the time of going to press. However, City & Guilds' products and services are subject to continuous development and improvement and the right is reserved to change products and services from time to time. City & Guilds cannot accept liability for loss or damage arising from the use of information in this publication.

City & Guilds

1 Giltspur Street

London EC1A 9DD

T +44 (0)844 543 0000 (Centres)

T +44 (0)844 543 0033 (Learners)

www.cityandguilds.com

learnersupport@cityandguilds.com

Contents

Level 3 Plan for the delivery of ICT support services and assist in the acquisition of ICT systems (7540-364)

Assignment B

Introduction – Information for Candidates	2
Candidate Instructions	3

Level 3 Plan for the delivery of ICT support services and assist in the acquisition of ICT systems (7540-364) Assignment B

Introduction – Information for Candidates

About this document

This assignment comprises part of the assessment for Level 3 Plan for the delivery of ICT support services and assists in the acquisition of ICT systems (7540-364).

Health and safety

You are asked to consider the importance of safe working practices at all times.

You are responsible for maintaining the safety of others as well as your own. Anyone behaving in an unsafe fashion will be stopped and a suitable warning given. You will **not** be allowed to continue with an assignment if you compromise any of the Health and Safety requirements. This may seem rather strict but, apart from the potentially unpleasant consequences, you must acquire the habits required for the workplace.

Time allowance

The recommended time allowance for this assignment is **6 hours**.

Level 3 Plan for the delivery of ICT support services and assist in the acquisition of ICT systems (7540-364)

Candidate Instructions

Time allowance: 6 hours

Assignment set up:

This assignment is made up of **four** tasks:

- Task A – Audit a customer's existing system to produce network connection and security plans
- Task B – Research and evaluate available systems and services and prepare a report on them
- Task C – Research and report on additional services and equipment and prepare an example of a Service Level Agreement (SLA)
- Task D – Develop implementation and contingency plans

Scenario

Since attending a technical training course and learning about customer support provision, you have been looking for an opportunity to use these new skills. Your next-door neighbour is a partner in a small building company. He has been asked to review the existing, very basic, ICT system and make recommendations for improvements.

The building company has 20 employees, of which five work in the office. There is a need to provide all normal commercial services including stock control. The Managing Director would like a laptop computer for use when at home. Many functions, including payroll, are carried out using manual systems.

Your neighbour has asked you to spend a day helping him to make the correct recommendations. He is worried that once the company is fully dependent on ICT, there will be serious consequences in case of failure. You will be given six hours to complete this review and make recommendations.

You will be given details of the tasks to perform. You should carry out these tasks as instructed recording, for assessment purposes, all details of the task.

Task A – Audit a customer’s existing system to produce network connection and security plans

You will be given a peer-to-peer network (two workstations connected to the Internet and a shared printer) with which to work. You should carry out this task on the existing set up.

- 1 Carry out a physical and electronic audit on both workstations, including the network configurations. Record your findings on the ICT System Audit Logs (Hardware and Software).
- 2 Produce network connection audit documentation for the Internet enabled equipment including cable types, connectors and network configuration.

Task B – Research and evaluate available systems and services and prepare a report on them

- 1 Create a document to define details of the customer’s requirements, including:
 - equipment
 - services (maintenance, Internet etc)
 - security.
- 2 Use product specifications to select specific equipment that will satisfy the customer’s requirements for the office. Information gathered should include specifications, availability and cost. Account should be taken of existing equipment, which should be re-used as far as possible. Enter all information gathered into the document produced in Task B1.
- 3 Compile, for the customer, a summary report on a range of possible solutions using the information gathered. Make clear recommendations based on an understanding of the company’s needs regarding:
 - the use and/or disposal of existing equipment
 - new equipment required
 - security measures required
 - contingency planning (including equipment required).
 - existing equipment that could be re-used
 - compatibility
 - system requirements
 - upgrade paths

Task C – Research and report on additional services and equipment and prepare an example of a Service Level Agreement (SLA)

- 1 The customer has asked for advice on establishing a website. Investigate the process of setting up a commercial website. Base your information on **two** different packages from **two** different service providers and compile a brief report giving information on:
 - facilities (number of pages, on-line payment etc)
 - costs
 - benefits
 - reliability
 - potential difficulties.

- 2 Research the company's options for Internet access. Briefly summarise the options, covering:
 - performance
 - security
 - approximate cost.

- 3 Prepare **two** draft SLAs including **one** specification for a basic service, and **one** higher specification service providing support to the proposed system, bearing in mind the nature of the company's business. Include examples of:
 - hardware support
 - software support
 - warranty arrangements
 - preventive maintenance
 - other services that would be normal for this type of organisation.

Task D – Develop implementation and contingency plans

- 1 Create an Outline implementation plan, to illustrate how the changes could be accomplished, include **five** stages. Use appropriate headings to indicate that all possible effects of the changes were considered.
- 2 Using the information in the Outline implementation plan, produce a checklist to
 - assist the customer in assessing the risks
 - help plan for disaster recovery of the system and data.

When you have finished working:

- Sign each document above your name and label all removable storage media with your name.
- Hand all paperwork and removable storage media to your assessor.

If the assignment is taken over more than one period, all paperwork and removable media must be returned to the test supervisor at the end of each sitting.

End of assignment

Published by City & Guilds
1 Giltspur Street
London
EC1A 9DD
T +44 (0)844 543 0000 (Centres)
T +44 (0)844 543 0033 (Learners)
www.cityandguilds.com

City & Guilds is a registered charity
established to promote education
and training