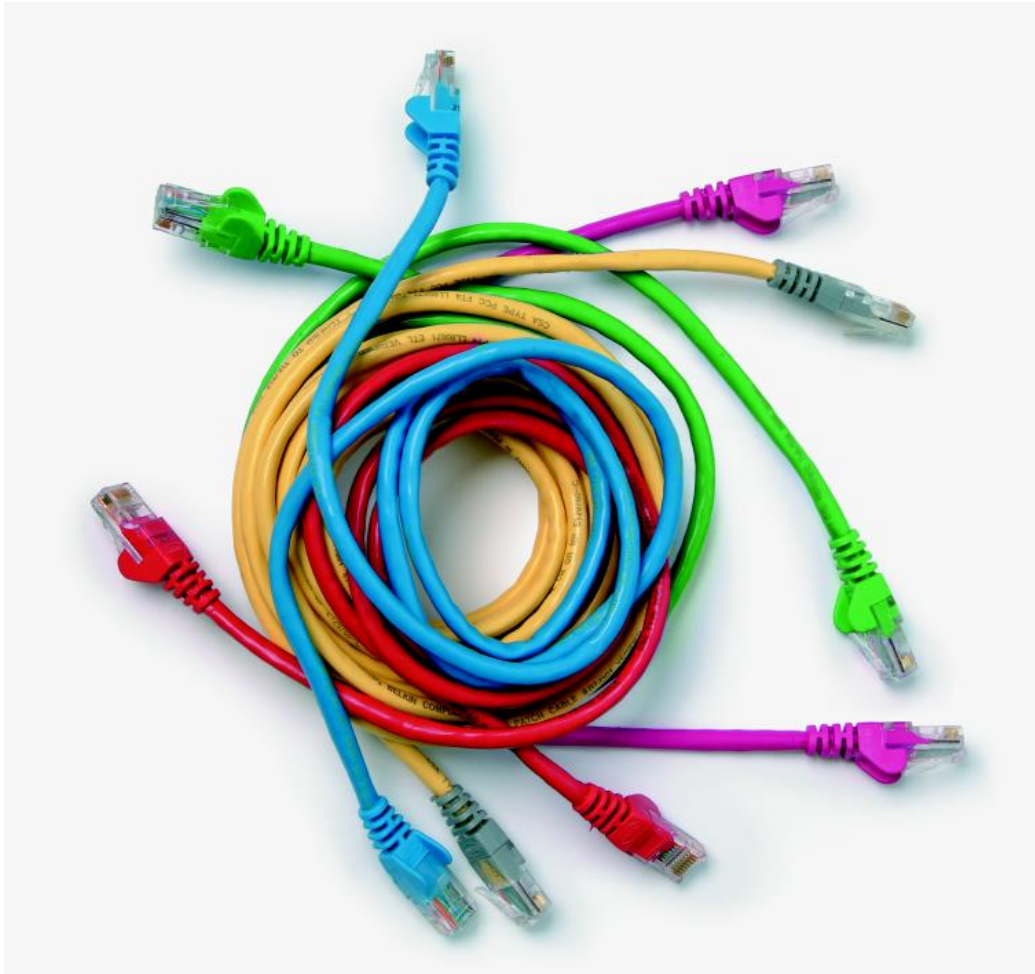


# Level 3 IT consulting skills (7540-390/7630-335)

## Assignment guide for Candidates Assignment B



## **About City & Guilds**

City & Guilds is the UK's leading provider of vocational qualifications, offering over 500 awards across a wide range of industries, and progressing from entry level to the highest levels of professional achievement. With over 8500 centres in 100 countries, City & Guilds is recognised by employers worldwide for providing qualifications that offer proof of the skills they need to get the job done.

## **City & Guilds Group**

The City & Guilds Group includes City & Guilds, ILM (the Institute of Leadership & Management) which provides management qualifications, learning materials and membership services, NPTC which offers land-based qualifications and membership services, and HAB (the Hospitality Awarding Body). City & Guilds also manages the Engineering Council Examinations on behalf of the Engineering Council.

## **Equal opportunities**

City & Guilds fully supports the principle of equal opportunities and we are committed to satisfying this principle in all our activities and published material. A copy of our equal opportunities policy statement is available on the City & Guilds website.

## **Copyright**

The content of this document is, unless otherwise indicated, © The City and Guilds of London Institute 2009 and may not be copied, reproduced or distributed without prior written consent.

However, approved City & Guilds centres and learners studying for City & Guilds qualifications may photocopy this document free of charge and/or include a locked PDF version of it on centre intranets on the following conditions:

- centre staff may copy the material only for the purpose of teaching learners working towards a City & Guilds qualification, or for internal administration purposes
- learners may copy the material only for their own use when working towards a City & Guilds qualification

The *Standard Copying Conditions* on the City & Guilds website also apply.

Please note: National Occupational Standards are not © The City and Guilds of London Institute. Please check the conditions upon which they may be copied with the relevant Sector Skills Council.

## **Publications**

City & Guilds publications are available on the City & Guilds website or from our Publications Sales department at the address below or by telephoning +44 (0)20 7294 2850 or faxing +44 (0)20 7294 3387.

Every effort has been made to ensure that the information contained in this publication is true and correct at the time of going to press. However, City & Guilds' products and services are subject to continuous development and improvement and the right is reserved to change products and services from time to time. City & Guilds cannot accept liability for loss or damage arising from the use of information in this publication.

## **City & Guilds**

**1 Giltspur Street**

**London EC1A 9DD**

**T +44 (0)844 543 0000 (Centres)**

**T +44 (0)844 543 0033 (Learners)**

**[www.cityandguilds.com](http://www.cityandguilds.com)**

**[learnersupport@cityandguilds.com](mailto:learnersupport@cityandguilds.com)**

# Contents

## Unit 7540-390/7630-335 – IT consulting skills

### Assignment B

Introduction – Information for Candidates	2
Level 3 IT consulting skills (7540-390/7630-335)	3
Candidate Instructions	3

# Level 3 IT consulting skills (7540-390/7630-335)

## Assignment B

### Introduction – Information for Candidates

#### About this document

This assignment comprises all of the assessment for Level 3 IT consulting skills (7540-390/7630-335)

---

#### Health and safety

You are asked to consider the importance of safe working practices at all times.

You are responsible for maintaining the safety of others as well as your own. Anyone behaving in an unsafe fashion will be stopped and a suitable warning given. You will **not** be allowed to continue with an assignment if you compromise any of the Health and Safety requirements. This may seem rather strict but, apart from the potentially unpleasant consequences, you must acquire the habits required for the workplace.

#### Time allowance

The recommended time allowance for this assignment is 2 hours and all three tasks must be completed.

## Level 3 IT consulting skills (7540-390/7630-335)

### Candidate Instructions

**Time allowance: 2 hours**

#### **Assignment set up:**

This assignment is made up of **three** tasks

- Task A – Structure a client assignment and identify the key deliverables and acceptance criteria
- Task B – Plan and control the work involved in successfully meeting the objectives
- Task C – Manage the client

#### **Scenario**

BITS Financial Services is an independent company offering financial and mortgage advice to a wide range of clients in Hull and the surrounding area. It employs eight financial advisers with company cars who all have their own client caseload and work out of the company offices in the centre of Hull. As parking is a problem, BITS are leasing ten spaces at a local car park for staff, clients and visitors. This is not sufficient and as most of the financial advisers are in and out the office, they park in the local pay and display car park and BITS pays their parking charges. All the financial advisers live in the surrounding villages, which are situated between 10-12 miles out of the City Centre and they drive every morning to the office for the 9.00am meeting with their Manager.

The Managing Director of BITS has heard about 'home working' and has asked you to help them to introduce this concept for all 8 financial advisers. BITS would like 'home working' to be set up within 6 months of you starting the assignment.

Read all of the instructions carefully and complete the tasks in the order given.

## Task A – Structure a client assignment and identify the key deliverables and acceptance criteria

- 1 Create a document based upon the phases of the consulting cycle which could be used to record the client requirements for the introduction of home working. The document should have section headings that demonstrate that all key phases of the consulting cycle have been considered.
- 2 Using the given scenario, fill in the document you have created in Task 1 listing the
  - **eight** management deliverables at each phase of the cycle
  - **three** essential roles that need to be in place.
- 3 Using the scenario complete the statement of work document by providing examples against each heading. You should contribute from your own experience where the information is not evident in the scenario.
- 4 Produce a brief report which includes
  - the business case for the introduction of home working
  - a process flow diagram containing **two** data flows and **three** processes
  - the identification of **three** key stakeholders
  - **two** different benefits for **each** identified key stakeholder

## Task B – Plan and control the work involved in successfully meeting the objectives

- 1 Prepare a product breakdown structure which shows
  - **three** technical products
  - **two** management products
  - **one** quality product.
- 2 Produce a schedule of work for the consulting assignment incorporating a GANTT chart or similar technique, which identifies **eight** tasks. List **three** of the tasks on to a critical path.

## Task C – Manage the client

- 1 Produce either a brief report or a 5 minute presentation which includes
  - the schedule of work
  - a progress statement
  - **two** success criteria
  - the questioning techniques used to obtain information
  - an indication how success and bad news would be communicated differently.

When you have finished working:

- Sign each document above your name and label all removable storage media with your name.
- Hand all paperwork and removable storage media to your assessor.

If the assignment is taken over more than one period, all paperwork and removable media must be returned to the test supervisor at the end of each sitting.

**End of assignment**

---

**Published by City & Guilds**  
**1 Giltspur Street**  
**London**  
**EC1A 9DD**  
**T +44 (0)844 543 0000 (Centres)**  
**T +44 (0)844 543 0033 (Learners)**  
**[www.cityandguilds.com](http://www.cityandguilds.com)**

**City & Guilds is a registered charity**  
**established to promote education**  
**and training**