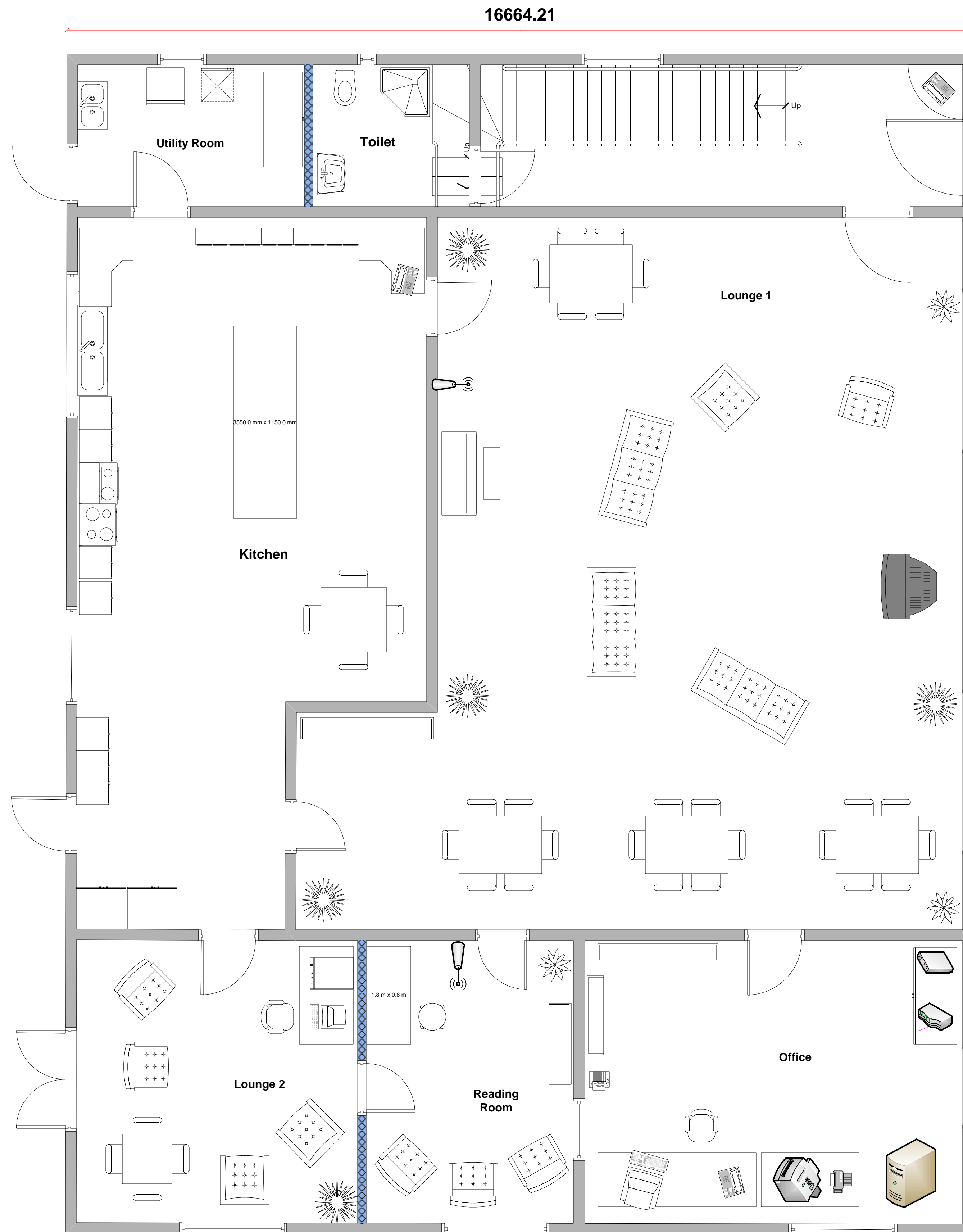
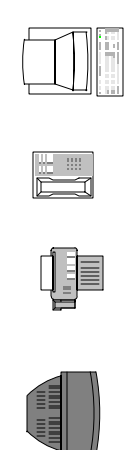


First Floor



Ground Floor

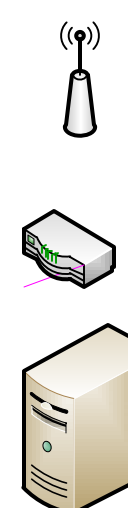
Key



PC  
Telephone  
Fax Machine  
Television



Multi-Function Device  
Paper Shredder  
Modem



Wireless Access Point  
Router  
Server

Floor to ceiling Height  
= 2900 mm  
  
Inter-floor thickness  
= 300mm

All walls are of solid (i.e. brick ) construction except  
those coloured **blue** and "**cross hatched**" – which are  
**stud partition walls**

21714.50

Measurements in  
'mm'

Telephone  
Connection  
[POP]