

# 310

---

## Make and style a hair addition

In this unit, you will be making a simple hair addition, using the wig-making technique of weaving a weft.

This requires you to be skilful with your hands, as making a hair addition involves intricate work. You will create a mood board, which will show how you plan to include the addition in the hairstyle. You will then showcase your hair addition to an audience, demonstrating the creative skills you have gained.

# Assignment mark sheet

## Unit 310 Make and style a hair addition

Your assessor will mark you on each of the practical tasks in this unit. This page is used to work out your overall grade for the unit. You must pass **all** parts of the tasks to be able to claim a grade. For the practical task a pass equals 1 point, a merit equals 2 points and a distinction equals 3 points.

What you must know	Tick when complete
Task 1a: produce a report	
Task 1b: produce a report	
Task 1c: produce a mood board	
<b>Or</b> tick if covered by an online test	

What you must do	Grade	Points
Task 2: demonstration/produce a woven weft of hair		
<b>Overall grade</b>		

Candidate name:

Candidate signature: Date:

Assessor signature: Date:

Quality assurance co-ordinator signature (where applicable): Date:

External Verifier signature (where applicable): Date:

## What does it mean?

Some useful words are explained below

Images courtesy of Balmain



### Aftercare advice

The client will require advice on the maintenance of the hair piece, how often to return for visits, the correct use of heated electrical equipment, and how to clean the hair piece.

Image courtesy of Thinkstock

### Diamond mesh

Also known as a honeycomb mesh. An arrangement of weft (including a fine wire), appears in a diamond shaped pattern.

### Frisure forcee

The permanent curling of woven wefts.

### Hackle

A metal plate with rows of pointed needles used to blend or straighten hair. This tool is used as a preliminary step in the process of wig making.

### Jockey clip

Used on the silks in weaving to prevent the end knot loosening.

### Knot

The point of intertwining and tying of hairs to a net or gauze foundation.

### Marteau weft

A postiche made with flat sewn weft, with two loops at each end, by which it can be secured using pins or grips. The weft can be mounted onto a hair slide, hair comb or postiche clip.

### Mood board

A type of poster design that consists of colours, images, text, and samples of materials, etc, in a work of art.

### Pin curl weft

A small postiche of curls woven and secured to a hairpin for easy attachment to the head.

Image courtesy of Thinkstock/Thomas Northcut



### Pin wave

A small wavy postiche woven and secured to a hairpin for easy attachment to the head.



### Synthetic hair

Hair that is not real. This can only be washed in soapy water, and must be left to dry naturally.

### Toupee

A partial hairpiece, providing hair replacement only over a defined area.

### Two string fly weft

This is the finest of all weaving and when it is finished the roots fly away, leaving a neat finish.

### Weaving frame

The right- and left-hand weaving sticks in position on the workbench with the weaving silks affixed.

### Weaving silk

The string of cotton or silk upon which the hair is woven.

### Weaving wire

Thin, malleable wire used in place of a third silk in the weaving process.

### Weft

A length of hair woven on silks.



### Wig

Provides full scalp coverage that replaces a natural head of hair.

## What you must know

### You must be able to:

- 1 Describe how to develop a mood board
- 2 Outline the purpose of a mood board
- 3 Outline how to present a mood board, which incorporates hair additions, accessories and ornamentation
- 4 Describe the main styles of wigs and hair additions used in historical civilisations and cultures
- 5 Explain how wigs and hair additions are used in modern society
- 6 Describe the employment opportunities for wig making and hair additions specialists
- 7 Describe the influencing factors that need to be considered when creating a hair addition
- 8 Describe how to maintain hair additions
- 9 Describe hair styling techniques for hair additions for men and women
- 10 Describe the aftercare advice that should be provided
- 11 Outline safe and hygienic working practices
- 12 State how to communicate and behave within a salon environment

#### Revision tip

Wigs and hair additions are used in modern society for a temporary change of image.



### Be the next... Gali



From a young age, Gali had an interest and fascination with wigs and hairpieces. Starting with hairdressing as a foundation, Gali studied at Vidal Sassoon Institute for Hairdressing. After graduating, Gali went on to specialise in all aspects of wig making, cutting, and styling. Gali now owns and runs her own wig manufacturing company, Gali Wigs London Ltd. [Follow the blue quotes to read her advice!](#)



Image courtesy of The Manchester College



*Advise your client on the correct maintenance, styling and finishing products to use at home.*



*A long flowing wave can be achieved with hair additions.*

Image courtesy of From Great Lengths

# Hair ad



*Hairpieces and additions can enhance the overall appearance of the style.*

“

*Only use high quality shampoo and conditioner – it's still very important, even though the hair is no longer growing.*

Image courtesy of Balmain

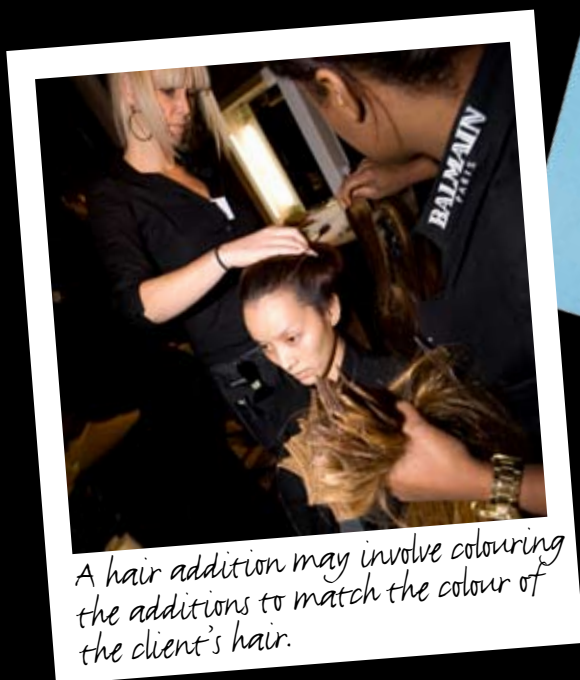
Image courtesy of Balmain

Effective communication is paramount. Use positive body language and good eye contact throughout the service.



# Additions

Image courtesy of Balmain



Carry out health and safety checks of tools and equipment within your own area of responsibility.

# What you must do

## Practical observations

This page shows what you need to do during your practical task. You can look at it beforehand, but you're **not** allowed to have it with you while carrying out your practical task. You must achieve **all** the criteria; you can achieve 1 mark, 2 marks or 3 marks for the criteria indicated with **\***.

- 1 Develop a plan for delivery \*
- 2 Select the appropriate environment and materials required for the demonstration
- 3 Demonstrate good communication skills in the delivery of the demonstration \*
- 4 Include a variety of demonstration methods during the demonstration \*
- 5 Include an introduction and summary in the demonstration
- 6 Invite and receive feedback from the audience
- 7 Produce a woven weft of hair
- 8 Style weft by perming and/or colouring
- 9 Style the weft according to the desired result
- 10 Evaluate the results of the finished look
- 11 Provide suitable aftercare advice
- 12 Communicate and behave in a professional manner \*
- 13 Follow safe and hygienic working practices

Totals

Grade

Candidate signature and date

Assessor signature and date

### Conversion chart

Grade	Marks
Pass	13–14
Merit	15–18
Distinction	19–21

Hair addition service		
Observation 1 Demonstration		
1	2	3
1		
1	2	3
1	2	3
1		
1		
Observation 2 Produce and style a weft		
1		
1		
1		
1		
1	2	3
1		



## What you must do

### Practical observations descriptors table

This table shows what you need to do to achieve 1, 2 or 3 marks for the criteria indicated with \* on the previous page.

	1 mark	2 marks	3 marks
<b>1 Produce a plan for the demonstration</b>	A simple plan giving basic details of the demonstration	A clear plan with timings, materials and equipment required, the use of support materials, and the basic objectives to be achieved	A comprehensive plan for the demonstration giving detailed timings, materials and equipment required, the use of support materials, methods of demonstration, objectives to be achieved and methods to achieve the objectives
<b>3 Demonstrate good communication skills in the delivery of the demonstration</b>	Uses verbal and non-verbal communication and limited eye contact with the audience	Uses good verbal and non-verbal communication, maintaining eye contact and positive body language. Speech is clear and interesting and this is maintained throughout	Uses excellent verbal and non-verbal communication, maintaining eye contact and positive body language. Speech is clear and interesting and this is maintained throughout. The audience is encouraged to ask questions and receives clear answers
<b>4 Include a variety of demonstration methods during the demonstration</b>	Uses a variety of resources Examples: mood board, verbal explanation	Uses a good variety of resources Examples: mood board, verbal explanation, handouts, support materials	Uses an excellent variety of resources Examples: mood board, verbal explanation, handouts, products, samples, support materials, questions and answers

*Continues on next page*



*After washing, brush hair into its style.  
This will simplify the styling.*

## What you must do

### Practical observations descriptors table (continued)

This table shows what you need to do to achieve 1, 2 or 3 marks for the criteria indicated with \* on page 8.

	1 mark	2 marks	3 marks
<b>12 Communicate and behave in a professional manner</b>	Satisfactory communication and behaviour Examples: polite, friendly, positive body language, speaks clearly	Good communication and behaviour Examples: polite, friendly, positive body language, speaks clearly, respectful to colleagues and clients, listens and responds to client needs	Excellent communication and behaviour Examples: polite, friendly, positive body language, speaks clearly, respectful to colleagues and clients, listens and responds to client's needs, shows a reassuring and confident manner

“

*When washing, allow water to run down the natural hair shaft direction; don't scrub the hair; use only a downward motion to spread the shampoo and conditioner.*



Image courtesy of Anne Veck

## Comment form

### Unit 310 Make and style a hair addition

This form can be used to record comments by you, your client, or your assessor.

---

---

---

---

---

---

---

---

Image courtesy of From Great Lengths



#### Revision tip

The employment opportunities that are available in the wig industry are: wig maker, knoter, making judges' and barristers' wigs, factory wig maker, working in the theatre/film/television industry, hair stylist to maintain wigs.



*Allow the wig to dry naturally – overnight if possible. Do not blow dry or use other appliances on wet hair.*