
GBI assist with shaving

Barbering is an exciting and expanding area within the hairdressing industry. This unit introduces you to shaving services by explaining how to correctly prepare the skin. If the skin is not properly prepared it may be damaged during the shave, or the shaving process

could be uncomfortable for the client. You will learn the importance of massage, the effects of using hot and cold towels and how to use the right products. This is a luxurious service for men and one they will really benefit from – so ensure the pampering starts here!



Unit GB1 (City & Guilds Unit 011)

Assist with shaving services

Optional

This unit has two outcomes. You could be observed by your assessor for both during the same client service, or they may be assessed for different services.

Outcome 1

Maintain effective and safe methods of working when assisting with shaving services

Outcome 2

Prepare facial hair and skin for shaving services



Evidence requirements

You must practically demonstrate in your everyday work that you have met the standard for assisting with shaving services. The standards cover things that you must do (performance criteria), things that you must cover (range) and things that you must know.

What you must do

Your assessor will observe your performance on at least **two** occasions. You must do correctly all the things listed under 'What you must do' on the sign-off sheets that follow.

Simulation is not allowed for any performance evidence within this unit. It is likely most evidence of your performance will be gathered from observations made by your assessor, but you may be required to produce other evidence to support your performance if your assessor has not been present.

What you must cover

You will see key words in bold on the 'What you must do' list. For each of these, there is a range of things that you must cover. You must show that you have:

Used both of the following lathering products:

creams

oils

Carried out both of the following lathering techniques:

application by brush

application by massage

What you must know

You will be assessed on your knowledge of the following:

Salon and legal requirements

How to work safely, effectively and hygienically when assisting with shaving services

Basic science

Products, equipment and their use

Lathering techniques

This will be completed through written and oral questioning by your assessor. For details of what you must know, see pages 9–11.



Working up a thick lather is essential to the client's comfort.



Assist with shaving

Useful words

Some terms that you will come across in this unit are explained below.

Cross-contamination When micro-organisms are allowed to come into contact with a surface/substance.

Cross-infection When the carrier of a disease passes it to someone else.

Disinfection A chemical used to prevent the growth of micro-organisms.

Hazardous waste Waste products such as tissues contaminated with blood. These need to be correctly disposed of to avoid cross-infection.

Lather A product applied before shaving to help cleanse the beard and lubricate the skin, allowing the razor to glide more easily.

Shaving brushes Often made of Badger hair and used to lather and apply shaving products.

Shaving creams A moisturising product designed to create a thick lather. These must be applied before shaving.

Shaving oils Oils specially designed for application before shaving. They lubricate and moisturise the face.

Sterilisation A method of destroying micro-organisms. Heat, chemicals and ultra-violet rays are all good methods of sterilisation.

Hints and tips

Using the right products for skin will ensure it stays hydrated and looks healthy.



Observation sign-off sheet

Unit GB1 Assist with shaving services

What you must do

Within your work, you must show your assessor that you can do the following. You will be observed a number of times (as a guide, at least **twice**).

Each time you achieve **all** the points listed within a single client service, your assessor will tick the circle and enter the date.



Outcome 1

Maintain effective and safe methods of working when assisting with shaving services

- a Ensure your client's clothing is effectively protected throughout the service
- b Wear personal protective equipment when assisting with shaving
- c Position your client to meet the needs of the service without causing them discomfort
- d Ensure your own posture and position whilst working minimises fatigue and the risk of injury
- e Keep your work area clean and tidy throughout the service
- f Use working methods that:
 - minimise the wastage of **lathering products**
 - minimise the risk of cross-infection
 - make effective use of your working time
 - ensure the use of clean resources
 - minimise the risk of harm or injury to yourself and clients

Continues on next page

“
A professional lathering application must only cover the beard area, and not the client's clothes, hair, floor or ceiling!
Maurice Lister

”

- g Clean, disinfect and/or sterilise all tools and equipment immediately after the shaving service
- h Ensure that hazardous waste is disposed of to meet legal and salon requirements
- i Ensure your personal standards of health and hygiene minimise the risk of cross-infection, infestation and offence to your clients and colleagues
- j Identify and promptly report any shaving items in need of re-ordering to the relevant person *



Assist with shaving

Observation	1	2		
Achieved	<input type="radio"/>	<input type="radio"/>	<input type="radio"/>	<input type="radio"/>
Date				
Candidate signature				
Assessor signature				
IQA signature (if sampled)				
EQA signature (if sampled)				

* Covered by observation Date _____

Covered by oral questioning Date _____

Continues on next page

“
Used lather should be treated as hazardous waste.
 Maurice Lister
 ”

Hints and tips

A post-shave cooling lotion will help to take the burn out of skin after shaving.



Observation sign-off sheet

Unit GB1 Assist with shaving services

What you must do (continued)

Outcome 2

Prepare facial hair and skin for shaving services

- a Prepare hot and cold towels, following instructions from the stylist
- b Apply hot towels to suit the needs of the service and the comfort of your client, following the instructions from the stylist
- c Prepare **lathering products** so they are fit for use in time for the shaving service
- d Apply **lathering products** in a way that takes account of factors identified by the stylist
- e Apply **lathering products** in a way that minimises the risk of the **product** being spread to your client's eyes, clothes and surrounding area
- f Use **lathering techniques** which achieve an even coverage of **product** to the areas to be shaved
- g Promptly inform the stylist when the client is ready for shaving
- h Promptly refer any problems to the relevant person for action *
- i Leave your client's skin free from **lathering products** after the shaving service
- j Cool your client's skin after shaving when face massage is not required
- k Leave your client's skin free from excess moisture at the end of the service



Observation	1	2		
Achieved	<input type="radio"/>	<input type="radio"/>	<input type="radio"/>	<input type="radio"/>
Date				
Candidate signature				
Assessor signature				
IQA signature (if sampled)				
EQA signature (if sampled)				

* Covered by observation Date _____
 Covered by oral questioning Date _____

Observation sign-off sheet

Unit GBI Assist with shaving services

What you must cover



Assist with shaving

Before ticking the circles below, you must make sure that you have achieved 'What you must cover' in **all** the outcomes in which it occurs.

Lathering products Tick the lathering products used in each observation. You must use **both**.

	1	2		
Creams	<input type="radio"/>	<input type="radio"/>	<input type="radio"/>	<input type="radio"/>
Oils	<input type="radio"/>	<input type="radio"/>	<input type="radio"/>	<input type="radio"/>

Lathering techniques Tick the lathering techniques used in each observation. You must use **both**.

	1	2		
Application by brush	<input type="radio"/>	<input type="radio"/>	<input type="radio"/>	<input type="radio"/>
Application by massage	<input type="radio"/>	<input type="radio"/>	<input type="radio"/>	<input type="radio"/>

Observation	1	2		
Achieved	<input type="radio"/>	<input type="radio"/>	<input type="radio"/>	<input type="radio"/>
Date				
Candidate signature				
Assessor signature				
IQA signature (if sampled)				
EQA signature (if sampled)				



The position of your client is crucial to ensure an effective service.

Hints and tips

Using a good quality shaving brush will help to ensure lather is applied evenly.



Comment form

Unit GBI

This form can be used to record oral questioning, or for assessor/candidate comments, if required.

Comments

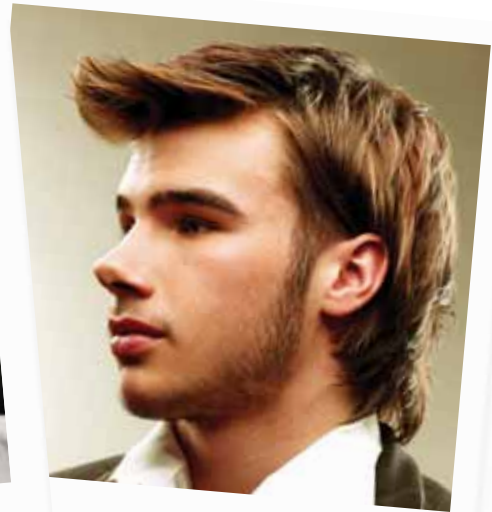
Date

1

2



Facial hair can be styled in many different ways.



Knowledge sign-off sheet

Unit GBI Assist with shaving services

What you must know



Assist with shaving

9

You need to understand:	Evidence type
Salon and legal requirements	
1 Your salon's requirements for client preparation	E3
2 Your salon's and legal requirements for disposal of hazardous waste	E3
3 The person to whom you should report problems	E3
4 Your own responsibilities under the current Control of Substances Hazardous to Health Regulations in relation to the use of shaving products	E3
How to work safely, effectively and hygienically when assisting with shaving services	
5 What contact dermatitis is and how to avoid developing it whilst assisting with shaving services	E3
6 The range of protective equipment that should be available for clients	E3
7 The type of personal protective equipment available	E3
8 Why it is important to use personal protective equipment	E4
9 How the position of your client and yourself can affect the desired outcome and reduce fatigue and the risk of injury	E3
10 Why it is important to position your tools, products and materials for ease of use	E3
11 The importance of using the correct type of barber's chair for shaving services	E3

Continues on next page

You will be assessed on your knowledge and understanding of all the following points. This will be completed by your assessor, either through oral or written questions (evidence type E3) or a mandatory written paper (evidence type E4). Either of these could be an online test. The form tells you which evidence type is needed for each point. Your mandatory test papers will be kept by your assessor, so they won't appear in your portfolio.

Some areas appear in more than one unit (shaded in darker green). These are covered in a cross-unit knowledge test. You only need to be tested on these once.

Once you have been assessed on each point, you can fill in the date and reference any written evidence that you've put in your portfolio.



Knowledge sign-off sheet

Unit GB1 Assist with shaving services

What you must know (continued)

You need to understand:	Evidence type
12 The safety considerations which must be taken into account when using lathering products and hot towels	E3
13 Why it is important to keep your work area clean and tidy	E3
14 Methods of working safely and hygienically and which minimise the risk of cross-infection and cross-infestation	E3
15 The importance of personal hygiene	E3
16 Methods of cleaning, disinfecting and/or sterilisation used in salons	E3
Basic science	
17 The effect of hot and cold towels on the skin and hair	E4
18 The importance of lathering and its effect on skin and hair	E4
19 The function of effleurage and petrissage massage techniques when lathering	E4
Products, equipment and their use	
20 How to prepare and use hot and cold towels	E3
21 How to prepare and use lathering products correctly	E3
22 The manufacturers' instructions for the use of lathering products and why it is important they are followed	E3
23 Why timing is critical to the shaving service	E4
24 The types and causes of problems that may occur when assisting with shaving services	E3

Continues on next page



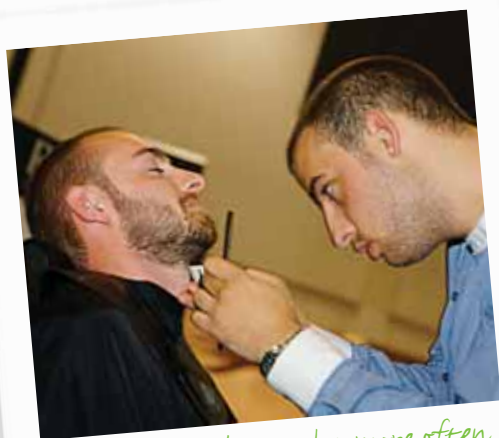
You need to understand:	Evidence type
Lathering techniques	
25 When, why and how to use brush and massage techniques when applying lathering products	E3
26 How to remove lathering products effectively and why this is important	E3
Tick if E3 was an online test	<input type="radio"/> Date
Tick if E4 was an online test	<input type="radio"/> Date
Tick if E3 was a written test	<input type="radio"/> Date
Tick if E4 was a written test	<input type="radio"/> Date
Tick if cross-unit knowledge test was an online test	<input type="radio"/> Date
Tick cross-unit knowledge	<input type="radio"/> Date



Assist with shaving

Hints and tips

Good quality shaving products will help to soften the beard, making the skin more comfortable and the shave smoother.



Men need to shave a lot more often than get a haircut, so a good service will ensure plenty of business!

Image courtesy of Adam Sloan at Big Yin



Supplementary notes

Unit GBI

Your assessor may use this space for any additional comments they may have about your work.

Comments

Date

Unit sign-off

This section must be signed when the unit is complete.

We confirm that this evidence is authentic and the assessments were conducted under specified conditions and that all the performance criteria, range and essential knowledge requirements have been met for this unit.

Candidate signature

Date

Assessor signature

Date

IQA signature
(if sampled)

Date

EQA signature
(if sampled)

Date



Image courtesy of Jamie Stevens

Unit GB1 (City & Guilds Unit 011)

Assist with shaving services

Optional

About City & Guilds

City & Guilds is the UK's leading provider of vocational qualifications, offering more than 500 awards across a wide range of industries, and progressing from entry level to the highest levels of professional achievement. With over 8500 centres in 100 countries, City & Guilds is recognised by employers worldwide for providing qualifications that offer proof of the skills they need to get the job done.

Equal opportunities

City & Guilds fully supports the principle of equal opportunities and we are committed to satisfying this principle in all our activities and published material. A copy of our equal opportunities policy statement is available on the City & Guilds website.

Copyright

The content of this document is, unless otherwise indicated, © The City and Guilds of London Institute 2009. All rights reserved. City & Guilds is a trademark of the City and Guilds of London Institute.

Please note: National Occupational Standards are © Consumer Services Industry Authority. Please check the conditions upon which they may be copied with Habia.

First edition 2008
Revised edition 2009

Publications

For information about or to order City & Guilds support materials, contact 0844 534 0000 or centresupport@cityandguilds.com. You can find more information about the materials we have available at www.cityandguilds.com/publications.

Every effort has been made to ensure that the information contained in this publication is true and correct at the time of going to press. However, City & Guilds' products and services are subject to continuous development and improvement and the right is reserved to change products and services from time to time. City & Guilds cannot accept liability for loss or damage arising from the use of information in this publication.

City & Guilds
1 Giltspur Street
London EC1A 9DD
T 0844 543 0033
www.cityandguilds.com
publishingfeedback@cityandguilds.com

Page layout design by Purpose
Implementation by Kate Lyons
Edited by Tom Guy, Rachel Howells and Emily Ayers
Special thanks to Diane Mitchell

