

Functional Skills Mathematics

Entry 3 sample assessment

Candidate's paper

Bedroom

Length of test 1 hour 30 minutes

You should have

- paper, pens and pencils
- a 30cm ruler with millimetres
- a calculator
- an information pack
- a calendar

Candidate's name:

City & Guilds enrolment number:

Date of registration:

Date assessment started:

Date assessment completed:

Candidate's declaration:

I confirm that this assessment is my own work

Candidate's signature _____ Date _____

Task 1

You want a new look for your bedroom.

You will buy

- a new wardrobe that is wider than your old one
- a desk with drawers
- a chair.

The width of your old wardrobe is 100 cm.
Choose furniture you can afford.

You have saved up £130 and your friend gives you £40 for your old wardrobe.
You also have some vouchers (see the information pack).

1a How much money do you have including your vouchers? 3 marks
Show your working.

1b Check your calculation. 1 mark
Show your check.

- 2 Make a shopping list of the things you will buy, the model, the prices and the total cost. 6 marks

Total marks 10

Task 2

You need to order the furniture and sort out the delivery.

You pay $\frac{1}{4}$ of the total cost now.

You must pay the rest of the cost when the furniture is delivered.

1a How much money do you pay now?

2 marks

1b Check your calculation.
Show your check.

1 mark

The furniture shop delivers to different places on different days.

Delivery days and time slots	
We deliver to this town/area	on this day
	Monday
	Tuesday
	Wednesday
	Thursday
	Friday
Delivery time slots: 7am-9am 1pm-3pm 9am-11am 3pm-5pm 11am-1pm 5pm-7pm	

The shop says they will deliver your furniture **next week**.

2a Which town or area do you live in?

2b What date will the shop deliver your furniture?
(Use your calendar).

2 marks

You have some things to do next week. You cannot change the things in your diary.



2c Choose a delivery time slot for your furniture.
Give a reason for your choice.

3 marks

You have already paid $\frac{1}{4}$ of the total cost for your furniture.

2d How much money must you pay when they deliver the furniture?

2 marks

2e Check your calculation.
Show your check.

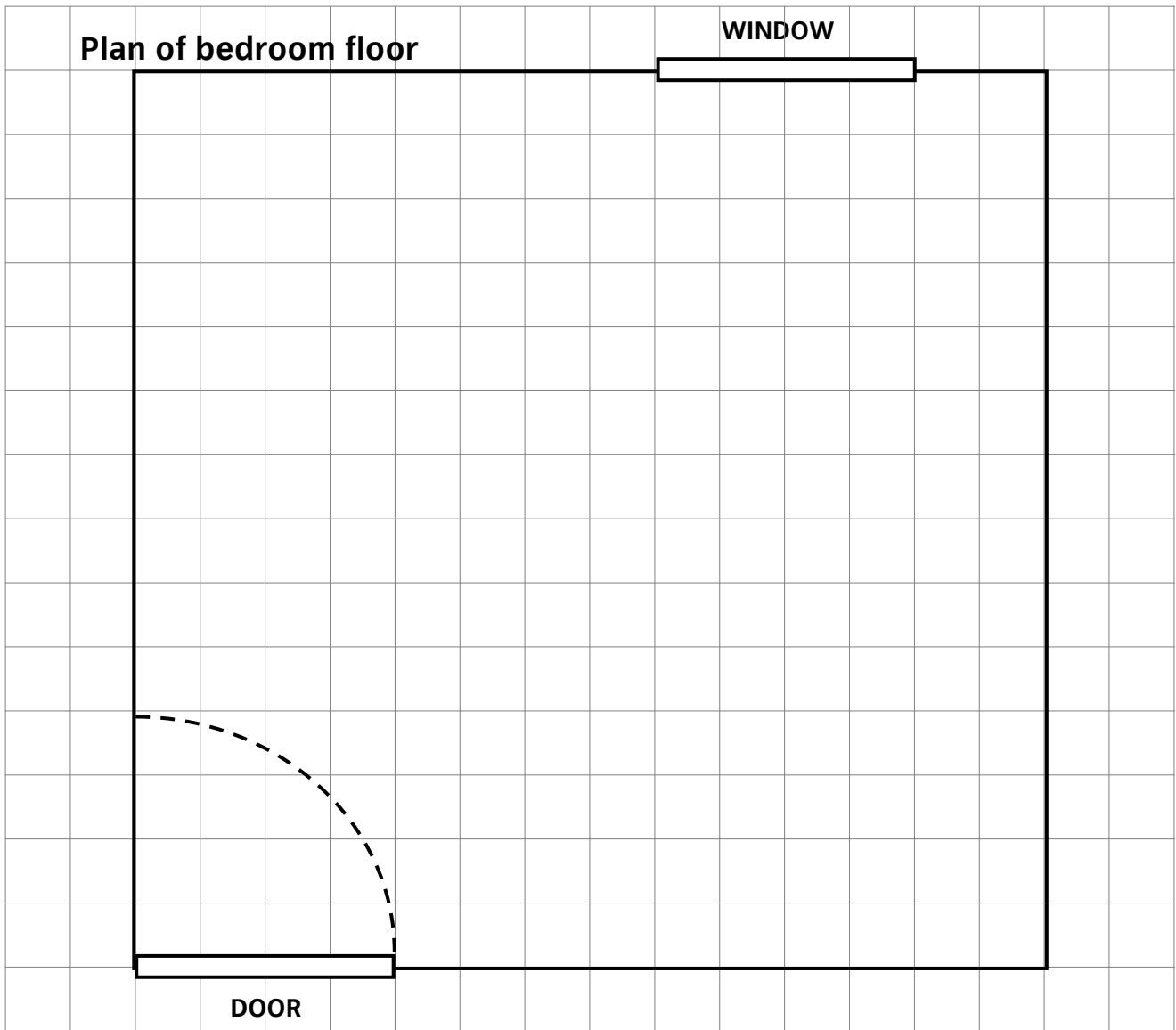
1 mark

Total marks 11

Task 3

Decide where to put your furniture.

- 1a Draw your bed in one of the corners against a wall. 3 marks
The length of your bed is about half the length of your bedroom wall.
Draw a rectangle to show where your bed will go.



- 1b Draw **two** more rectangles **smaller** than your bed to show where you will put:
• your new wardrobe
• your new desk 2 marks
- 1c Label the furniture clearly on the plan. 1 mark

Your desk is flat packed. You need to put it together.

These are the **small** screws that came in the box.



- 2 Do you have the right number of small screws in the box?
Show your working.
Explain your answer.

3 marks

Total marks 9

End of assessment

Published by City & Guilds
1 Giltspur Street
London
EC1A 9DD
T +44 (0)844 543 0000
F +44 (0)20 7294 2413
www.cityandguilds.com

City & Guilds is a registered charity
established to promote education and
training