

Level 2 Essential Application of Number Skills

Sample confirmatory test 3

Maximum duration: 45 minutes

Important note

This is a sample confirmatory test for the reviewed qualification for September 2022, developed jointly by the four Essential Skills Wales awarding bodies (Agored Cymru, City & Guilds, Pearson and WJEC).

This sample test is an update of sample set 3. It has been updated to reflect the revision to the Design Principles to be implemented in 2022.

A separate document, containing the answer keys and specification references is also available.

This confirmatory test consists of 20 multiple choice questions.

Questions 1 to 5 are about a weekend break.

1 A family is planning to stay overnight in a hotel. These are the choices they have found.

Hotel	Rating	Wifi	TV	Double Room	Single Room
Beachdale	☆☆☆☆	✓	✓	£85.00	£55.00
Commodore	☆☆☆	✓	✗	£55.00	£40.00
Delton	☆☆☆	✗	✓	£47.00	£28.00
Easby	☆☆☆	✓	✗	£53.00	£45.00
Farrenvale	☆☆	✓	✓	£35.00	£32.00
Glen Marsh	☆☆	✓	✓	£35.00	£35.00

They want to stay in a hotel with more than a two star rating, with WiFi connection. They want to book one double room and one single room.

Which hotel is the cheapest?

- a Commodore
- b Delton
- c Easby
- d Farrenvale

2 This is the timetable of the train service they will use.

Departure times from Beldon

Beldon	07:45	09:45	11:45	and then every 2 hours until	21:45
Crossbridge	08:18	10:18	12:18		22:18
Bentley Vale	08:37	10:37	12:37		22:37
Wendsea	09:10	11:10	13:10		23:10

How long is the train journey from Crossbridge to Wendsea?

- a 42 mins
- b 52 mins
- c 1 hr 15 mins
- d 1 hr 25 mins

- 3 The family are travelling from Crossbridge to Wendsea.
They need to arrive before 4:30pm.
They will use this train timetable.

Departure times from Beldon

Beldon	07:45	09:45	11:45	and then every 2 hours until	21:45
Crossbridge	08:18	10:18	12:18		22:18
Bentley Vale	08:37	10:37	12:37		22:37
Wendsea	09:10	11:10	13:10		23:10

What is the latest train they can get?

- a 1:45 pm
 - b 2:18 pm
 - c 3:18 pm
 - d 4:18 pm
- 4 The family wants to go to the theatre. These are the ticket prices:

Adult tickets £18
Each child gets a discount of $\frac{1}{3}$ off the adult price.

There are 2 adults and 1 child.

What is the total cost of the tickets?

- a £42
 - b £48
 - c £60
 - d £66
- 5 The show starts at 7:30 pm.
There are 2 parts of the show.
Each part of the show lasts for 55 minutes.
There is an interval of 20 minutes.

At what time does the show finish?

- a 9:00 pm
- b 9:20 pm
- c 9:40 pm
- d 0:00 pm

Questions 6 to 10 are about a craft fair.

6 This table shows the number of gift boxes sold at a craft fair.

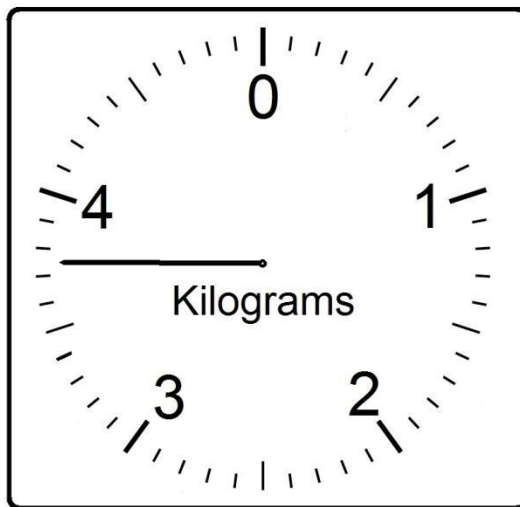
Sales of Gift Boxes

Month	Number of Boxes	
	Standard	Large
May	18	22
June	26	18
July	22	20

What is the difference between the mean number of standard boxes sold per month and the mean number of large boxes sold per month?

- a 0
- b 1
- c 2
- d 3

7 The gift boxes are weighed before they are packaged.



This diagram shows the weight of **100** gift boxes.

What is the weight of **one** gift box **in grams**?

- a 3.75 g
- b 4.25 g
- c 37.5 g
- d 42.5 g

8 A stall sells home-made biscuits.

A standard pack has 255 grams of biscuits.

The weight of biscuits in a special offer pack is $\frac{2}{3}$ more than a standard pack.

What is the weight of biscuits in a special offer pack?

- a 170 g
- b 322 g
- c 340 g
- d 425 g

9 A gift box contains 28 chocolates and 21 toffees.

What is the ratio of chocolates to toffees in the gift box?

- a 3:2
- b 7:3
- c 4:3
- d 3:4

10 Necklaces are made to sell at the craft market. This formula is used to calculate how many beads are used on a necklace.

$$n = \frac{c}{b} - 2.5$$

where n = number of beads
c = length of the necklace (cm)
b = length of bead (cm)

One necklace is 57 cm long.

The beads used are 1.2 cm long.

How many beads are used on this necklace?

- a 42
- b 45
- c 47
- d 48

Questions 11 to 15 are about paying bills.

11 Your monthly wage is £400
Your bills for the month total £240

What fraction of your monthly wage goes on bills?

- a $\frac{3}{5}$
- b $\frac{1}{2}$
- c $\frac{3}{4}$
- d $\frac{2}{3}$

12 You buy insurance for your car.
You can make one single payment of £335 or 12 monthly payments of £32.65

How much more does it cost in total to make 12 monthly payments?

- a £46.80
- b £56.80
- c £64.80
- d £66.80

13 You drive your car for work.
The table shows the journeys you make each month of the year.

	Total distance per journey (miles)	Number of times per month
Journey A	104	2
Journey B	17	7

What is the total distance you drive in 12 months?

- a 3 444 miles
- b 3 804 miles
- c 3 924 miles
- d 4 164 miles

- 14 You receive a bill for goods you have purchased from the USA.
This is the exchange rate.

$$1 \text{ British Pound} = 1.45 \text{ US Dollars}$$

The bill is for 29 dollars.

How much is 29 dollars in pounds?

- a £42.05
 - b £38.05
 - c £20.00
 - d £15.00
- 15 This formula is used to find the total cost of electricity used in one quarter (3 months).

$$t = \frac{np}{100} + \frac{s}{4}$$

where

t = total cost (£)

n = number of units used

p = cost per unit (pence)

s = annual standing charge (£)

You have used 800 units in this quarter.

The cost per unit is 10.35 pence.

The annual standing charge is £90

What is the cost of electricity for this quarter?

- a £43.20
- b £105.30
- c £172.80
- d £850.50

Questions 16 to 20 are about decorating a bedroom.

16 You want to put up a shelf in the bedroom.

Use this information:

$$1 \text{ foot (ft)} = 12 \text{ inches (in)}$$

$$1 \text{ inch (in)} = 2.5 \text{ cm}$$

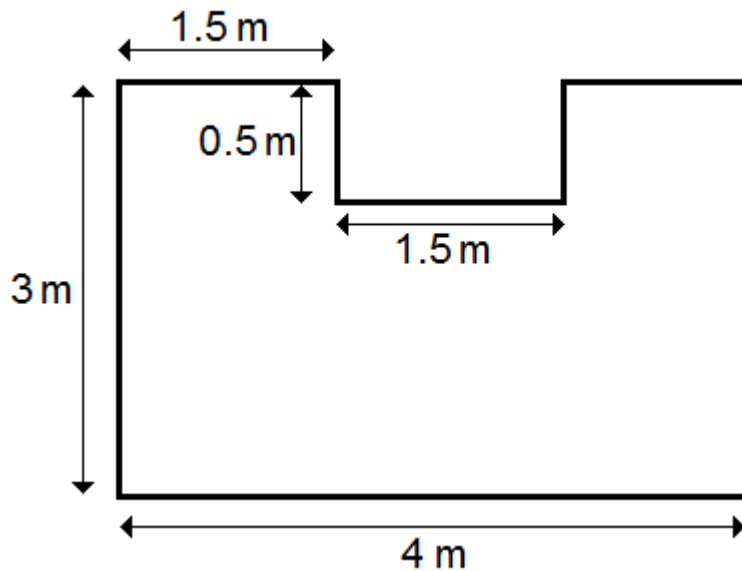
The length of the shelf is 3 ft 6 in.

What is the length of the shelf in cm?

- a 51 cm
- b 96 cm
- c 105 cm
- d 108 cm

17 You want to put a new carpet in the bedroom.

What is the area of the bedroom floor?



- a 10 m^2
- b 10.5 m^2
- c 11.25 m^2
- d 12.75 m^2

18 The price of the carpet is reduced by 35%.

Which fraction is the same as 35%?

- a $\frac{7}{20}$
- b $\frac{3}{5}$
- c $\frac{2}{5}$
- d $\frac{1}{3}$

19 The full price of a different carpet is £3.60 per square metre.

The price is reduced by 15% in a sale.

What is the price per square metre in the sale?

- a £3.45
- b £3.24
- c £3.16
- d £3.06

20 You want to paint the bedroom walls.

Paint Coverage

2.5 litres of paint will cover 30 m²

You need enough paint to cover 75 m²

How much paint do you need?

- a 4.25 litres
- b 5.5 litres
- c 6.25 litres
- d 7.0 litres