

Sgiliau Cymhwyso Rhif Hanfodol Lefel 2

Prawf cadarnhaol enghreifftiol

Amser i'w gwblhau: 45 munud

Mae'r prawf cadarnhaol hwn yn cynnwys 20 cwestiwn amlddewis.

Level 2 Essential Application of Number Skills

Sample confirmatory test 3

Maximum duration: 45 minutes

Important note

This is a sample confirmatory test for the reviewed qualification for September 2022, developed jointly by the four Essential Skills Wales awarding bodies (Agored Cymru, City & Guilds, Pearson and WJEC).

This sample test is an update of sample set 3. It has been updated to reflect the revision to the Design Principles to be implemented in 2022.

A separate document, containing the answer keys and specification references is also available.

This confirmatory test consists of 20 multiple choice questions.

Mae cwestiynau 1 i 5 yn sôn am wyliau penwythnos.

1 Mae teulu'n cynllunio i aros dros nos mewn gwesty. Dyma'r dewisiadau maen nhw wedi eu gweld.

Gwesty	Sêr	Wifi	Teledu	Ystafell Ddwbl	Ystafell Sengl
Beachdale	☆☆☆☆	✓	✓	£85.00	£55.00
Commodore	☆☆☆	✓	x	£55.00	£40.00
Delton	☆☆☆	x	✓	£47.00	£28.00
Easby	☆☆☆	✓	x	£53.00	£45.00
Farrenvale	☆☆	✓	✓	£35.00	£32.00
Glen Marsh	☆☆	✓	✓	£35.00	£35.00

Maen nhw eisiau aros mewn gwesty sydd â mwy na dwy seren, a chysylltiad WiFi. Maen nhw eisiau archebu un ystafell ddwbl ac un ystafell sengl.

Pa westy yw'r un rhataf?

- a Commodore
- b Delton
- c Easby
- d Farrenvale

Questions 1 to 5 are about a weekend break.

1 A family is planning to stay overnight in a hotel. These are the choices they have found.

Hotel	Rating	Wifi	TV	Double Room	Single Room
Beachdale	☆☆☆☆	✓	✓	£85.00	£55.00
Commodore	☆☆☆	✓	✗	£55.00	£40.00
Delton	☆☆☆	✗	✓	£47.00	£28.00
Easby	☆☆☆	✓	✗	£53.00	£45.00
Farrenvale	☆☆	✓	✓	£35.00	£32.00
Glen Marsh	☆☆	✓	✓	£35.00	£35.00

They want to stay in a hotel with more than a two star rating, with WiFi connection. They want to book one double room and one single room.

Which hotel is the cheapest?

- a Commodore
- b Delton
- c Easby
- d Farrenvale

2 Dyma amserlen y gwasanaeth trenau maen nhw'n mynd i'w ddefnyddio.

Amseroedd gadael o Beldon

Beldon	07:45	09:45	11:45	ac yna bob 2 awr tan	21:45
Crossbridge	08:18	10:18	12:18		22:18
Bently Vale	08:37	10:37	12:37		22:37
Wendsea	09:10	11:10	13:10		23:10

Pa mor hir yw'r daith trên o Crossbridge i Wendsea?

- a 42 munud
 - b 52 munud
 - c 1 awr 15 munud
 - d 1 awr 25 munud
-

2 This is the timetable of the train service they will use.

Departure times from Beldon

Beldon	07:45	09:45	11:45	and then every 2 hours until	21:45
Crossbridge	08:18	10:18	12:18		22:18
Bentley Vale	08:37	10:37	12:37		22:37
Wendsea	09:10	11:10	13:10		23:10

How long is the train journey from Crossbridge to Wendsea?

- a 42 mins
- b 52 mins
- c 1 hr 15 mins
- d 1 hr 25 mins

- 3 Mae'r teulu'n teithio o Crossbridge i Wendsea.
Mae angen iddyn nhw gyrraedd cyn 4:30 pm.
Maen nhw'n mynd i ddefnyddio'r amserlen drenau hon.

Amseroedd gadael o Beldon

Beldon	07:45	09:45	11:45	ac yna bob 2 awr tan	21:45
Crossbridge	08:18	10:18	12:18		22:18
Bently Vale	08:37	10:37	12:37		22:37
Wendsea	09:10	11:10	13:10		23:10

Pa drên yw'r un hwyraf y gallen nhw ei ddal?

- a 1:45 pm
- b 2:18 pm
- c 3:18 pm
- d 4:18 pm

- 3 The family are travelling from Crossbridge to Wendsea.
They need to arrive before 4:30pm.
They will use this train timetable.

Departure times from Beldon

Beldon	07:45	09:45	11:45	and then every 2 hours until	21:45
Crossbridge	08:18	10:18	12:18		22:18
Bentley Vale	08:37	10:37	12:37		22:37
Wendsea	09:10	11:10	13:10		23:10

What is the latest train they can get?

- a 1:45 pm
- b 2:18 pm
- c 3:18 pm
- d 4:18 pm

4 Mae'r teulu eisiau mynd i'r theatr. Dyma brisiau'r tocynnau:

Tocynnau oedolion £18

mae pob plentyn yn cael disgownt o $\frac{1}{3}$ oddi ar y pris ar gyfer oedolion

Mae 2 oedolyn ac 1 plentyn.

Beth ydy cyfanswm cost y tocynnau?

- a £42
- b £48
- c £60
- d £66

4 The family wants to go to the theatre. These are the ticket prices:

Adult tickets £18

Each child gets a discount of $\frac{1}{3}$ off the adult price.

There are 2 adults and 1 child.

What is the total cost of the tickets?

- a £42
- b £48
- c £60
- d £66

5 Mae'r sioe yn dechrau am 7:30pm.
Mae 2 ran i'r sioe.
Mae pob rhan o'r sioe yn para am 55 munud.
Mae toriad o 20 munud yn y canol.

Faint o'r gloch fydd y sioe yn gorffen?

- a 9:00 pm
 - b 9:20 pm
 - c 9:40 pm
 - d 10:00 pm
-

5 The show starts at 7:30 pm.
There are 2 parts of the show.
Each part of the show lasts for 55 minutes.
There is an interval of 20 minutes.

At what time does the show finish?

- a 9:00 pm
- b 9:20 pm
- c 9:40 pm
- d 10:00 pm

Mae cwestiynau 6 i 10 yn sôn am ffair grefftau.

6 Mae'r tabl hwn yn dangos nifer y blychau rhodd a gafodd eu gwerthu mewn ffair grefftau.

Gwerthiant Blychau Rhodd

Mis	Nifer y Blychau	
	Arferol	Mawr
Mai	18	22
Mehefin	26	18
Gorffennaf	22	20

Beth yw'r gwahaniaeth rhwng nifer cymedrig y blychau rhodd arferol a gafodd eu gwerthu bob mis a nifer cymedrig y blychau rhodd mawr a gafodd eu gwerthu bob mis?

- a 0
 - b 1
 - c 2
 - d 3
-

Questions 6 to 10 are about a craft fair.

6 This table shows the number of gift boxes sold at a craft fair.

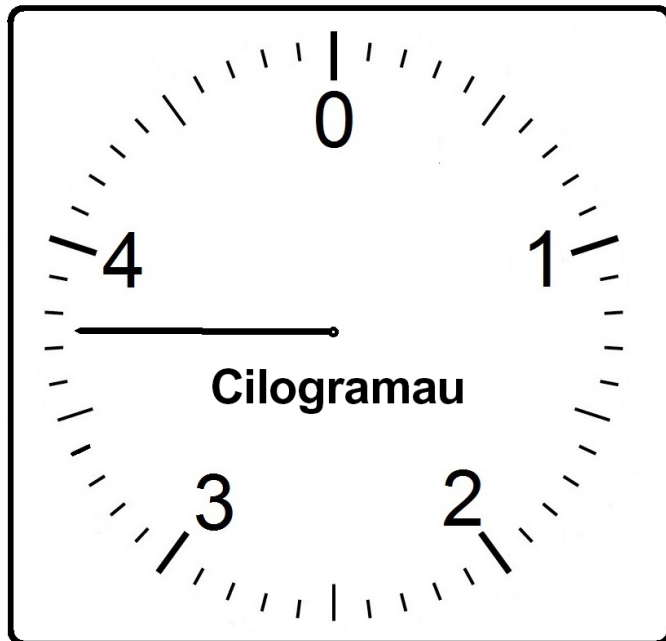
Sales of Gift Boxes

Month	Number of Boxes	
	Standard	Large
May	18	22
June	26	18
July	22	20

What is the difference between the mean number of standard boxes sold per month and the mean number of large boxes sold per month?

- a 0
- b 1
- c 2
- d 3

7 Mae'r blychau rhodd yn cael eu pwysu cyn eu pacio.

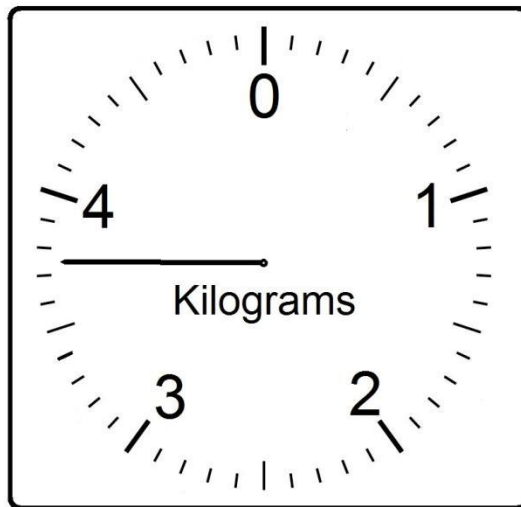


Mae'r diagram hwn yn dangos pwysau **100** o flychau rhodd.

Beth yw pwysau **un** blwch rhodd **mewn gram**?

- a 3.75 g
- b 4.25 g
- c 37.5 g
- d 42.5 g

7 The gift boxes are weighed before they are packaged.



This diagram shows the weight of **100** gift boxes.

What is the weight of **one** gift box **in grams**?

- a 3.75 g
- b 4.25 g
- c 37.5 g
- d 42.5 g

8 Mae stondin yn gwerthu bisgedi cartref.

Mae pecyn arferol yn cynnwys 255 gram o fisgedi.

Mae pwysau bisgedi mewn pecyn cynnig arbennig yn $\frac{2}{3}$ yn fwy na phecyn arferol.

Beth yw pwysau bisgedi mewn pecyn cynnig arbennig?

- a 170 g
 - b 322 g
 - c 340 g
 - d 425 g
-

8 A stall sells home-made biscuits.

A standard pack has 255 grams of biscuits.

The weight of biscuits in a special offer pack is $\frac{2}{3}$ more than a standard pack.

What is the weight of biscuits in a special offer pack?

- a 170 g
- b 322 g
- c 340 g
- d 425 g

9 Mae pob blwch rhodd yn cynnwys 28 siocled a 21 taffi.

Beth yw cymhareb y siocledi i'r taffis yn y blwch rhodd?

- a 3:2
 - b 7:3
 - c 4:3
 - d 3:4
-

9 A gift box contains 28 chocolates and 21 toffees.

What is the ratio of chocolates to toffees in the gift box?

- a 3:2
- b 7:3
- c 4:3
- d 3:4

10 Mae cadwyni'n cael eu gwneud i'w gwerthu yn y farchnad grefftau. Mae'r fformiwla hon yn cael ei defnyddio i gyfrifo sawl glain (*bead*) sy'n cael eu defnyddio ar un o'r cadwyni hyn.

$$n = \frac{c}{b} - 2.5$$

n = nifer y gleiniau (*beads*)

c = hyd y gadwen (cm)

b = hyd y glain (cm)

Mae un gadwen yn 57 cm o hyd.

Mae'r gleiniau sy'n cael eu defnyddio'n 1.2 cm o hyd.

Sawl glain sy'n cael eu defnyddio ar y gadwen hon?

- a 42
- b 45
- c 47
- d 48

10 Necklaces are made to sell at the craft market. This formula is used to calculate how many beads are used on a necklace.

$$n = \frac{c}{b} - 2.5$$

where n = number of beads

c = length of the necklace (cm)

b = length of bead (cm)

One necklace is 57 cm long.

The beads used are 1.2 cm long.

How many beads are used on this necklace?

- a 42
- b 45
- c 47
- d 48

Mae cwestiynau 11 i 15 yn sôn am dalu biliau.

11 Eich cyflog misol yw £400
Cyfanswm eich biliau am y mis yw £240

Pa ffracsiwn o'ch cyflog misol sy'n mynd ar dalu biliau?

- a $\frac{3}{5}$
- b $\frac{1}{2}$
- c $\frac{3}{4}$
- d $\frac{2}{3}$

Questions 11 to 15 are about paying bills.

11 Your monthly wage is £400
Your bills for the month total £240

What fraction of your monthly wage goes on bills?

- a $\frac{3}{5}$
- b $\frac{1}{2}$
- c $\frac{3}{4}$
- d $\frac{2}{3}$

12 Rydych chi'n prynu yswiriant ar gyfer eich car.
Gallwch wneud un taliad o £335 neu 12 taliad misol o £32.65

Faint yn fwy mae'n ei gostio i wneud 12 taliad misol?

- a £46.80
 - b £56.80
 - c £64.80
 - d £66.80
-

12 You buy insurance for your car.
You can make one single payment of £335 or 12 monthly payments of £32.65

How much more does it cost in total to make 12 monthly payments?

- a £46.80
- b £56.80
- c £64.80
- d £66.80

13 Rydych chi'n defnyddio eich car ar gyfer gwaith.
Mae'r tabl yn dangos y teithiau yr ydych yn eu gwneud bob mis o'r flwyddyn.

	Cyfanswm pellter pob taith (milliroedd)	Nifer o weithiau'r mis
Taith A	104	2
Taith B	17	7

Beth yw cyfanswm y pellter rydych yn ei yrru mewn 12 mis?

- a 3 444 milltir
 - b 3 804 milltir
 - c 3 924 milltir
 - d 4 164 milltir
-

13 You drive your car for work.
The table shows the journeys you make each month of the year.

	Total distance per journey (miles)	Number of times per month
Journey A	104	2
Journey B	17	7

What is the total distance you drive in 12 months?

- a 3 444 miles
- b 3 804 miles
- c 3 924 miles
- d 4 164 miles

14 Rydych yn derbyn bil am nwyddau y gwnaethoch eu prynu o UDA. Dyma'r gyfradd gyfnewid.

1 Punt Brydeinig = 1.45 Doler UDA

29 doler yw'r bil.

Faint yw 29 doler mewn punnoedd?

- a £42.05
 - b £38.05
 - c £20.00
 - d £15.00
-

14 You receive a bill for goods you have purchased from the USA. This is the exchange rate.

1 British Pound = 1.45 US Dollars

The bill is for 29 dollars.

How much is 29 dollars in pounds?

- a £42.05
- b £38.05
- c £20.00
- d £15.00

15 Mae'r fformiwla hon yn cael ei defnyddio i ganfod cyfanswm cost y trydan sy'n cael ei ddefnyddio mewn un chwarter (3 mis).

$$t = \frac{nc}{100} + \frac{s}{4}$$

t = cyfanswm y gost (£)

n = nifer yr unedau a gafodd eu defnyddio

c = cost fesul uned (ceiniog)

s = tâl sefydlog bob blwyddyn (£)

Rydych wedi defnyddio 800 uned yn y chwarter hwn.

Y gost fesul uned yw 10.35 ceiniog.

Y tâl sefydlog bob blwyddyn yw £90.

Beth yw cost y trydan ar gyfer y chwarter hwn?

- a £43.20
- b £105.30
- c £172.80
- d £850.50

15 This formula is used to find the total cost of electricity used in one quarter (3 months).

$$t = \frac{np}{100} + \frac{s}{4}$$

where

- t = total cost (£)
- n = number of units used
- p = cost per unit (pence)
- s = annual standing charge (£)

You have used 800 units in this quarter.
The cost per unit is 10.35 pence.
The annual standing charge is £90

What is the cost of electricity for this quarter?

- a £43.20
- b £105.30
- c £172.80
- d £850.50

Mae cwestiynau 16 i 20 yn sôn am addurno ystafell wely.

16 Rydych chi eisiau gosod silff yn yr ystafell wely.

Defnyddiwch yr wybodaeth hon:

$$1 \text{ droedfedd (tr)} = 12 \text{ modfedd (mod)}$$

$$1 \text{ fodfedd (mod)} = 2.5 \text{ cm}$$

Hyd y silff yw 3 tr 6 mod.

Beth yw hyd y silff mewn cm?

- a 51 cm
 - b 96 cm
 - c 105 cm
 - d 108 cm
-

Questions 16 to 20 are about decorating a bedroom.

16 You want to put up a shelf in the bedroom.

Use this information:

$$1 \text{ foot (ft)} = 12 \text{ inches (in)}$$

$$1 \text{ inch (in)} = 2.5 \text{ cm}$$

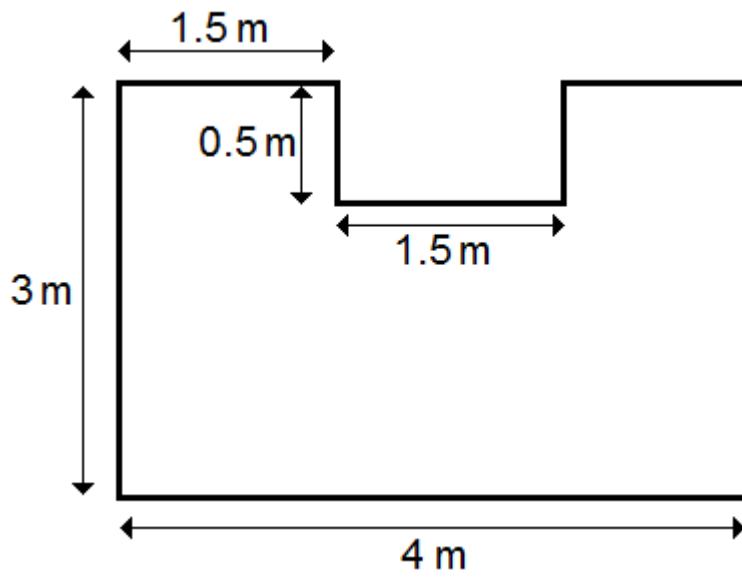
The length of the shelf is 3 ft 6 in.

What is the length of the shelf in cm?

- a 51 cm
- b 96 cm
- c 105 cm
- d 108 cm

17 Rydych chi eisiau rhoi carped newydd yn yr ystafell wely.

Beth yw arwynebedd llawr yr ystafell wely?



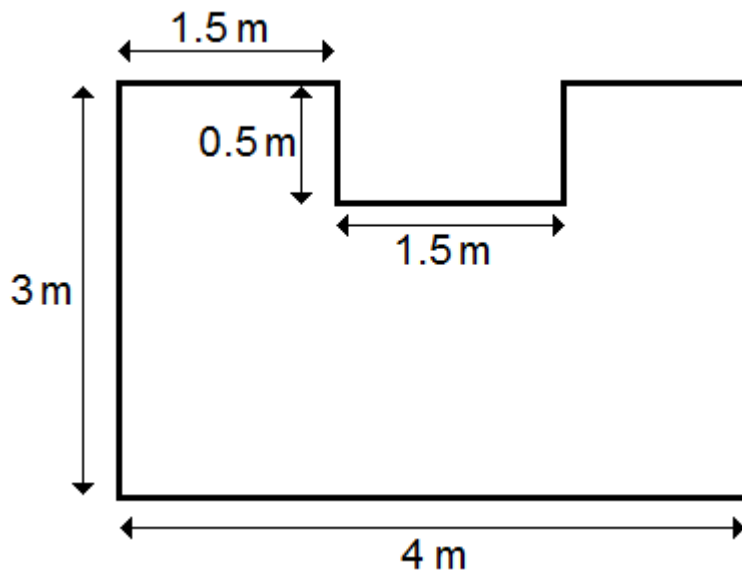
Nid yw'r diagram wedi'i luniadu wrth raddfa

- a 10 m^2
- b 10.5 m^2
- c 11.25 m^2
- d 12.75 m^2

17 You want to put a new carpet in the bedroom.

What is the area of the bedroom floor?

Diagram not drawn to scale



- a 10 m^2
- b 10.5 m^2
- c 11.25 m^2
- d 12.75 m^2

18 Mae pris y carped yn cael ei ostwng 35%.

Pa ffracsiwn sydd yr un peth a 35%?

a $\frac{7}{20}$

b $\frac{3}{5}$

c $\frac{2}{5}$

d $\frac{1}{3}$

18 The price of the carpet is reduced by 35%.

Which fraction is the same as 35%?

a $\frac{7}{20}$

b $\frac{3}{5}$

c $\frac{2}{5}$

d $\frac{1}{3}$

19 Pris llawn y carped yw £3.60 fesul metr sgwâr.

Mae gostyngiad o 15% ar y pris mewn sêl.

Beth yw'r pris fesul metr sgwâr yn y sêl?

- a £3.45
 - b £3.24
 - c £3.16
 - d £3.06
-

19 The full price of a different carpet is £3.60 per square metre.

The price is reduced by 15% in a sale.

What is the price per square metre in the sale?

- a £3.45
- b £3.24
- c £3.16
- d £3.06

20 Rydych chi eisiau peintio waliau'r ystafell wely.

Gorchudd Paent

Bydd 2.5 litr o baent yn gorchuddio 30 m²

Mae arnoch chi angen digon o baent i orchuddio 75 m².

Faint o baent sydd ei angen arnoch chi?

- a 4.25 litr
- b 5.5 litr
- c 6.25 litr
- d 7.0 litr

20 You want to paint the bedroom walls.

Paint Coverage

2.5 litres of paint will cover 30 m²

You need enough paint to cover 75 m²

How much paint do you need?

- a 4.25 litres
- b 5.5 litres
- c 6.25 litres
- d 7.0 litres