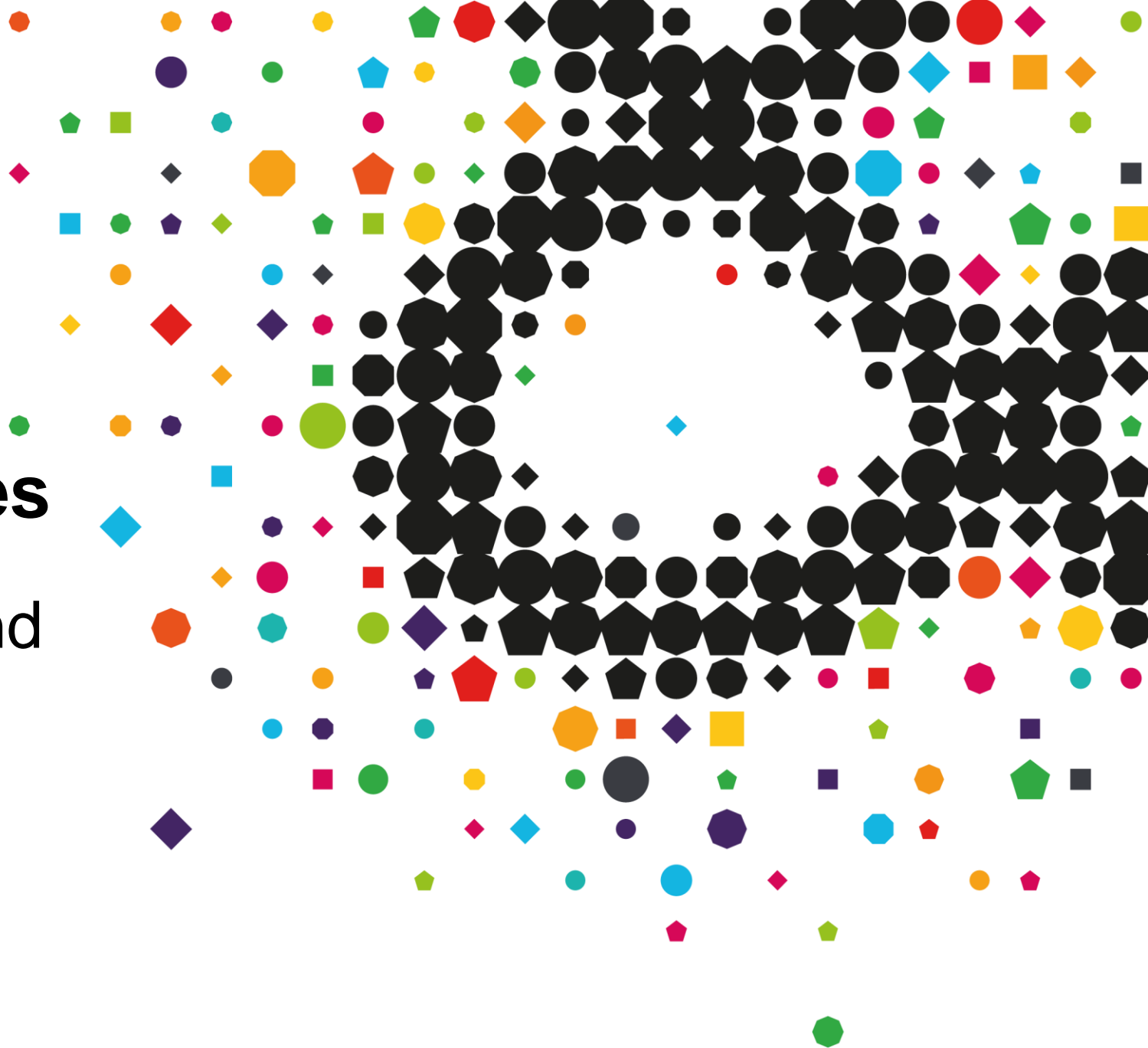


Construction & Utilities

Streetworks Excavation and Reinstatement

6167 Scheme



Our unique portfolio is solely focused on helping people **into a job, on the job, and into the next job**

City&Guilds Group

Technical
training



Training specialist in engineering and technology

Corporate learning



Elearning, compliance training and learning technology



Leadership development, training and executive coaching

Assessment &
credentialing



Vocational assessment and accreditation



Leadership and management assessment and accreditation

What are we going to cover **today**?

1. The New Roads and Street Works Act 1991 – Why the need ?
2. Introduction to the Streetworks Scheme
3. Update of changes since March 2020 – Assessment Strategy
4. Questions and answers





The New Roads and Street Works Act 1991 – Why the need ?

The New Roads and Street Works Act 1991 (**NRSWA**) requires work involving the installation, renewal, maintenance and inspection of underground apparatus in the highway to be under the control of competent persons. In order to comply with the Act, undertakers must ensure that (except in prescribed cases) the execution of street works is supervised by someone holding a **supervisor's** qualification that covers the work being undertaken.

The **supervisor** need not be present on site at all times but must be able to carry out their role adequately. In addition, a person holding an appropriate **operative** qualification must be present on the site **at all times** when work activities are in progress.



Introduction - Streetworks Excavation and Reinstatement 6167



First it maybe necessary to explain the difference between the initial assessment and reassessment.



The initial assessment is compulsory for those first applying to gain Street Works certificates and involves an assessment of knowledge and the practical application of that knowledge. Hence this covers both theory and practice.



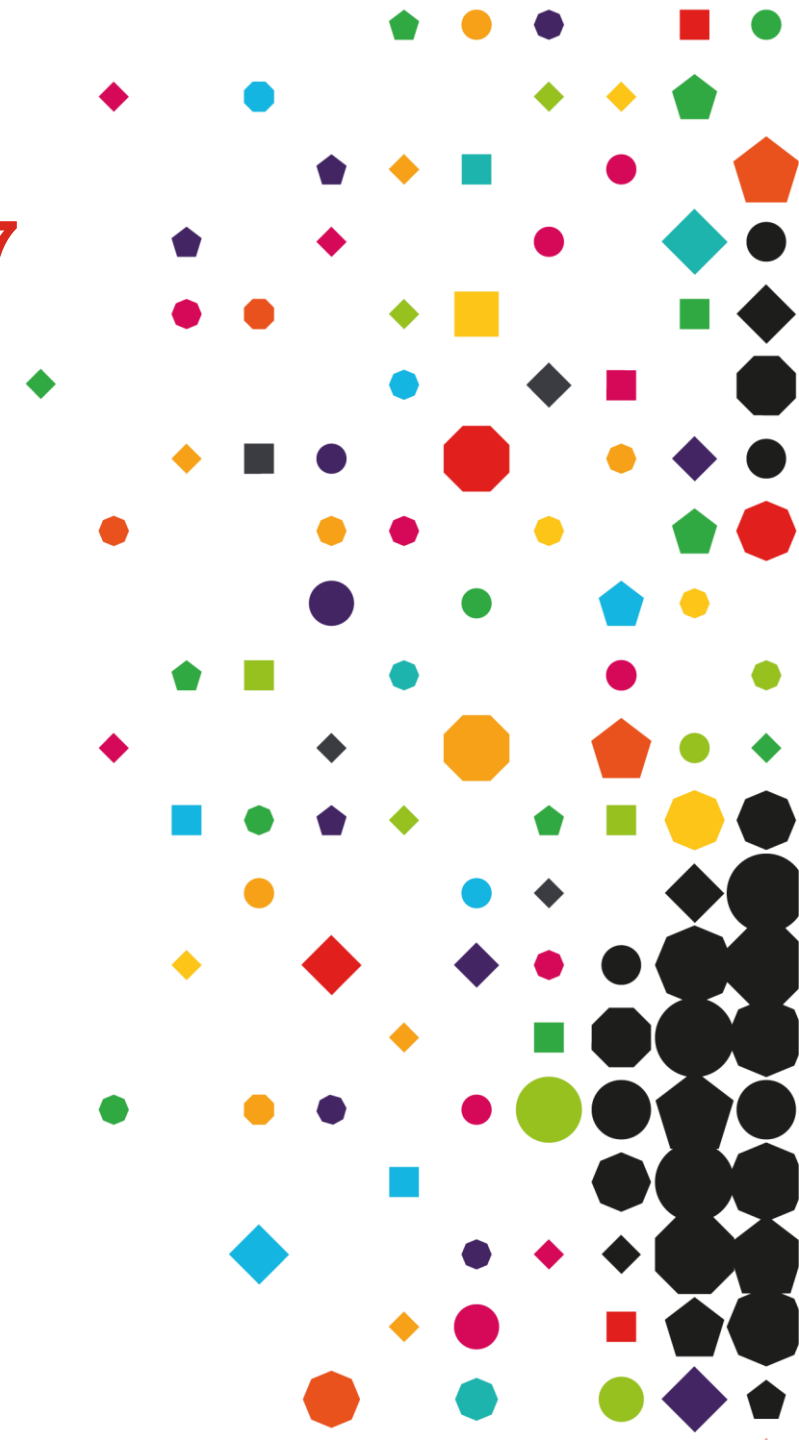
Reassessment is essentially the initial assessment without the practical aspects, i.e. it is a theory only assessment.

Streetworks Excavation and Reinstatement 6167

The Street Works certificates are delivered through assessment centres approved by City & Guilds.

Candidates are required to demonstrate to their assessors, by various assessment methods, that they have the necessary knowledge, understanding and skills to meet the learning outcomes specified in the standards for each certificate they wish to achieve.

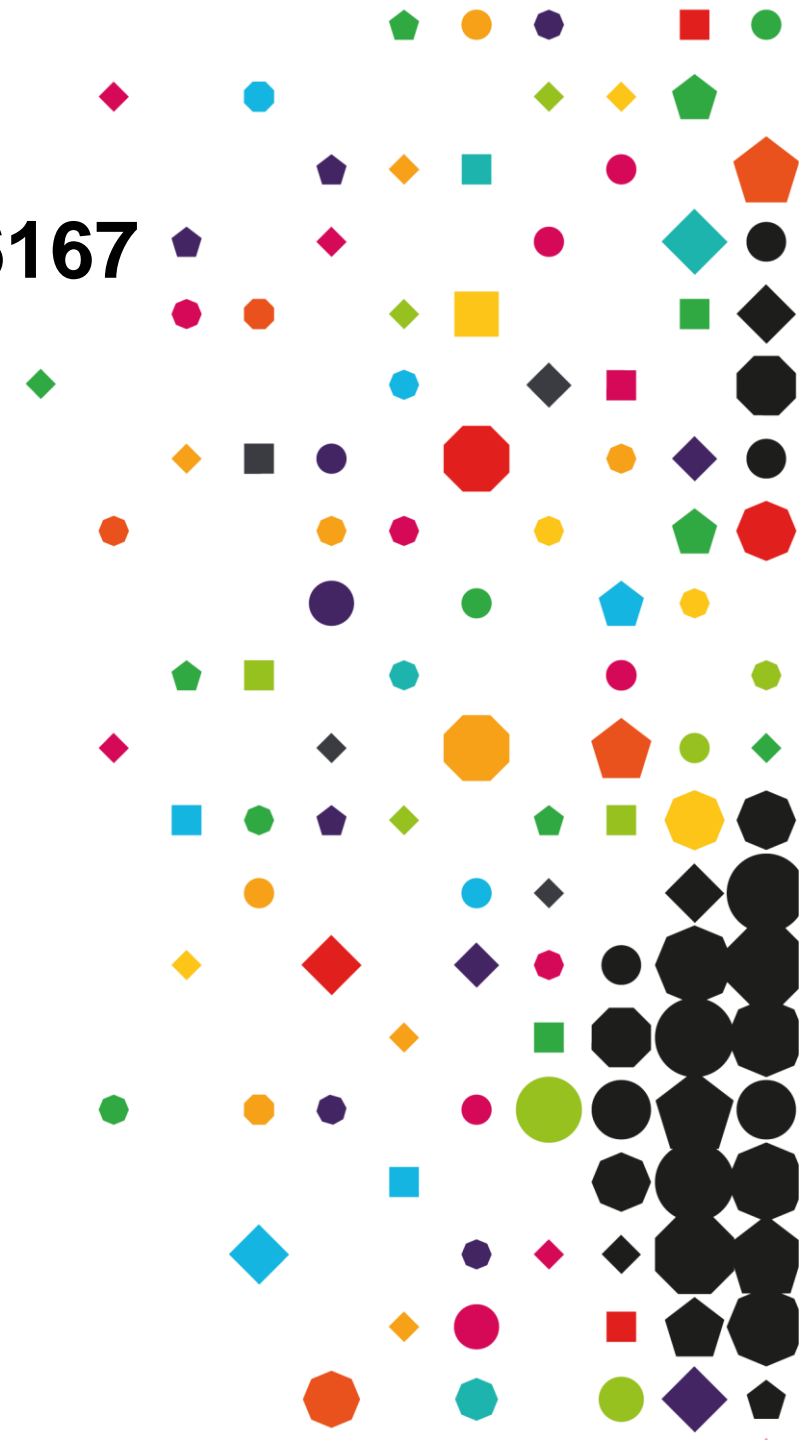
Reassessment is for England and Scotland only and this is by multiple choice examination for each certificate candidates wish to be renewed.



Streetworks Excavation and Reinstatement 6167

For safety reasons qualifications can only be undertaken in the English language. There is no facility for other languages to be used as all codes of practice, assessment materials and supporting documents are only in printed English.

In Wales, this should be in accordance with the Welsh Language Act, where applicable. Training centres in Wales must consider the requirements of the Welsh Language Act in the delivery of their course material.

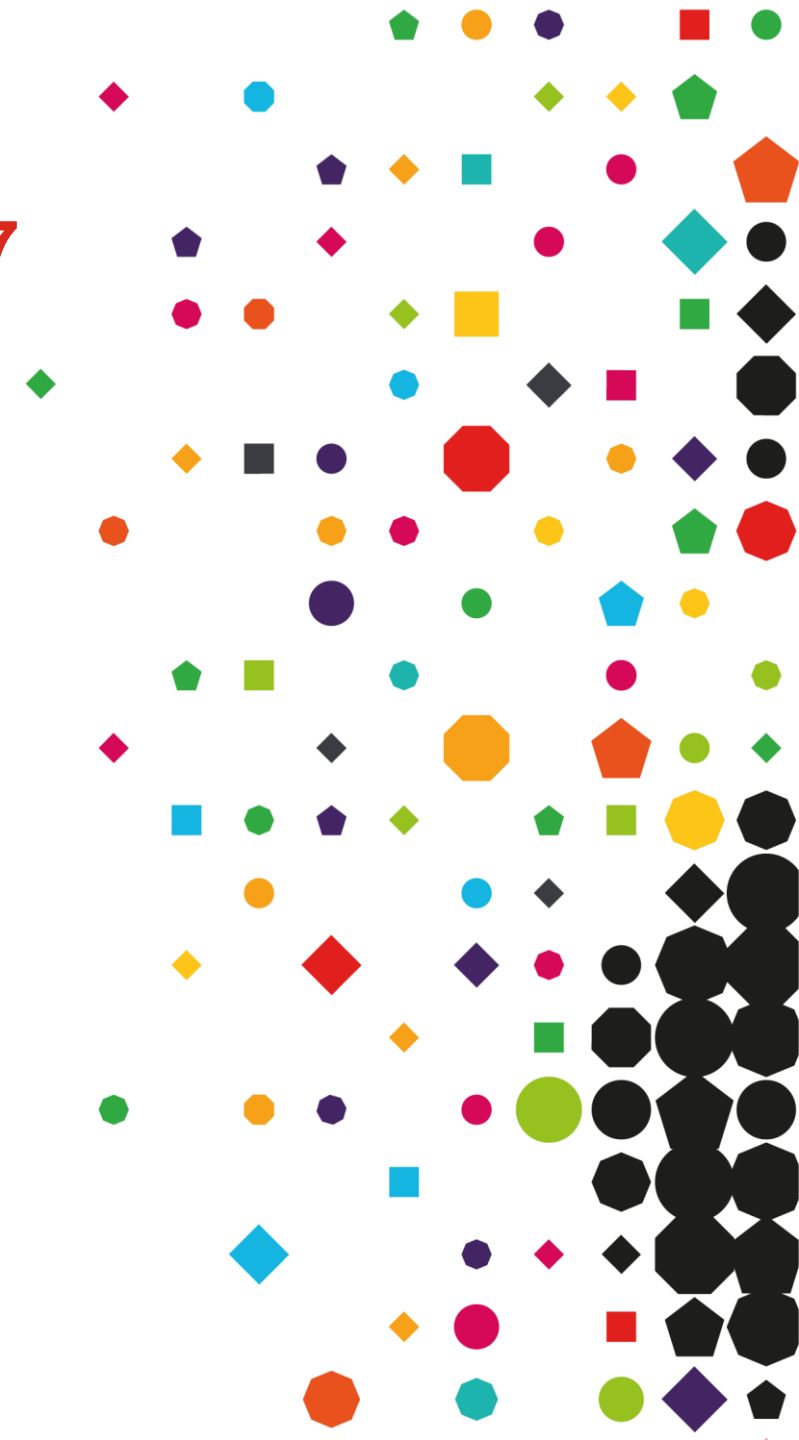


Streetworks Excavation and Reinstatement 6167

Highways Authorities & Utilities Committee **HAUC** (UK), own and are responsible for maintaining all of the assessment documents.

- **Assessment Standards**
- **Examination questions for certificates**
- **Assessment recording documentation**
- **Supporting assessment materials**

These documents are provided to City & Guilds for use by their licensed centres in delivering the assessments





City & Guilds offer two pathways

6167- 01 initial assessment is suitable for operatives and supervisors who work on the highway and require their initial registration on the SWQR or who's current registration has expired beyond **5 years**.

Streetworks Excavation and Reinstatement

HAUC reference	City & Guilds unit number	Unit title	Operative or Supervisor
LA	101	Location and avoidance of underground apparatus	Operative & Supervisor
O1	102	Signing, lighting and guarding	Operative
O2	103	Excavation in the highway	Operative
O3	104	Reinstatement and compaction of backfill materials	Operative
O4	105	Reinstatement of sub-base and base in non-bituminous materials	Operative
O5	106	Reinstatement in cold-lay bituminous materials	Operative
O6	107	Reinstatement in hot-lay bituminous materials	Operative
O7	108	Reinstatement of concrete slabs	Operative
O8	109	Reinstatement of modular surfaces and concrete footways	Operative

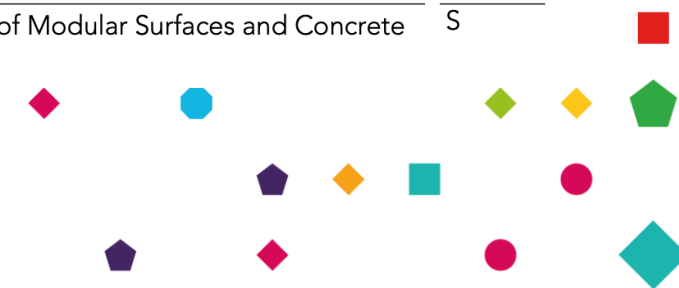
S1	110	Monitoring signing, lighting and guarding	Supervisor
S2	111	Monitoring excavation in the highway	Supervisor
S3	112	Monitoring reinstatement and compaction of backfill materials	Supervisor
S4	113	Monitoring reinstatement of sub-base and base in non-bituminous materials	Supervisor
S5	114	Monitoring reinstatement in bituminous materials	Supervisor
S6	115	Monitoring reinstatement of concrete slabs	Supervisor
S7	116	Monitoring reinstatement of modular surfaces and concrete footways	Supervisor

6167 Pathways

6167-02 is the re-assessment route which is suitable for operatives and supervisors who work on highways in England and Scotland for those who are already registered and need to renew their registration.

To re-register with the Street Works Qualification Register (SWQR) and be issued with a new SWQR card the individual must achieve **one** or more of the reassessed qualifications.

Unit	Title	O/S
517	Reassessed Location and Avoidance of Underground Apparatus	O & S
518	Reassessed Signing, Lighting and Guarding	O
519	Reassessed Excavation in the Highway	O
520	Reassessed Reinstatement and Compaction of Backfill Materials	O
521	Reassessed Reinstatement of Sub-base and base in Non-bituminous Materials	O
522	Reassessed Reinstatement in Cold-lay Bituminous Materials	O
523	Reassessed Reinstatement in Hot-lay Bituminous Materials	O
524	Reassessed Reinstatement of Concrete Slabs	O
525	Reassessed Reinstatement of Modular Surfaces and Concrete Footways	O
526	Reassessed Monitoring Signing, Lighting and Guarding	S
527	Reassessed Monitoring Excavation in the Highway	S
528	Reassessed Monitoring Reinstatement and Compaction of Backfill Materials	S
529	Reassessed Monitoring Reinstatement of Sub-base and base in Non-bituminous Materials	S
530	Reassessed Monitoring Reinstatement in Bituminous materials	S
531	Reassessed Monitoring Reinstatement of Concrete Slabs	S
532	Reassessed Monitoring Reinstatement of Modular Surfaces and Concrete Footways	S



Registration for a SWQR Card

Once a qualification has been claimed City & Guilds will issue the appropriate initial or reassessed certificate(s). The qualifications must then be registered with the Street Works Qualifications Register (SWQR) in order for a card to be issued for the individual to act as a qualified operative or supervisor.



Recent Changes



Scheme number changes 6157 to the 6167 this went live on 2nd March 2020



From the 2nd March 2020 centres were required to register candidates on one pathway to claim the unit certificates; for initial assessments and for reassessments.



From the 1st of June 2021 only online versions of the exams can be taken.



Centres that were approved to deliver the old 6157 pathways have been given automatic approval to deliver 6167.



Updates for the scheme



The main changes were to the knowledge assessment with the move from a 10-question knowledge test to 20 question multiple-choice test. The practical assessments did not change.



The paper-based assessment ceased from 31 May 2021.



HAUC have implemented that all Awarding Organisations must now use an online platform to conduct the knowledge exams.
– City & Guilds use the e-volve platform to operate these.

What is e-volve?



[Home](#) > [Our offer](#) > [Centres](#) > [Working with us](#) > [e-volve](#)

e-volve

e-volve helps your learners and apprentices to sit tests and exams securely and easily giving you peace of mind for the integrity of your testing.

With a unique code for each learner, you can significantly reduce the chance of cheating or mixing up exams because it can display different, relevant questions to different learners. And reporting through e-volve analytics means you can manage and monitor the progress and performance of your centre.

Even though e-volve is web-based, you can download exams to a laptop or PC and use them offline giving you greater flexibility in busy periods or for peace of mind.

e-volve is quick and easy to install so take the next step and use it for your centre.

 [Apply now](#) >

E-VOLVE

→ [Application form](#)

→ [Familiarisation](#)

→ [Software licence](#)

[Working with us](#) >

e-volve analytics

Got an account already? [Sign in](#) to our analytics tool and see what you can learn

e-volve helps learners to sit tests and exams securely and easily giving you peace of mind for the integrity of your testing.

With a unique code for each learner, you can significantly reduce the chance of cheating or mixing up exams because it can display different, relevant questions to different learners.

It allows reporting through e-volve analytics meaning you can manage and monitor the progress and performance of your centre.

e-volve is also quick and easy to install within your Centre.

What is e-volve?



Even though e-volve is web-based, you can download exams to a laptop or PC and use them offline giving you greater flexibility in busy periods.



Further details and technical information can be found on the link below:



<https://www.cityandguilds.com/what-we-offer/centres/working-with-us/e-volve>

Or contact customer services on 01924930800



Assessment strategy - 6167

An updated assessment strategy is due to be released from the Highways Authorities & Utilities Committee (HAUC) in June 2021 and some updates were introduced to the scheme.



THE STREET WORKS ASSESSMENT STRATEGY

(Version 0.1 – November 2019)



THE STREET WORKS ASSESSMENT STRATEGY

(Version 0.2 – June 2021)

Recent Changes - 6167

Some changes have been made to the question bank.

HAUC (UK) were looking to raise the quality. Entirely new questions have been developed for a refreshed question bank; this single bank will service both the **initial** and the **reassessment** knowledge assessments.

Changes that have been made to the unit specifications.

There has been minor content updates (e.g., terminology or reflect changes in best practice) to ensure content is current, but not wholesale changes. Centres are still expected to cover the entire content of the relevant units.



Issues found with the Question banks

HAUC (UK) have also put in place an assessment comment form.

We are hoping all the online questions are now correct however we felt there should be a way of capturing any feedback in a format that we can send direct to **HAUC** to address and ensure that any anomalies can be addresses in agreed timescales.



HAUC (UK) Assessment Comment Form



This can be used to query up to 3 questions and answers and submitted to the Awarding Organisation for review and forwarding to HAUC (UK).

Centre/EQA/AO Name:		Centre Reference: (if applicable)	
Awarding Organisation Name:			
We may need to contact you for further clarification therefore please provide your contact details.			
Name:		Contact Number:	
Test Title, Version, Unit Title, Number etc:			
Question Reference:			
Question content:			
Please provide details of what the issue is and how you think it should be corrected.			

Recent Changes - 6167

Candidates are still allowed to use reference materials during the assessments and these are identified within the handbook against the relevant units & Appendix A - Required Publications.



NJUG Guidelines on the Positioning and Colour Coding of Underground Utilities' Apparatus

Volume 1

NJUG GUIDELINES ON THE POSITIONING AND COLOUR CODING OF UNDERGROUND UTILITIES' APPARATUS

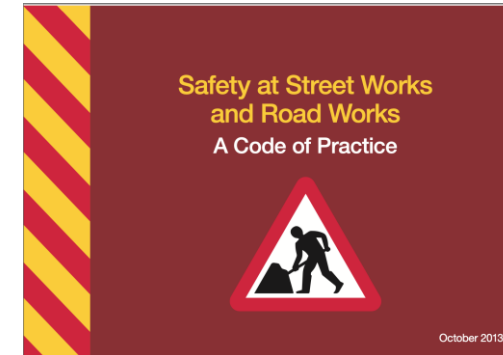
Reassessed Streetworks
Excavation and Reinstatement
(6167-02)

Qualification unit handbook for centres
Reassessed Streetworks Excavation and Reinstatement (6167-02)



Specification for the
Reinstatement of
Openings in Highways

Fourth edition



Assessment Strategy - update

Candidates are required to complete a 20-question multiple-choice test, with a time limit of 45 minutes under invigilated examination conditions. Candidates must answer at least 16 questions correctly (80%) to achieve a Pass.

Same questions are used for both assessment and reassessments.

No maximum candidate to invigilator ratios is set for multiple choice examinations for initial assessment and reassessment, although the examination facility must be suitable and comply with the City & Guilds and the Joint Council for Qualifications (JCQ) policies.



Candidate / Assessor ratios

For Signing, Lighting and Guarding a maximum of 2 candidates per assessor may be assessed on the practical elements at any one time.

For Location and Avoidance of Underground Services, with a minimum of 2 pipe and cable locators, a maximum of 2 candidates per assessor may be assessed on the practical elements at any one time.


For all excavation and reinstatement certificates a maximum of 6 candidates (operatives) per assessor may be assessed on the practical elements at any one time.

Centres can have more candidates on any assessment event providing the assessor/candidate ratios are maintained.

Initial assessment timescales

The timescales to complete assessments may vary between centres and dependent upon the centre resources for equipment, facilities and number of assessors.

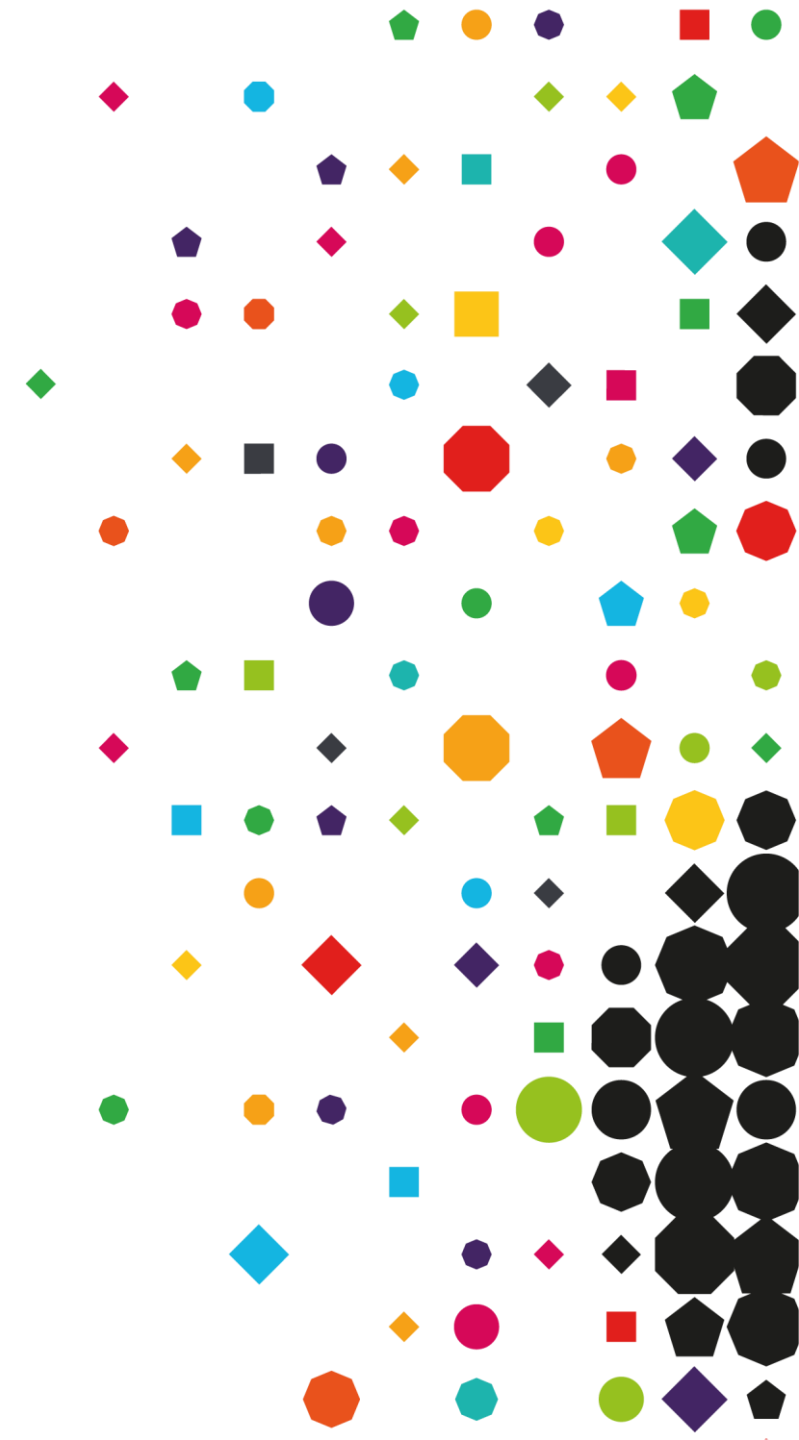
Live site assessments may require more than one assessment visit to ensure that all the certificate criteria are assessed.



The following timescales are taken from actual time studies for assessment using a ratio of 2 or 6 candidates per assessor, for any practical assessments and do not include any time for induction, feedback, centre administration, completing supporting assessment materials or examinations.

Initial assessment timescales

Certificates	Maximum number of candidates per assessor (at any one time)	Minimum practical assessment time
Location and avoidance of underground apparatus.	2	1.5 hours
Signing, lighting and guarding.	2	1 hour
Excavation in the highway	6	2.5 hours
Reinstatement and compaction of backfill materials.	6	1.5 hours
Reinstatement of sub-base and base in non-bituminous materials.	6	1.5 hours
Reinstatement in cold-lay bituminous materials.	6	1.5 hours
Reinstatement in hot-lay bituminous materials.	6	1.5 hours
Reinstatement of concrete slabs.	6	1.5 hours
Reinstatement of modular surfaces and concrete footways.	6	2.5 hours



Time allocated for assessments

Appendix B – Example detailed timetable – Maximum 6 learners per assessor. Certificates LA, 01, 02, 03, 04, 05 and 08

DAY	0830 – 1030	1045 – 1230		1300 – 1430	1445 - 1630	NOTES
Monday	Registration and introductions. Induction into Street Works qualifications (All) Issue documents. Training input, Cable and Pipe location; Service identification (All)	Training input Cable and Pipe location, identification of services, practical demonstration of cable avoidance tool and practice. (All)		Training input: Signing, Lighting and Guarding, use of temporary traffic lights (All)	Training input: Signing, Lighting and Guarding, use of temporary traffic lights (All) Site Risk Assessment and Planning Assessment (All)	Copies of complaints and appeals procedures Copy of Assessment Malpractice Issue question papers/assessment materials
Tuesday	Location and Avoidance of Underground Services Assessments	Location and Avoidance of Underground Services Assessments SLG Assessments		SLG Assessments <i>Depending on candidate's ability this may finish earlier</i>	Training input – Excavation in the Highway, materials identification, carriageway pavement structures (SROH).	Unit assessment timings may vary depending on group size.
Wednesday	Excavation in the Highway Assessments Outside areas	Excavation in the Highway Assessments Outside areas		Prepare areas; Blocks; Slabs and Concrete Outside areas	Training input: Reinstatement of Openings in highways Reinstatement design (assessment)	Assessor marking of papers as time permits
Thursday	Reinstatement of Backfill, sub-base/base and surfacing Assessments	Reinstatement of Backfill, sub-base/base and surfacing Assessments		Block paving, concrete slab and concrete footways Assessments	Block paving, concrete slab and concrete footways Assessments	Time permitting, complete any other practical assessments
Friday	Block paving, concrete slab and concrete footways Assessments	Any outstanding assessments/re-sits Complete Unit papers and marking, etc.		Complete Unit papers and marking, etc.	Assessor/Candidate discussions and feedback	Assessments may be completed earlier depending upon candidates. Assessor to ensure sign off sheets are completed and passed onto the IQA.

Questions answers

Thank you

