



314

Style and finish African type women's hair using a variety of techniques

This unit is about using your imagination and producing a variety of looks on African type hair. You will be encouraged to create a variety of effects when styling and finishing the hair, and will incorporate the use of ornamentation to personalise the looks. You'll understand the science of what happens inside the hair during the styling process, and you will be able to advise clients on the products to use on their hair.

Assignment mark sheet

Unit 314 Style and finish African type women's hair using a variety of techniques

Your assessor will mark you on each of the practical tasks in this unit. This page is used to work out your overall grade for the unit. You must pass **all** parts of the tasks to be able to claim a grade. For the practical task a pass equals 1 point, a merit equals 2 points and a distinction equals 3 points.

What you must know	Tick when complete
Task 1a: produce a style guide	
Task 1b: produce an information sheet	
Or tick if covered by an online test	

What you must do	Grade	Points
Task 2a: rolls, knots or twists		
Task 2b: plaits/braids, woven effects or weaving		
Task 2c: curls, pincurls or finger waving		

Conversion chart

Grade	Points
Pass	1–1.5
Merit	1.6–2.5
Distinction	2.6–3

Total points for graded tasks	
Divided by	÷ 3
= Average grade for tasks	
Overall grade (see conversion chart)	

Candidate name:

Candidate signature: Date:

Assessor signature: Date:

Quality assurance co-ordinator signature
(where applicable): Date:

External Verifier signature
(where applicable): Date:

What does it mean?

Some useful words are explained below

Aftercare

Advice to clients on the correct tools, equipment and products to use to maintain their style at home.



Alpha keratin

Un-stretched hair in its natural state, before it has been styled.

Avant-garde

A style that is ahead of the times, usually worn by the leaders of fashion, before the look becomes fashionable.



Back-brushing

You will use this technique to give height and volume to your hairstyles. Back-brushing is achieved by brushing backwards from the points of the hair to the roots.

Backcombing

Backcombing will give more support to your long hair design than back-brushing. Backcombing is applied at the root area, which gives volume and support to the dressed hair.

Beta keratin

Hair that has been stretched and allowed to cool into a new shape. This occurs after styling.



Classic look

A style that never dates or goes out of fashion, eg a bob.

Commercial look

An everyday look that is suitable for many different people and is easy to wear.

Contra-indication

Factors such as skin conditions, which mean you have to stop or adapt the service.

Fashion look

A style that is currently in fashion and worn for a period of time or until no longer fashionable.

Finger waving

A technique that produces flat 'S'-shaped waves in the hair with no root lift being achieved.



Humidity

Moisture from the atmosphere, which may affect the condition of the hair.

Hydrogen bonds

These bonds will be broken during the styling process to allow the hair to mould into the required shape and style.



Ornamentation

An object used to complement a style. These add interest and detail to the finished look, eg flowers, diamante, headbands, or coloured hair additions.

Traction alopecia

A hair loss condition that is caused by the excessive pulling of the hair at the root.

Revision tip

Excessive tension on the hair follicle by tight plaiting or braiding can result in traction alopecia. The tension will need to be removed and the client may need to be referred to a trichologist.



Be the next ... *Kim Johnson*



Kim Johnson is director of Hype Coiffure in Battersea. Her amazing skills won her the joint Afro Hairdresser of the Year title in 2010. She has worked on lots of fashion shoots including on Britain's Next Top Model. [Read her styling and finishing advice under the blue quote marks!](#)

What you must know

You must be able to:

- 1 Explain the safety considerations that must be taken into account
- 2 Describe the consultation techniques used to identify service objectives
- 3 Describe the factors that need to be considered when styling and dressing hair
- 4 Describe the physical effects of styling on the hair
- 5 Describe the effect humidity has on the hair during setting
- 6 Describe the salon's requirements for client preparation, preparing themselves and the work area
- 7 Describe a range of styles for women
- 8 Describe the correct use and routine maintenance of styling equipment and tools
- 9 Describe the techniques used for styling and dressing
- 10 Explain the importance of using styling and finishing products on the hair
- 11 Explain the importance of controlling and securing long hair effectively
- 12 Explain the importance of considering tension in hair-up styles
- 13 Explain the effects of incorrect use of heat on the hair and scalp
- 14 State the purposes of backcombing and back-brushing when dressing hair
- 15 Describe the methods used to secure added hair and ornamentation during styling
- 16 Describe the aftercare advice that should be provided
- 17 Outline safe and hygienic working practices
- 18 State how to communicate and behave within a salon environment



Image courtesy of iStockphoto.com/featherlabs

Demonstrate the use of products and techniques effectively to the client to enable them to maintain the finished look.



Cornrows make you stand out from the crowd.

African



Excessive tension on the hair can result in traction alopecia.

Backcombing and brushing will add volume to the style.

Gown and protect all clients for the service.

Make sure you secure the hair properly with plaiting.



type hair

You must allow the hair to cool after styling as this allows the hydrogen bonds to harden in their new position and will achieve a longer lasting finish.

To create extra volume, you can use backcombing and back-brushing.



What you must do

Practical observations

This page shows what you need to do during your practical task. You can look at it beforehand, but you're **not** allowed to have it with you while carrying out your practical task. You must achieve **all** the criteria; you can achieve 1 mark, 2 marks or 3 marks for the criteria indicated with *.

Hair length: above the shoulder, below the shoulder

Styling products used (2 different products)

Finishing products (3 different products)

Backcombing or back-brushing

Added hair

Ornamentation

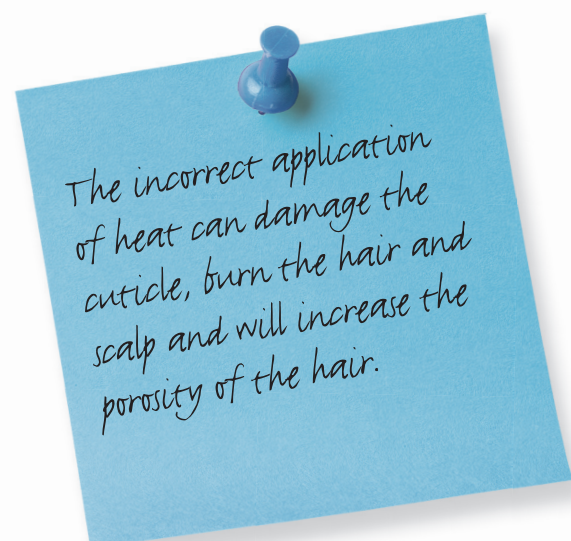
- 1 Prepare yourself, the client and the work area for styling services
- 2 Use suitable consultation techniques to identify service objectives *
- 3 Evaluate the potential of the hair to achieve the desired style by identifying influencing factors *
- 4 Provide clear recommendations to the client based on factors *
- 5 Communicate and behave in a professional manner *

Effects incorporated into a finished style								
Rolls, knots or twists			Plaits/braids, woven effects or weaving			Curls, pincurls or finger waving		
Y/N			Y/N			Y/N		
1			1			1		
1	2	3	1	2	3	1	2	3
1	2	3	1	2	3	1	2	3
1	2	3	1	2	3	1	2	3
1	2	3	1	2	3	1	2	3

Continues on next page



African type hair needs a lot more heat, product and time at the finishing stage for that fabulous result.



-
- 6 Select and use products, tools and equipment to achieve the desired effect
-
- 7 Position yourself and the client appropriately throughout the service
-
- 8 Combine and adapt styling techniques to achieve the desired effects *
-
- 9 Personalise dressing techniques to take account of influencing factors
-
- 10 Secure added hair and effectively blend with the natural hair
-
- 11 Create a finished style that is to the satisfaction of the client
-
- 12 Provide suitable aftercare advice *
-
- 13 Follow safe and hygienic working practices
-

Totals

Grade

Candidate signature and date

Assessor signature and date

Effects incorporated into a finished style								
Rolls, knots or twists			Plaits/braids, woven effects or weaving			Curls, pincurls or finger waving		
1			1			1		
1			1			1		
1	2	3	1	2	3	1	2	3
1			1			1		
			1					
1			1			1		
1	2	3	1	2	3	1	2	3
1			1			1		

**Conversion chart
rolls, knots or
twists/curls, pincurls
or finger waving**

Grade	Marks
Pass	12–14
Merit	15–20
Distinction	21–24

**Conversion chart
plaits/braids, woven
effects or weaving**

Grade	Marks
Pass	13–15
Merit	16–21
Distinction	22–25



More and more salon customers are embracing their natural textures, so natural curls are becoming trendier and opening up new opportunities for styling and finishing.

What you must do

Practical observations descriptors table

This table shows what you need to do to achieve 1, 2 or 3 marks for the criteria indicated with * on pages 128 and 129.

	1 mark	2 marks	3 marks
2 Use suitable consultation techniques to identify service objectives	Basic consultation Example: uses open and closed questions	Good consultation Examples: uses open and closed questions, visual aids, is aware of own body language	Thorough consultation Examples: uses open and closed questions, uses good visual aids, uses body language effectively, repeats instructions clearly to gain confirmation
3 Evaluate the potential of the hair to achieve the desired style by identifying influencing factors	Minimal evaluation Identifies influencing factors Examples: all necessary tests, identifies hair and scalp conditions, hair texture, client requirements, hair length and density, products required	Good evaluation with accuracy most of the time Examples: all necessary tests, identifies hair and scalp conditions, hair texture, client requirements, hair length and density, products required, image and occasion	Comprehensive evaluation with accuracy throughout Examples: all necessary tests, identifies hair and scalp conditions, client requirements, hair length and density, elasticity and porosity, products required, image and occasion, matches the style with appropriate techniques and ornamentation (if used)
4 Provide clear recommendations to the client based on factors	Limited recommendations based on minimal factors Example: if style can be created	Clear recommendations based on most factors Examples: if style can/cannot be created, advice on products to use, maintenance of style	Comprehensive recommendations based on most factors with accuracy Examples: if style can/cannot be created, advice on products to use, maintenance of style, use of added hair (if used), use of ornamentation (if used), adaptations to style to meet requirements/occasion

Continues on next page

	1 mark	2 marks	3 marks
5 Communicate and behave in a professional manner	Satisfactory communication and behaviour Examples: polite, friendly, positive body language, speaks clearly	Good communication and behaviour Examples: polite, friendly, positive body language, speaks clearly, respectful to colleagues and clients, listens and responds to client needs	Excellent communication and behaviour Examples: polite, friendly, positive body language, speaks clearly, respectful to colleagues and clients, listens and responds to client's needs, shows a reassuring and confident manner
8 Combine and adapt styling techniques to achieve the desired effects	Uses limited styling techniques Examples: uses only one styling technique to achieve effect or one brush/comb	Uses a variety of styling techniques Examples: uses both drying and heat-set techniques and more than one brush/comb	Adapts a range of styling techniques to achieve desired effect Examples: uses two or more techniques innovatively and adapts technique to personalise style, uses more than one brush/comb with effect
12 Provide suitable aftercare advice	Basic aftercare advice Example: use of products	Good level of aftercare Examples: use of products and equipment	Excellent level of aftercare advice Examples: use of products and equipment, maintenance of style and information about further services

Image courtesy of iStockphoto.com/Lorado



“

There are so many varieties of African type hair, so there is never just one trend! However, clients are influenced by celebrities, so keep a close eye on the likes of Rihanna and Beyoncé.

Comment form

Unit 314 Style and finish African type women's hair using a variety of techniques

This form can be used to record comments by you, your client, or your assessor.

Revision tip

When the hair is in its natural state it is known as alpha keratin. When it has been stretched, styled, and has been allowed to cool, the hair is known as beta keratin. Moisture in the atmosphere can break the hydrogen bonds and the hair will revert back to alpha keratin.



Image courtesy of iStockphoto.com/SV Photo



Image courtesy of iStockphoto.com/EP Artography